

Vermont Mental Health Performance Indicator Project

Vermont Agency of Human Services, Department of Mental Health
26 Terrace Street, Montpelier, VT 05609

TO: Vermont Mental Health Performance Indicator Project
Advisory Group and Interested Parties

FROM: Emma Harrigan and Sheila Leno

DATE: May 2, 2014

RE: Employment and Earnings of CRT Clients: 2nd Quarter of FY2005-2014

This week's PIP provides quarterly regional employment rates and average earnings of adults with serious mental illness served by Vermont's Community Rehabilitation and Treatment (CRT) programs. Employment rates and average earnings are presented for the second quarter (October-December) for each of ten fiscal years, FY2005 through FY2014.

This report, like previous reports in this series, is based on analysis of data obtained from Vermont Department of Mental Health (DMH) designated agencies and data obtained from the Vermont Department of Labor (DOL). Employment reports from 2001 are available at: <http://mentalhealth.vermont.gov/report/pip/sector#employment>. These reports include all employment reported to DOL by Vermont employers.

As you will see, statewide CRT second quarter employment rates had decreased consistently from 22% in FY2005, to 19% in FY2009, 16% in FY2010, and 15% in FY2011 and FY2012. In FY2013, employment rates increased to 16% and decreases again in FY2014 to 15%. (Page 2)

During the second quarter of FY2014, Washington had the highest employment rate, with 25% of CRT clients employed. The lowest second quarter CRT employment rates were in Northwestern Vermont and Orange (10% each). Compared to the previous year, employment rates for the second quarter of FY2014 decreased in six of ten regions. The largest declines were in Lamoille (17% to 11%) and in Northwest (12% to 10%). Compared to the previous year, employment rates for the second quarter of FY2014 increased the most in the Bennington region from 11% to 12%. (Page 4)

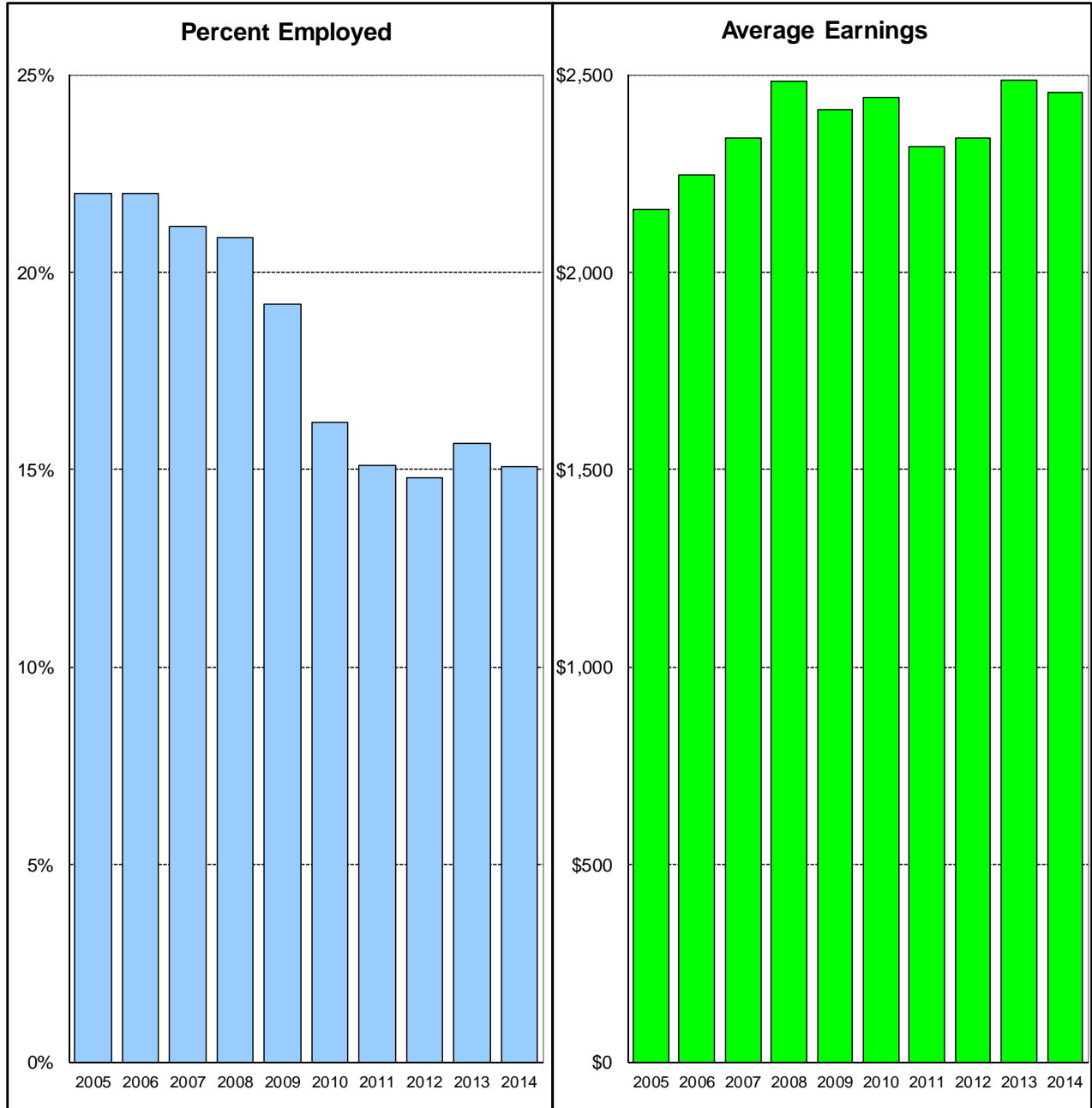
Average second quarter earnings of employed CRT clients decreased slightly from \$2,486 in FY2013 to \$2,456 in FY2014. (Page 2)

Average earnings of employed CRT clients during the second quarter of FY2014, were highest in Rutland, with earnings of \$3,661 per employed CRT client, followed by Lamoille (\$2,956) and Chittenden (\$2,640). The lowest earnings per employed client were in Bennington (\$1,859), Orange (\$1,948), and Northeast (\$1,987). (Page 6)

We look forward to your comments and your suggestions for further analyses of these data. As always, you can reach us by e-mail at pip@state.vt.us.

Statewide CRT Employment Rates and Average Earnings

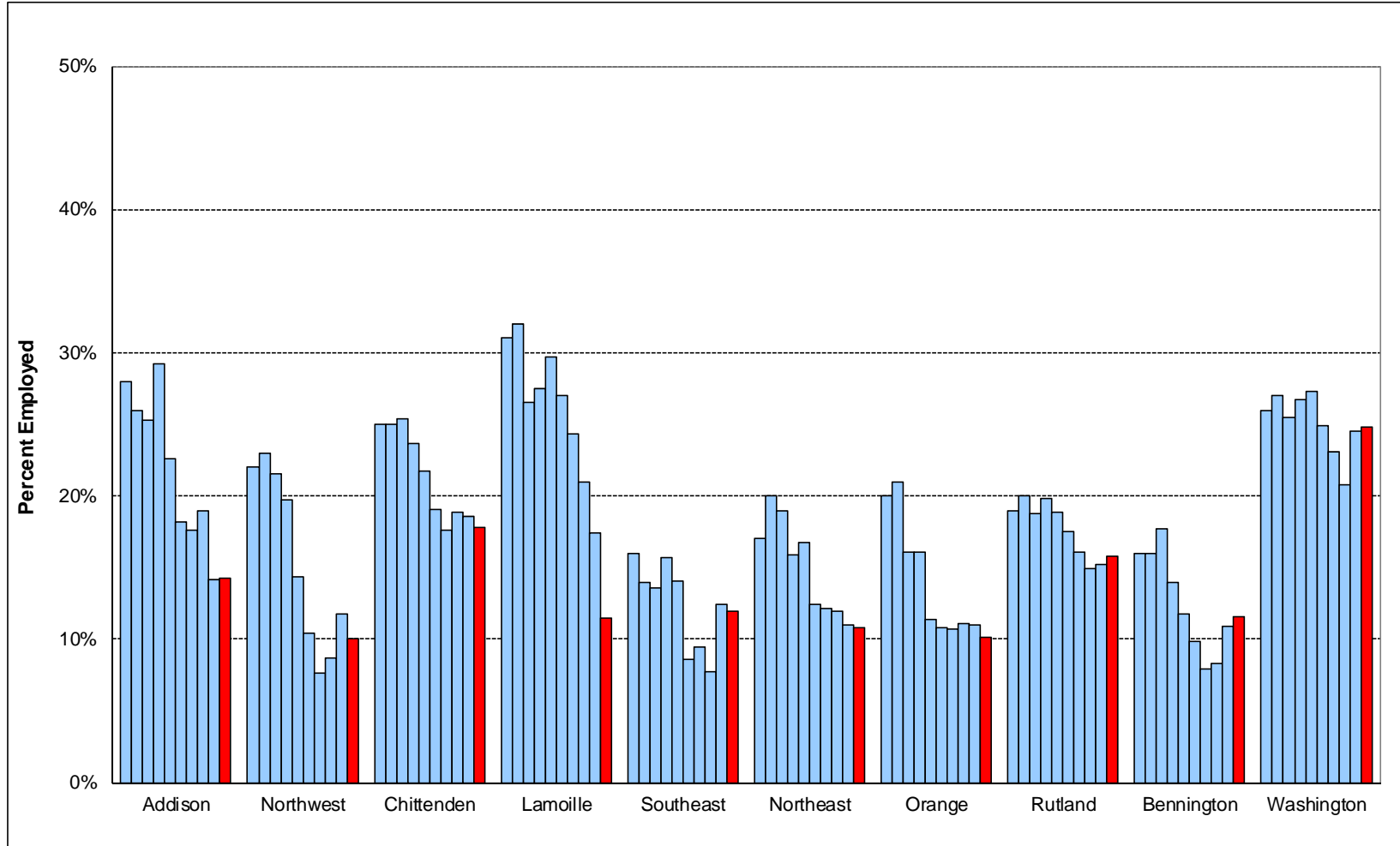
Second Quarter of Each Fiscal Year 2005 - 2014



	Second Quarter of Fiscal Year									
	<u>2005</u>	<u>2006</u>	<u>2007</u>	<u>2008</u>	<u>2009</u>	<u>2010</u>	<u>2011</u>	<u>2012</u>	<u>2013</u>	<u>2014</u>
% Employed	22%	22%	21%	21%	19%	16%	15%	15%	16%	15%
\$ / Employed Client	\$2,160	\$2,245	\$2,338	\$2,482	\$2,411	\$2,443	\$2,318	\$2,340	\$2,486	\$2,456

This report is based on record linkage of the DMH CRT and DOL databases. DMH client data are submitted by Community Programs in conformance with contractual requirements. DOL data are submitted by employers in conformance with state and federal laws. Workers who are excluded from DOL reporting are the self-employed, firm owners not incorporated and the following employee groups: elected officials, employees of nonprofit religious, charitable and educational organizations, unpaid family members, farm workers (with some exceptions), railroad employees, and individuals who work out of state. Analysis includes all employment reported for each quarter for active Community Rehabilitation and Treatment clients aged 18 - 64. Quarterly employment rates are lower than annual employment rates because not all clients who are employed during a year are employed during every quarter of the year.

Percent of CRT Clients Employed Second Quarter of Each Fiscal Year 2005 - 2014



This report is based on record linkage of the DMH CRT and DOL databases. DMH client data are submitted by Community Programs in conformance with contractual requirements. DOL data are submitted by employers in conformance with state and federal laws. Workers who are excluded from DOL reporting are the self-employed, firm owners not incorporated and the following employee groups: elected officials, employees of nonprofit religious, charitable and educational organizations, unpaid family members, farm workers (with some exceptions), railroad employees, and individuals who work out of state. Analysis includes all employment reported for each quarter for active Community Rehabilitation and Treatment clients aged 18 - 64. Quarterly employment rates are lower than annual employment rates because not all clients who are employed during a year are employed during every quarter of the year.

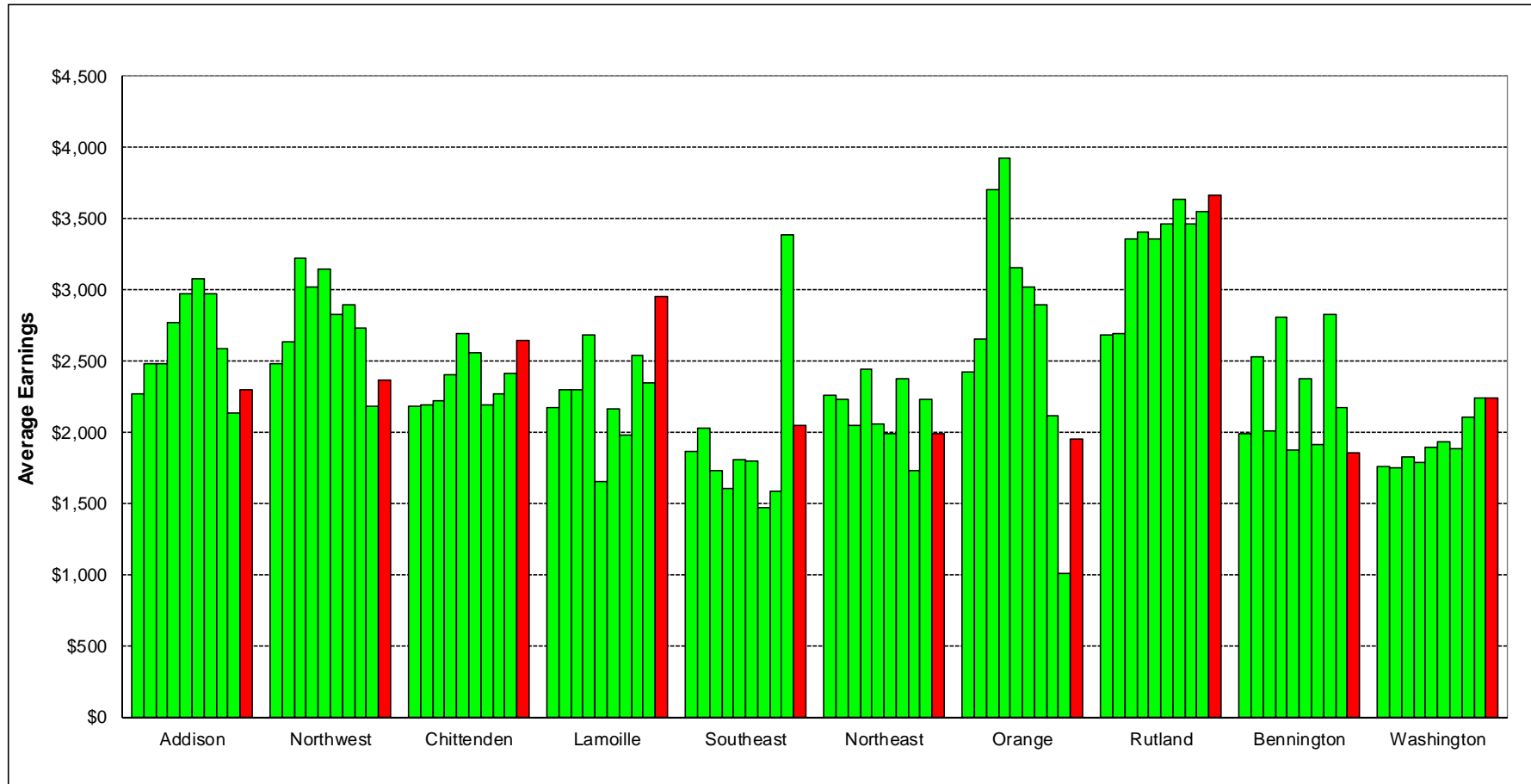
CRT Clients Served (#) and Percent Employed (%)

Second Quarter of Each Fiscal Year 2005 - 2014

Year	Region																		Total			
	Addison		Northwest		Chittenden		Lamoille		Southeast		Northeast		Orange		Rutland		Bennington		Washington		#	%
	#	%	#	%	#	%	#	%	#	%	#	%	#	%	#	%	#	%	#	%	#	%
FY14	147	14.3	190	10.0	561	17.8	96	11.5	344	11.9	204	10.8	129	10.1	203	15.8	130	11.5	286	24.8	2,290	15.1
FY13	148	14.2	195	11.8	554	18.6	109	17.4	347	12.4	210	11.0	136	11.0	223	15.2	129	10.9	298	24.5	2,349	15.7
FY12	153	19.0	196	8.7	563	18.8	119	21.0	336	7.7	235	11.9	135	11.1	235	14.9	133	8.3	328	20.7	2,433	14.8
FY11	165	17.6	196	7.7	574	17.6	111	24.3	339	9.4	271	12.2	131	10.7	230	16.1	139	7.9	334	23.1	2,490	15.1
FY10	165	18.2	201	10.4	584	19.0	111	27.0	337	8.6	298	12.4	139	10.8	229	17.5	152	9.9	349	24.9	2,565	16.2
FY09	164	22.6	195	14.4	576	21.7	111	29.7	342	14.0	311	16.7	149	11.4	233	18.9	162	11.7	341	27.3	2,584	19.2
FY08	161	29.2	203	19.7	557	23.7	120	27.5	350	15.7	328	15.9	162	16.0	237	19.8	172	14.0	374	26.7	2,664	20.9
FY07	154	25.3	200	21.5	567	25.4	132	26.5	354	13.6	359	18.9	162	16.0	251	18.7	169	17.8	377	25.5	2,725	21.1
FY06	148	26.0	199	23.0	567	25.0	128	32.0	349	14.0	367	20.0	155	21.0	242	20.0	159	16.0	386	27.0	2,700	22.0
FY05	148	28.0	205	22.0	563	25.0	131	31.0	353	16.0	361	17.0	158	20.0	255	19.0	164	16.0	397	26.0	2,735	22.0

This report is based on record linkage of the DMH CRT and DOL databases. DMH client data are submitted by Community Programs in conformance with contractual requirements. DOL data are submitted by employers in conformance with state and federal laws. Workers who are excluded from DOL reporting are the self-employed, firm owners not incorporated and the following employee groups: elected officials, employees of nonprofit religious, charitable and educational organizations, unpaid family members, farm workers (with some exceptions), railroad employees, and individuals who work out of state. Analysis includes all employment reported for each quarter for active Community Rehabilitation and Treatment clients aged 18 - 64. Quarterly employment rates are lower than annual employment rates because not all clients who are employed during a year are employed during every quarter of the year.

Average Earnings for Employed CRT Clients Second Quarter of Each Fiscal Year 2005 - 2014



This report is based on record linkage of the DMH CRT and DOL databases. DMH client data are submitted by Community Programs in conformance with contractual requirements. DOL data are submitted by employers in conformance with state and federal laws. Workers who are excluded from DOL reporting are the self-employed, firm owners not incorporated and the following employee groups: elected officials, employees of nonprofit religious, charitable and educational organizations, unpaid family members, farm workers (with some exceptions), railroad employees, and individuals who work out of state. Analysis includes all employment reported for each quarter for active Community Rehabilitation and Treatment clients aged 18 - 64. Quarterly employment rates are lower than annual employment rates because not all clients who are employed during a year are employed during every quarter of the year.

CRT Clients Employed (#) and Average Earnings for Employed Clients (\$)

Second Quarter of Each Fiscal Year 2005 - 2014

Year	Region																		Total			
	Addison		Northwest		Chittenden		Lamoille		Southeast		Northeast		Orange		Rutland		Bennington		Washington		#	\$
	#	\$	#	\$	#	\$	#	\$	#	\$	#	\$	#	\$	#	\$	#	\$				
FY14	21	\$2,301	19	\$2,368	100	\$2,640	11	\$2,956	41	\$2,048	22	\$1,987	13	\$1,948	32	\$3,661	15	\$1,859	71	\$2,244	345	\$2,456
FY13	21	\$2,130	23	\$2,178	103	\$2,416	19	\$2,348	43	\$3,386	23	\$2,230	15	\$1,012	34	\$3,552	14	\$2,173	73	\$2,236	368	\$2,486
FY12	29	\$2,589	17	\$2,730	106	\$2,269	25	\$2,538	26	\$1,587	28	\$1,731	15	\$2,114	35	\$3,458	11	\$2,831	68	\$2,106	360	\$2,340
FY11	29	\$2,968	15	\$2,899	101	\$2,195	27	\$1,982	32	\$1,475	33	\$2,370	14	\$2,894	37	\$3,638	11	\$1,914	77	\$1,885	376	\$2,318
FY10	30	\$3,073	21	\$2,827	111	\$2,561	30	\$2,164	29	\$1,796	37	\$1,990	15	\$3,023	40	\$3,465	15	\$2,375	87	\$1,930	415	\$2,443
FY09	37	\$2,974	28	\$3,144	125	\$2,691	33	\$1,656	48	\$1,809	52	\$2,055	17	\$3,158	44	\$3,356	19	\$1,871	93	\$1,897	496	\$2,411
FY08	47	\$2,768	40	\$3,016	132	\$2,401	33	\$2,680	55	\$1,609	52	\$2,445	26	\$3,929	47	\$3,402	24	\$2,812	100	\$1,785	556	\$2,482
FY07	39	\$2,484	43	\$3,218	144	\$2,219	35	\$2,294	48	\$1,730	68	\$2,052	26	\$3,701	47	\$3,361	30	\$2,007	96	\$1,822	576	\$2,338
FY06	39	\$2,483	46	\$2,632	142	\$2,193	41	\$2,301	50	\$2,024	74	\$2,233	32	\$2,653	48	\$2,697	25	\$2,526	104	\$1,746	601	\$2,245
FY05	41	\$2,273	45	\$2,483	139	\$2,185	41	\$2,168	55	\$1,862	62	\$2,260	31	\$2,419	49	\$2,686	26	\$1,991	104	\$1,758	593	\$2,160

This report is based on record linkage of the DMH CRT and DOL databases. DMH client data are submitted by Community Programs in conformance with contractual requirements. DOL data are submitted by employers in conformance with state and federal laws. Workers who are excluded from DOL reporting are the self-employed, firm owners not incorporated and the following employee groups: elected officials, employees of nonprofit religious, charitable and educational organizations, unpaid family members, farm workers (with some exceptions), railroad employees, and individuals who work out of state. Analysis includes all employment reported for each quarter for active Community Rehabilitation and Treatment clients aged 18 - 64. Quarterly employment rates are lower than annual employment rates because not all clients who are employed during a year are employed during every quarter of the year.

**Quarter 2 FY 2014 Employment
of Community Rehabilitation and Treatment Clients
In Vermont**

Clinic	Total Number Served	Employment		Wages Reported		
		Number Employed	Percent Employed	Total Wages	Wages per Employed Client	Wages per Client Served
Addison - CSAC	147	21	14%	\$48,317	\$2,301	\$329
Northwest - NCSS	190	19	10%	\$44,987	\$2,368	\$237
Chittenden - HC	561	100	18%	\$263,993	\$2,640	\$471
Lamoille - LCMH	96	11	11%	\$32,513	\$2,956	\$339
Southeast - HCRS	344	41	12%	\$83,982	\$2,048	\$244
Northeast - NKHS	204	22	11%	\$43,721	\$1,987	\$214
Orange - CMC	129	13	10%	\$25,324	\$1,948	\$196
Rutland - RMHS	203	32	16%	\$117,136	\$3,661	\$577
Bennington - UCS	130	15	12%	\$27,882	\$1,859	\$214
Washington - WCMH	286	71	25%	\$159,306	\$2,244	\$557
Quarterly Total	2,290	345	15%	\$847,161	\$2,456	\$370

This report is based on record linkage of the Vermont DMH CRT and DOL databases. DMH client data are submitted by Community Programs in conformance with contractual requirements. DOL data are submitted by employers in conformance with state and federal laws. Workers who are excluded from DOL reporting are the self-employed, firm owners not incorporated and the following employee groups: elected officials, employees of nonprofit religious, charitable and educational organizations, unpaid family members, farm workers (with some exceptions), railroad employees, and individuals who work out of state. Analysis includes all employment reported for each quarter for active Community Rehabilitation and Treatment clients aged 18 - 64. Quarterly employment rates are lower than annual employment rates because not all clients who are employed during a year are employed during every quarter of the year.