



# Regional and State Residential Data FY2024 Quarter 4

Vermont Agency of Human Services Residential Turn the Curve Advisory Committee  
280 State St., NOB 2 North, Waterbury, VT 05671-2090, (Questions? Call 802-241-0155)



# Regional and State Residential Data FY2024 Quarter 4

## State

Vermont Agency Of Human Services Residential Turn The Curve Advisory Committee  
280 State St., NOB 2 North, Waterbury, VT 05671-2090, (Questions? Call 802-241-0155)

### Context

#### Regional information about children and youth who are placed in residential assessment or treatment programs.

The information included in this report is focused on children/ youth placed in residential facilities via the Departments for Children and Families (DCF), Mental Health (DMH) and Disabilities, Aging and Independent Living (DAIL). When a child/ youth is placed by one of these departments, the Agency of Education is responsible for the educational costs. This report does not include information about children and youth placed in residential facilities through Local Education Agencies (LEAs) as they have their own residential educational placement process separate from AHS.

The Vermont Agency of Human Services, Residential Turn the Curve Advisory Committee intends to provide regions with information about children and youth from your region who are placed in residential assessment or treatment programs to inform the local system of care discussions and to track trends over time. This information is also shared with the State Interagency Team (SIT).

### Contents

#### 2 STATE DATA

- a. Total Residential Bed Days by Dept. per Fiscal Year
- b. Total Child Count in Residential by Dept. per Fiscal Year
- c. In-state and Out-of-state Residential Count by Dept.

#### 3 STATE DEMOGRAPHICS

- a. Age Groups
- b. Custody
- c. Length of Stay
- d. Prior Residential Treatment.

#### 4 PRESENTING NEEDS

- a. Presenting Needs
- b. Developmental Disabilities
- c. Suicidality

#### 5-40 REGION SPECIFIC DATA

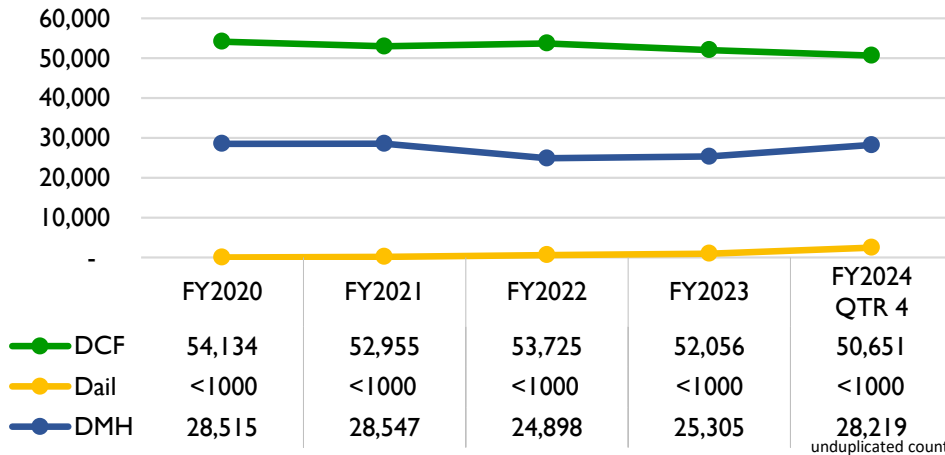
- a. Region's Total Bed Days
- b. Region's Monthly Child Count
- c. Statewide and Region's Percent of In-State and Out-of-State Placements



# STATE DATA

The following charts represent the statewide total bed days and total number of children placed in residential by State fiscal year, broken down by funding department. If a child changed custody status within a fiscal year (i.e. child in DCF custody returned to parent's custody but remained in residential program), the child is counted under both Departments in the Total Child Count chart; the actual bed days are attributed to the respective department in Total Residential Bed Days.

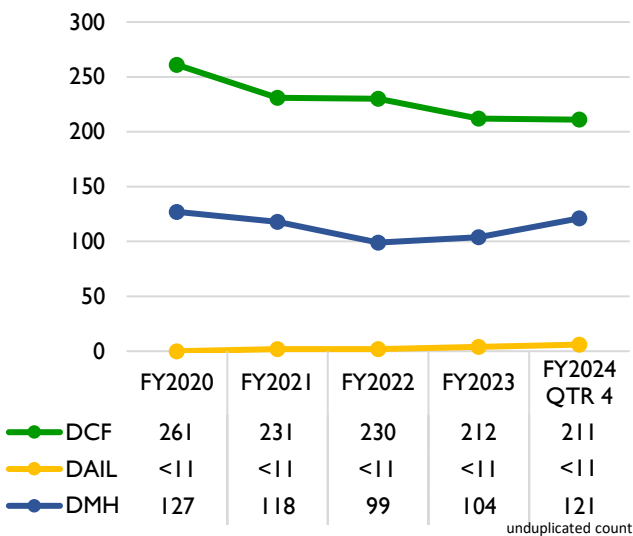
## Total Residential Bed Days by Department per Fiscal Year Through FY24 Q4



## Total Bed Days

Total Bed Days is the total number of days a child/ youth stays overnight in a residential program. For the Total Bed Days chart, children who were placed in more than one program during the fiscal year are represented more than once so that all bed days are calculated.

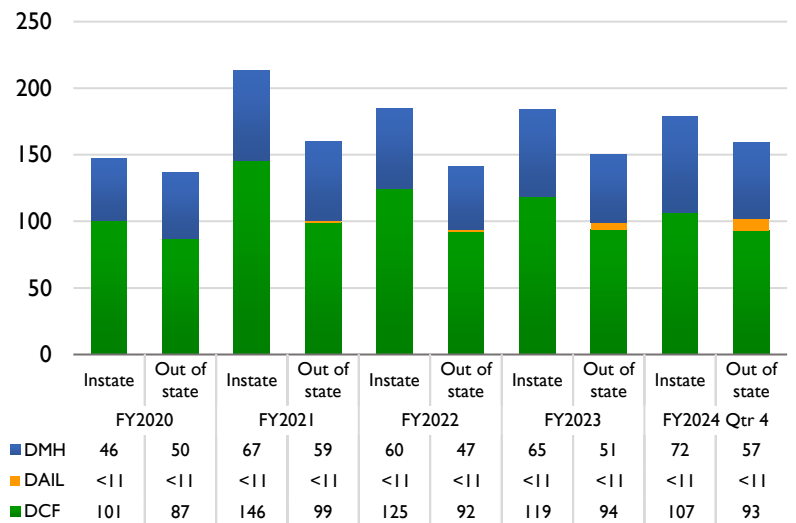
## Total Child Count Residential by Department per Fiscal Year Through FY24 Q4



## Total Child

For the Total Child Count in Residential by State fiscal year, the number of children/youth is unduplicated within the fiscal year, meaning if a child/ youth was placed in more than one residential program during the fiscal year, the child/youth is only counted once.

## Instate and Out-of-State Residential Count Through FY24 Q4



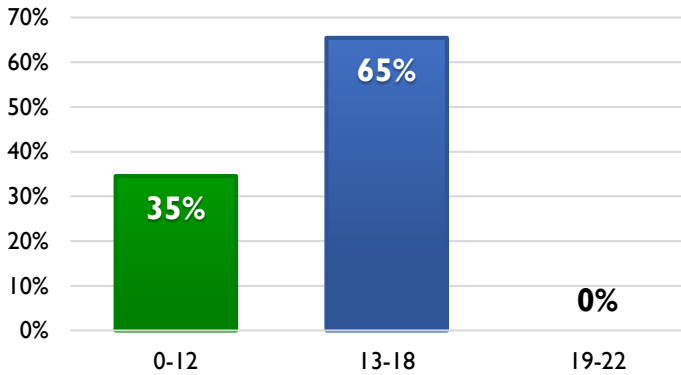
## In-state versus Out-of-state Placement Count by Year

This chart represents the total number of in-state and out-of-state placements by funding department and by fiscal year. Children/youth who were placed in more than one facility or had a custody change in a fiscal year are duplicated in the count.

# STATE DEMOGRAPHICS

The following charts show additional demographics of the children/youth referred to residential assessment or treatment as well as information about their time in residential treatment settings.

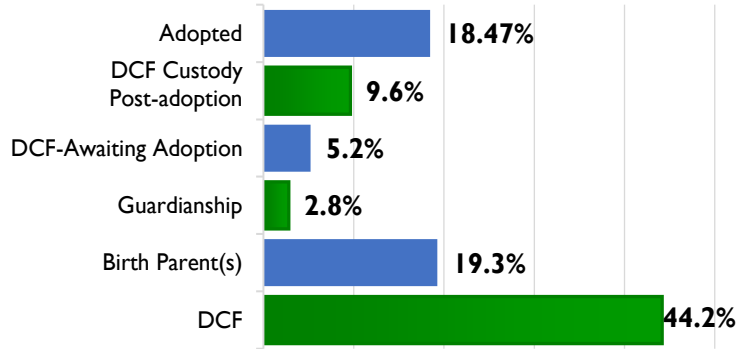
## Percentage by Age Groups



### Age Groups

This shows the unduplicated number of children in the identified age ranges at time of admission into the current residential program. Tracking age ranges can help with looking at needs in the system of care.

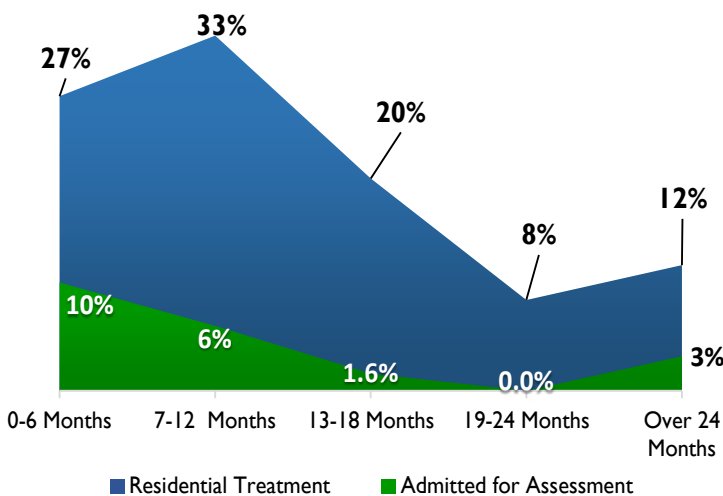
## Custody



### Custody

The State Interagency Team and CRC have been interested in the rates of residential treatment among children/youth who experienced adoption, guardianship, and State's custody following adoption. This chart shows the unduplicated percentages of each custody status.

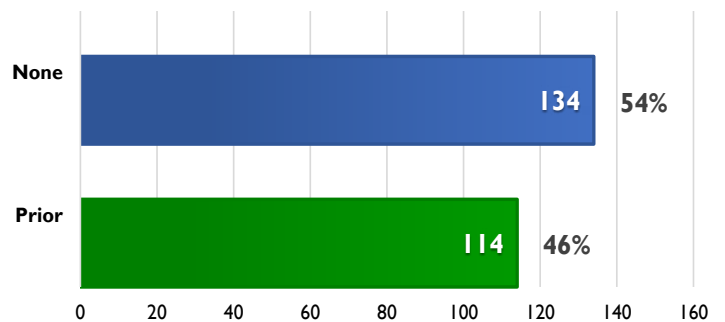
## Length of Stay



### Length of Stay

Length of stay is calculated based on each child/youth's days between admission and discharge (or current duration if the youth is still in the program at the time of analysis). This represents the current episode of residential care and does not show total length of out-of-home stays for youth who may be in more than program over time. Children in assessment programs tend to have shorter lengths of stay.

## Children with Prior Residential Placement



### Prior Placement

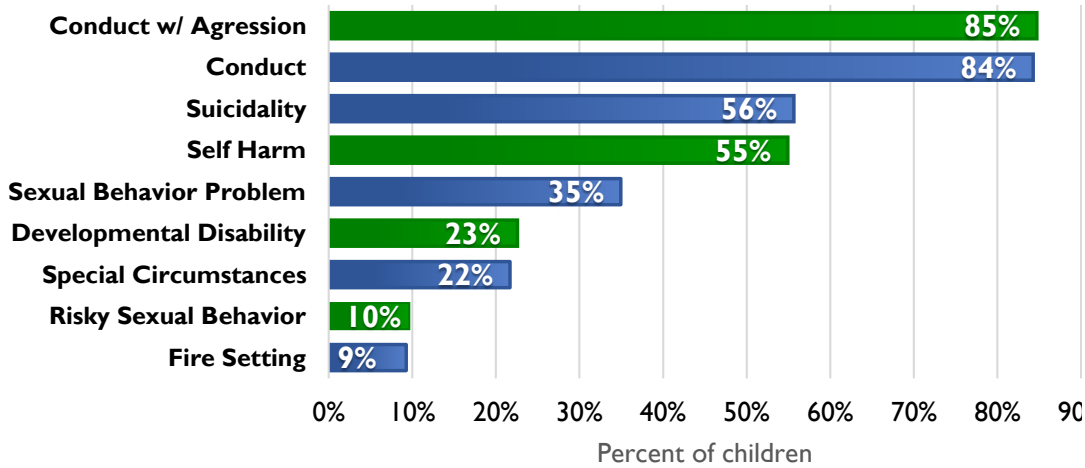
This is the unduplicated number of children/youth who had any prior residential admission (to licensed residential programs including "micro" or staffed homes, not foster care) when referred for current residential care. The reasons for referral to another residential program vary and may indicate transition from assessment to treatment or a transition to a program to better meet the needs of the child. In any case, tracking the number of youth who are in more than one residential program can be informative about the system of care.



# STATE PRESENTING NEEDS

The following charts show additional demographics of the children/youth referred to residential assessment or treatment as well as information about their time in residential treatment settings.

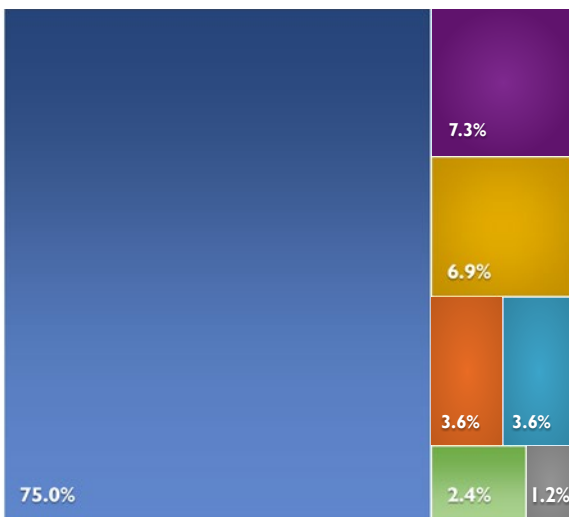
## Presenting Needs Among Children in Residential Programs FY24 Q4



### Presenting Needs

The CRC captures the presenting needs among children referred for residential assessment/treatment to better understand the clinical needs within the system of care. Children may have more than one presenting need and are counted in each respective measure.

## Developmental Disabilities

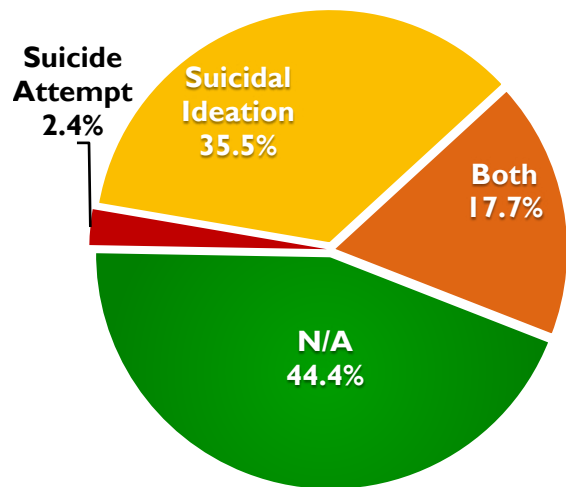


- Assessment needed
- Intellectual Disability
- Both ASD & ID
- Autism Spectrum d/o
- Borderline Intellectual Disability
- Borderline Functional Impairment
- N/A

### Developmental Disabilities

This chart shows the percentage of children with the presenting need of developmental disability broken down into more detail for Intellectual Disability, Autism Spectrum, Borderline Functional Impairment, Borderline Intellectual Disability, DD assessment needed, or no disability.

## Suicidality



- Suicide Attempt
- Suicidal Ideation
- Both
- N/A

### Suicidality

This chart shows the percentage of children with a presenting need of suicidality broken into more detail for suicidal ideation, suicide attempt, both, or none.



# Regional and State Residential Data FY2024 Quarter 4

## Barre

Vermont Agency Of Human Services Residential Turn The Curve Advisory Committee  
280 State St., NOB 2 North, Waterbury, VT 05671-2090, (Questions? Call 802-241-0155)

### Context

#### Regional information about children and youth who are placed in residential assessment or treatment programs.

The information included in this report is focused on children/youth placed in residential facilities via the Departments for Children and Families (DCF), Mental Health (DMH) and Disabilities, Aging and Independent Living (DAIL). When a child/ youth is placed by one of these departments, the Agency of Education is responsible for the educational costs. This report does not include information about children and youth placed in residential facilities through Local Education Agencies (LEAs) as they have their own residential educational placement process separate from AHS.

The Vermont Agency of Human Services, Residential Turn the Curve Advisory Committee intends to provide regions with information about children and youth from your region who are placed in residential assessment or treatment programs to inform the local system of care discussions and to track trends over time. This information is also shared with the State Interagency Team (SIT).

### Contents

#### 2 STATE DATA

- a. Total Residential Bed Days by Dept. per Fiscal Year
- b. Total Child Count in Residential by Dept. per Fiscal Year
- c. In-state and Out-of-state Residential Count by Dept.

#### 3 STATE DEMOGRAPHICS

- a. Age Groups
- b. Custody
- c. Length of Stay
- d. Prior Residential Treatment.

#### 4 PRESENTING NEEDS

- a. Presenting Needs
- b. Developmental Disabilities
- c. Suicidality

#### 5-40 REGION SPECIFIC DATA

- a. Region's Total Bed Days
- b. Region's Monthly Child Count
- c. Statewide and Region's Percent of In-State and Out-of-State Placements

#### Region: Barre

Data for this report includes children/youth from Barre DCF-Family Services District Office and Washington County Mental Health region.

Report Period: FY2024 Qtr.4

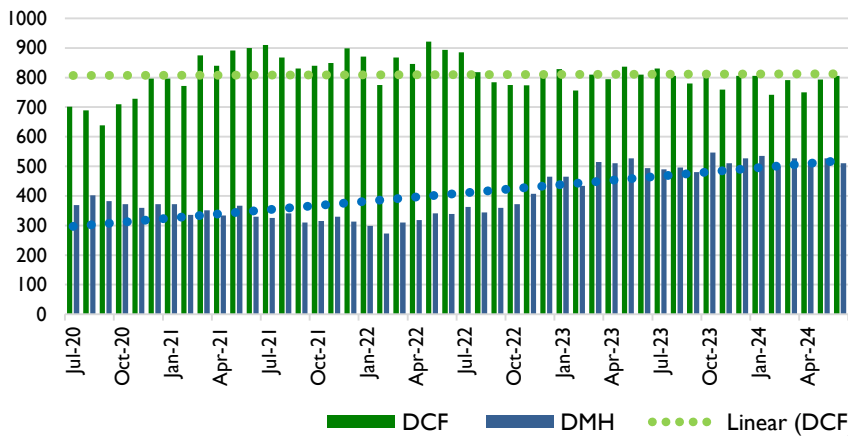


# REGION SPECIFIC DATA

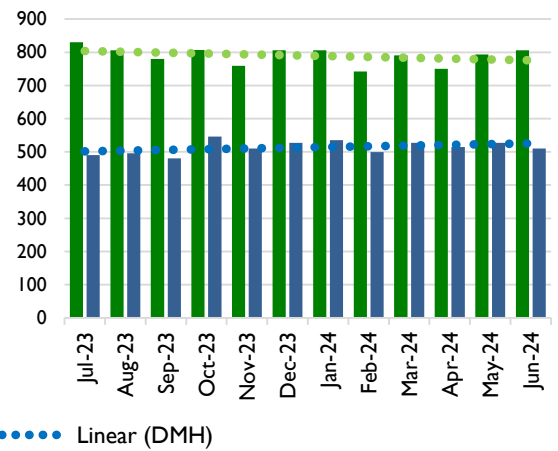
The following two regional charts represent the primary placing department. If a child changed custody status within a fiscal year (i. e. child in DCF custody returned to parent's custody but remained in the residential program), the child is counted under both Departments in the Total Child Count chart; the actual bed days are attributed to the respective department in Total Residential Bed Days.

DAIL places a very small number of children in residential facilities. Data is provided statewide only to eliminate the possibility of identification of individuals/families and potential HIPAA violation. The DA's DS program would have information specific to your region.

**Barre – 4 Year Total Bed Days**



**Barre – Total Bed Days FY24Q4**

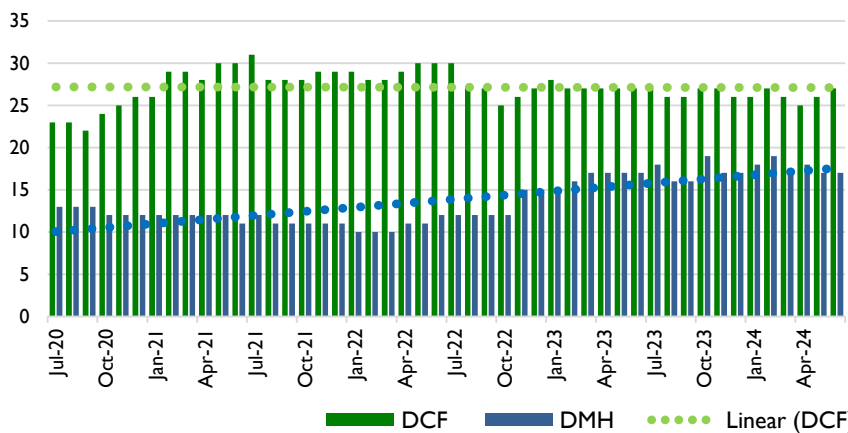


## Total Bed Days

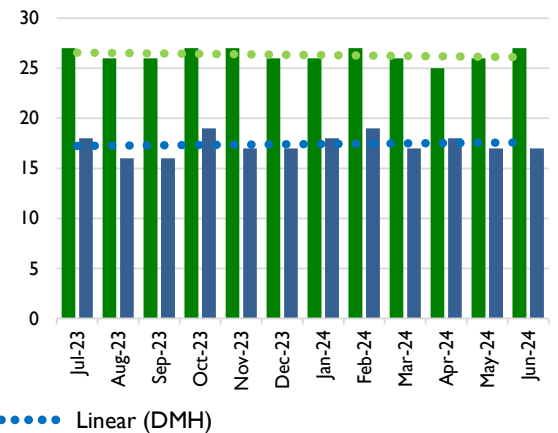
Total Bed Days is the total number of days a child/youth stays overnight in a residential program. For the Total Bed Days chart, children who were placed in more than

one program during the fiscal year are represented more than once so that all bed days are calculated.

**Barre – 4 Year Monthly Count**



**Barre – Monthly Count FY24Q4**



## Count of Child/Youth

For the Monthly Child Count in Residential by State fiscal year, the number of children is unduplicated within the fiscal year, such that if a child was placed in more than one

residential program during the fiscal year, the child is only counted once.

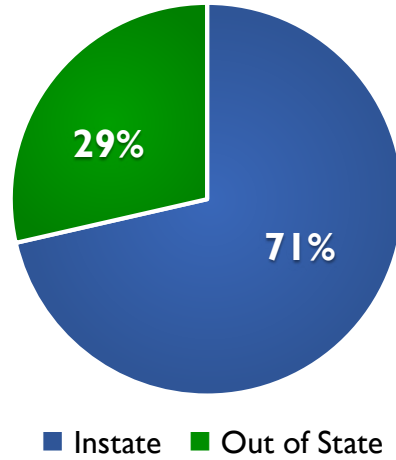


# PERCENT OF IN-STATE VERSUS OUT-OF-STATE PLACEMENTS

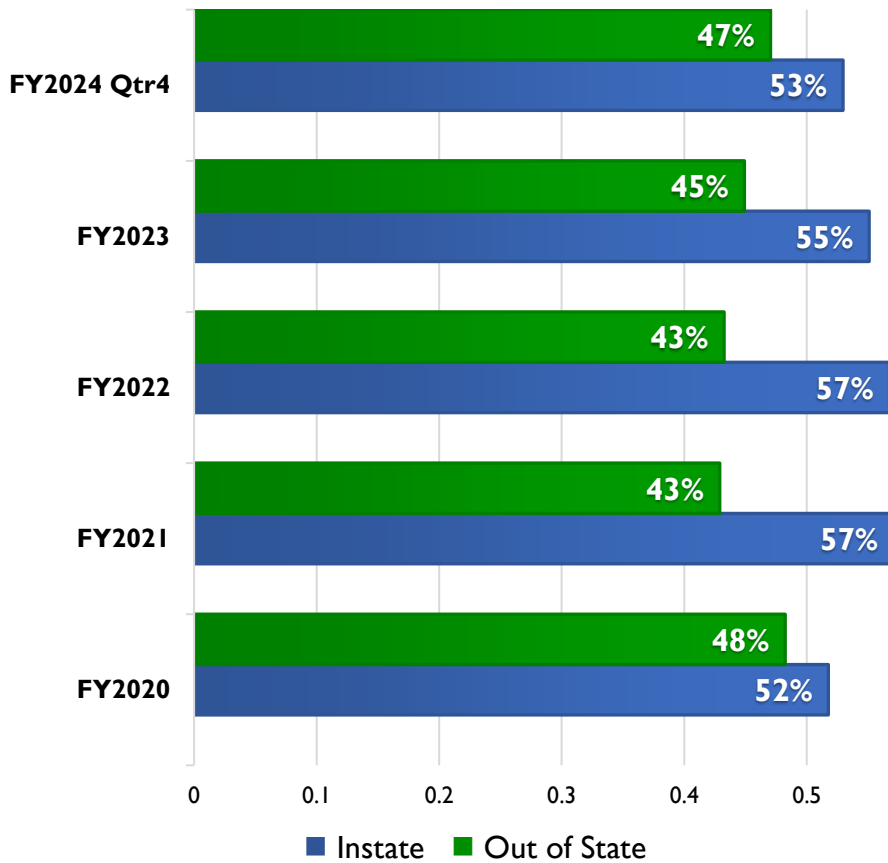
## Barre Residential

The pie chart represents the breakdown of in-state placements compared to out-of-state placements for the fiscal year to date. If a child/youth was placed in more than one program in a fiscal year, they are represented more than once.

### Residential Barre FY24 Q4



## Statewide Residential



### Statewide

This chart represent the breakdown of in-state placements compared to out-of-state placements by fiscal year. If a child/youth was placed in more than one program in a fiscal year, they are represented more than once.





# Regional and State Residential Data FY2024 Quarter 4

## Bennington

Vermont Agency Of Human Services Residential Turn The Curve Advisory Committee  
280 State St., NOB 2 North, Waterbury, VT 05671-2090, (Questions? Call 802-241-0155)

### Context

#### Regional information about children and youth who are placed in residential assessment or treatment programs.

The information included in this report is focused on children/youth placed in residential facilities via the Departments for Children and Families (DCF), Mental Health (DMH) and Disabilities, Aging and Independent Living (DAIL). When a child/ youth is placed by one of these departments, the Agency of Education is responsible for the educational costs. This report does not include information about children and youth placed in residential facilities through Local Education Agencies (LEAs) as they have their own residential educational placement process separate from AHS.

The Vermont Agency of Human Services, Residential Turn the Curve Advisory Committee intends to provide regions with information about children and youth from your region who are placed in residential assessment or treatment programs to inform the local system of care discussions and to track trends over time. This information is also shared with the State Interagency Team (SIT).

### Contents

#### 2 STATE DATA

- a. Total Residential Bed Days by Dept. per Fiscal Year
- b. Total Child Count in Residential by Dept. per Fiscal Year
- c. In-state and Out-of-state Residential Count by Dept.

#### 3 STATE DEMOGRAPHICS

- a. Age Groups
- b. Custody
- c. Length of Stay
- d. Prior Residential Treatment.

#### 4 PRESENTING NEEDS

- a. Presenting Needs
- b. Developmental Disabilities
- c. Suicidality

#### 5-40 REGION SPECIFIC DATA

- a. Region's Total Bed Days
- b. Region's Monthly Child Count
- c. Statewide and Region's Percent of In-State and Out-of-State Placements

#### Region: Bennington

Data for this report includes children/youth from Bennington DCF-Family Services District Office and United Counseling Service region

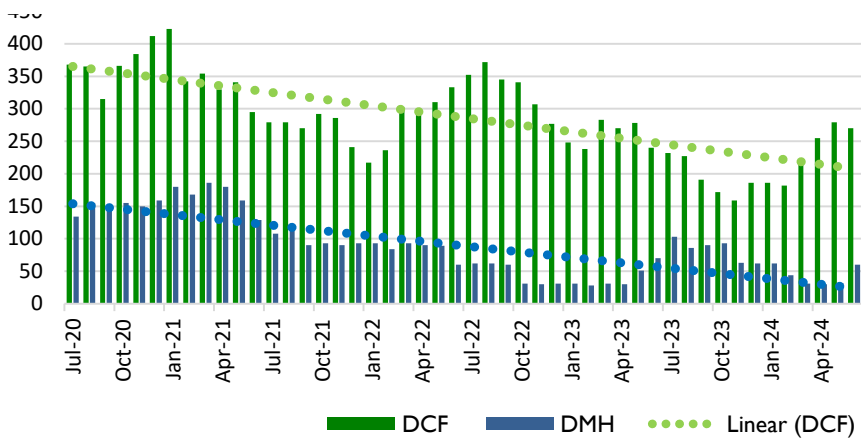
Report Period: FY2024 Qtr.4

# REGION SPECIFIC DATA

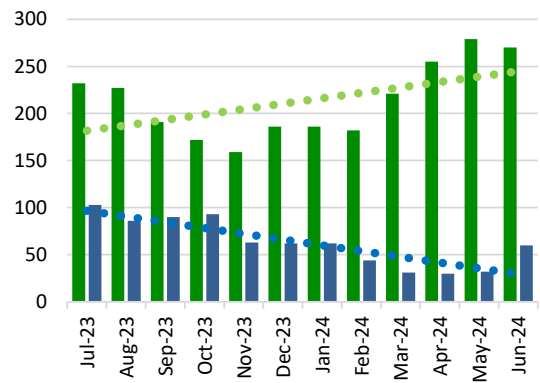
The following two regional charts represent the primary placing department. If a child changed custody status within a fiscal year (i. e. child in DCF custody returned to parent's custody but remained in the residential program), the child is counted under both Departments in the Total Child Count chart; the actual bed days are attributed to the respective department in Total Residential Bed Days.

DAIL places a very small number of children in residential facilities. Data is provided statewide only to eliminate the possibility of identification of individuals/families and potential HIPAA violation. The DA's DS program would have information specific to your region.

**Bennington – 4 Year Total Bed Days**



**Bennington – Total Bed Days FY24Q4**

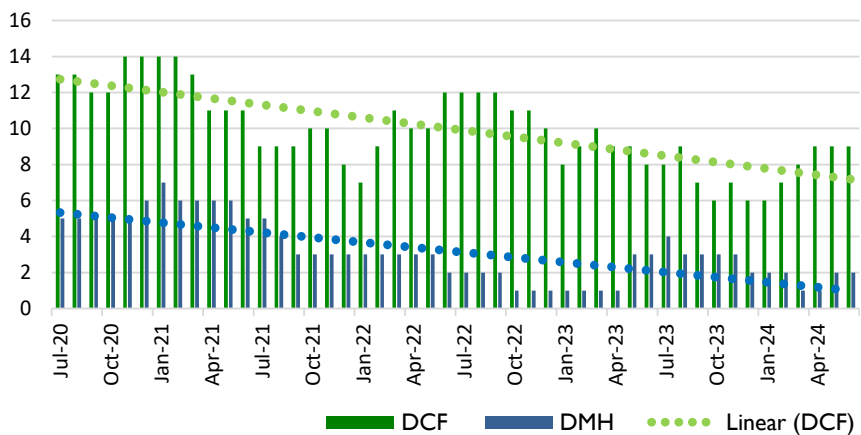


## Total Bed Days

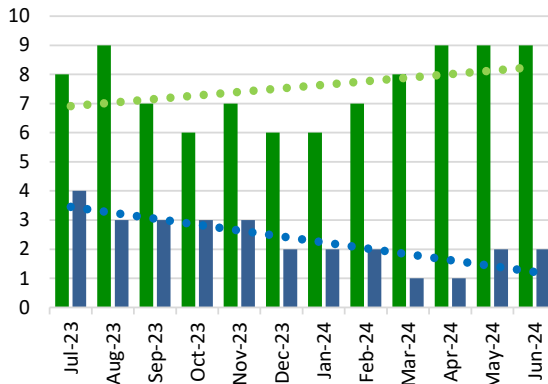
Total Bed Days is the total number of days a child/youth stays overnight in a residential program. For the Total Bed Days chart, children who were placed in more than

one program during the fiscal year are represented more than once so that all bed days are calculated.

**Bennington – 4 Year Monthly Count**



**Bennington – Monthly Count FY24Q4**



## Count of Child/Youth

For the Monthly Child Count in Residential by State fiscal year, the number of children is unduplicated within the fiscal year, such that if a child was placed in more than one

residential program during the fiscal year, the child is only counted once.

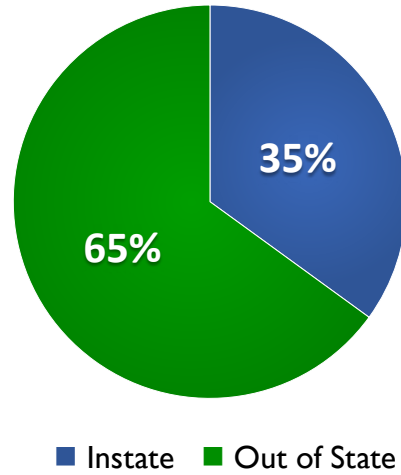


# PERCENT OF IN-STATE VERSUS OUT-OF-STATE PLACEMENTS

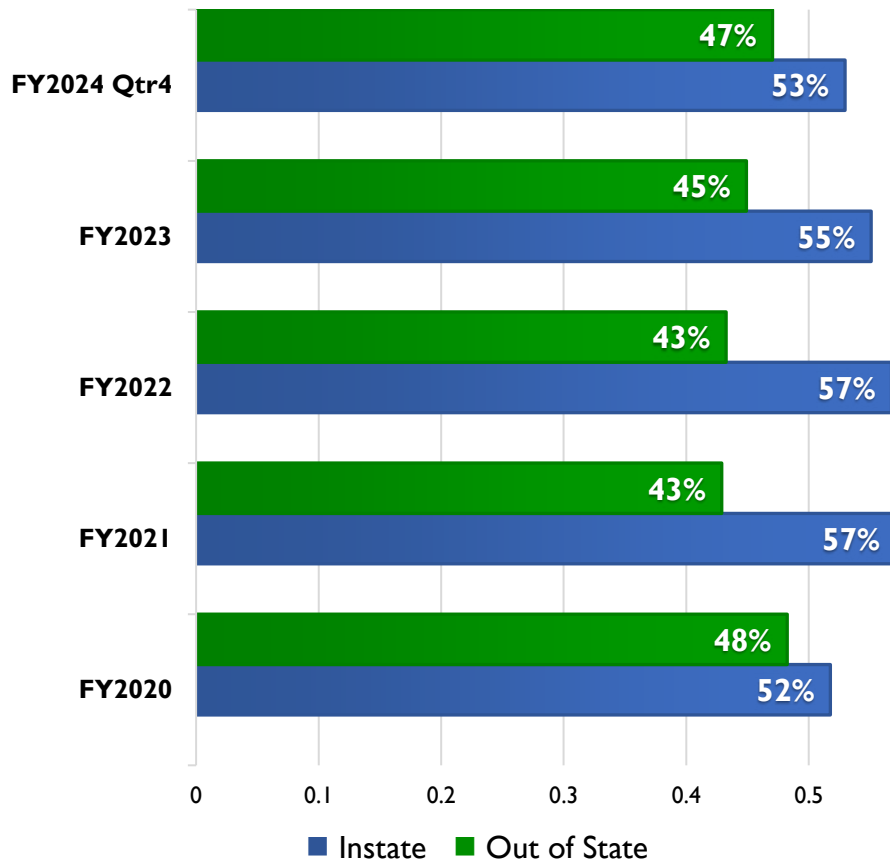
## Bennington Residential

The pie chart represents the breakdown of in-state placements compared to out-of-state placements for the fiscal year to date. If a child/youth was placed in more than one program in a fiscal year, they are represented more than once.

**Residential  
Bennington FY24 Q4**



## Statewide Residential



## Statewide

This chart represent the breakdown of in-state placements compared to out-of-state placements by fiscal year. If a child/youth was placed in more than one program in a fiscal year, they are represented more than once.



# Regional and State Residential Data FY2024 Quarter 4

## Brattleboro

Vermont Agency Of Human Services Residential Turn The Curve Advisory Committee  
280 State St., NOB 2 North, Waterbury, VT 05671-2090, (Questions? Call 802-241-0155)

### Context

#### **Regional information about children and youth who are placed in residential assessment or treatment programs.**

The information included in this report is focused on children/youth placed in residential facilities via the Departments for Children and Families (DCF), Mental Health (DMH) and Disabilities, Aging and Independent Living (DAIL). When a child/ youth is placed by one of these departments, the Agency of Education is responsible for the educational costs. This report does not include information about children and youth placed in residential facilities through Local Education Agencies (LEAs) as they have their own residential educational placement process separate from AHS.

The Vermont Agency of Human Services, Residential Turn the Curve Advisory Committee intends to provide regions with information about children and youth from your region who are placed in residential assessment or treatment programs to inform the local system of care discussions and to track trends over time. This information is also shared with the State Interagency Team (SIT).

### Contents

#### 2 STATE DATA

- a. Total Residential Bed Days by Dept. per Fiscal Year
- b. Total Child Count in Residential by Dept. per Fiscal Year
- c. In-state and Out-of-state Residential Count by Dept.

#### 3 STATE DEMOGRAPHICS

- a. Age Groups
- b. Custody
- c. Length of Stay
- d. Prior Residential Treatment.

#### 4 PRESENTING NEEDS

- a. Presenting Needs
- b. Developmental Disabilities
- c. Suicidality

#### 5-40 REGION SPECIFIC DATA

- a. Region's Total Bed Days
- b. Region's Monthly Child Count
- c. Statewide and Region's Percent of In-State and Out-of-State Placements

**Region:** Brattleboro

Data for this report includes children/youth from Brattleboro DCF-Family Services District Office and Health Care & Rehabilitation Services, Brattleboro region.

**Report Period:** FY2024 Qtr.4

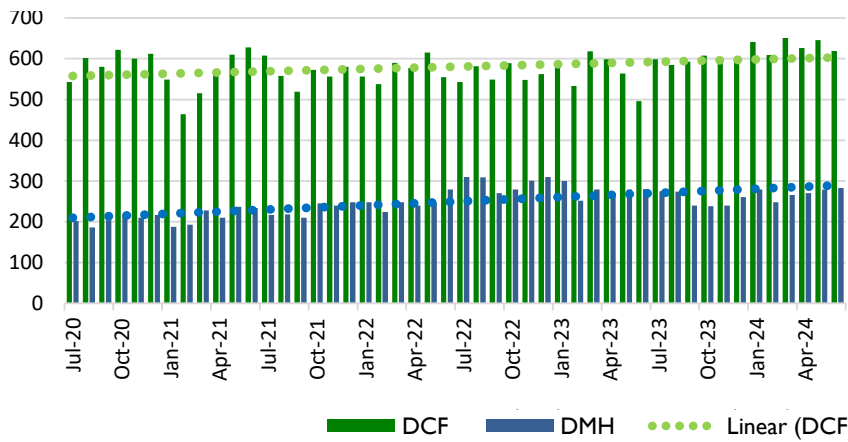


# REGION SPECIFIC DATA

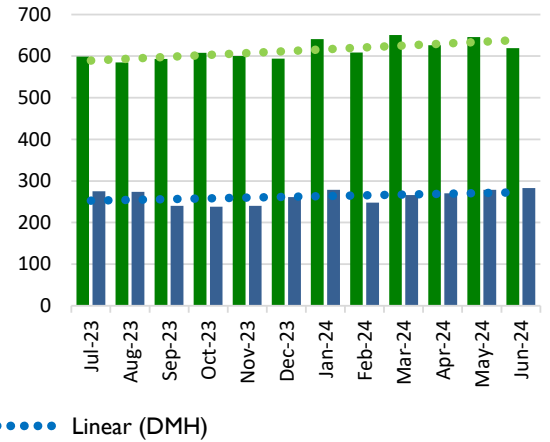
The following two regional charts represent the primary placing department. If a child changed custody status within a fiscal year (i. e. child in DCF custody returned to parent's custody but remained in the residential program), the child is counted under both Departments in the Total Child Count chart; the actual bed days are attributed to the respective department in Total Residential Bed Days.

DAIL places a very small number of children in residential facilities. Data is provided statewide only to eliminate the possibility of identification of individuals/families and potential HIPAA violation. The DA's DS program would have information specific to your region.

**Brattleboro – 4 Year Total Bed Days**



**Brattleboro – Total Bed Days FY24Q4**

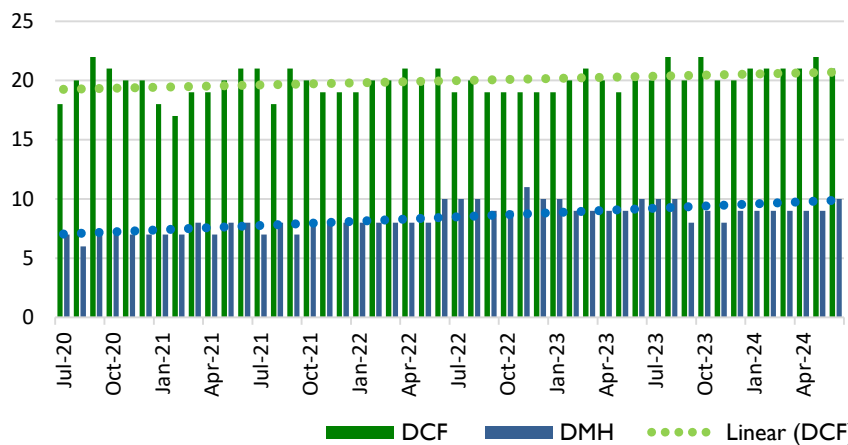


## Total Bed Days

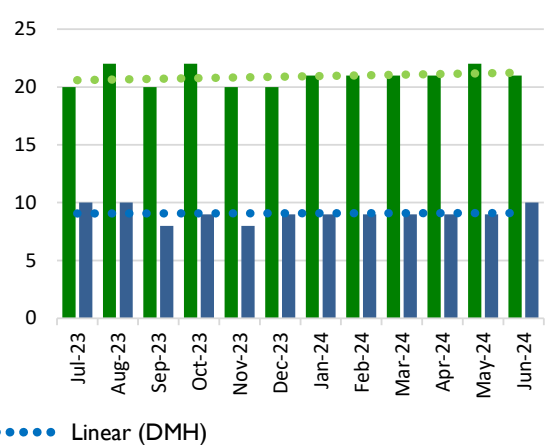
Total Bed Days is the total number of days a child/youth stays overnight in a residential program. For the Total Bed Days chart, children who were placed in more than

one program during the fiscal year are represented more than once so that all bed days are calculated.

**Brattleboro – 4 Year Monthly Count**



**Brattleboro – Monthly Count FY24Q4**



## Count of Child/Youth

For the Monthly Child Count in Residential by State fiscal year, the number of children is unduplicated within the fiscal year, such that if a child was placed in more than one

residential program during the fiscal year, the child is only counted once.

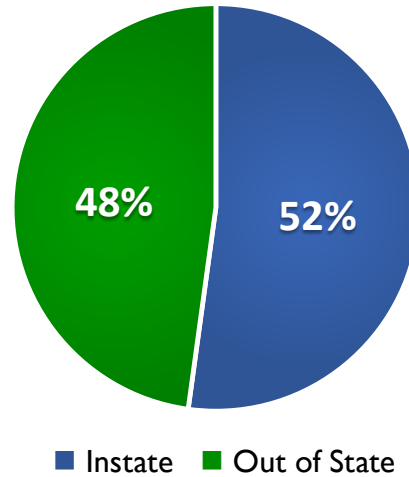


# PERCENT OF IN-STATE VERSUS OUT-OF-STATE PLACEMENTS

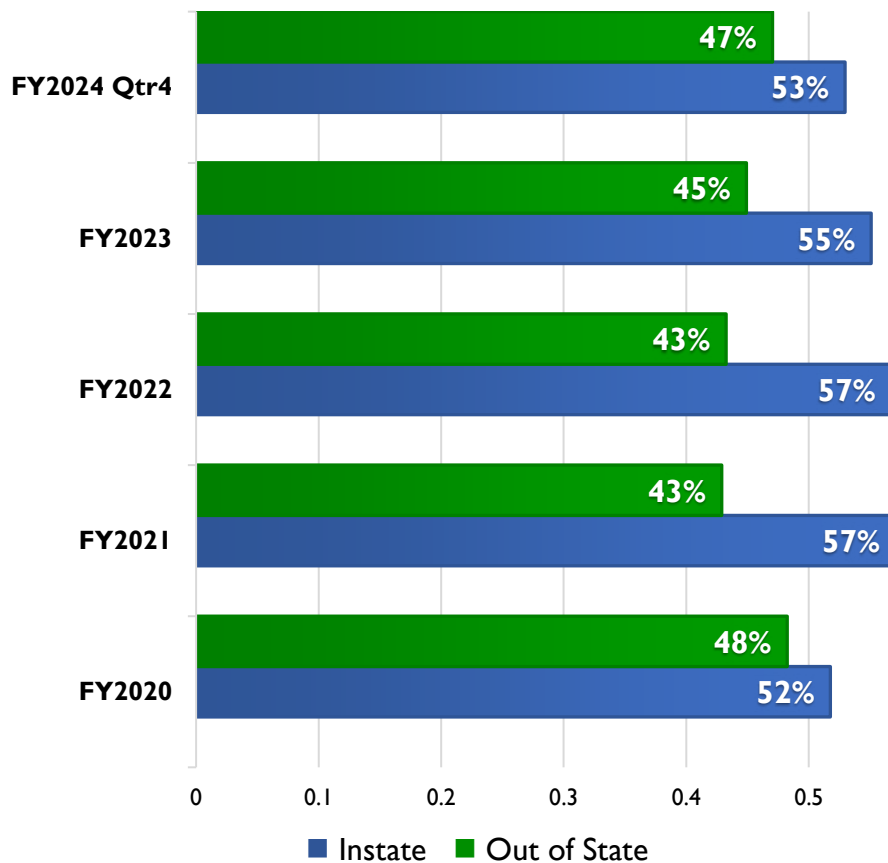
## Brattleboro Residential

The pie chart represents the breakdown of in-state placements compared to out-of-state placements for the fiscal year to date. If a child/youth was placed in more than one program in a fiscal year, they are represented more than once.

**Residential  
Brattleboro FY24 Q4**



## Statewide Residential



## Statewide

This chart represent the breakdown of in-state placements compared to out-of-state placements by fiscal year. If a child/youth was placed in more than one program in a fiscal year, they are represented more than once.



# Regional and State Residential Data FY2024 Quarter 4

## Burlington

Vermont Agency Of Human Services Residential Turn The Curve Advisory Committee  
280 State St., NOB 2 North, Waterbury, VT 05671-2090, (Questions? Call 802-241-0155)

### Context

#### Regional information about children and youth who are placed in residential assessment or treatment programs.

The information included in this report is focused on children/youth placed in residential facilities via the Departments for Children and Families (DCF), Mental Health (DMH) and Disabilities, Aging and Independent Living (DAIL). When a child/ youth is placed by one of these departments, the Agency of Education is responsible for the educational costs. This report does not include information about children and youth placed in residential facilities through Local Education Agencies (LEAs) as they have their own residential educational placement process separate from AHS.

The Vermont Agency of Human Services, Residential Turn the Curve Advisory Committee intends to provide regions with information about children and youth from your region who are placed in residential assessment or treatment programs to inform the local system of care discussions and to track trends over time. This information is also shared with the State Interagency Team (SIT).

### Contents

#### 2 STATE DATA

- a. Total Residential Bed Days by Dept. per Fiscal Year
- b. Total Child Count in Residential by Dept. per Fiscal Year
- c. In-state and Out-of-state Residential Count by Dept.

#### 3 STATE DEMOGRAPHICS

- a. Age Groups
- b. Custody
- c. Length of Stay
- d. Prior Residential Treatment.

#### 4 PRESENTING NEEDS

- a. Presenting Needs
- b. Developmental Disabilities
- c. Suicidality

#### 5-40 REGION SPECIFIC DATA

- a. Region's Total Bed Days
- b. Region's Monthly Child Count
- c. Statewide and Region's Percent of In-State and Out-of-State Placements

#### Region: Burlington

Data for this report includes children/youth from Burlington DCF-Family Services District Office and Howard Center, Burlington region.

Report Period: FY2024 Qtr.4

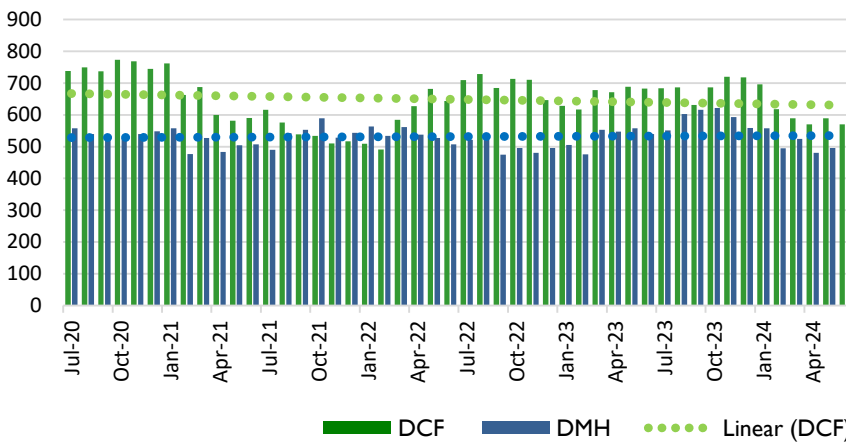


# REGION SPECIFIC DATA

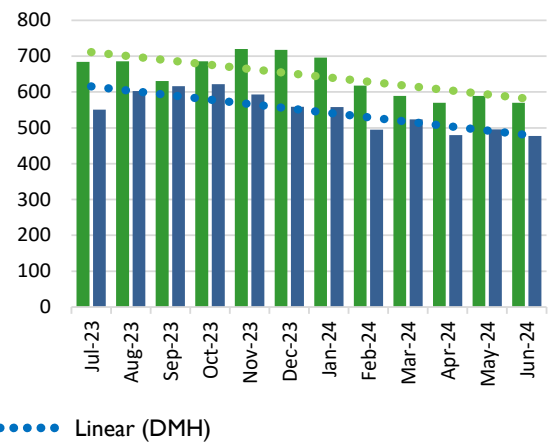
The following two regional charts represent the primary placing department. If a child changed custody status within a fiscal year (i. e. child in DCF custody returned to parent's custody but remained in the residential program), the child is counted under both Departments in the Total Child Count chart; the actual bed days are attributed to the respective department in Total Residential Bed Days.

DAIL places a very small number of children in residential facilities. Data is provided statewide only to eliminate the possibility of identification of individuals/families and potential HIPAA violation. The DA's DS program would have information specific to your region.

### Burlington – 4 Year Total Bed Days



### Burlington – Total Bed Days FY24Q4

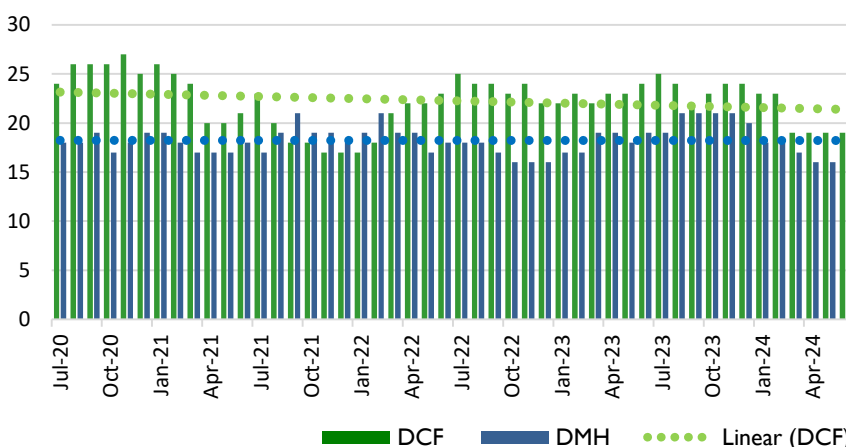


## Total Bed Days

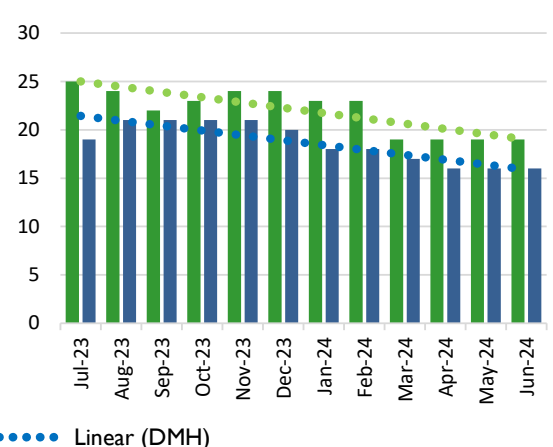
Total Bed Days is the total number of days a child/youth stays overnight in a residential program. For the Total Bed Days chart, children who were placed in more than

one program during the fiscal year are represented more than once so that all bed days are calculated.

### Burlington – 4 Year Monthly Count



### Burlington – Monthly Count FY24Q4



## Count of Child/Youth

For the Monthly Child Count in Residential by State fiscal year, the number of children is unduplicated within the fiscal year, such that if a child was placed in more than one

residential program during the fiscal year, the child is only counted once.



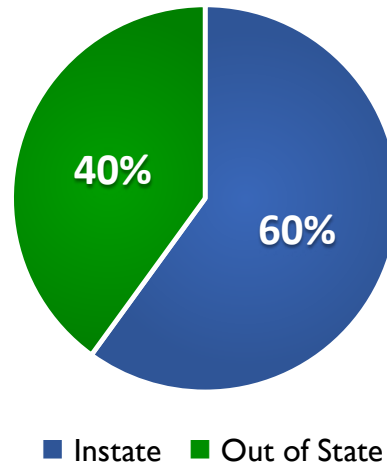


# PERCENT OF IN-STATE VERSUS OUT-OF-STATE PLACEMENTS

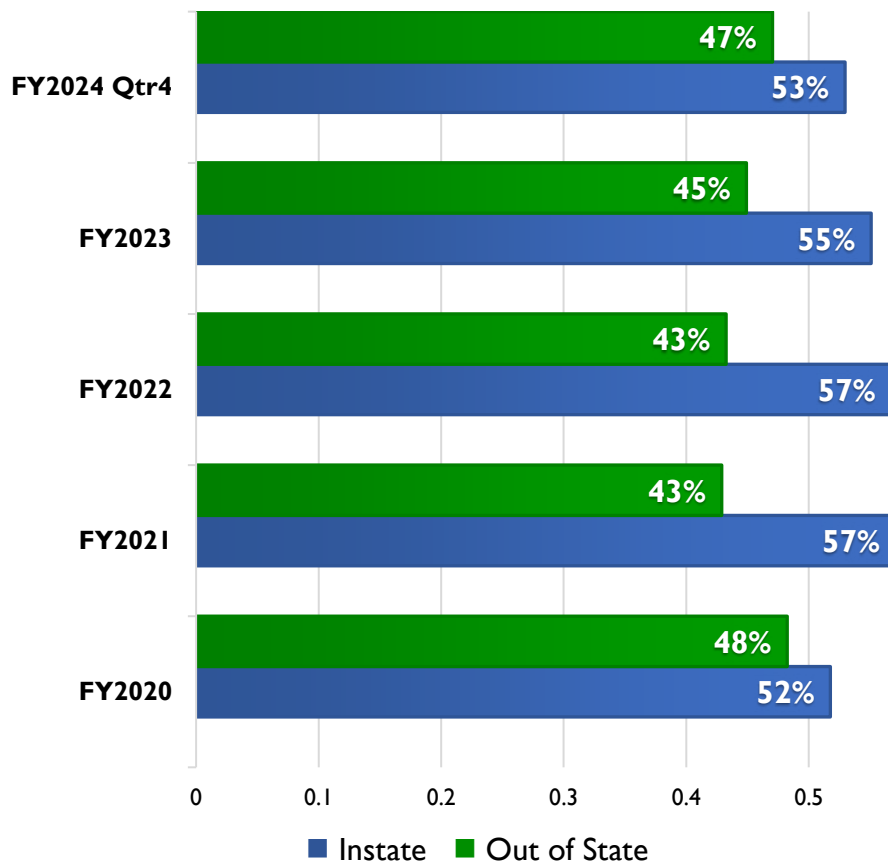
## Burlington Residential

The pie chart represents the breakdown of in-state placements compared to out-of-state placements for the fiscal year to date. If a child/youth was placed in more than one program in a fiscal year, they are represented more than once.

**Residential  
Burlington FY24 Q4**



## Statewide Residential



## Statewide

This chart represent the breakdown of in-state placements compared to out-of-state placements by fiscal year. If a child/youth was placed in more than one program in a fiscal year, they are represented more than once.



# Regional and State Residential Data FY2024 Quarter 4

## Hartford

Vermont Agency Of Human Services Residential Turn The Curve Advisory Committee  
280 State St., NOB 2 North, Waterbury, VT 05671-2090, (Questions? Call 802-241-0155)

### Context

#### **Regional information about children and youth who are placed in residential assessment or treatment programs.**

The information included in this report is focused on children/youth placed in residential facilities via the Departments for Children and Families (DCF), Mental Health (DMH) and Disabilities, Aging and Independent Living (DAIL). When a child/ youth is placed by one of these departments, the Agency of Education is responsible for the educational costs. This report does not include information about children and youth placed in residential facilities through Local Education Agencies (LEAs) as they have their own residential educational placement process separate from AHS.

The Vermont Agency of Human Services, Residential Turn the Curve Advisory Committee intends to provide regions with information about children and youth from your region who are placed in residential assessment or treatment programs to inform the local system of care discussions and to track trends over time. This information is also shared with the State Interagency Team (SIT).

### Contents

#### 2 STATE DATA

- a. Total Residential Bed Days by Dept. per Fiscal Year
- b. Total Child Count in Residential by Dept. per Fiscal Year
- c. In-state and Out-of-state Residential Count by Dept.

#### 3 STATE DEMOGRAPHICS

- a. Age Groups
- b. Custody
- c. Length of Stay
- d. Prior Residential Treatment.

#### 4 PRESENTING NEEDS

- a. Presenting Needs
- b. Developmental Disabilities
- c. Suicidality

#### 5-40 REGION SPECIFIC DATA

- a. Region's Total Bed Days
- b. Region's Monthly Child Count
- c. Statewide and Region's Percent of In-State and Out-of-State Placements

#### **Region:** Hartford

Data for this report includes children/youth from Hartford DCF-Family Services District Office, Clara Martin Center, and Health Care & Rehabilitation Services, Hartford region.

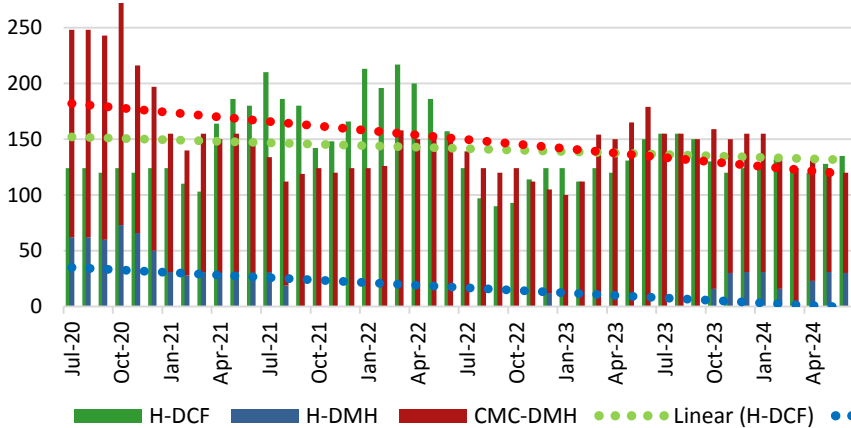
**Report Period:** FY2024 Qtr.4

# REGION SPECIFIC DATA

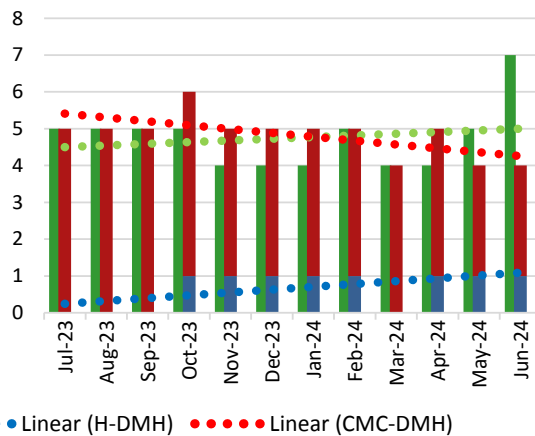
The following two regional charts represent the primary placing department. If a child changed custody status within a fiscal year (i. e. child in DCF custody returned to parent's custody but remained in the residential program), the child is counted under both Departments in the Total Child Count chart; the actual bed days are attributed to the respective department in Total Residential Bed Days.

DAIL places a very small number of children in residential facilities. Data is provided statewide only to eliminate the possibility of identification of individuals/families and potential HIPAA violation. The DA's DS program would have information specific to your region.

### Hartford & Clara Martin Center 4 Year Total Bed Days



### Hartford & Clara Martin Center Total Bed Days FY24Q4

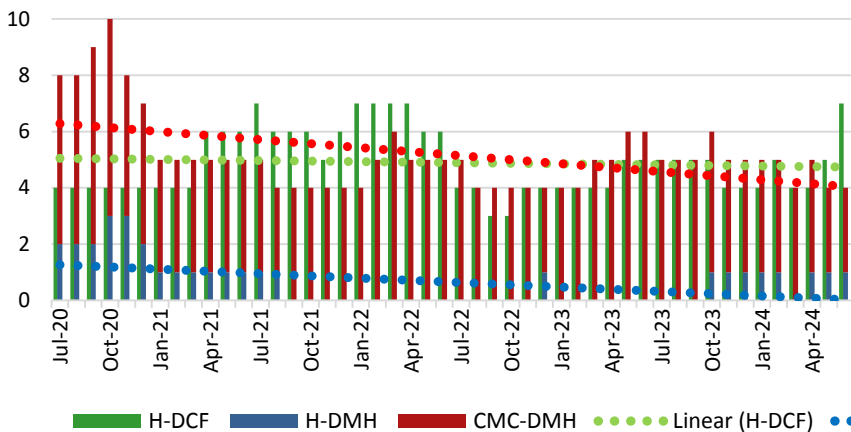


## Total Bed Days

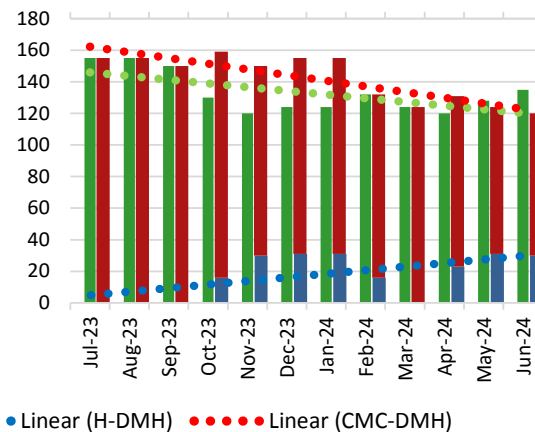
Total Bed Days is the total number of days a child/youth stays overnight in a residential program. For the Total Bed Days chart, children who were placed in more than

one program during the fiscal year are represented more than once so that all bed days are calculated.

### Hartford & Clara Martin Center 4 Year Monthly Count



### Hartford & Clara Martin Center Monthly Count FY24Q4



## Count of Child/Youth

For the Monthly Child Count in Residential by State fiscal year, the number of children is unduplicated within the fiscal year, such that if a child was placed in more than one

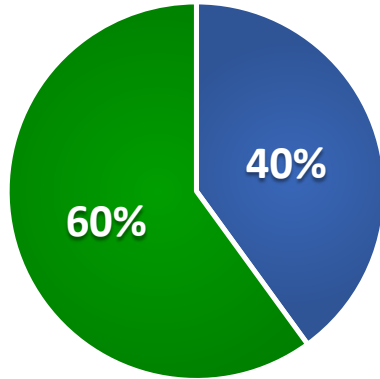
residential program during the fiscal year, the child is only counted once.



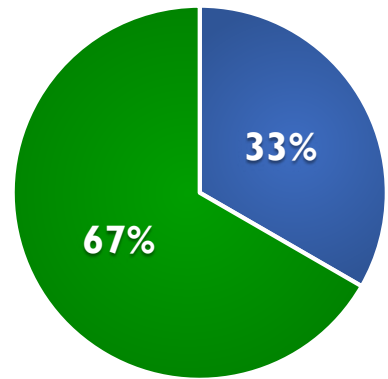
### Hartford and Clara Martin Center Residential

The pie chart represents the breakdown of in-state placements compared to out-of-state placements for the fiscal year to date. If a child/youth was placed in more than one program in a fiscal year, they are represented more than once.

**Residential Hartford FY24 Q4**

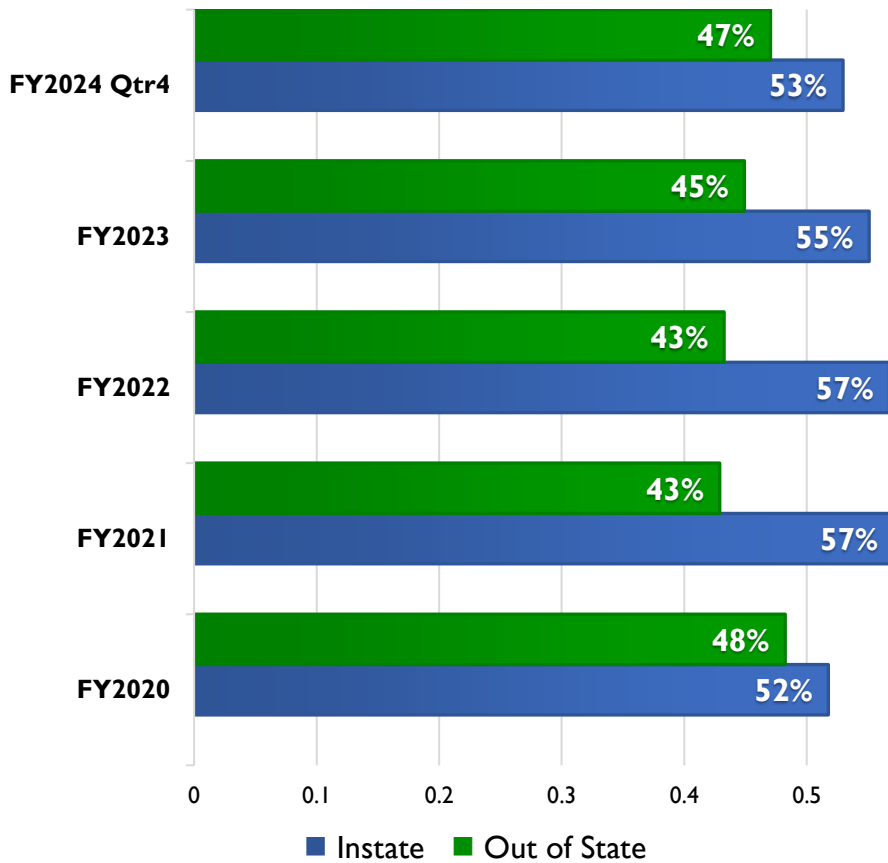


**Residential Clara Martin Center (DMH Youths only) FY24 Q4**



■ Instate ■ Out of State

### Statewide Residential



### Statewide

This chart represent the breakdown of in-state placements compared to out-of-state placements by fiscal year. If a child/youth was placed in more than one program in a fiscal year, they are represented more than once.



# Regional and State Residential Data FY2024 Quarter 4

## Middlebury

Vermont Agency Of Human Services Residential Turn The Curve Advisory Committee  
280 State St., NOB 2 North, Waterbury, VT 05671-2090, (Questions? Call 802-241-0155)

### Context

#### Regional information about children and youth who are placed in residential assessment or treatment programs.

The information included in this report is focused on children/youth placed in residential facilities via the Departments for Children and Families (DCF), Mental Health (DMH) and Disabilities, Aging and Independent Living (DAIL). When a child/ youth is placed by one of these departments, the Agency of Education is responsible for the educational costs. This report does not include information about children and youth placed in residential facilities through Local Education Agencies (LEAs) as they have their own residential educational placement process separate from AHS.

The Vermont Agency of Human Services, Residential Turn the Curve Advisory Committee intends to provide regions with information about children and youth from your region who are placed in residential assessment or treatment programs to inform the local system of care discussions and to track trends over time. This information is also shared with the State Interagency Team (SIT).

### Contents

#### 2 STATE DATA

- a. Total Residential Bed Days by Dept. per Fiscal Year
- b. Total Child Count in Residential by Dept. per Fiscal Year
- c. In-state and Out-of-state Residential Count by Dept.

#### 3 STATE DEMOGRAPHICS

- a. Age Groups
- b. Custody
- c. Length of Stay
- d. Prior Residential Treatment.

#### 4 PRESENTING NEEDS

- a. Presenting Needs
- b. Developmental Disabilities
- c. Suicidality

#### 5-40 REGION SPECIFIC DATA

- a. Region's Total Bed Days
- b. Region's Monthly Child Count
- c. Statewide and Region's Percent of In-State and Out-of-State Placements

#### Region: Middlebury

Data for this report includes children/youth from Middlebury DCF-Family Services District Office and Counseling Service of Addison County region.

Report Period: FY2024 Qtr.4

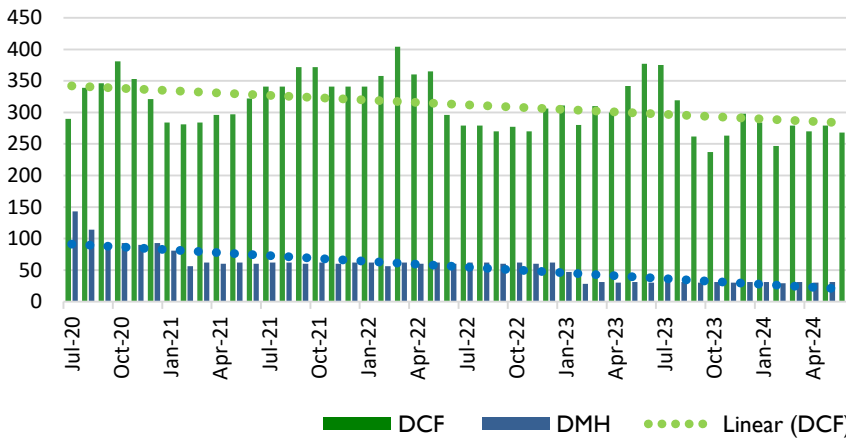


# REGION SPECIFIC DATA

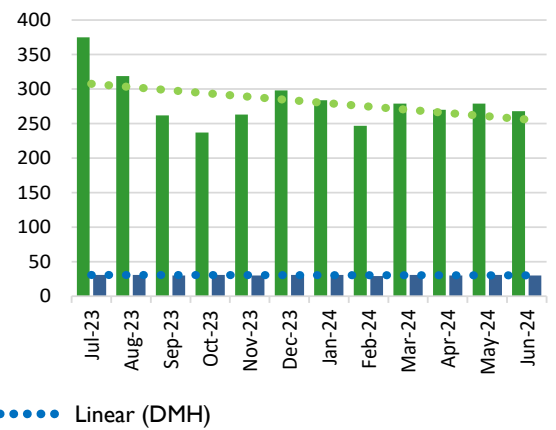
The following two regional charts represent the primary placing department. If a child changed custody status within a fiscal year (i. e. child in DCF custody returned to parent's custody but remained in the residential program), the child is counted under both Departments in the Total Child Count chart; the actual bed days are attributed to the respective department in Total Residential Bed Days.

DAIL places a very small number of children in residential facilities. Data is provided statewide only to eliminate the possibility of identification of individuals/families and potential HIPAA violation. The DA's DS program would have information specific to your region.

### Middlebury – 4 Year Total Bed Days



### Middlebury – Total Bed Days FY24Q4

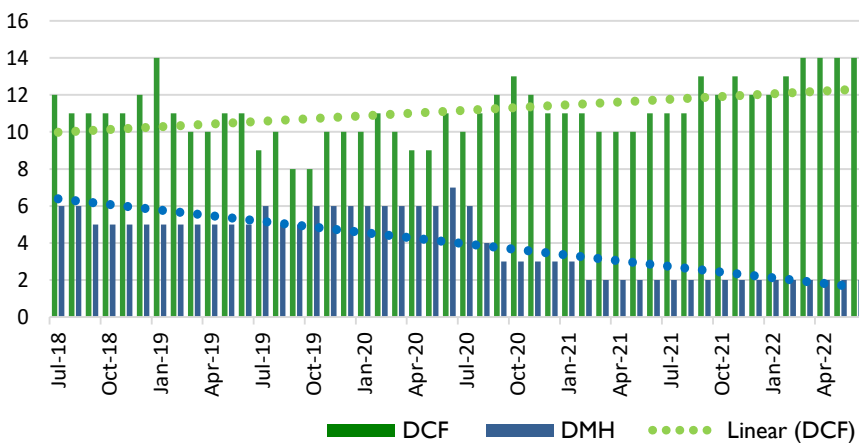


## Total Bed Days

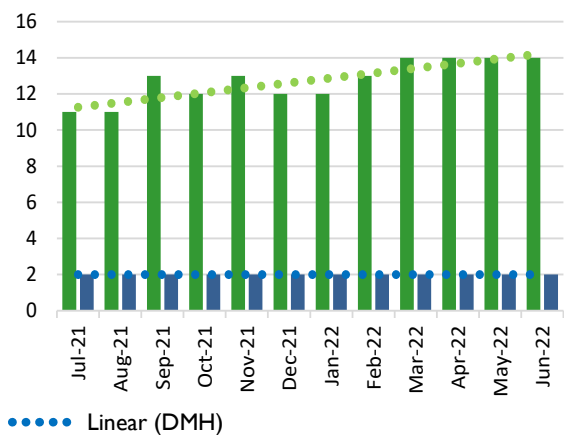
Total Bed Days is the total number of days a child/youth stays overnight in a residential program. For the Total Bed Days chart, children who were placed in more than

one program during the fiscal year are represented more than once so that all bed days are calculated.

### Middlebury – 4 Year Monthly Count



### Middlebury – Monthly Count FY24Q4



## Count of Child/Youth

For the Monthly Child Count in Residential by State fiscal year, the number of children is unduplicated within the fiscal year, such that if a child was placed in more than one

residential program during the fiscal year, the child is only counted once.

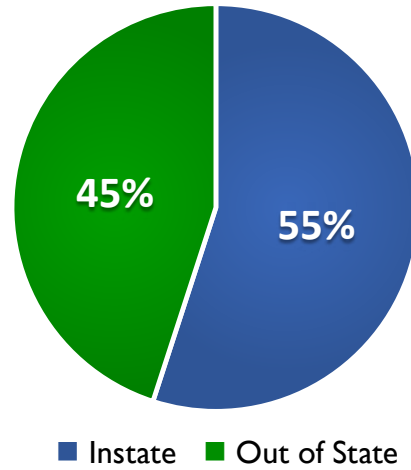


# PERCENT OF IN-STATE VERSUS OUT-OF-STATE PLACEMENTS

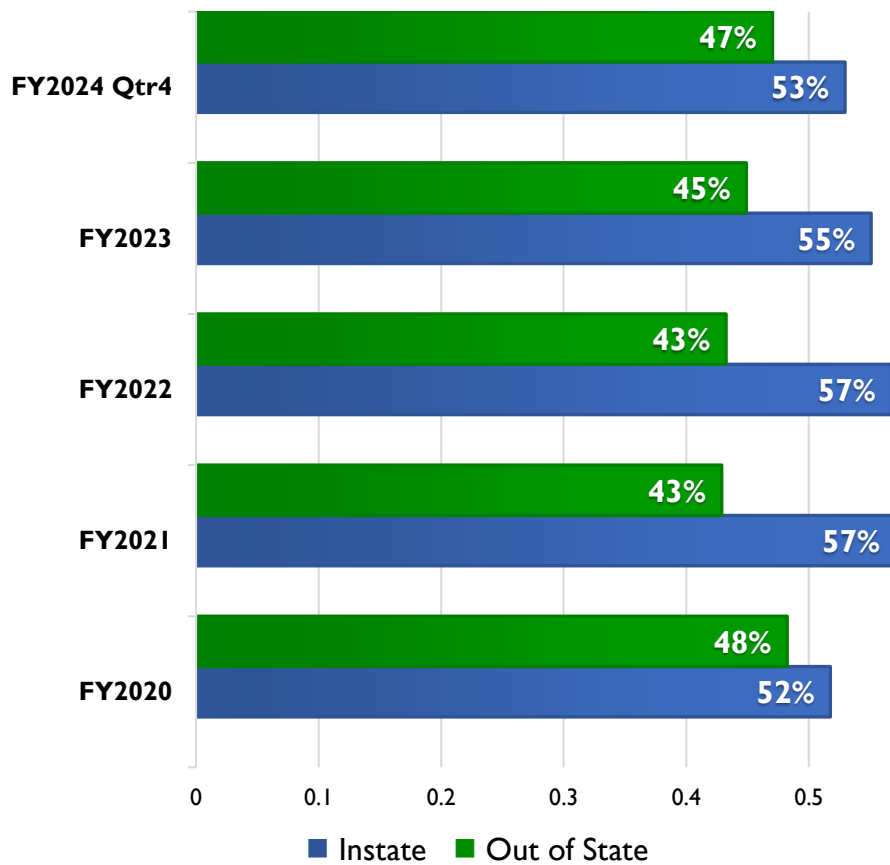
## Middlebury Residential

The pie chart represents the breakdown of in-state placements compared to out-of-state placements for the fiscal year to date. If a child/youth was placed in more than one program in a fiscal year, they are represented more than once.

## Residential Middlebury FY24 Q4



## Statewide Residential



## Statewide

This chart represent the breakdown of in-state placements compared to out-of-state placements by fiscal year. If a child/youth was placed in more than one program in a fiscal year, they are represented more than once.



# Regional and State Residential Data FY2024 Quarter 4

## Morrisville

Vermont Agency Of Human Services Residential Turn The Curve Advisory Committee  
280 State St., NOB 2 North, Waterbury, VT 05671-2090, (Questions? Call 802-241-0155)

### Context

#### **Regional information about children and youth who are placed in residential assessment or treatment programs.**

The information included in this report is focused on children/youth placed in residential facilities via the Departments for Children and Families (DCF), Mental Health (DMH) and Disabilities, Aging and Independent Living (DAIL). When a child/ youth is placed by one of these departments, the Agency of Education is responsible for the educational costs. This report does not include information about children and youth placed in residential facilities through Local Education Agencies (LEAs) as they have their own residential educational placement process separate from AHS.

The Vermont Agency of Human Services, Residential Turn the Curve Advisory Committee intends to provide regions with information about children and youth from your region who are placed in residential assessment or treatment programs to inform the local system of care discussions and to track trends over time. This information is also shared with the State Interagency Team (SIT).

### Contents

#### 2 STATE DATA

- a. Total Residential Bed Days by Dept. per Fiscal Year
- b. Total Child Count in Residential by Dept. per Fiscal Year
- c. In-state and Out-of-state Residential Count by Dept.

#### 3 STATE DEMOGRAPHICS

- a. Age Groups
- b. Custody
- c. Length of Stay
- d. Prior Residential Treatment.

#### 4 PRESENTING NEEDS

- a. Presenting Needs
- b. Developmental Disabilities
- c. Suicidality

#### 5-40 REGION SPECIFIC DATA

- a. Region's Total Bed Days
- b. Region's Monthly Child Count
- c. Statewide and Region's Percent of In-State and Out-of-State Placements

**Region:** Morrisville

Data for this report includes children/youth from Morrisville DCF-Family Services District Office and Lamoille County Mental Health region.

**Report Period:** FY2024 Qtr.4



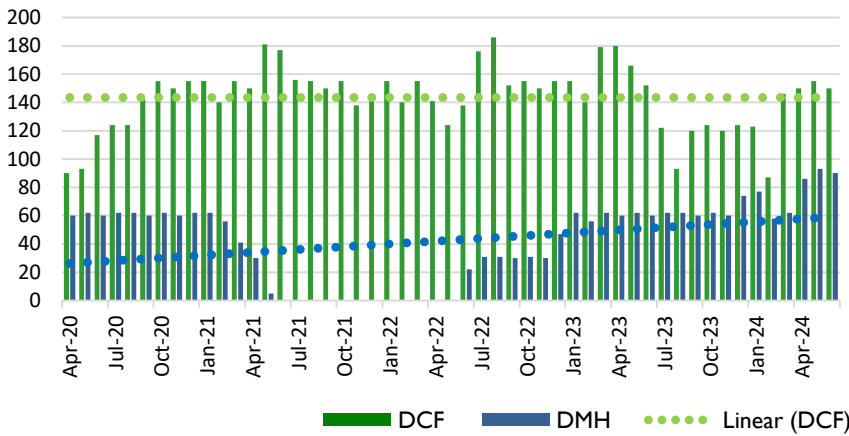


# REGION SPECIFIC DATA

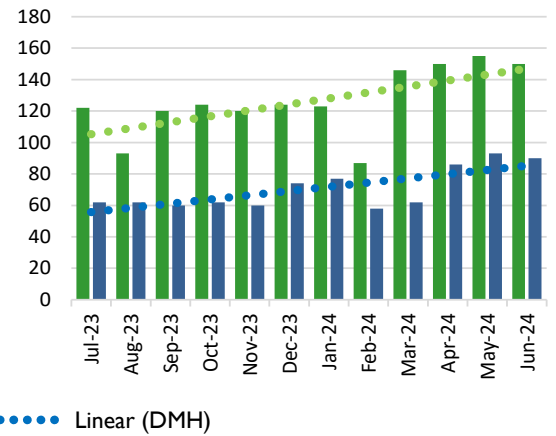
The following two regional charts represent the primary placing department. If a child changed custody status within a fiscal year (i. e. child in DCF custody returned to parent's custody but remained in the residential program), the child is counted under both Departments in the Total Child Count chart; the actual bed days are attributed to the respective department in Total Residential Bed Days.

DAIL places a very small number of children in residential facilities. Data is provided statewide only to eliminate the possibility of identification of individuals/families and potential HIPAA violation. The DA's DS program would have information specific to your region.

### Morrisville – 4 Year Total Bed Days



### Morrisville – Total Bed Days FY24Q4

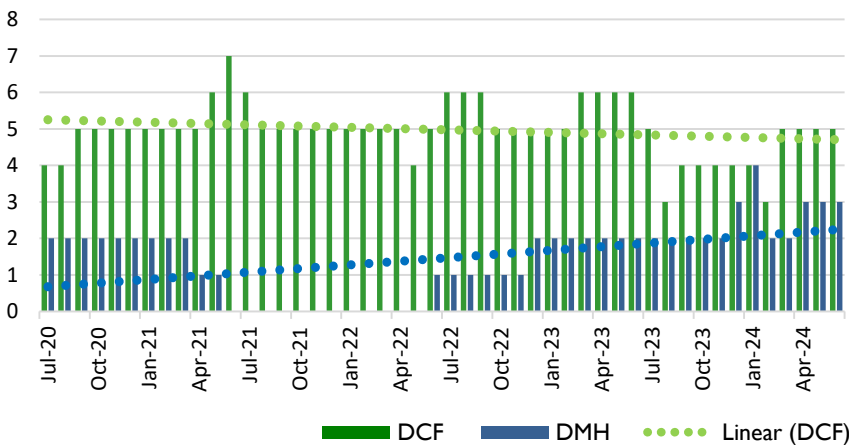


## Total Bed Days

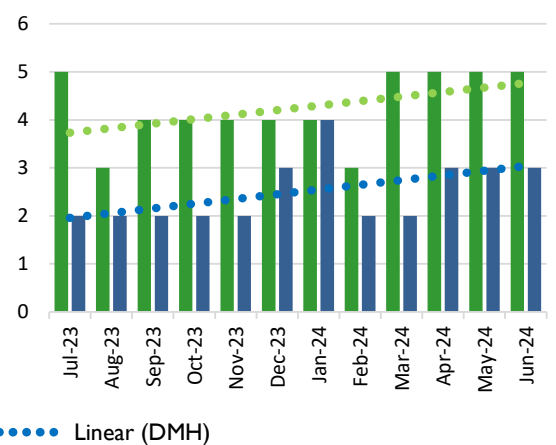
Total Bed Days is the total number of days a child/youth stays overnight in a residential program. For the Total Bed Days chart, children who were placed in more than

one program during the fiscal year are represented more than once so that all bed days are calculated.

### Morrisville – 4 Year Monthly Count



### Morrisville – Monthly Count FY24Q4



## Count of Child/Youth

For the Monthly Child Count in Residential by State fiscal year, the number of children is unduplicated within the fiscal year, such that if a child was placed in more than one

residential program during the fiscal year, the child is only counted once.

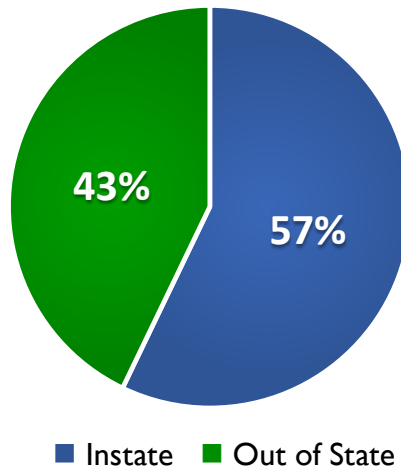


# PERCENT OF IN-STATE VERSUS OUT-OF-STATE PLACEMENTS

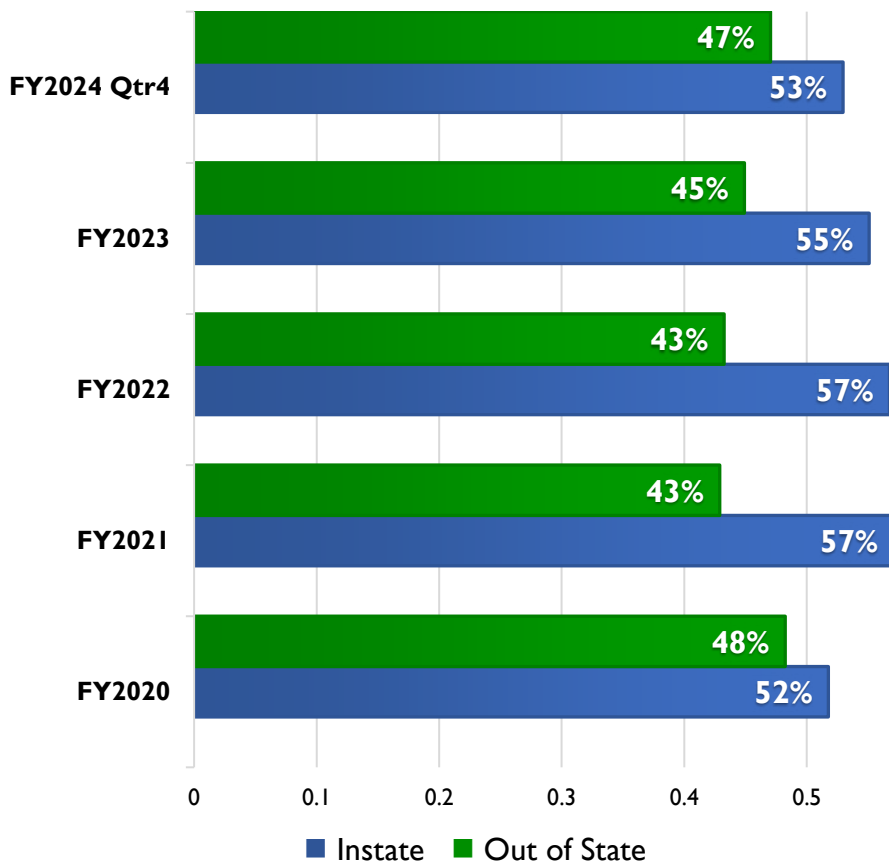
## Morrisville Residential

The pie chart represents the breakdown of in-state placements compared to out-of-state placements for the fiscal year to date. If a child/youth was placed in more than one program in a fiscal year, they are represented more than once.

**Residential  
Morrisville FY24 Q4**



## Statewide Residential



## Statewide

This chart represent the breakdown of in-state placements compared to out-of-state placements by fiscal year. If a child/youth was placed in more than one program in a fiscal year, they are represented more than once.



# Regional and State Residential Data FY2024 Quarter 4

## Newport

Vermont Agency Of Human Services Residential Turn The Curve Advisory Committee  
280 State St., NOB 2 North, Waterbury, VT 05671-2090, (Questions? Call 802-241-0155)

### Context

#### Regional information about children and youth who are placed in residential assessment or treatment programs.

The information included in this report is focused on children/youth placed in residential facilities via the Departments for Children and Families (DCF), Mental Health (DMH) and Disabilities, Aging and Independent Living (DAIL). When a child/ youth is placed by one of these departments, the Agency of Education is responsible for the educational costs. This report does not include information about children and youth placed in residential facilities through Local Education Agencies (LEAs) as they have their own residential educational placement process separate from AHS.

The Vermont Agency of Human Services, Residential Turn the Curve Advisory Committee intends to provide regions with information about children and youth from your region who are placed in residential assessment or treatment programs to inform the local system of care discussions and to track trends over time. This information is also shared with the State Interagency Team (SIT).

### Contents

#### 2 STATE DATA

- a. Total Residential Bed Days by Dept. per Fiscal Year
- b. Total Child Count in Residential by Dept. per Fiscal Year
- c. In-state and Out-of-state Residential Count by Dept.

#### 3 STATE DEMOGRAPHICS

- a. Age Groups
- b. Custody
- c. Length of Stay
- d. Prior Residential Treatment.

#### 4 PRESENTING NEEDS

- a. Presenting Needs
- b. Developmental Disabilities
- c. Suicidality

#### 5-40 REGION SPECIFIC DATA

- a. Region's Total Bed Days
- b. Region's Monthly Child Count
- c. Statewide and Region's Percent of In-State and Out-of-State Placements

**Region:** Newport

Data for this report includes children/youth from Newport DCF-Family Services District Office and Northeast Kingdom Human Services-Newport.

**Report Period:** FY2024 Qtr.4

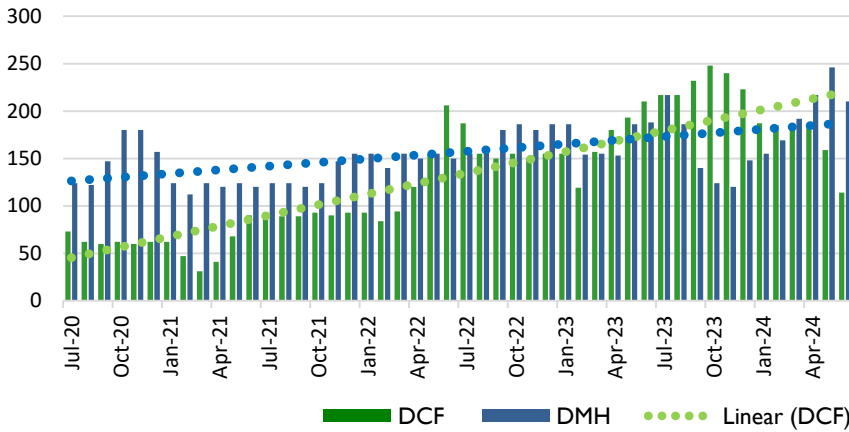


# REGION SPECIFIC DATA

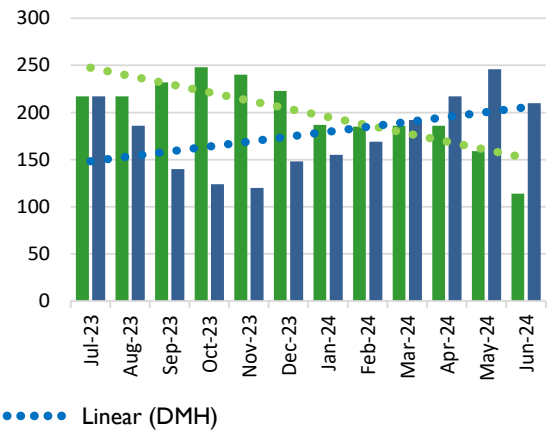
The following two regional charts represent the primary placing department. If a child changed custody status within a fiscal year (i. e. child in DCF custody returned to parent's custody but remained in the residential program), the child is counted under both Departments in the Total Child Count chart; the actual bed days are attributed to the respective department in Total Residential Bed Days.

DAIL places a very small number of children in residential facilities. Data is provided statewide only to eliminate the possibility of identification of individuals/families and potential HIPAA violation. The DA's DS program would have information specific to your region.

### Newport – 4 Year Total Bed Days



### Newport – Total Bed Days FY24Q4

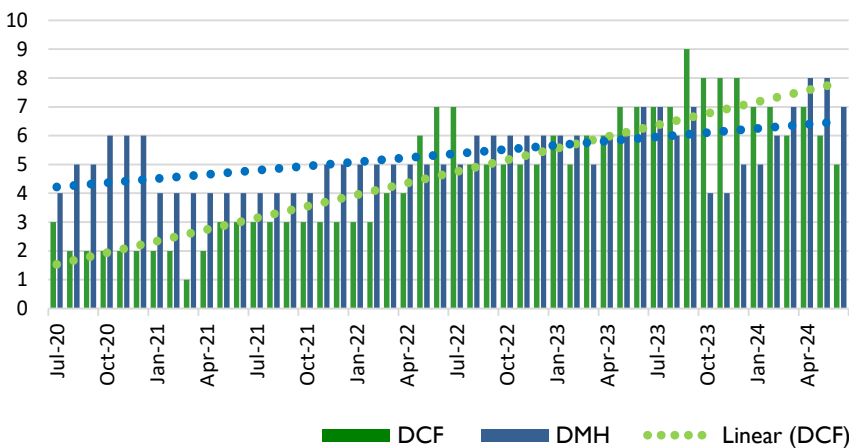


## Total Bed Days

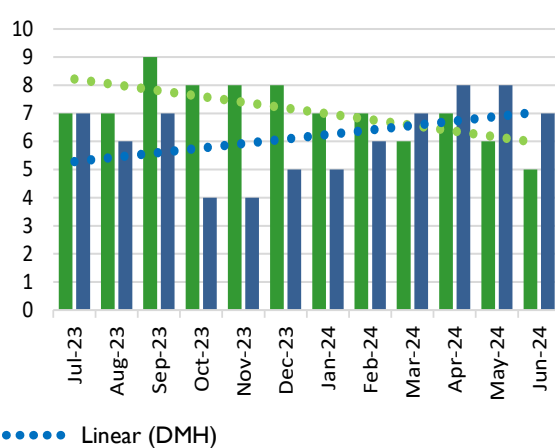
Total Bed Days is the total number of days a child/youth stays overnight in a residential program. For the Total Bed Days chart, children who were placed in more than

one program during the fiscal year are represented more than once so that all bed days are calculated.

### Newport – 4 Year Monthly Count



### Newport – Monthly Count FY24Q4



## Count of Child/Youth

For the Monthly Child Count in Residential by State fiscal year, the number of children is unduplicated within the fiscal year, such that if a child was placed in more than one

residential program during the fiscal year, the child is only counted once.

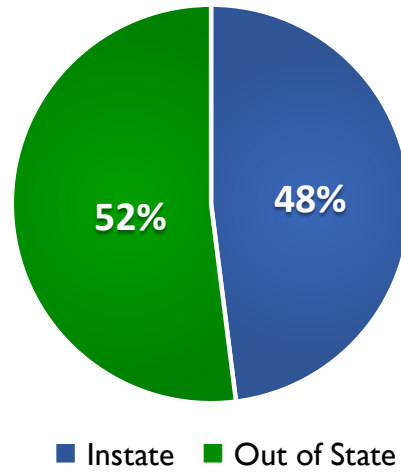


# PERCENT OF IN-STATE VERSUS OUT-OF-STATE PLACEMENTS

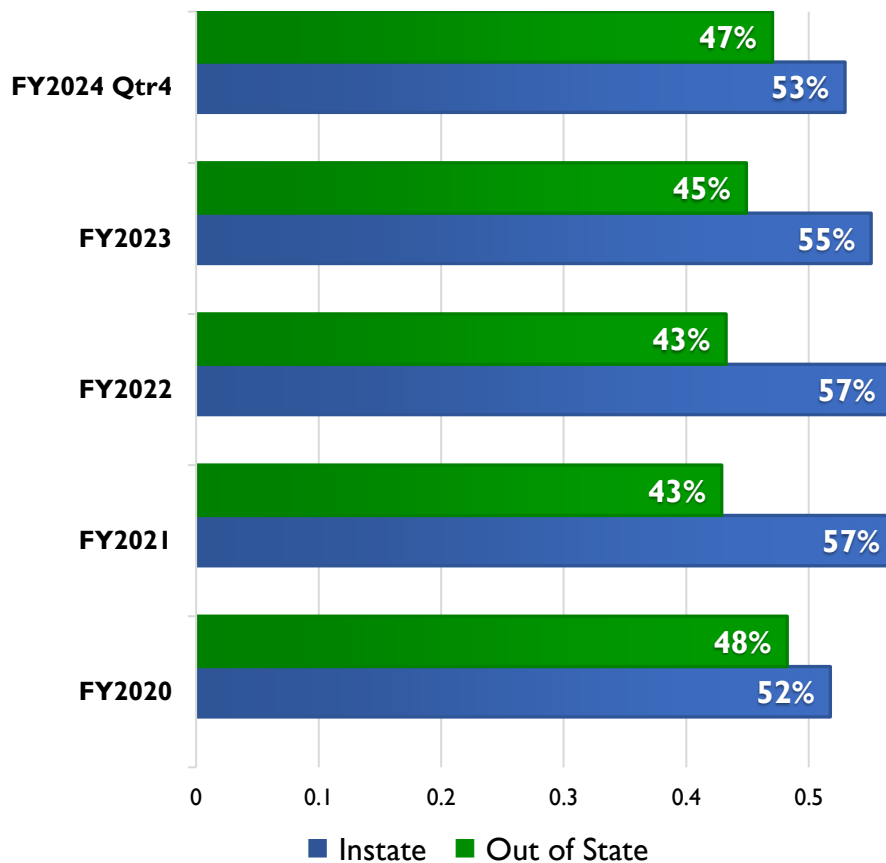
## Newport Residential

The pie chart represents the breakdown of in-state placements compared to out-of-state placements for the fiscal year to date. If a child/youth was placed in more than one program in a fiscal year, they are represented more than once.

## Residential Newport FY24 Q4



## Statewide Residential



## Statewide

This chart represent the breakdown of in-state placements compared to out-of-state placements by fiscal year. If a child/youth was placed in more than one program in a fiscal year, they are represented more than once.



# Regional and State Residential Data FY2024 Quarter 4

## Rutland

Vermont Agency Of Human Services Residential Turn The Curve Advisory Committee  
280 State St., NOB 2 North, Waterbury, VT 05671-2090, (Questions? Call 802-241-0155)

### Context

#### **Regional information about children and youth who are placed in residential assessment or treatment programs.**

The information included in this report is focused on children/youth placed in residential facilities via the Departments for Children and Families (DCF), Mental Health (DMH) and Disabilities, Aging and Independent Living (DAIL). When a child/ youth is placed by one of these departments, the Agency of Education is responsible for the educational costs. This report does not include information about children and youth placed in residential facilities through Local Education Agencies (LEAs) as they have their own residential educational placement process separate from AHS.

The Vermont Agency of Human Services, Residential Turn the Curve Advisory Committee intends to provide regions with information about children and youth from your region who are placed in residential assessment or treatment programs to inform the local system of care discussions and to track trends over time. This information is also shared with the State Interagency Team (SIT).

### Contents

#### 2 STATE DATA

- a. Total Residential Bed Days by Dept. per Fiscal Year
- b. Total Child Count in Residential by Dept. per Fiscal Year
- c. In-state and Out-of-state Residential Count by Dept.

#### 3 STATE DEMOGRAPHICS

- a. Age Groups
- b. Custody
- c. Length of Stay
- d. Prior Residential Treatment.

#### 4 PRESENTING NEEDS

- a. Presenting Needs
- b. Developmental Disabilities
- c. Suicidality

#### 5-40 REGION SPECIFIC DATA

- a. Region's Total Bed Days
- b. Region's Monthly Child Count
- c. Statewide and Region's Percent of In-State and Out-of-State Placements

#### **Region:** Rutland

Data for this report includes children/youth from Rutland DCF-Family Services District Office and Rutland Mental Health Services region.

**Report Period:** FY2024 Qtr.4

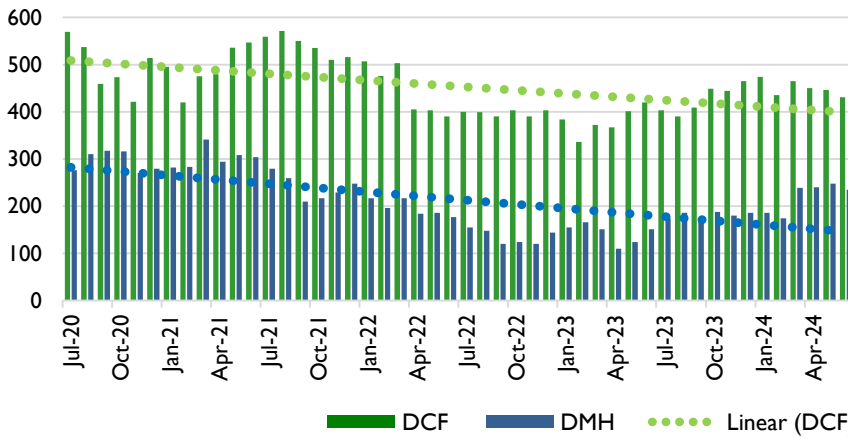


# REGION SPECIFIC DATA

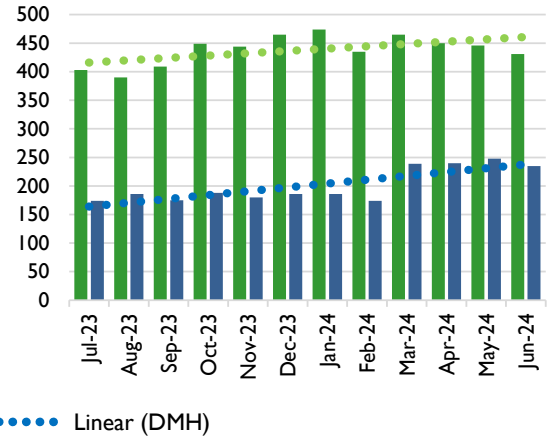
The following two regional charts represent the primary placing department. If a child changed custody status within a fiscal year (i. e. child in DCF custody returned to parent's custody but remained in the residential program), the child is counted under both Departments in the Total Child Count chart; the actual bed days are attributed to the respective department in Total Residential Bed Days.

DAIL places a very small number of children in residential facilities. Data is provided statewide only to eliminate the possibility of identification of individuals/families and potential HIPAA violation. The DA's DS program would have information specific to your region.

### Rutland – 4 Year Total Bed Days



### Rutland – Total Bed Days FY24Q4

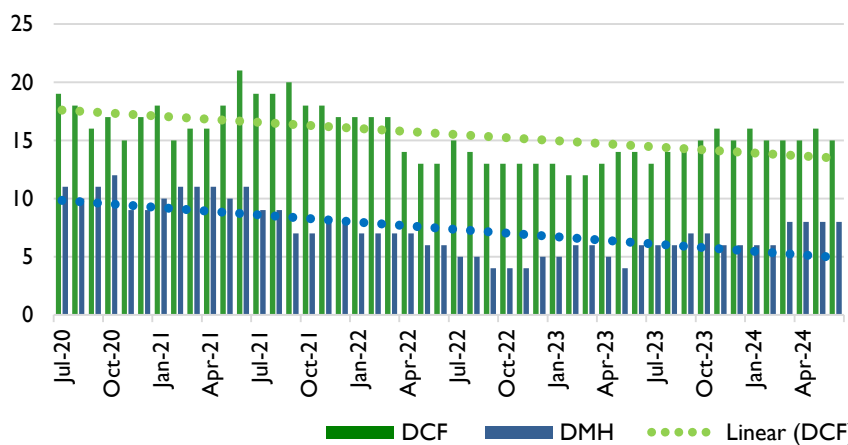


## Total Bed Days

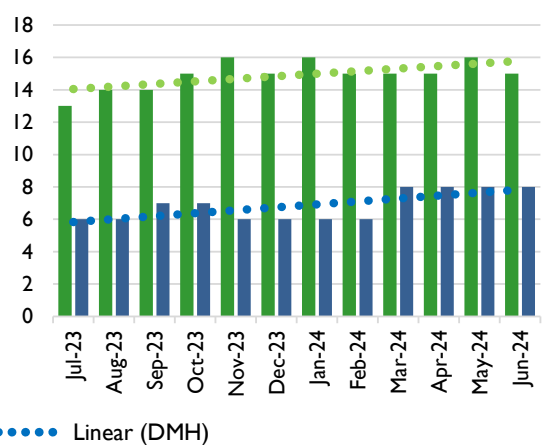
Total Bed Days is the total number of days a child/youth stays overnight in a residential program. For the Total Bed Days chart, children who were placed in more than

one program during the fiscal year are represented more than once so that all bed days are calculated.

### Rutland – 4 Year Monthly Count



### Rutland – Monthly Count FY24Q4



## Count of Child/Youth

For the Monthly Child Count in Residential by State fiscal year, the number of children is unduplicated within the fiscal year, such that if a child was placed in more than one

residential program during the fiscal year, the child is only counted once.

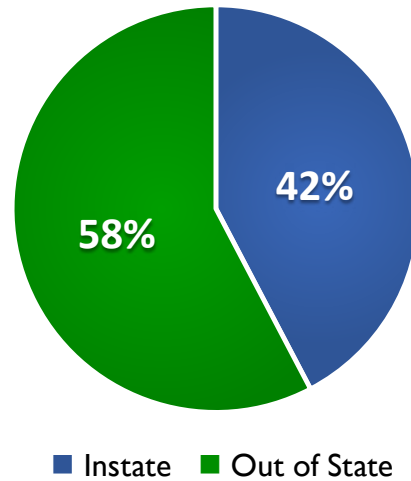


# PERCENT OF IN-STATE VERSUS OUT-OF-STATE PLACEMENTS

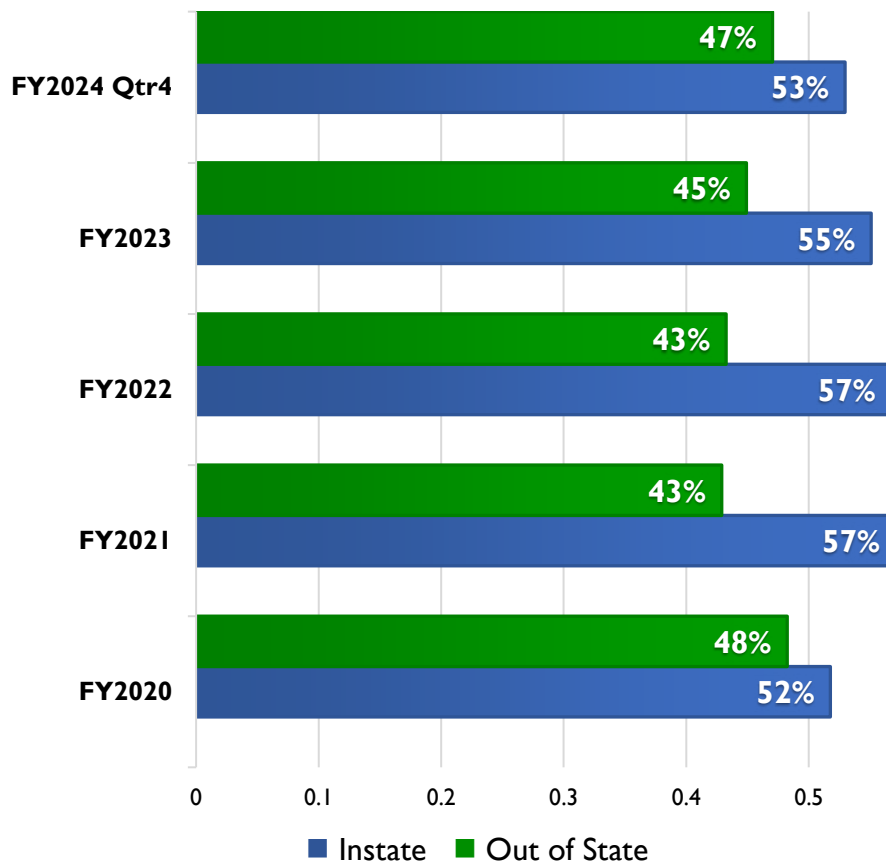
## Rutland Residential

The pie chart represents the breakdown of in-state placements compared to out-of-state placements for the fiscal year to date. If a child/youth was placed in more than one program in a fiscal year, they are represented more than once.

**Residential  
Rutland FY24 Q4**



## Statewide Residential



## Statewide

This chart represent the breakdown of in-state placements compared to out-of-state placements by fiscal year. If a child/youth was placed in more than one program in a fiscal year, they are represented more than once.





# Regional and State Residential Data FY2024 Quarter 4

## Springfield

Vermont Agency Of Human Services Residential Turn The Curve Advisory Committee  
280 State St., NOB 2 North, Waterbury, VT 05671-2090, (Questions? Call 802-241-0155)

### Context

#### Regional information about children and youth who are placed in residential assessment or treatment programs.

The information included in this report is focused on children/youth placed in residential facilities via the Departments for Children and Families (DCF), Mental Health (DMH) and Disabilities, Aging and Independent Living (DAIL). When a child/ youth is placed by one of these departments, the Agency of Education is responsible for the educational costs. This report does not include information about children and youth placed in residential facilities through Local Education Agencies (LEAs) as they have their own residential educational placement process separate from AHS.

The Vermont Agency of Human Services, Residential Turn the Curve Advisory Committee intends to provide regions with information about children and youth from your region who are placed in residential assessment or treatment programs to inform the local system of care discussions and to track trends over time. This information is also shared with the State Interagency Team (SIT).

### Contents

#### 2 STATE DATA

- a. Total Residential Bed Days by Dept. per Fiscal Year
- b. Total Child Count in Residential by Dept. per Fiscal Year
- c. In-state and Out-of-state Residential Count by Dept.

#### 3 STATE DEMOGRAPHICS

- a. Age Groups
- b. Custody
- c. Length of Stay
- d. Prior Residential Treatment.

#### 4 PRESENTING NEEDS

- a. Presenting Needs
- b. Developmental Disabilities
- c. Suicidality

#### 5-40 REGION SPECIFIC DATA

- a. Region's Total Bed Days
- b. Region's Monthly Child Count
- c. Statewide and Region's Percent of In-State and Out-of-State Placements

**Region:** Springfield

Data for this report includes children/youth from Springfield DCF-Family Services District Office and Health Care & Rehabilitation Services - Springfield region.

**Report Period:** FY2024 Qtr.4

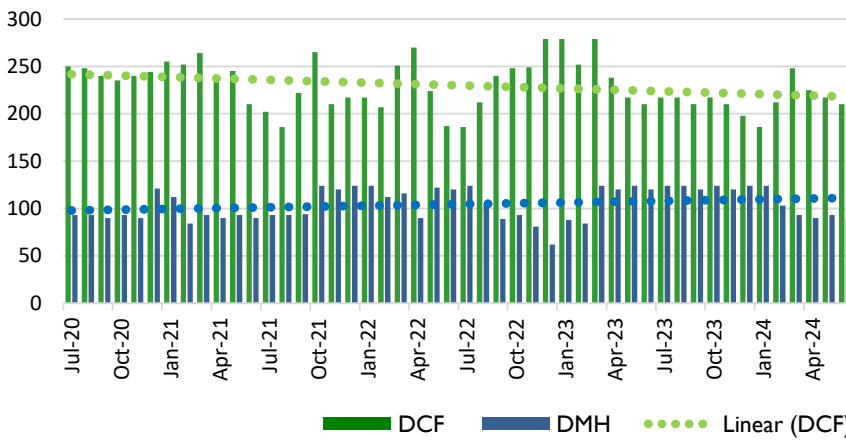


# REGION SPECIFIC DATA

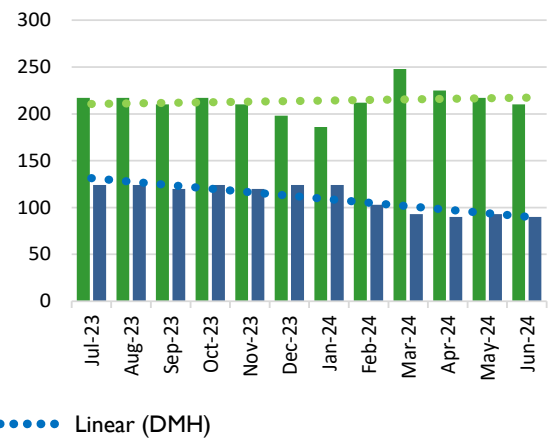
The following two regional charts represent the primary placing department. If a child changed custody status within a fiscal year (i. e. child in DCF custody returned to parent's custody but remained in the residential program), the child is counted under both Departments in the Total Child Count chart; the actual bed days are attributed to the respective department in Total Residential Bed Days.

DAIL places a very small number of children in residential facilities. Data is provided statewide only to eliminate the possibility of identification of individuals/families and potential HIPAA violation. The DA's DS program would have information specific to your region.

### Springfield – 4 Year Total Bed Days



### Springfield – Total Bed Days FY24Q4

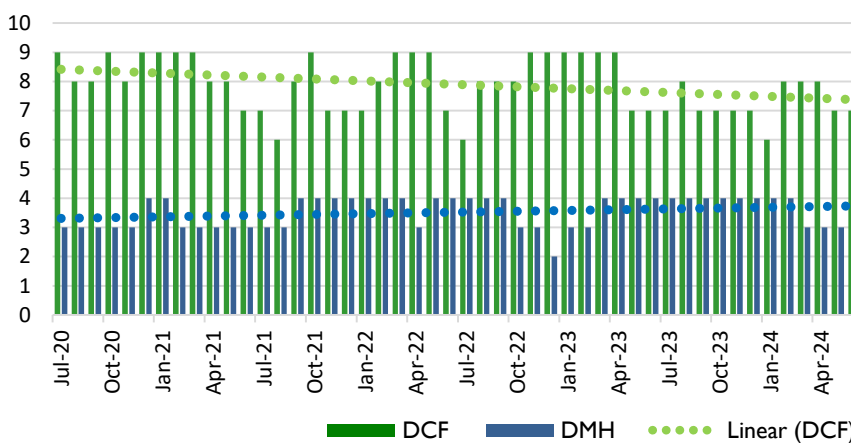


## Total Bed Days

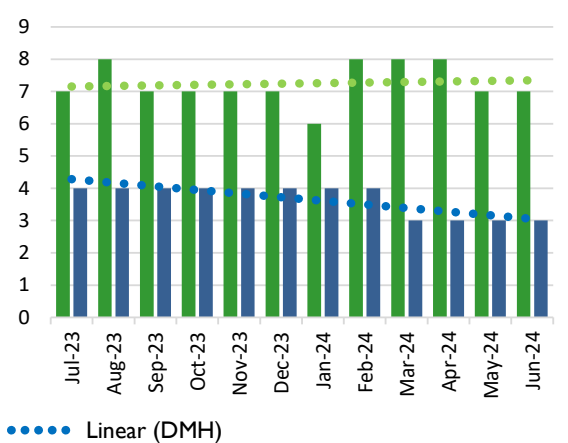
Total Bed Days is the total number of days a child/youth stays overnight in a residential program. For the Total Bed Days chart, children who were placed in more than

one program during the fiscal year are represented more than once so that all bed days are calculated.

### Springfield – 4 Year Monthly Count



### Springfield – Monthly Count FY24Q4



## Count of Child/Youth

For the Monthly Child Count in Residential by State fiscal year, the number of children is unduplicated within the fiscal year, such that if a child was placed in more than one

residential program during the fiscal year, the child is only counted once.

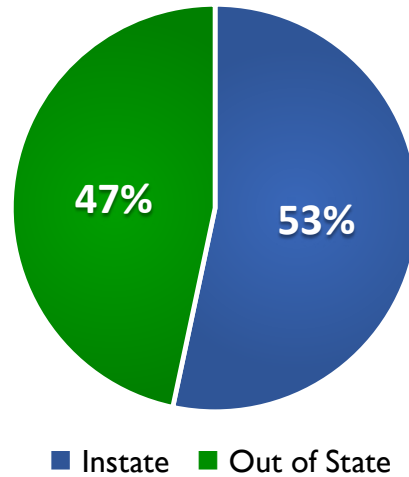


# PERCENT OF IN-STATE VERSUS OUT-OF-STATE PLACEMENTS

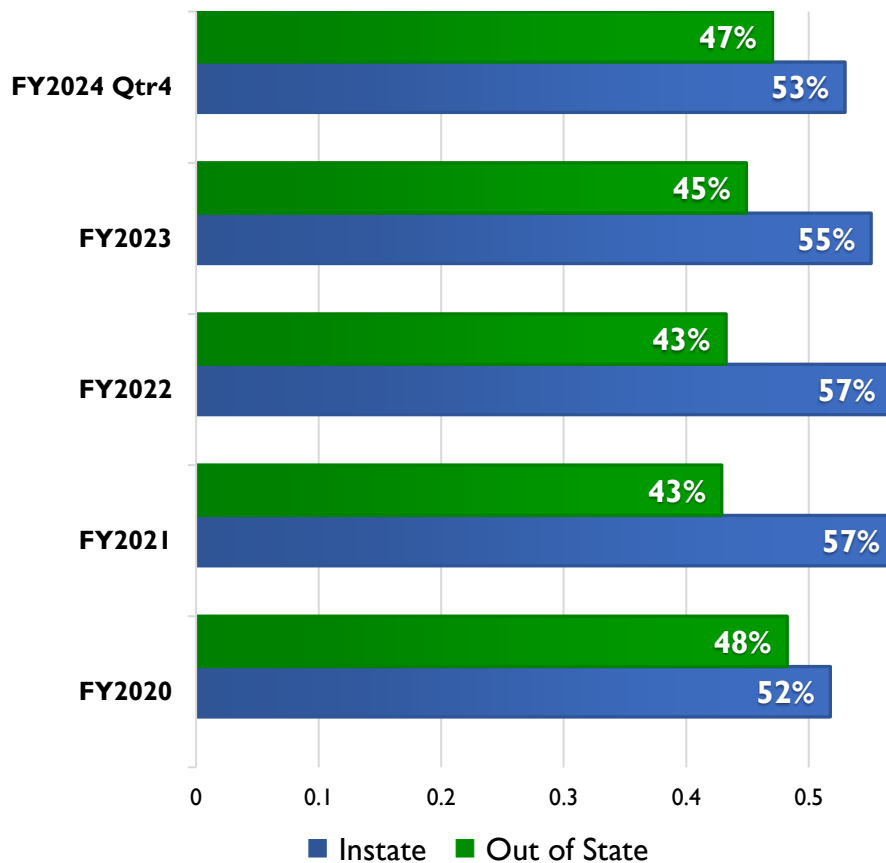
## Springfield Residential

The pie chart represents the breakdown of in-state placements compared to out-of-state placements for the fiscal year to date. If a child/youth was placed in more than one program in a fiscal year, they are represented more than once.

**Residential  
Springfield FY24 Q4**



## Statewide Residential



## Statewide

This chart represent the breakdown of in-state placements compared to out-of-state placements by fiscal year. If a child/youth was placed in more than one program in a fiscal year, they are represented more than once.



# Regional and State Residential Data FY2024 Quarter 4

## St. Albans

Vermont Agency Of Human Services Residential Turn The Curve Advisory Committee  
280 State St., NOB 2 North, Waterbury, VT 05671-2090, (Questions? Call 802-241-0155)

### Context

#### Regional information about children and youth who are placed in residential assessment or treatment programs.

The information included in this report is focused on children/youth placed in residential facilities via the Departments for Children and Families (DCF), Mental Health (DMH) and Disabilities, Aging and Independent Living (DAIL). When a child/ youth is placed by one of these departments, the Agency of Education is responsible for the educational costs. This report does not include information about children and youth placed in residential facilities through Local Education Agencies (LEAs) as they have their own residential educational placement process separate from AHS.

The Vermont Agency of Human Services, Residential Turn the Curve Advisory Committee intends to provide regions with information about children and youth from your region who are placed in residential assessment or treatment programs to inform the local system of care discussions and to track trends over time. This information is also shared with the State Interagency Team (SIT).

### Contents

#### 2 STATE DATA

- a. Total Residential Bed Days by Dept. per Fiscal Year
- b. Total Child Count in Residential by Dept. per Fiscal Year
- c. In-state and Out-of-state Residential Count by Dept.

#### 3 STATE DEMOGRAPHICS

- a. Age Groups
- b. Custody
- c. Length of Stay
- d. Prior Residential Treatment.

#### 4 PRESENTING NEEDS

- a. Presenting Needs
- b. Developmental Disabilities
- c. Suicidality

#### 5-40 REGION SPECIFIC DATA

- a. Region's Total Bed Days
- b. Region's Monthly Child Count
- c. Statewide and Region's Percent of In-State and Out-of-State Placements

**Region:** St. Albans

Data for this report includes children/youth from St. Albans DCF-Family Services District Office and Northwestern Counseling & Support Services region.

**Report Period:** FY2024 Qtr.4

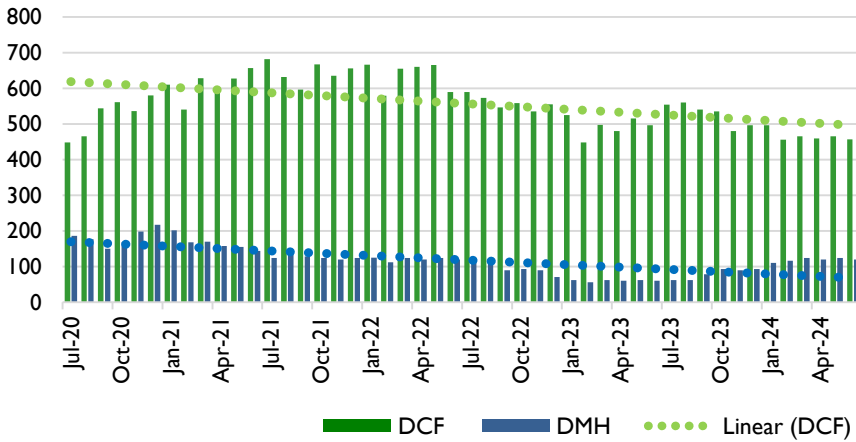


# REGION SPECIFIC DATA

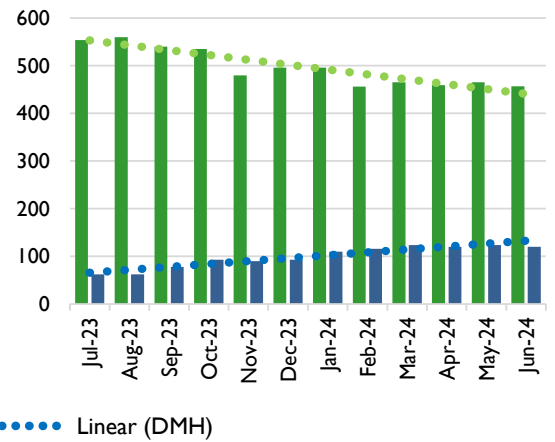
The following two regional charts represent the primary placing department. If a child changed custody status within a fiscal year (i. e. child in DCF custody returned to parent's custody but remained in the residential program), the child is counted under both Departments in the Total Child Count chart; the actual bed days are attributed to the respective department in Total Residential Bed Days.

DAIL places a very small number of children in residential facilities. Data is provided statewide only to eliminate the possibility of identification of individuals/families and potential HIPAA violation. The DA's DS program would have information specific to your region.

**St. Albans – 4 Year Total Bed Days**



**St. Albans – Total Bed Days FY24Q4**

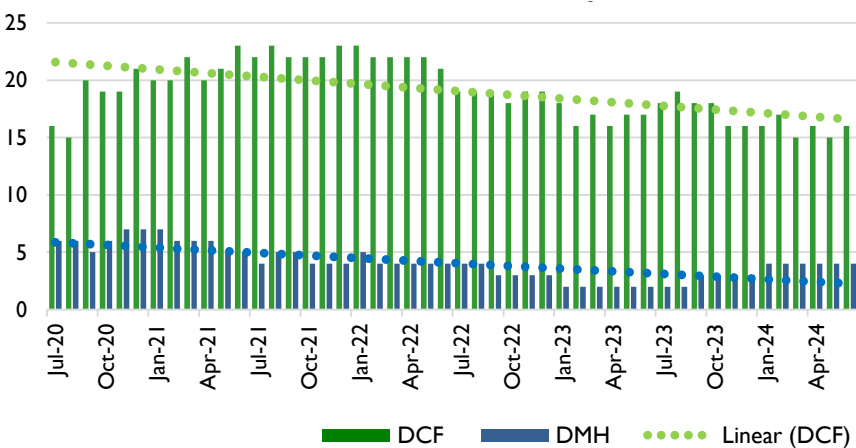


## Total Bed Days

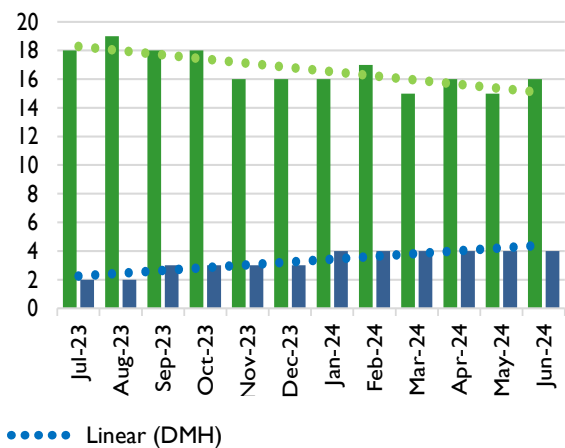
Total Bed Days is the total number of days a child/youth stays overnight in a residential program. For the Total Bed Days chart, children who were placed in more than

one program during the fiscal year are represented more than once so that all bed days are calculated.

**St. Albans – 4 Year Monthly Count**



**St. Albans – Monthly Count FY24Q4**



## Count of Child/Youth

For the Monthly Child Count in Residential by State fiscal year, the number of children is unduplicated within the fiscal year, such that if a child was placed in more than one

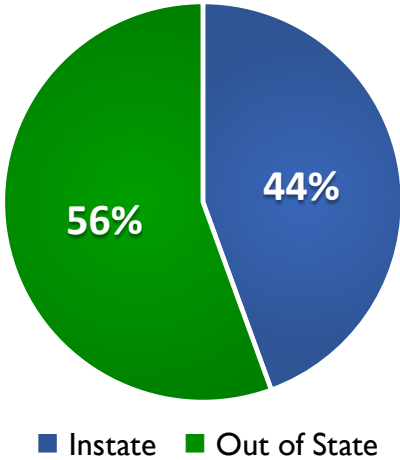
residential program during the fiscal year, the child is only counted once.



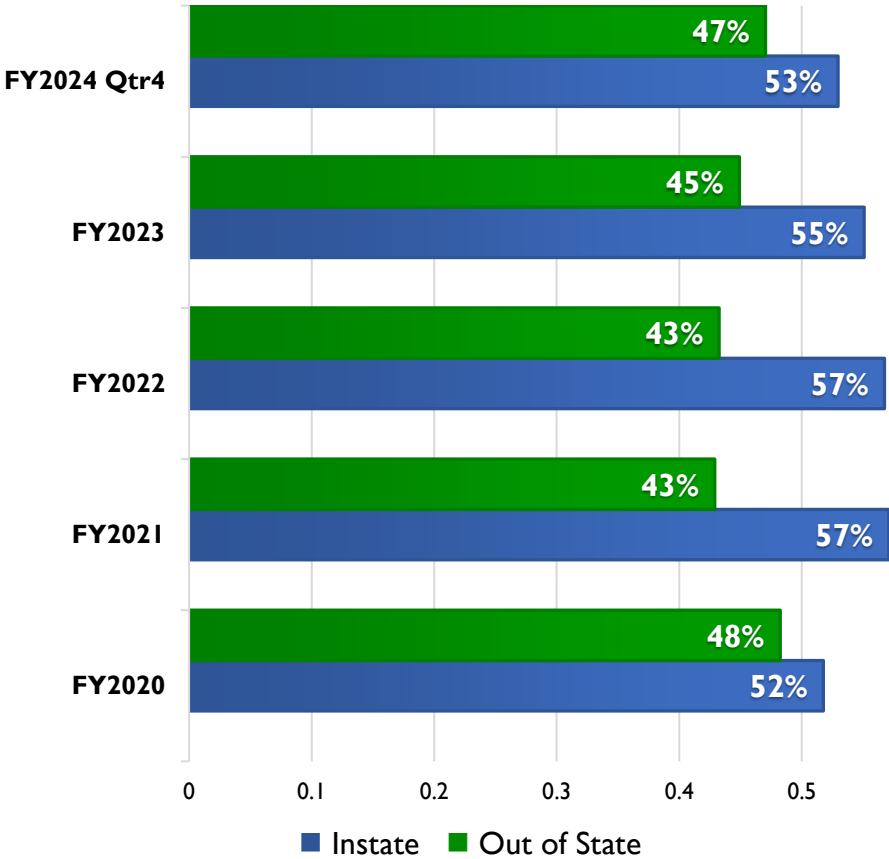
### Residential St. Albans FY24 Q4

#### St. Albans Residential

The pie chart represents the breakdown of in-state placements compared to out-of-state placements for the fiscal year to date. If a child/youth was placed in more than one program in a fiscal year, they are represented more than once.



### Statewide Residential



#### Statewide

This chart represent the breakdown of in-state placements compared to out-of-state placements by fiscal year. If a child/youth was placed in more than one program in a fiscal year, they are represented more than once.



# Regional and State Residential Data FY2024 Quarter 4

## St. Johnsbury

Vermont Agency Of Human Services Residential Turn The Curve Advisory Committee  
280 State St., NOB 2 North, Waterbury, VT 05671-2090, (Questions? Call 802-241-0155)

### Context

#### Regional information about children and youth who are placed in residential assessment or treatment programs.

The information included in this report is focused on children/youth placed in residential facilities via the Departments for Children and Families (DCF), Mental Health (DMH) and Disabilities, Aging and Independent Living (DAIL). When a child/ youth is placed by one of these departments, the Agency of Education is responsible for the educational costs. This report does not include information about children and youth placed in residential facilities through Local Education Agencies (LEAs) as they have their own residential educational placement process separate from AHS.

The Vermont Agency of Human Services, Residential Turn the Curve Advisory Committee intends to provide regions with information about children and youth from your region who are placed in residential assessment or treatment programs to inform the local system of care discussions and to track trends over time. This information is also shared with the State Interagency Team (SIT).

### Contents

#### 2 STATE DATA

- a. Total Residential Bed Days by Dept. per Fiscal Year
- b. Total Child Count in Residential by Dept. per Fiscal Year
- c. In-state and Out-of-state Residential Count by Dept.

#### 3 STATE DEMOGRAPHICS

- a. Age Groups
- b. Custody
- c. Length of Stay
- d. Prior Residential Treatment.

#### 4 PRESENTING NEEDS

- a. Presenting Needs
- b. Developmental Disabilities
- c. Suicidality

#### 5-40 REGION SPECIFIC DATA

- a. Region's Total Bed Days
- b. Region's Monthly Child Count
- c. Statewide and Region's Percent of In-State and Out-of-State Placements

**Region:** St. Johnsbury

Data for this report includes children/youth from St. Johnsbury DCF-Family Services District Office and Northeast Kingdom Human Services, St. Johnsbury region.

**Report Period:** FY2024 Qtr.4

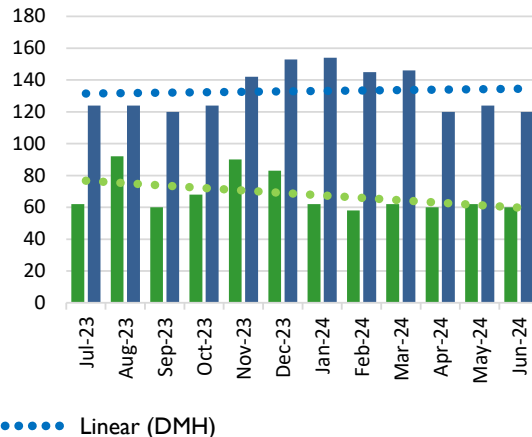
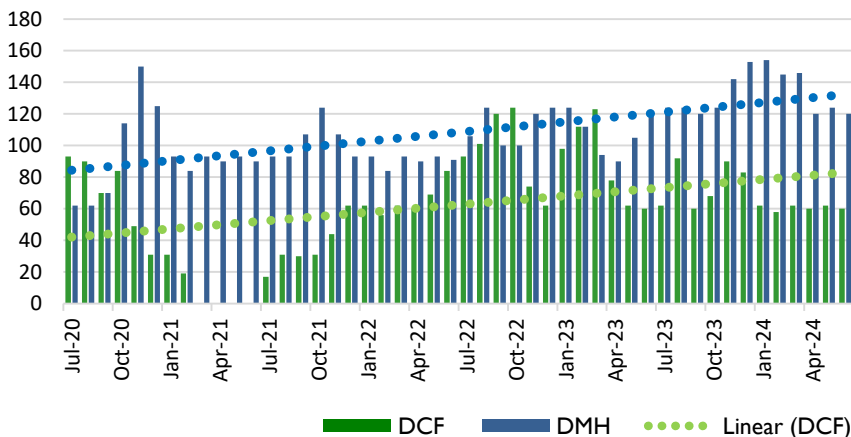
# REGION SPECIFIC DATA

The following two regional charts represent the primary placing department. If a child changed custody status within a fiscal year (i. e. child in DCF custody returned to parent's custody but remained in the residential program), the child is counted under both Departments in the Total Child Count chart; the actual bed days are attributed to the respective department in Total Residential Bed Days.

DAIL places a very small number of children in residential facilities. Data is provided statewide only to eliminate the possibility of identification of individuals/families and potential HIPAA violation. The DA's DS program would have information specific to your region.

**St. Johnsbury – 4 Year Total Bed Days**

**St. Johnsbury – Total Bed Days FY24Q4**



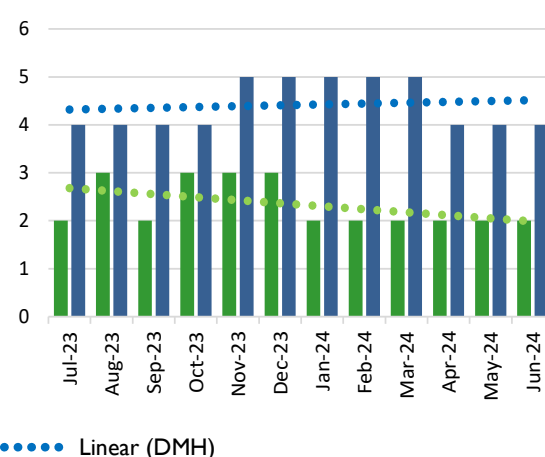
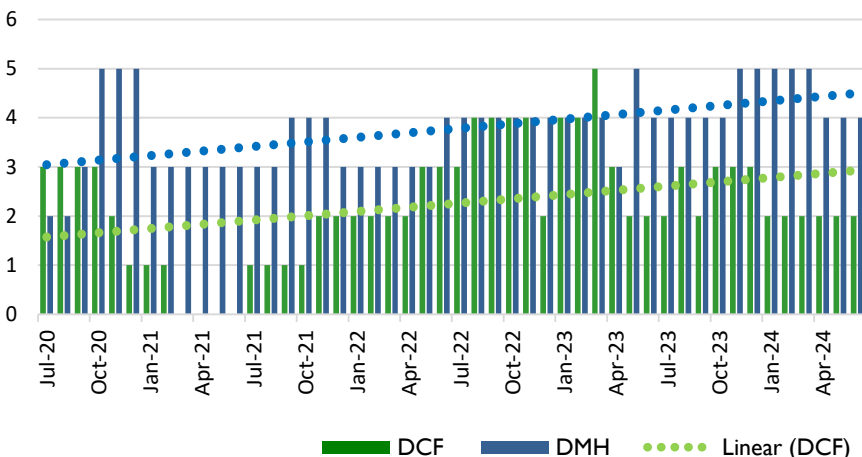
## Total Bed Days

Total Bed Days is the total number of days a child/youth stays overnight in a residential program. For the Total Bed Days chart, children who were placed in more than

one program during the fiscal year are represented more than once so that all bed days are calculated.

**St. Johnsbury – 4 Year Monthly Count**

**St. Johnsbury – Monthly Count FY24Q4**



## Count of Child/Youth

For the Monthly Child Count in Residential by State fiscal year, the number of children is unduplicated within the fiscal year, such that if a child was placed in more than one

residential program during the fiscal year, the child is only counted once.



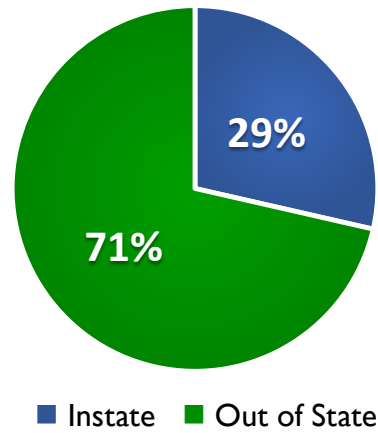


# PERCENT OF IN-STATE VERSUS OUT-OF-STATE PLACEMENTS

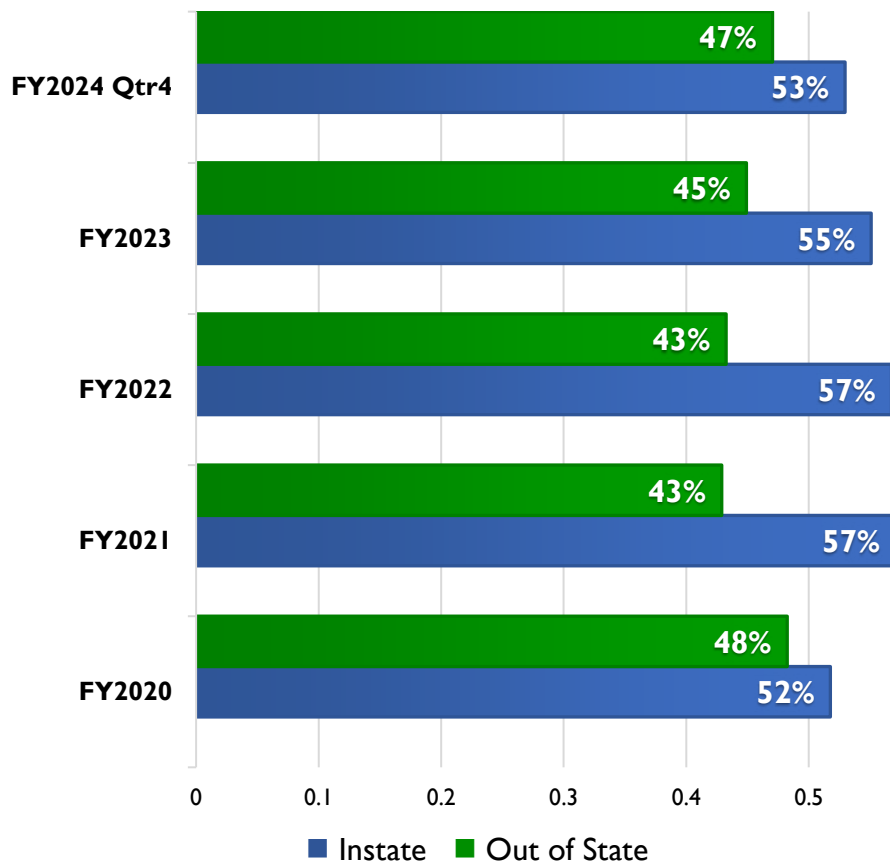
## Residential St. Johnsbury FY24 Q4

### St. Johnsbury Residential

The pie chart represents the breakdown of in-state placements compared to out-of-state placements for the fiscal year to date. If a child/youth was placed in more than one program in a fiscal year, they are represented more than once.



## Statewide Residential



### Statewide

This chart represent the breakdown of in-state placements compared to out-of-state placements by fiscal year. If a child/youth was placed in more than one program in a fiscal year, they are represented more than once.