



Vermont Certified Community Behavioral Health Clinic (CCBHC) Steering Committee

**Vermont Department of Mental Health
January 17, 2024**

Agenda

01. Welcome and Introductions

02. CCBHC Steering Committee Membership & Group Agreements

03. CCBHC Needs Assessment Overview

04. Discussion Re: Needs Assessments

05. Public Comments and Wrap Up



A photograph of three blue paper cutouts of human figures holding hands in a line. The cutouts are positioned on a light-colored surface, and their shadows are cast onto the surface below them. The background is a soft, out-of-focus light color.

Steering Committee Group Agreements

Typical Group Agreements:

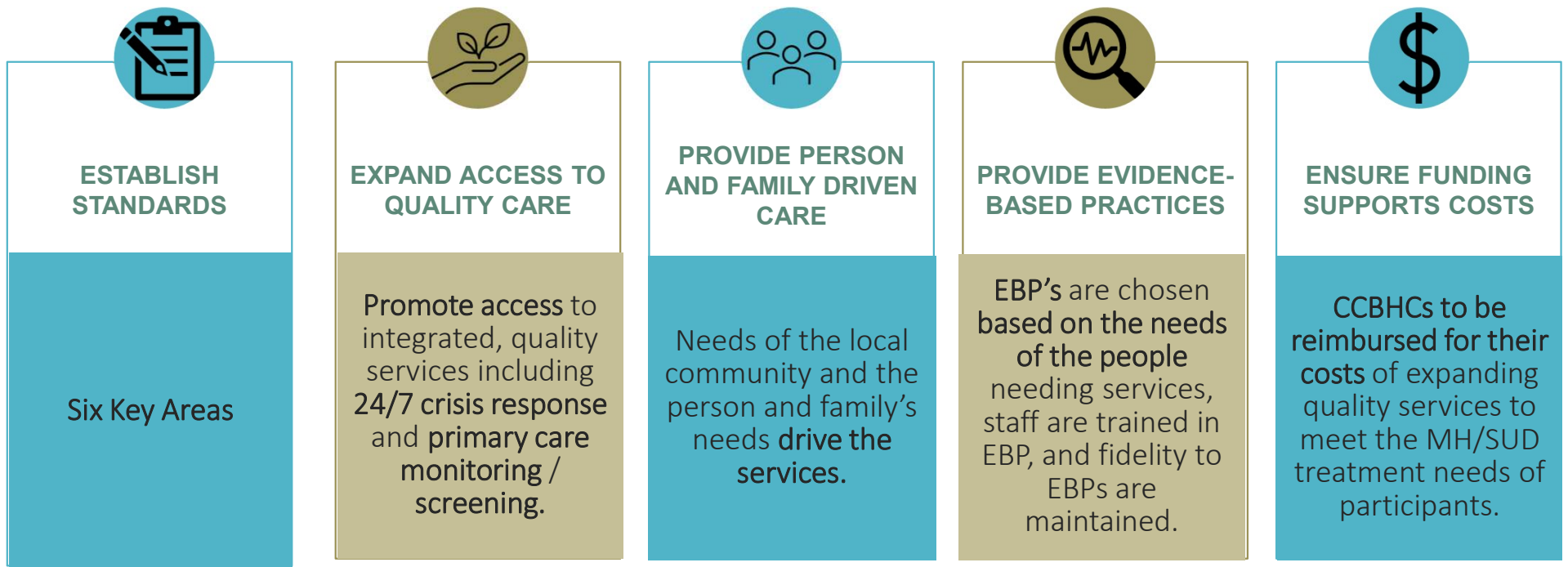
- ❖ Individuals are experts of their own experience
- ❖ Accountability with respect and support
- ❖ The impact of what you say is more important than your intent (Ouch, oops / purple flag)
- ❖ Enough Let's Move On (ELMO)
- ❖ Mind the empty chair (Who isn't represented? What would they want?)

Discussion for the group:

- ❖ What's missing?
- ❖ Does anything need to be changed or removed?

What is a CCBHC?

A CCBHC provides access to **comprehensive** and **coordinated** mental health and substance use care that is **trauma-informed**, **recovery-oriented**, and is intended to:



See the [2023 CCBHC criteria by SAMHSA](#)

CCBHCs Provide Nine Core Services Directly or Through Formal Partnerships

Crisis Services



Outpatient Mental Health & Substance Use Services

Screening, Diagnosis & Risk Assessment



Person- & Family-Centered Treatment Planning

Psychiatric Rehabilitation Services



Community-Based Mental Health Care for Veterans

Outpatient Primary Care Screening & Monitoring



Peer, Family Support & Counselor Services

Targeted Case Management



Community Needs Assessment for CCBHCs

PRESENTATION BY VERMONT DMH TO CCBHC STEERING COMMITTEE

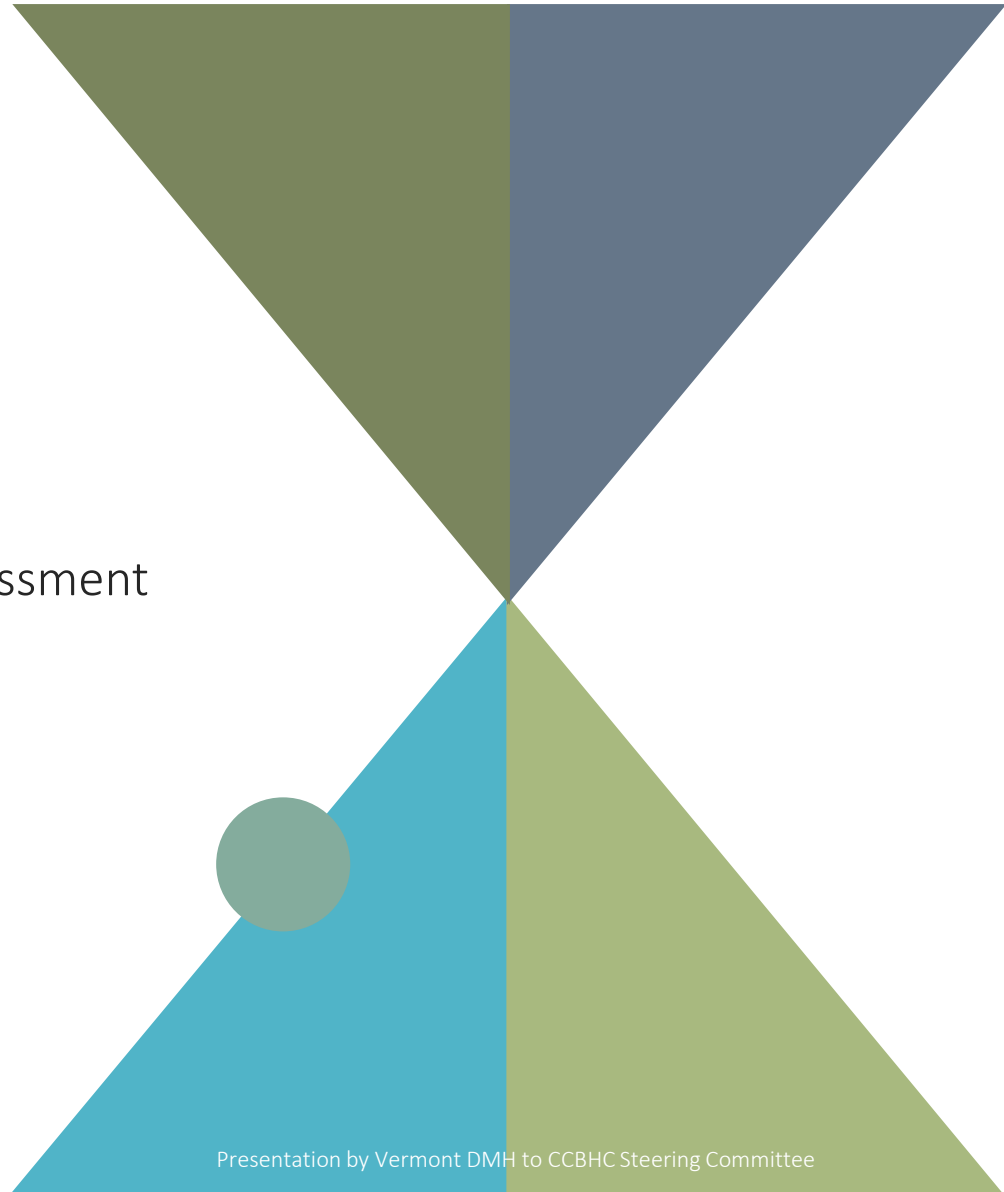
AGENDA

Introduction & Purpose of Needs Assessment

Elements of the Needs Assessment

Input Gathering

State Decisions for Certification



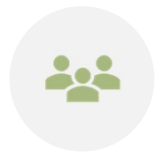
Introduction & Purpose of the Community Needs Assessment

Systematic, collaborative, and inclusive approach to:

- **Identify** treatment and recovery **needs** of all those residing in service area (*children, youth, families, older adults, & veterans*)
- Identify current conditions in community
- Determine desired outcomes
- Determine program capacity need to meet needs/outcomes.

Needs assessments ensure CCBHCs' services are well suited to the community's population.

Needs Assessment Determines:



Staffing Plan



Language and Culture



Services Offered



Location of services



Service hours



Evidence-based practices

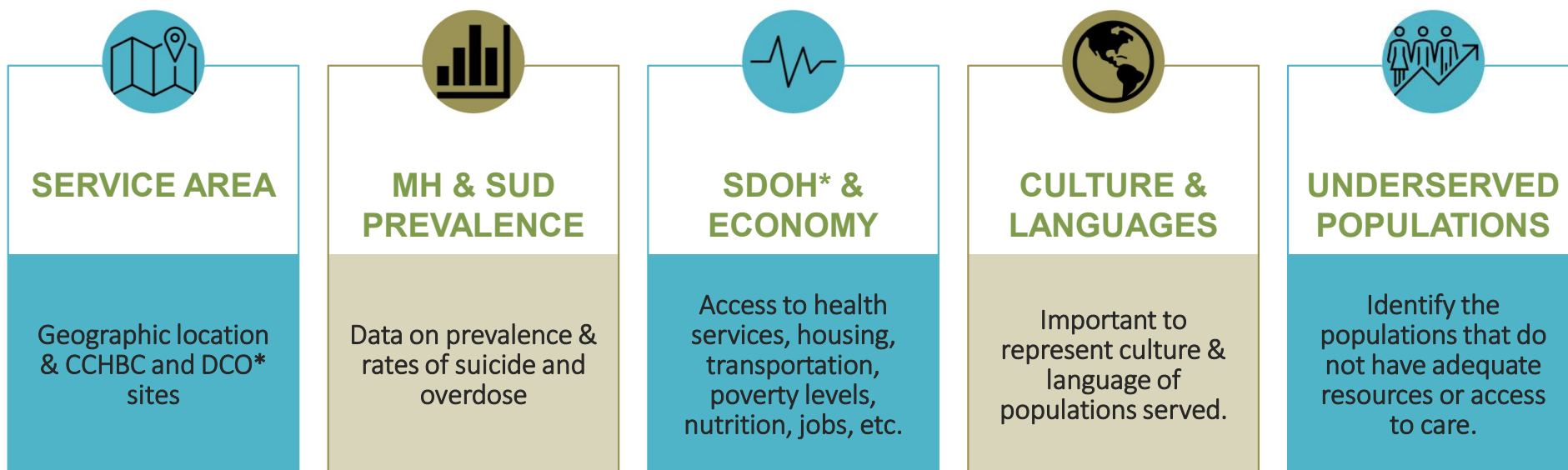


Data to collect



Outcomes / Goals

Required Elements of Needs Assessment



*Designated Collaborating Organization

*Social Drivers of Health

Additional Elements of Needs Assessment



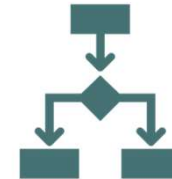
Staffing Plan That Addresses Findings

Describe how the staffing plan aligns with assessment findings.



Plan to Update Community Needs Assessment

Explain plans for regular updates to the assessment every 3 years.



Input Gathering

List the types of input required, such as cultural needs, evidence-based practices, access, and barriers to care.

Mention the entities providing input, including people with lived experience, health centers, etc.

More on Input Gathering

Input should come from the following entities if they are in the CCBHC service area:

- People with lived experience of mental and substance use conditions and individuals who have received/are receiving services from the clinic conducting the needs assessment;
- Health centers (including FQHCs in the service area);
- Local health departments (*these departments also develop community needs assessments that may be helpful*);
- Inpatient psychiatric facilities, inpatient acute care hospitals, and hospital outpatient clinics;
- One or more Department of Veterans Affairs facilities;
- Representatives from local K-12 school systems; and
- Crisis response partners such as hospital emergency departments, emergency responders, crisis stabilization settings, crisis call centers and warmlines.

AndMore on Input Gathering

CCBHCs must engage also with other community partners, especially those who also work with people receiving services from the CCBHC and **populations that historically are not engaging with health services**, such as:

- Organizations operated by people with lived experience of mental health and substance use conditions;
- Other mental health and SUD treatment providers in the community;
- Residential programs;
- Juvenile justice agencies and facilities;
- Criminal justice agencies and facilities;
- Indian Health Service or other tribal programs such as Indian Health Service youth regional treatment centers as applicable;
- Child welfare agencies and state licensed and nationally accredited child placing agencies for therapeutic foster care service; and
- Crisis response partners such as hospital emergency departments, crisis stabilization settings, crisis call centers and warmlines.
- Specialty providers of medications for treatment of opioid and alcohol use disorders;
- Peer-run and operated service providers;
- Homeless shelters and housing agencies;
- Employment services systems;
- Services for older adults, such as Area Agencies on Aging;
- Aging and Disability Resource Centers; and
- Other social and human services (e.g., domestic violence centers, pastoral services, grief counseling, Affordable Care Act navigators, food and transportation programs).



State Certification Requirements

State Decides:

- Frequency of CCBHC Needs Assessment
- How to Conduct Needs Assessment





Based on Needs Assessment the State Can Require:

Which staff disciplines to include

What additional community partnerships to ensure

What additional aspects of person and family-centered treatment planning to include

What EBPs to offer

What additional EBPs or services under psychiatric rehabilitation services

Expansion of targeted case management services to other specific populations

Scope of peer and family services to include

Governance of CCBHC – is it truly representative and is approach okay?



Group Discussion on Needs Assessment Activities

What questions do you have?

What activities or partner outreach
might be overlooked?

Recommendations/suggestions on
how local CCBHCs can learn about
their communities' needs?

