

## Vermont Mental Health Performance Indicator Project

Vermont Agency of Human Services, Department of Mental Health  
280 State Drive NOB 2 North, Waterbury, Vermont 05671

TO: Vermont Mental Health Performance Indicator Project  
Advisory Group and Interested Parties

FROM: Sheila Leno

DATE: January 4, 2022

RE: Employment of CRT Clients: Third Quarters (Jan-Mar) of FY2012-FY2021

This week's PIP provides third quarter employment rates (January through March) of ten fiscal years, FY2012 through FY2021, for clients served by Vermont's Community Rehabilitation and Treatment (CRT) programs for adults with serious mental illness. Previous reports in this series are available online at:  
<http://mentalhealth.vermont.gov/reports-forms-and-manuals/reports/statistical-reports-and-data>.

Like previous reports in this series, this report is based on analysis of data submitted to the Vermont Department of Mental Health (DMH) by the ten designated agencies, one Specialized Services Agency (SSA), and data obtained from the Vermont Department of Labor (DOL). More detail regarding DOL employment data are provided in each of the attached tables.

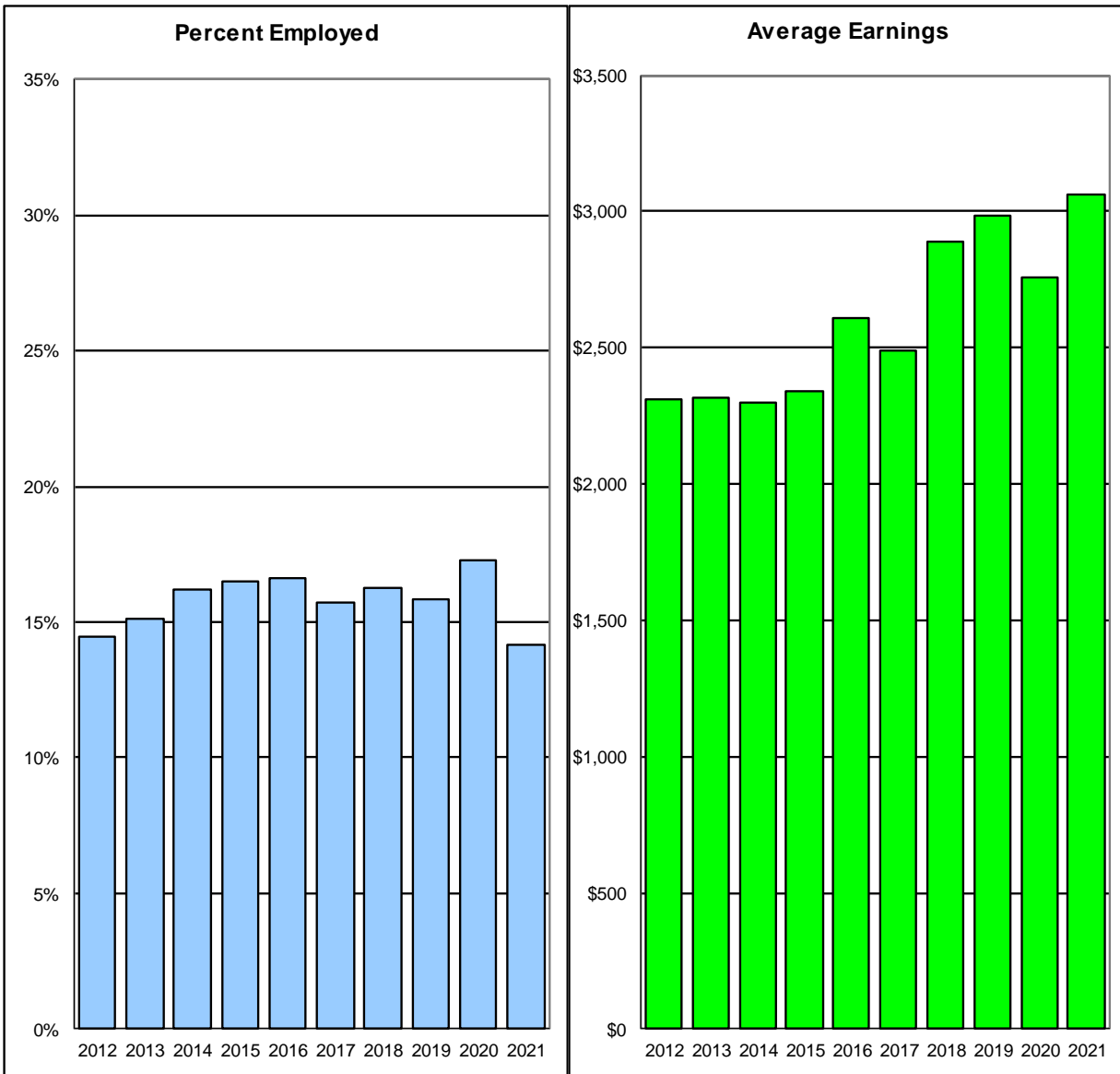
During the years covered by this report, statewide third quarter employment rates of CRT clients varied from a low of 14.4% in FY2012 to a high of 17.3% in FY2020, then back down to 14.1% in FY2021. During the third quarter of FY2021, Northwest (NCSS) and Addison (CSAC) had the highest employment rates (24.8% and 18.8%, respectively), followed by Washington (WCMH) with 17.7%. The lowest employment rates during the third quarter of FY2021 were in Pathways (PATH) with 4.8% and Southeast (HCRS) with 8.1%.

Statewide, the average third quarter earnings of employed CRT clients during the third quarter of FY2021 was \$3,063. Lamoille (LCMH) had the highest FY2021 third quarter earnings per employed client (\$3,851), followed by Northwest (NCSS; \$3,819) and Rutland (RCMH; \$3,782). The lowest FY2021 third quarter earnings were in Pathways (PATH; \$1,354) and Bennington (UCS; \$2,253).

We look forward to your comments and your suggestions for further analyses of these data. As always, you can reach us by e-mail at [ahs.dmhip@vermont.gov](mailto:ahs.dmhip@vermont.gov).

## Statewide CRT Employment Rates and Average Earnings

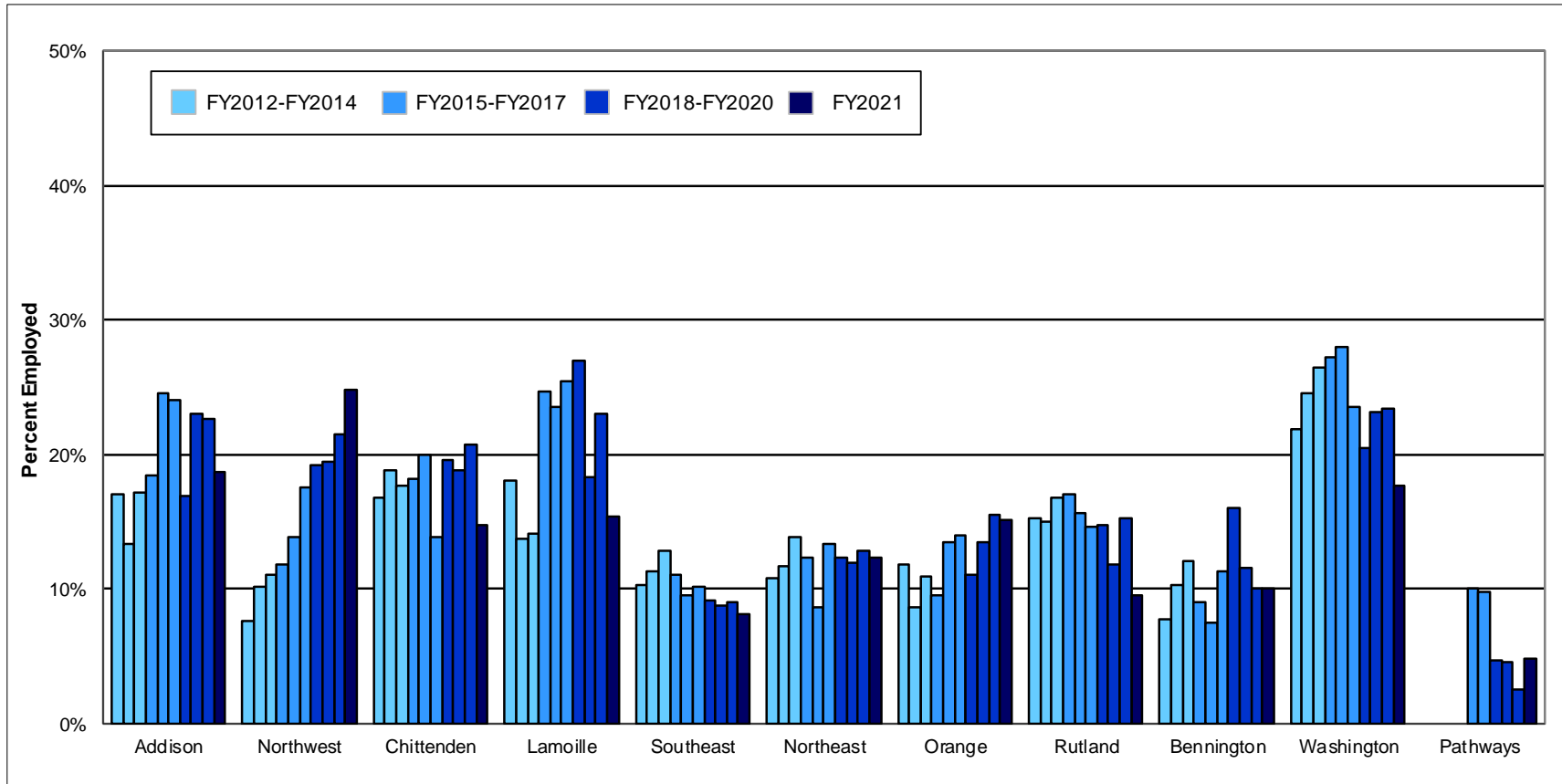
### Third Quarter (Jan-Mar) of Fiscal Years 2012 - 2021



	Third Quarter of Fiscal Year									
	<u>2012</u>	<u>2013</u>	<u>2014</u>	<u>2015</u>	<u>2016</u>	<u>2017</u>	<u>2018</u>	<u>2019</u>	<u>2020</u>	<u>2021</u>
<b>% Employed</b>	14.4%	15.1%	16.2%	16.5%	16.6%	15.7%	16.3%	15.9%	17.3%	14.1%
<b>\$ / Employed Client</b>	\$2,308	\$2,318	\$2,301	\$2,338	\$2,611	\$2,488	\$2,887	\$2,987	\$2,757	\$3,063

This report is based on analysis of the Vermont Department of Mental Health (DMH) and Department of Labor (DOL) databases, and includes individuals served by Community and Rehabilitation Treatment (CRT) programs for adults with serious mental illness. DMH client data are submitted by Community Programs in conformance with contractual requirements. DOL data are submitted by employers in conformance with state and federal laws. Workers who are excluded from DOL reporting are the self-employed, firm owners not incorporated and the following employee groups: elected officials, employees of nonprofit religious, charitable and educational organizations, unpaid family members, farm workers (with some exceptions), railroad employees, and individuals employed in neighboring states. Analysis includes all employment reported for CRT clients aged 18-64 who were active during each reporting quarter. Quarterly employment rates are lower than annual employment rates because not all clients who are employed during a year are employed during every quarter of the year.

## Percent of CRT Clients Employed Third Quarter (Jan-Mar) of Fiscal Years 2012 - 2021



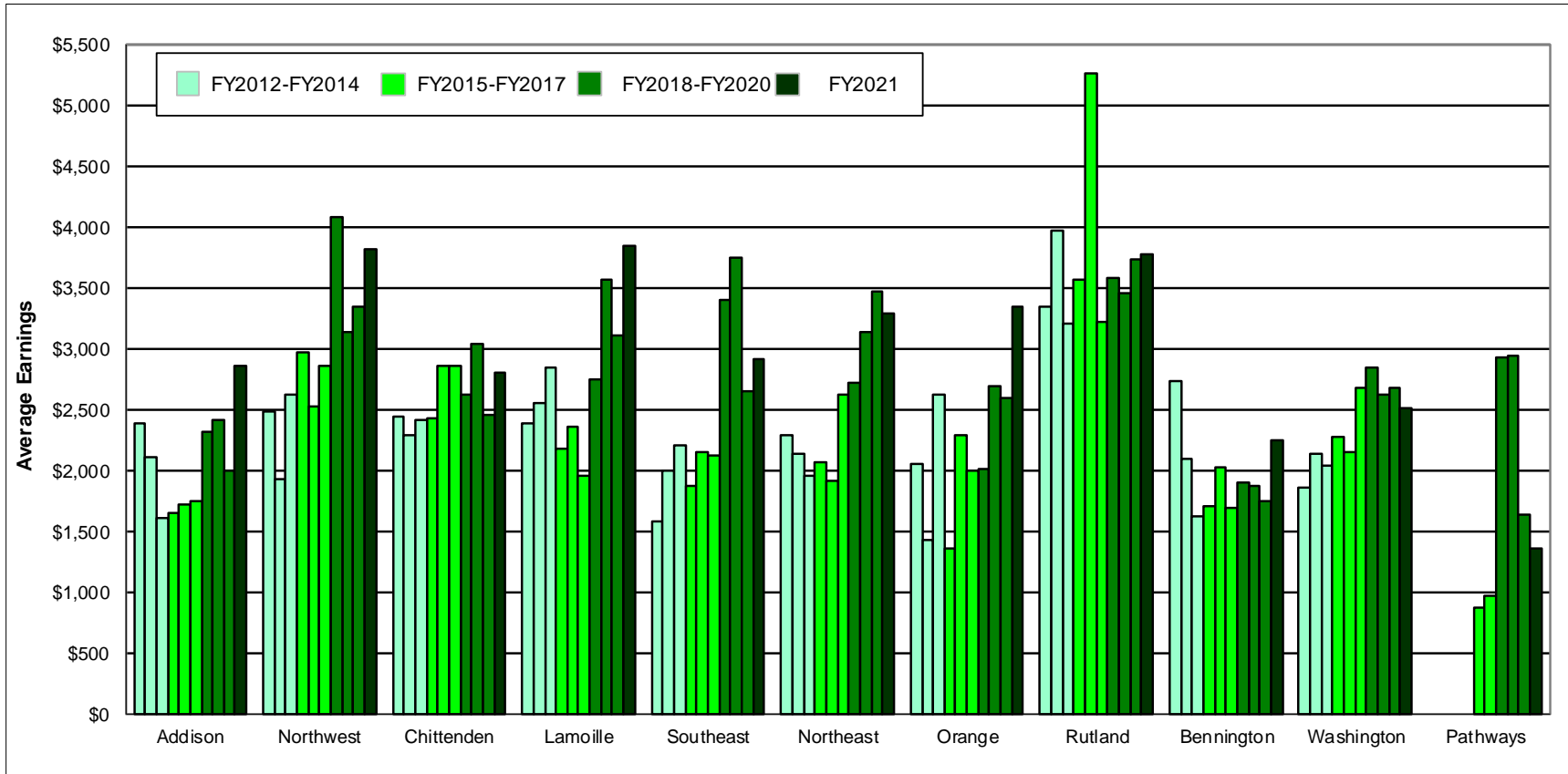
This report is based on analysis of the Vermont Department of Mental Health (DMH) and Department of Labor (DOL) databases, and includes individuals served by Community and Rehabilitation Treatment (CRT) programs for adults with serious mental illness. DMH client data are submitted by Community Programs in conformance with contractual requirements. DOL data are submitted by employers in conformance with state and federal laws. Workers who are excluded from DOL reporting are the self-employed, firm owners not incorporated and the following employee groups: elected officials, employees of nonprofit religious, charitable and educational organizations, unpaid family members, farm workers (with some exceptions), railroad employees, and individuals employed in neighboring states. Analysis includes all employment reported for CRT clients aged 18-64 who were active during each reporting quarter. Quarterly employment rates are lower than annual employment rates because not all clients who are employed during a year are employed during every quarter of the year.

**Total CRT Clients Served (#) and Percent Employed (%)**  
**Third Quarter (Jan-Mar) of Fiscal Years 2012 - 2021**

Year	Region																		Total %				
	Addison		Northwest		Chittenden		Lamoille		Southeast		Northeast		Orange		Rutland		Bennington			Washington		Pathways	
	#	%	#	%	#	%	#	%	#	%	#	%	#	%	#	%	#	%	#	%	#	%	
FY21	112	18.8	161	24.8	435	14.7	91	15.4	296	8.1	154	12.3	112	15.2	168	9.5	109	10.1	265	17.7	42	4.8	14.1
FY20	119	22.7	167	21.6	463	20.7	100	23.0	308	9.1	171	12.9	116	15.5	183	15.3	109	10.1	273	23.4	40	2.5	17.3
FY19	117	23.1	174	19.5	494	18.8	104	18.3	331	8.8	192	12.0	119	13.4	195	11.8	112	11.6	268	23.1	44	4.5	15.9
FY18	130	16.9	172	19.2	496	19.6	111	27.0	318	9.1	186	12.4	126	11.1	210	14.8	106	16.0	254	20.5	43	4.7	16.3
FY17	137	24.1	176	17.6	496	13.9	98	25.5	326	10.1	202	13.4	136	14.0	199	14.6	106	11.3	255	23.5	41	9.8	15.7
FY16	138	24.6	180	13.9	519	20.0	102	23.5	327	9.5	209	8.6	126	13.5	218	15.6	121	7.4	261	28.0	40	10.0	16.6
FY15	135	18.5	186	11.8	545	18.2	105	24.8	307	11.1	194	12.4	125	9.6	211	17.1	121	9.1	271	27.3			16.5
FY14	146	17.1	190	11.1	558	17.7	99	14.1	334	12.9	201	13.9	128	10.9	203	16.7	133	12.0	283	26.5			16.2
FY13	149	13.4	196	10.2	557	18.9	102	13.7	346	11.3	214	11.7	127	8.7	220	15.0	126	10.3	297	24.6			15.1
FY12	152	17.1	196	7.7	560	16.8	116	18.1	338	10.4	231	10.8	135	11.9	235	15.3	129	7.8	325	21.8			14.4

This report is based on analysis of the Vermont Department of Mental Health (DMH) and Department of Labor (DOL) databases, and includes individuals served by Community and Rehabilitation Treatment (CRT) programs for adults with serious mental illness. DMH client data are submitted by Community Programs in conformance with contractual requirements. DOL data are submitted by employers in conformance with state and federal laws. Workers who are excluded from DOL reporting are the self-employed, firm owners not incorporated and the following employee groups: elected officials, employees of nonprofit religious, charitable and educational organizations, unpaid family members, farm workers (with some exceptions), railroad employees, and individuals employed in neighboring states. Analysis includes all employment reported for CRT clients aged 18-64 who were active during each reporting quarter. Quarterly employment rates are lower than annual employment rates because not all clients who are employed during a year are employed during every quarter of the year.

## Average Earnings for Employed CRT Clients Third Quarter (Jan-Mar) of Fiscal Years 2012 - 2021



This report is based on analysis of the Vermont Department of Mental Health (DMH) and Department of Labor (DOL) databases, and includes individuals served by Community and Rehabilitation Treatment (CRT) programs for adults with serious mental illness. DMH client data are submitted by Community Programs in conformance with contractual requirements. DOL data are submitted by employers in conformance with state and federal laws. Workers who are excluded from DOL reporting are the self-employed, firm owners not incorporated and the following employee groups: elected officials, employees of nonprofit religious, charitable and educational organizations, unpaid family members, farm workers (with some exceptions), railroad employees, and individuals employed in neighboring states. Analysis includes all employment reported for CRT clients aged 18-64 who were active during each reporting quarter. Quarterly employment rates are lower than annual employment rates because not all clients who are employed during a year are employed during every quarter of the year.

**CRT Clients Employed (#) and Average Earnings for Employed Clients (\$)**  
**Third Quarter (Jan-Mar) of Fiscal Years 2012 - 2021**

Year	Region																		Total \$				
	Addison		Northwest		Chittenden		Lamoille		Southeast		Northeast		Orange		Rutland		Bennington			Washington		Pathways	
	#	\$	#	\$	#	\$	#	\$	#	\$	#	\$	#	\$	#	\$	#	\$	#	\$	#	\$	
FY21	21	2,859	40	3,819	64	2,812	14	3,851	24	2,921	19	3,297	17	3,344	16	3,782	11	2,253	47	2,511	2	1,354	3,063
FY20	27	1,998	36	3,347	96	2,452	23	3,109	28	2,658	22	3,471	18	2,595	28	3,740	11	1,750	64	2,681	1	1,634	2,757
FY19	27	2,417	34	3,136	93	3,042	19	3,564	29	3,746	23	3,144	16	2,700	23	3,453	13	1,877	62	2,619	2	2,938	2,987
FY18	22	2,326	33	4,087	97	2,623	30	2,753	29	3,405	23	2,724	14	2,012	31	3,590	17	1,900	52	2,853	2	2,925	2,887
FY17	33	1,755	31	2,857	69	2,866	25	1,963	33	2,130	27	2,627	19	2,003	29	3,220	12	1,700	60	2,680	4	971	2,488
FY16	34	1,725	25	2,529	104	2,858	24	2,355	31	2,151	18	1,916	17	2,294	34	5,273	9	2,031	73	2,152	4	868	2,611
FY15	25	1,658	22	2,974	99	2,425	26	2,180	34	1,879	24	2,066	12	1,363	36	3,565	11	1,701	74	2,273			2,338
FY14	25	1,609	21	2,627	99	2,416	14	2,848	43	2,210	28	1,954	14	2,630	34	3,215	16	1,620	75	2,036			2,301
FY13	20	2,106	20	1,928	105	2,285	14	2,558	39	2,000	25	2,133	11	1,428	33	3,973	13	2,100	73	2,142			2,318
FY12	26	2,392	15	2,487	94	2,449	21	2,392	35	1,577	25	2,295	16	2,051	36	3,353	10	2,731	71	1,863			2,308

This report is based on analysis of the Vermont Department of Mental Health (DMH) and Department of Labor (DOL) databases, and includes individuals served by Community and Rehabilitation Treatment (CRT) programs for adults with serious mental illness. DMH client data are submitted by Community Programs in conformance with contractual requirements. DOL data are submitted by employers in conformance with state and federal laws. Workers who are excluded from DOL reporting are the self-employed, firm owners not incorporated and the following employee groups: elected officials, employees of nonprofit religious, charitable and educational organizations, unpaid family members, farm workers (with some exceptions), railroad employees, and individuals employed in neighboring states. Analysis includes all employment reported for CRT clients aged 18-64 who were active during each reporting quarter. Quarterly employment rates are lower than annual employment rates because not all clients who are employed during a year are employed during every quarter of the year.

## Third Quarter FY2021 Employment in Vermont of Community Rehabilitation and Treatment Clients (January-March 2021)

Region	Total	Employment		Wages Reported	
	Number Served	Number Employed	Percent Employed	Total Wages	Wages per Employed Client
Addison	112	21	18.8%	\$60,034	\$2,859
Northwest	161	40	24.8%	\$152,764	\$3,819
Chittenden	435	64	14.7%	\$179,995	\$2,812
Lamoille	91	14	15.4%	\$53,908	\$3,851
Southeast	296	24	8.1%	\$70,094	\$2,921
Northeast	154	19	12.3%	\$62,639	\$3,297
Orange	112	17	15.2%	\$56,846	\$3,344
Rutland	168	16	9.5%	\$60,509	\$3,782
Bennington	109	11	10.1%	\$24,778	\$2,253
Washington	265	47	17.7%	\$118,008	\$2,511
Pathways	42	2	4.8%	\$2,708	\$1,354
Quarterly Total	1,945	275	14.1%	\$842,284	\$3,063

This report is based on analysis of the Vermont Department of Mental Health (DMH) and Department of Labor (DOL) databases, and includes individuals served by Community and Rehabilitation Treatment (CRT) programs for adults with serious mental illness. DMH client data are submitted by Community Programs in conformance with contractual requirements. DOL data are submitted by employers in conformance with state and federal laws. Workers who are excluded from DOL reporting are the self-employed, firm owners not incorporated and the following employee groups: elected officials, employees of nonprofit religious, charitable and educational organizations, unpaid family members, farm workers (with some exceptions), railroad employees, and individuals employed in neighboring states. Analysis includes all employment reported for CRT clients aged 18-64 who were active during each reporting quarter. Quarterly employment rates are lower than annual employment rates because not all clients who are employed during a year are employed during every quarter of the year.