

Vermont Mental Health Performance Indicator Project

Vermont Agency of Human Services, Department of Mental Health
280 State Drive NOB 2 North, Waterbury, Vermont 05671

TO: Vermont Mental Health Performance Indicator Project
Advisory Group and Interested Parties

FROM: Sheila Leno

DATE: April 23, 2020

RE: Employment and Earnings of CRT Clients: 2nd Quarter of FY2011-2020

This week's PIP provides quarterly regional employment rates and average earnings of adults with serious mental illness served by Vermont's Community Rehabilitation and Treatment (CRT) programs. Employment rates and average earnings are presented for the second quarter (October-December) for each of ten fiscal years, FY2011 through FY2020.

This report, like previous reports in this series, is based on analysis of data obtained from Vermont Department of Mental Health (DMH) designated agencies and data obtained from the Vermont Department of Labor (DOL). These reports include all employment reported to DOL by Vermont employers.

As you will see, statewide CRT second quarter employment rates had increased from 15.1% in FY2011, to a high of 18.4% in FY2020. (Page 2)

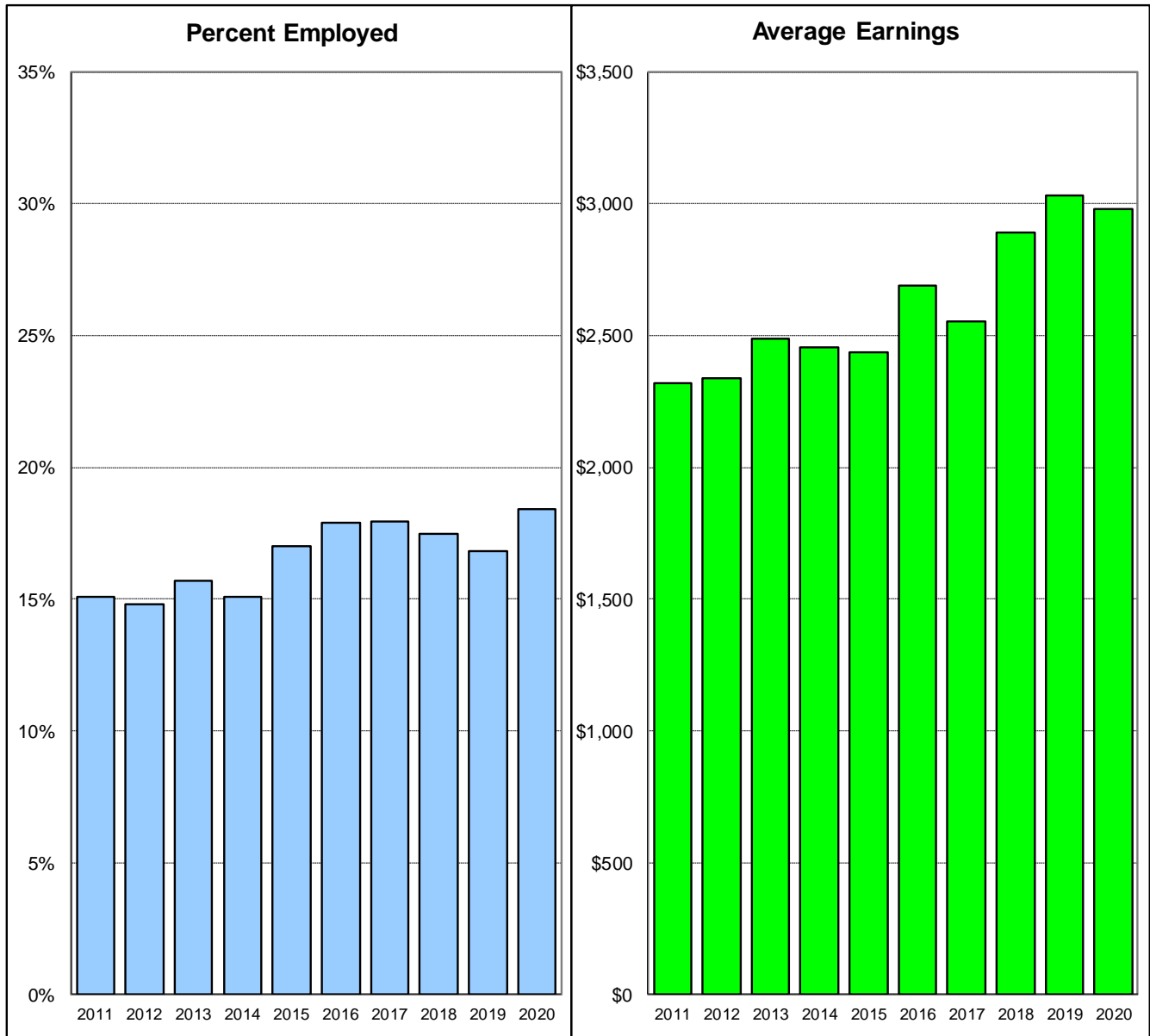
During the second quarter of FY2020, Washington had the highest employment rate, with 25.1% of CRT clients employed. The lowest second quarter CRT employment rates were in Pathways (2.4%) and Bennington region (10.1%). Compared to the previous year, employment rates for the second quarter of FY2020 increased in seven of eleven regions. The largest increase was in Northeast (11.3% to 14.4%) and the Southeast region (9.3% to 11.7%). Compared to the previous year, employment rates for the second quarter of FY2020 decreased in the Pathways region from 7.3% to 2.4%. (Page 4)

Average second quarter earnings of employed CRT clients decreased from \$3,032 in FY2019 to \$2,979 in FY2020. (Page 2)

Average earnings of employed CRT clients during the second quarter of FY2019, were highest in the Pathways, with earnings of \$4,826 per employed CRT client, followed by Rutland (\$4,142) and the Lamoille region (\$3,937). The lowest earnings per employed client were in Bennington (\$2,291) and the Chittenden region (\$2,642). (Page 6)

We look forward to your comments and your suggestions for further analyses of these data. As always, you can reach us by e-mail at ahs.dmhpip@vermont.gov.

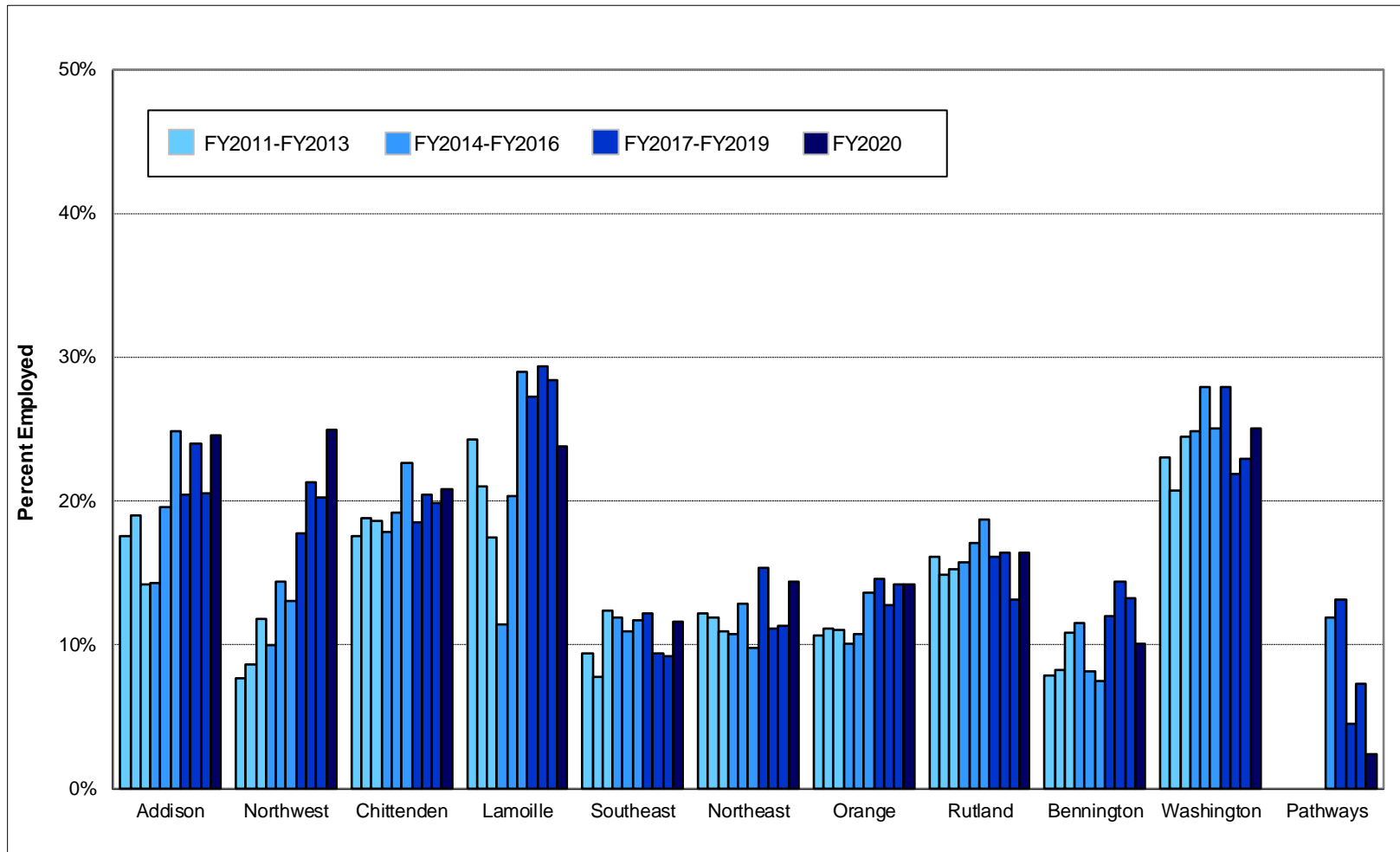
Statewide CRT Employment Rates and Average Earnings Second Quarter of Each Fiscal Year 2011 - 2020



	Second Quarter of Fiscal Year									
	<u>2011</u>	<u>2012</u>	<u>2013</u>	<u>2014</u>	<u>2015</u>	<u>2016</u>	<u>2017</u>	<u>2018</u>	<u>2019</u>	<u>2020</u>
% Employed	15.1%	14.8%	15.7%	15.1%	17.0%	17.9%	18.0%	17.5%	16.8%	18.4%
\$ / Employed Client	\$2,318	\$2,340	\$2,486	\$2,456	\$2,437	\$2,691	\$2,552	\$2,889	\$3,032	\$2,979

This report is based on record linkage of the DMH CRT and DOL databases. DMH client data are submitted by Community Programs in conformance with contractual requirements. DOL data are submitted by employers in conformance with state and federal laws. Workers who are excluded from DOL reporting are the self-employed, firm owners not incorporated and the following employee groups: elected officials, employees of nonprofit religious, charitable and educational organizations, unpaid family members, farm workers (with some exceptions), railroad employees, and individuals who work out of state. Analysis includes all employment reported for each quarter for active Community Rehabilitation and Treatment clients aged 18 - 64. Quarterly employment rates are lower than annual employment rates because not all clients who are employed during a year are employed during every quarter of the year.

Percent of CRT Clients Employed Second Quarter of Each Fiscal Year 2011 - 2020



This report is based on record linkage of the DMH CRT and DOL databases. DMH client data are submitted by Community Programs in conformance with contractual requirements. DOL data are submitted by employers in conformance with state and federal laws. Workers who are excluded from DOL reporting are the self-employed, firm owners not incorporated and the following employee groups: elected officials, employees of nonprofit religious, charitable and educational organizations, unpaid family members, farm workers (with some exceptions), railroad employees, and individuals who work out of state. Analysis includes all employment reported for each quarter for active Community Rehabilitation and Treatment clients aged 18 - 64. Quarterly employment rates are lower than annual employment rates because not all clients who are employed during a year are employed during every quarter of the year.

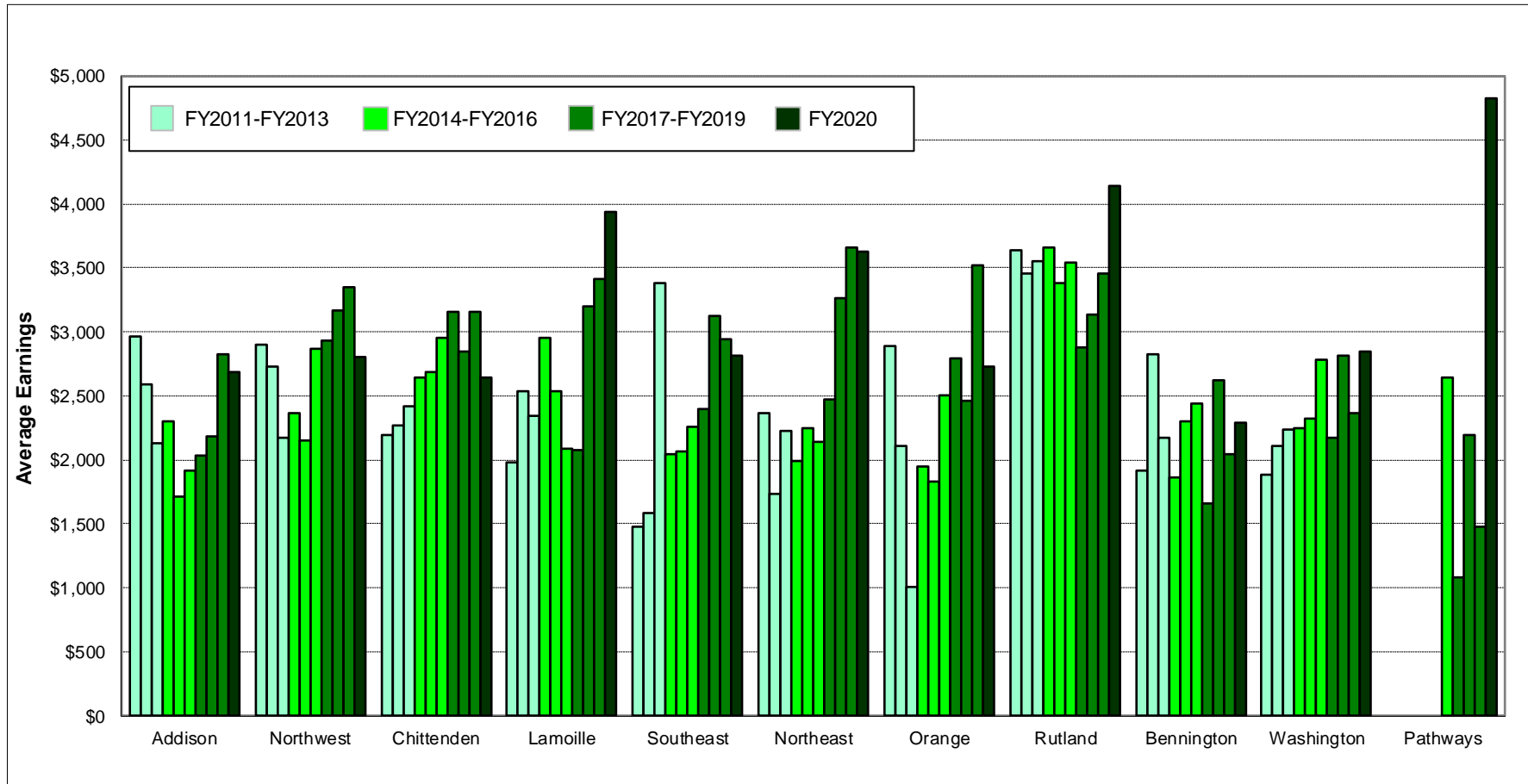
CRT Clients Served (#) and Percent Employed (%)

Second Quarter of Each Fiscal Year 2011 - 2020

Year	Region																		Statewide					
	Addison		Northwest		Chittenden		Lamoille		Southeast		Northeast		Orange		Rutland		Bennington		Washington		Pathways		#	%
	#	%	#	%	#	%	#	%	#	%	#	%	#	%	#	%	#	%	#	%	#	%	#	%
FY20	118	24.6	164	25.0	462	20.8	101	23.8	309	11.7	174	14.4	120	14.2	177	16.4	109	10.1	271	25.1	42	2.4	2,047	18.4
FY19	122	20.5	173	20.2	494	19.8	109	28.4	335	9.3	194	11.3	120	14.2	198	13.1	113	13.3	266	22.9	41	7.3	2,165	16.8
FY18	129	24.0	169	21.3	503	20.5	109	29.4	309	9.4	188	11.2	125	12.8	201	16.4	111	14.4	256	21.9	44	4.5	2,144	17.5
FY17	137	20.4	175	17.7	486	18.5	99	27.3	320	12.2	208	15.4	137	14.6	205	16.1	108	12.0	254	28.0	38	13.2	2,167	18.0
FY16	133	24.8	184	13.0	520	22.7	100	29.0	325	11.7	205	9.8	125	13.6	219	18.7	121	7.4	263	25.1	42	11.9	2,237	17.9
FY15	138	19.6	187	14.4	542	19.2	108	20.4	302	10.9	194	12.9	121	10.7	211	17.1	122	8.2	272	27.9			2,197	17.0
FY14	147	14.3	190	10.0	561	17.8	96	11.5	344	11.9	204	10.8	129	10.1	203	15.8	130	11.5	286	24.8			2,290	15.1
FY13	148	14.2	195	11.8	554	18.6	109	17.4	347	12.4	210	11.0	136	11.0	223	15.2	129	10.9	298	24.5			2,349	15.7
FY12	153	19.0	196	8.7	563	18.8	119	21.0	336	7.7	235	11.9	135	11.1	235	14.9	133	8.3	328	20.7			2,433	14.8
FY11	165	17.6	196	7.7	574	17.6	111	24.3	339	9.4	271	12.2	131	10.7	230	16.1	139	7.9	334	23.1			2,490	15.1

This report is based on record linkage of the DMH CRT and DOL databases. DMH client data are submitted by Community Programs in conformance with contractual requirements. DOL data are submitted by employers in conformance with state and federal laws. Workers who are excluded from DOL reporting are the self-employed, firm owners not incorporated and the following employee groups: elected officials, employees of nonprofit religious, charitable and educational organizations, unpaid family members, farm workers (with some exceptions), railroad employees, and individuals who work out of state. Analysis includes all employment reported for each quarter for active Community Rehabilitation and Treatment clients aged 18 - 64. Quarterly employment rates are lower than annual employment rates because not all clients who are employed during a year are employed during every quarter of the year.

Average Earnings for Employed CRT Clients Second Quarter of Each Fiscal Year 2011 - 2020



This report is based on record linkage of the DMH CRT and DOL databases. DMH client data are submitted by Community Programs in conformance with contractual requirements. DOL data are submitted by employers in conformance with state and federal laws. Workers who are excluded from DOL reporting are the self-employed, firm owners not incorporated and the following employee groups: elected officials, employees of nonprofit religious, charitable and educational organizations, unpaid family members, farm workers (with some exceptions), railroad employees, and individuals who work out of state. Analysis includes all employment reported for each quarter for active Community Rehabilitation and Treatment clients aged 18 - 64. Quarterly employment rates are lower than annual employment rates because not all clients who are employed during a year are employed during every quarter of the year.

CRT Clients Employed (#) and Average Earnings for Employed Clients (\$)
Second Quarter of Each Fiscal Year 2011 - 2020

Year	Region																Statewide							
	Addison		Northwest		Chittenden		Lamoille		Southeast		Northeast		Orange		Rutland		Bennington		Washington		Pathways		#	\$
	#	\$	#	\$	#	\$	#	\$	#	\$	#	\$	#	\$	#	\$	#	\$	#	\$				
FY20	29	\$2,690	41	\$2,809	96	\$2,643	24	\$3,937	36	\$2,813	25	\$3,626	17	\$2,728	29	\$4,142	11	\$2,291	68	\$2,843	1	\$4,826	377	\$2,979
FY19	25	\$2,826	35	\$3,352	98	\$3,154	31	\$3,410	31	\$2,939	22	\$3,658	17	\$3,525	26	\$3,459	15	\$2,048	61	\$2,364	3	\$1,482	364	\$3,032
FY18	31	\$2,188	36	\$3,168	103	\$2,847	32	\$3,199	29	\$3,124	21	\$3,265	16	\$2,465	33	\$3,135	16	\$2,624	56	\$2,812	2	\$2,198	375	\$2,889
FY17	28	\$2,035	31	\$2,938	90	\$3,154	27	\$2,080	39	\$2,395	32	\$2,471	20	\$2,791	33	\$2,877	13	\$1,660	71	\$2,172	5	\$1,087	389	\$2,552
FY16	33	\$1,920	24	\$2,865	118	\$2,951	29	\$2,087	38	\$2,260	20	\$2,140	17	\$2,502	41	\$3,546	9	\$2,438	66	\$2,783	5	\$2,639	400	\$2,691
FY15	27	\$1,718	27	\$2,156	104	\$2,682	22	\$2,537	33	\$2,068	25	\$2,245	13	\$1,835	36	\$3,385	10	\$2,304	76	\$2,323			373	\$2,437
FY14	21	\$2,301	19	\$2,368	100	\$2,640	11	\$2,956	41	\$2,048	22	\$1,987	13	\$1,948	32	\$3,661	15	\$1,859	71	\$2,244			345	\$2,456
FY13	21	\$2,130	23	\$2,178	103	\$2,416	19	\$2,348	43	\$3,386	23	\$2,230	15	\$1,012	34	\$3,552	14	\$2,173	73	\$2,236			368	\$2,486
FY12	29	\$2,589	17	\$2,730	106	\$2,269	25	\$2,538	26	\$1,587	28	\$1,731	15	\$2,114	35	\$3,458	11	\$2,831	68	\$2,106			360	\$2,340
FY11	29	\$2,968	15	\$2,899	101	\$2,195	27	\$1,982	32	\$1,475	33	\$2,370	14	\$2,894	37	\$3,638	11	\$1,914	77	\$1,885			376	\$2,318

This report is based on record linkage of the DMH CRT and DOL databases. DMH client data are submitted by Community Programs in conformance with contractual requirements. DOL data are submitted by employers in conformance with state and federal laws. Workers who are excluded from DOL reporting are the self-employed, firm owners not incorporated and the following employee groups: elected officials, employees of nonprofit religious, charitable and educational organizations, unpaid family members, farm workers (with some exceptions), railroad employees, and individuals who work out of state. Analysis includes all employment reported for each quarter for active Community Rehabilitation and Treatment clients aged 18 - 64. Quarterly employment rates are lower than annual employment rates because not all clients who are employed during a year are employed during every quarter of the year.

**Quarter 2 Fiscal Year 2020 Employment
of Community Rehabilitation and Treatment Clients
In Vermont**

Clinic	Total Number Served	Employment		Wages Reported	
		Number Employed	Percent Employed	Total Wages	Wages per Employed Client
Addison - CSAC	118	29	24.6%	\$77,999	\$2,690
Northwest - NCSS	164	41	25.0%	\$115,162	\$2,809
Chittenden - HC	462	96	20.8%	\$253,754	\$2,643
Lamoille - LCMH	101	24	23.8%	\$94,489	\$3,937
Southeast - HCRS	309	36	11.7%	\$101,251	\$2,813
Northeast - NKHS	174	25	14.4%	\$90,657	\$3,626
Orange - CMC	120	17	14.2%	\$46,380	\$2,728
Rutland - RMHS	177	29	16.4%	\$120,116	\$4,142
Bennington - UCS	109	11	10.1%	\$25,202	\$2,291
Washington - WCMH	271	68	25.1%	\$193,317	\$2,843
Pathways - PATH	42	1	2.4%	\$4,826	\$4,826
Quarterly Total	2,047	377	18.4%	\$1,123,152	\$2,979

This report is based on record linkage of the Vermont DMH CRT and DOL databases. DMH client data are submitted by Community Programs in conformance with contractual requirements. DOL data are submitted by employers in conformance with state and federal laws. Workers who are excluded from DOL reporting are the self-employed, firm owners not incorporated and the following employee groups: elected officials, employees of nonprofit religious, charitable and educational organizations, unpaid family members, farm workers (with some exceptions), railroad employees, and individuals who work out of state. Analysis includes all employment reported for each quarter for active Community Rehabilitation and Treatment clients aged 18 - 64. Quarterly employment rates are lower than annual employment rates because not all clients who are employed during a year are employed during every quarter of the year.