

Vermont Mental Health Performance Indicator Project

Vermont Agency of Human Services, Department of Mental Health
280 State Drive NOB 2 North, Waterbury, Vermont 05671

TO: Vermont Mental Health Performance Indicator Project
Advisory Group and Interested Parties

FROM: Sheila Leno

DATE: April 23, 2020

RE: Employment and Earnings of CRT Clients: 2nd Quarter of FY2011-2020

This week's PIP provides quarterly regional employment rates and average earnings of adults with serious mental illness served by Vermont's Community Rehabilitation and Treatment (CRT) programs. Employment rates and average earnings are presented for the second quarter (October-December) for each of ten fiscal years, FY2011 through FY2020.

This report, like previous reports in this series, is based on analysis of data obtained from Vermont Department of Mental Health (DMH) designated agencies and data obtained from the Vermont Department of Labor (DOL). These reports include all employment reported to DOL by Vermont employers.

As you will see, statewide CRT second quarter employment rates had increased from 15.1% in FY2011, to a high of 18.4% in FY2020. (Page 2)

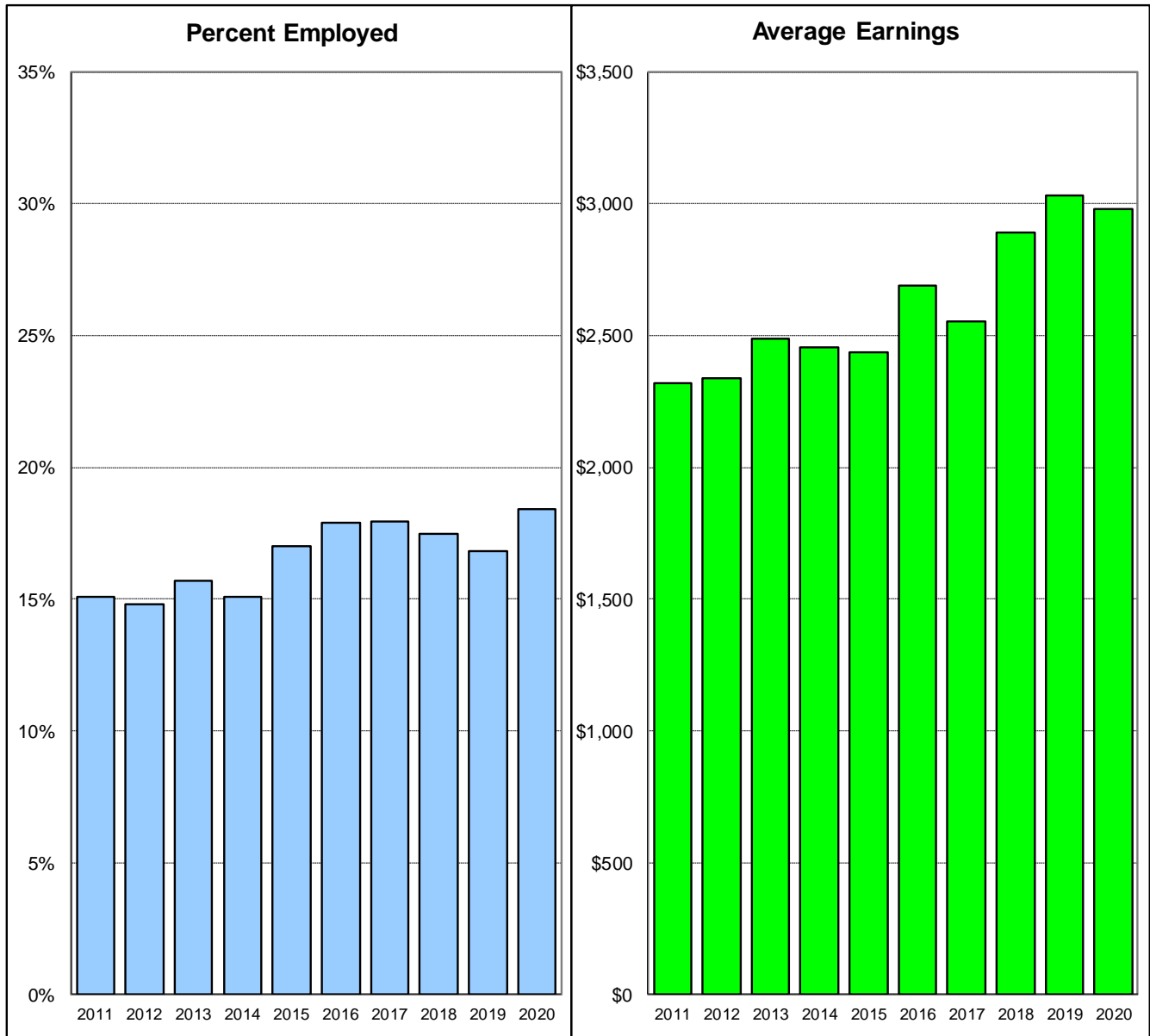
During the second quarter of FY2020, Washington had the highest employment rate, with 25.1% of CRT clients employed. The lowest second quarter CRT employment rates were in Pathways (2.4%) and Bennington region (10.1%). Compared to the previous year, employment rates for the second quarter of FY2020 increased in seven of eleven regions. The largest increase was in Northeast (11.3% to 14.4%) and the Southeast region (9.3% to 11.7%). Compared to the previous year, employment rates for the second quarter of FY2020 decreased in the Pathways region from 7.3% to 2.4%. (Page 4)

Average second quarter earnings of employed CRT clients decreased from \$3,032 in FY2019 to \$2,979 in FY2020. (Page 2)

Average earnings of employed CRT clients during the second quarter of FY2019, were highest in the Pathways, with earnings of \$4,826 per employed CRT client, followed by Rutland (\$4,142) and the Lamoille region (\$3,937). The lowest earnings per employed client were in Bennington (\$2,291) and the Chittenden region (\$2,642). (Page 6)

We look forward to your comments and your suggestions for further analyses of these data. As always, you can reach us by e-mail at ahs.dmhpip@vermont.gov.

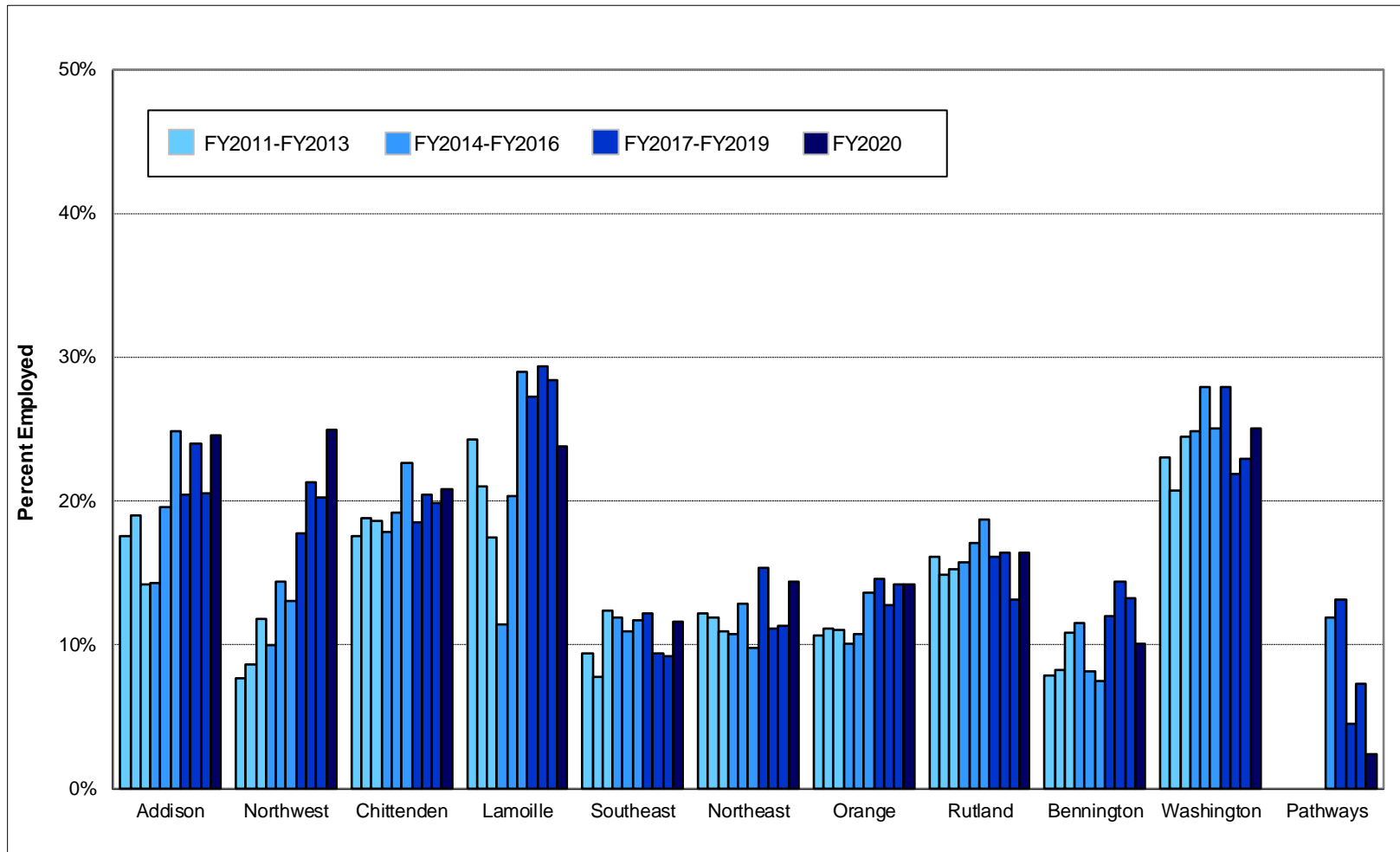
Statewide CRT Employment Rates and Average Earnings Second Quarter of Each Fiscal Year 2011 - 2020



| | Second Quarter of Fiscal Year | | | | | | | | | |
|-----------------------------|-------------------------------|-------------|-------------|-------------|-------------|-------------|-------------|-------------|-------------|-------------|
| | <u>2011</u> | <u>2012</u> | <u>2013</u> | <u>2014</u> | <u>2015</u> | <u>2016</u> | <u>2017</u> | <u>2018</u> | <u>2019</u> | <u>2020</u> |
| % Employed | 15.1% | 14.8% | 15.7% | 15.1% | 17.0% | 17.9% | 18.0% | 17.5% | 16.8% | 18.4% |
| \$ / Employed Client | \$2,318 | \$2,340 | \$2,486 | \$2,456 | \$2,437 | \$2,691 | \$2,552 | \$2,889 | \$3,032 | \$2,979 |

This report is based on record linkage of the DMH CRT and DOL databases. DMH client data are submitted by Community Programs in conformance with contractual requirements. DOL data are submitted by employers in conformance with state and federal laws. Workers who are excluded from DOL reporting are the self-employed, firm owners not incorporated and the following employee groups: elected officials, employees of nonprofit religious, charitable and educational organizations, unpaid family members, farm workers (with some exceptions), railroad employees, and individuals who work out of state. Analysis includes all employment reported for each quarter for active Community Rehabilitation and Treatment clients aged 18 - 64. Quarterly employment rates are lower than annual employment rates because not all clients who are employed during a year are employed during every quarter of the year.

Percent of CRT Clients Employed Second Quarter of Each Fiscal Year 2011 - 2020



This report is based on record linkage of the DMH CRT and DOL databases. DMH client data are submitted by Community Programs in conformance with contractual requirements. DOL data are submitted by employers in conformance with state and federal laws. Workers who are excluded from DOL reporting are the self-employed, firm owners not incorporated and the following employee groups: elected officials, employees of nonprofit religious, charitable and educational organizations, unpaid family members, farm workers (with some exceptions), railroad employees, and individuals who work out of state. Analysis includes all employment reported for each quarter for active Community Rehabilitation and Treatment clients aged 18 - 64. Quarterly employment rates are lower than annual employment rates because not all clients who are employed during a year are employed during every quarter of the year.

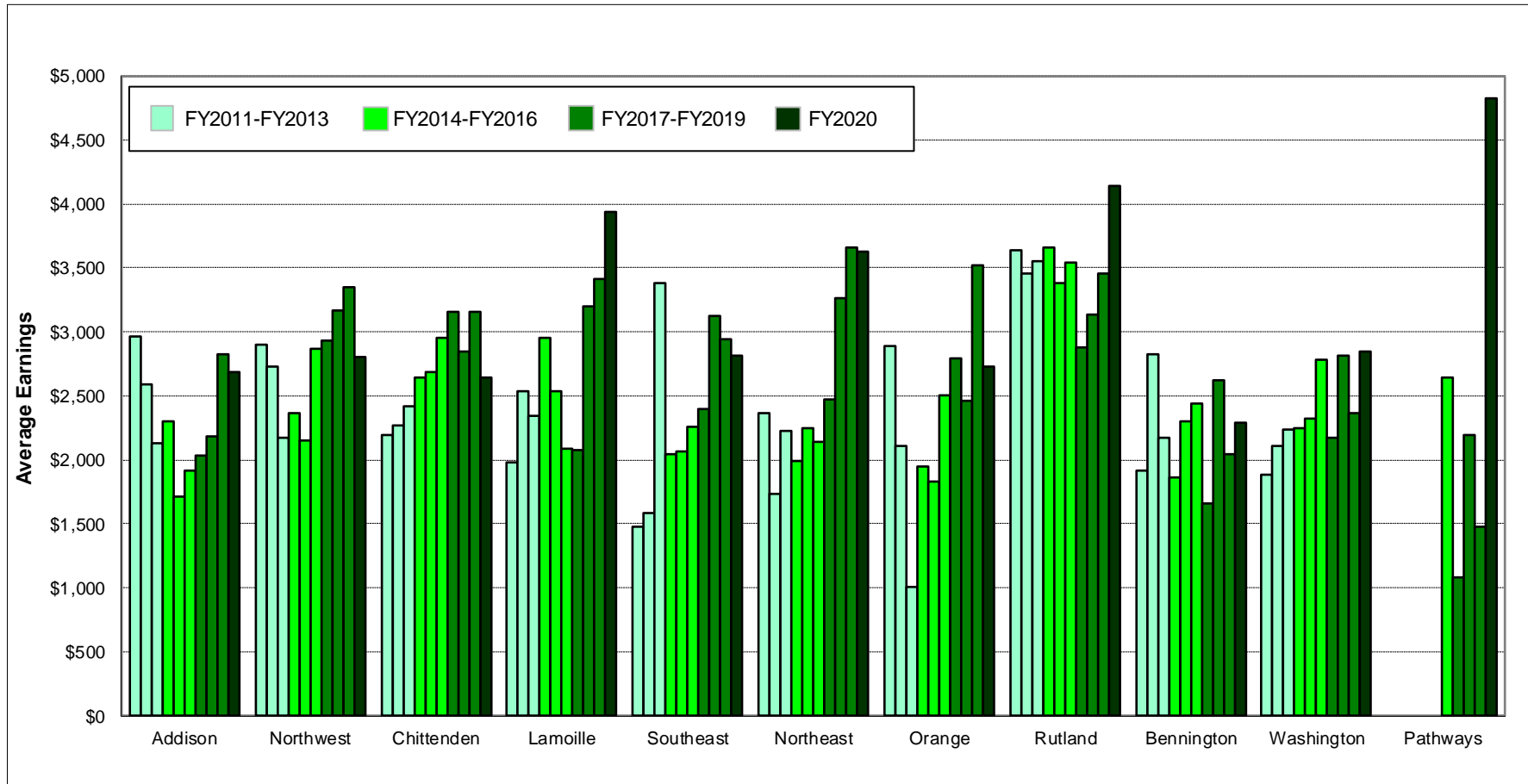
CRT Clients Served (#) and Percent Employed (%)

Second Quarter of Each Fiscal Year 2011 - 2020

| Year | Region | | | | | | | | | | | | | | | | | | Statewide | | | | | |
|-------------|---------|------|-----------|------|------------|------|----------|------|-----------|------|-----------|------|--------|------|---------|------|------------|------|------------|------|----------|------|-------|------|
| | Addison | | Northwest | | Chittenden | | Lamoille | | Southeast | | Northeast | | Orange | | Rutland | | Bennington | | Washington | | Pathways | | # | % |
| | # | % | # | % | # | % | # | % | # | % | # | % | # | % | # | % | # | % | # | % | # | % | # | % |
| FY20 | 118 | 24.6 | 164 | 25.0 | 462 | 20.8 | 101 | 23.8 | 309 | 11.7 | 174 | 14.4 | 120 | 14.2 | 177 | 16.4 | 109 | 10.1 | 271 | 25.1 | 42 | 2.4 | 2,047 | 18.4 |
| FY19 | 122 | 20.5 | 173 | 20.2 | 494 | 19.8 | 109 | 28.4 | 335 | 9.3 | 194 | 11.3 | 120 | 14.2 | 198 | 13.1 | 113 | 13.3 | 266 | 22.9 | 41 | 7.3 | 2,165 | 16.8 |
| FY18 | 129 | 24.0 | 169 | 21.3 | 503 | 20.5 | 109 | 29.4 | 309 | 9.4 | 188 | 11.2 | 125 | 12.8 | 201 | 16.4 | 111 | 14.4 | 256 | 21.9 | 44 | 4.5 | 2,144 | 17.5 |
| FY17 | 137 | 20.4 | 175 | 17.7 | 486 | 18.5 | 99 | 27.3 | 320 | 12.2 | 208 | 15.4 | 137 | 14.6 | 205 | 16.1 | 108 | 12.0 | 254 | 28.0 | 38 | 13.2 | 2,167 | 18.0 |
| FY16 | 133 | 24.8 | 184 | 13.0 | 520 | 22.7 | 100 | 29.0 | 325 | 11.7 | 205 | 9.8 | 125 | 13.6 | 219 | 18.7 | 121 | 7.4 | 263 | 25.1 | 42 | 11.9 | 2,237 | 17.9 |
| FY15 | 138 | 19.6 | 187 | 14.4 | 542 | 19.2 | 108 | 20.4 | 302 | 10.9 | 194 | 12.9 | 121 | 10.7 | 211 | 17.1 | 122 | 8.2 | 272 | 27.9 | | | 2,197 | 17.0 |
| FY14 | 147 | 14.3 | 190 | 10.0 | 561 | 17.8 | 96 | 11.5 | 344 | 11.9 | 204 | 10.8 | 129 | 10.1 | 203 | 15.8 | 130 | 11.5 | 286 | 24.8 | | | 2,290 | 15.1 |
| FY13 | 148 | 14.2 | 195 | 11.8 | 554 | 18.6 | 109 | 17.4 | 347 | 12.4 | 210 | 11.0 | 136 | 11.0 | 223 | 15.2 | 129 | 10.9 | 298 | 24.5 | | | 2,349 | 15.7 |
| FY12 | 153 | 19.0 | 196 | 8.7 | 563 | 18.8 | 119 | 21.0 | 336 | 7.7 | 235 | 11.9 | 135 | 11.1 | 235 | 14.9 | 133 | 8.3 | 328 | 20.7 | | | 2,433 | 14.8 |
| FY11 | 165 | 17.6 | 196 | 7.7 | 574 | 17.6 | 111 | 24.3 | 339 | 9.4 | 271 | 12.2 | 131 | 10.7 | 230 | 16.1 | 139 | 7.9 | 334 | 23.1 | | | 2,490 | 15.1 |

This report is based on record linkage of the DMH CRT and DOL databases. DMH client data are submitted by Community Programs in conformance with contractual requirements. DOL data are submitted by employers in conformance with state and federal laws. Workers who are excluded from DOL reporting are the self-employed, firm owners not incorporated and the following employee groups: elected officials, employees of nonprofit religious, charitable and educational organizations, unpaid family members, farm workers (with some exceptions), railroad employees, and individuals who work out of state. Analysis includes all employment reported for each quarter for active Community Rehabilitation and Treatment clients aged 18 - 64. Quarterly employment rates are lower than annual employment rates because not all clients who are employed during a year are employed during every quarter of the year.

Average Earnings for Employed CRT Clients Second Quarter of Each Fiscal Year 2011 - 2020



This report is based on record linkage of the DMH CRT and DOL databases. DMH client data are submitted by Community Programs in conformance with contractual requirements. DOL data are submitted by employers in conformance with state and federal laws. Workers who are excluded from DOL reporting are the self-employed, firm owners not incorporated and the following employee groups: elected officials, employees of nonprofit religious, charitable and educational organizations, unpaid family members, farm workers (with some exceptions), railroad employees, and individuals who work out of state. Analysis includes all employment reported for each quarter for active Community Rehabilitation and Treatment clients aged 18 - 64. Quarterly employment rates are lower than annual employment rates because not all clients who are employed during a year are employed during every quarter of the year.

CRT Clients Employed (#) and Average Earnings for Employed Clients (\$)
Second Quarter of Each Fiscal Year 2011 - 2020

| Year | Region | | | | | | | | | | | | | | | | Statewide | | | | | | | |
|------|---------|---------|-----------|---------|------------|---------|----------|---------|-----------|---------|-----------|---------|--------|---------|---------|---------|------------|---------|------------|---------|----------|---------|-----|---------|
| | Addison | | Northwest | | Chittenden | | Lamoille | | Southeast | | Northeast | | Orange | | Rutland | | Bennington | | Washington | | Pathways | | # | \$ |
| | # | \$ | # | \$ | # | \$ | # | \$ | # | \$ | # | \$ | # | \$ | # | \$ | # | \$ | # | \$ | | | | |
| FY20 | 29 | \$2,690 | 41 | \$2,809 | 96 | \$2,643 | 24 | \$3,937 | 36 | \$2,813 | 25 | \$3,626 | 17 | \$2,728 | 29 | \$4,142 | 11 | \$2,291 | 68 | \$2,843 | 1 | \$4,826 | 377 | \$2,979 |
| FY19 | 25 | \$2,826 | 35 | \$3,352 | 98 | \$3,154 | 31 | \$3,410 | 31 | \$2,939 | 22 | \$3,658 | 17 | \$3,525 | 26 | \$3,459 | 15 | \$2,048 | 61 | \$2,364 | 3 | \$1,482 | 364 | \$3,032 |
| FY18 | 31 | \$2,188 | 36 | \$3,168 | 103 | \$2,847 | 32 | \$3,199 | 29 | \$3,124 | 21 | \$3,265 | 16 | \$2,465 | 33 | \$3,135 | 16 | \$2,624 | 56 | \$2,812 | 2 | \$2,198 | 375 | \$2,889 |
| FY17 | 28 | \$2,035 | 31 | \$2,938 | 90 | \$3,154 | 27 | \$2,080 | 39 | \$2,395 | 32 | \$2,471 | 20 | \$2,791 | 33 | \$2,877 | 13 | \$1,660 | 71 | \$2,172 | 5 | \$1,087 | 389 | \$2,552 |
| FY16 | 33 | \$1,920 | 24 | \$2,865 | 118 | \$2,951 | 29 | \$2,087 | 38 | \$2,260 | 20 | \$2,140 | 17 | \$2,502 | 41 | \$3,546 | 9 | \$2,438 | 66 | \$2,783 | 5 | \$2,639 | 400 | \$2,691 |
| FY15 | 27 | \$1,718 | 27 | \$2,156 | 104 | \$2,682 | 22 | \$2,537 | 33 | \$2,068 | 25 | \$2,245 | 13 | \$1,835 | 36 | \$3,385 | 10 | \$2,304 | 76 | \$2,323 | | | 373 | \$2,437 |
| FY14 | 21 | \$2,301 | 19 | \$2,368 | 100 | \$2,640 | 11 | \$2,956 | 41 | \$2,048 | 22 | \$1,987 | 13 | \$1,948 | 32 | \$3,661 | 15 | \$1,859 | 71 | \$2,244 | | | 345 | \$2,456 |
| FY13 | 21 | \$2,130 | 23 | \$2,178 | 103 | \$2,416 | 19 | \$2,348 | 43 | \$3,386 | 23 | \$2,230 | 15 | \$1,012 | 34 | \$3,552 | 14 | \$2,173 | 73 | \$2,236 | | | 368 | \$2,486 |
| FY12 | 29 | \$2,589 | 17 | \$2,730 | 106 | \$2,269 | 25 | \$2,538 | 26 | \$1,587 | 28 | \$1,731 | 15 | \$2,114 | 35 | \$3,458 | 11 | \$2,831 | 68 | \$2,106 | | | 360 | \$2,340 |
| FY11 | 29 | \$2,968 | 15 | \$2,899 | 101 | \$2,195 | 27 | \$1,982 | 32 | \$1,475 | 33 | \$2,370 | 14 | \$2,894 | 37 | \$3,638 | 11 | \$1,914 | 77 | \$1,885 | | | 376 | \$2,318 |

This report is based on record linkage of the DMH CRT and DOL databases. DMH client data are submitted by Community Programs in conformance with contractual requirements. DOL data are submitted by employers in conformance with state and federal laws. Workers who are excluded from DOL reporting are the self-employed, firm owners not incorporated and the following employee groups: elected officials, employees of nonprofit religious, charitable and educational organizations, unpaid family members, farm workers (with some exceptions), railroad employees, and individuals who work out of state. Analysis includes all employment reported for each quarter for active Community Rehabilitation and Treatment clients aged 18 - 64. Quarterly employment rates are lower than annual employment rates because not all clients who are employed during a year are employed during every quarter of the year.

**Quarter 2 Fiscal Year 2020 Employment
of Community Rehabilitation and Treatment Clients
In Vermont**

| Clinic | Total Number Served | Employment | | Wages Reported | |
|-------------------|---------------------------|--------------------|---------------------|----------------|------------------------------|
| | | Number Employed | Percent Employed | Total Wages | Wages per Employed Client |
| Addison - CSAC | 118 | 29 | 24.6% | \$77,999 | \$2,690 |
| Northwest - NCSS | 164 | 41 | 25.0% | \$115,162 | \$2,809 |
| Chittenden - HC | 462 | 96 | 20.8% | \$253,754 | \$2,643 |
| Lamoille - LCMH | 101 | 24 | 23.8% | \$94,489 | \$3,937 |
| Southeast - HCRS | 309 | 36 | 11.7% | \$101,251 | \$2,813 |
| Northeast - NKHS | 174 | 25 | 14.4% | \$90,657 | \$3,626 |
| Orange - CMC | 120 | 17 | 14.2% | \$46,380 | \$2,728 |
| Rutland - RMHS | 177 | 29 | 16.4% | \$120,116 | \$4,142 |
| Bennington - UCS | 109 | 11 | 10.1% | \$25,202 | \$2,291 |
| Washington - WCMH | 271 | 68 | 25.1% | \$193,317 | \$2,843 |
| Pathways - PATH | 42 | 1 | 2.4% | \$4,826 | \$4,826 |
| Quarterly Total | 2,047 | 377 | 18.4% | \$1,123,152 | \$2,979 |

This report is based on record linkage of the Vermont DMH CRT and DOL databases. DMH client data are submitted by Community Programs in conformance with contractual requirements. DOL data are submitted by employers in conformance with state and federal laws. Workers who are excluded from DOL reporting are the self-employed, firm owners not incorporated and the following employee groups: elected officials, employees of nonprofit religious, charitable and educational organizations, unpaid family members, farm workers (with some exceptions), railroad employees, and individuals who work out of state. Analysis includes all employment reported for each quarter for active Community Rehabilitation and Treatment clients aged 18 - 64. Quarterly employment rates are lower than annual employment rates because not all clients who are employed during a year are employed during every quarter of the year.