

Vermont Mental Health Performance Indicator Project

Vermont Agency of Human Services, Department of Mental Health
280 State Drive NOB 2 North, Waterbury, Vermont 05671

TO: Vermont Mental Health Performance Indicator Project
Advisory Group and Interested Parties

FROM: Sheila Leno

DATE: October 25, 2022

RE: Employment of CRT Clients: Q4 of FY2022

This week's brief report provides FY2022 fourth quarter employment rates for clients served by Vermont's Community Rehabilitation and Treatment (CRT) programs for adults with serious mental illness. This report also includes rates for fourth quarters (April through June) of nine previous fiscal years, FY2013 through FY2021. Previous reports regarding employment rates are available online at:

<https://mentalhealth.vermont.gov/reports-forms-and-manuals/reports/statistical-reports-and-data>.

This report, like previous reports in this series, is based on analysis of client data submitted to the Vermont Department of Mental Health (DMH) by designated community mental health agencies and Vermont employment data submitted to DMH by the Vermont Department of Labor (DOL).

As you will see, statewide fourth quarter CRT employment rates bounce around from a high of 17.6% in FY2014, to a low of 12.5% in FY2020, to 15.5% in FY2022.

During the fourth quarter of FY2022, Northwest had the state's highest employment rate (22.5%), followed by Washington (21.2%). The lowest employment rates were in Pathways and Bennington (2.3% and 9.3%, respectively).

Statewide, average fourth quarter earnings per employed CRT client increased slightly from \$3,336 in the fourth quarter of FY2021 to \$3,799 in the fourth quarter of FY2022.

During the fourth quarter of FY2022, Chittenden had the highest reported fourth quarter earnings per employed client (\$4,344), followed by Northeast (\$4,222) and Lamoille (\$4,188). The lowest fourth quarter earnings per employed client were in Rutland (\$2,815), Bennington (\$2,916) and Pathways (\$3,095).

As always, we look forward to your comments and your suggestions for further analyses of these data. You can reach us by e-mail at ahs.dmhpip@vermont.gov.

Statewide CRT Employment Rates and Average Earnings

Fourth Quarter (Apr-Jun) of Fiscal Years 2013 - 2022

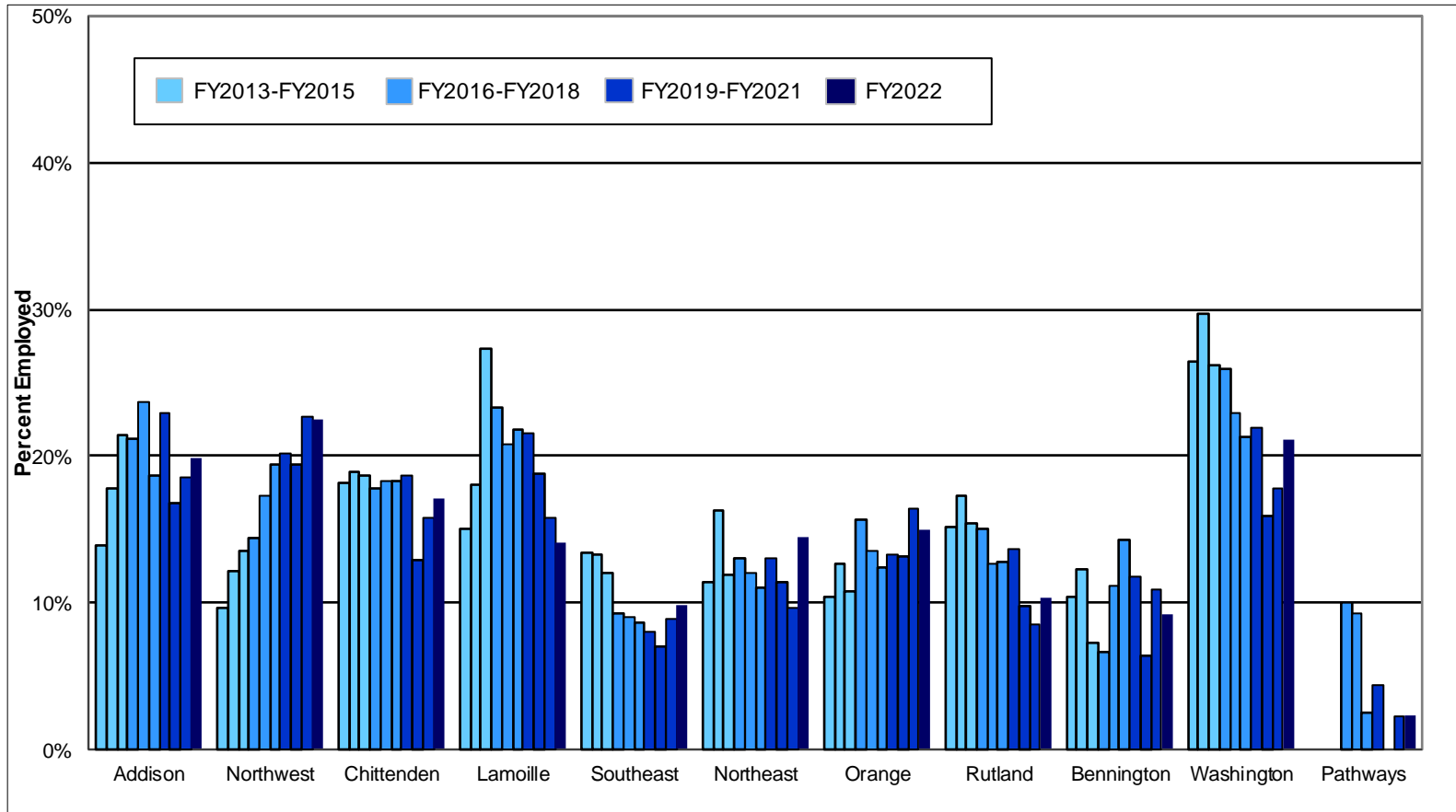


	Fourth Quarter of Fiscal Year									
	<u>2013</u>	<u>2014</u>	<u>2015</u>	<u>2016</u>	<u>2017</u>	<u>2018</u>	<u>2019</u>	<u>2020</u>	<u>2021</u>	<u>2022</u>
% Employed	15.6	17.6	16.8	16.2	15.9	15.5	16.1	12.5	14.1	15.5
\$ per Employed Client	2,457	2,375	2,572	2,747	2,602	2,871	2,863	2,933	3,336	3,799

This report is based on analysis of the Vermont Department of Mental Health (DMH) and Department of Labor (DOL) databases. DMH client data are submitted by community programs in conformance with contractual requirements. DOL data are submitted by employers in conformance with state and federal laws. Workers who are excluded from DOL reporting are the self-employed, firm owners not incorporated and the following employee groups: elected officials, employees of nonprofit religious, charitable and educational organizations, unpaid family members, farm workers (with some exceptions), railroad employees, and employment in neighboring states. Analysis includes Community Rehabilitation and Treatment (CRT) clients aged 18 - 64 who were active during each reporting quarter and includes all employment reported for each quarter. Quarterly employment rates are lower than annual employment rates because not all clients who are employed during a year are employed during every quarter of the year.

CRT Clients Employed

Fourth Quarter (Apr-Jun) of Fiscal Years 2013 - 2022



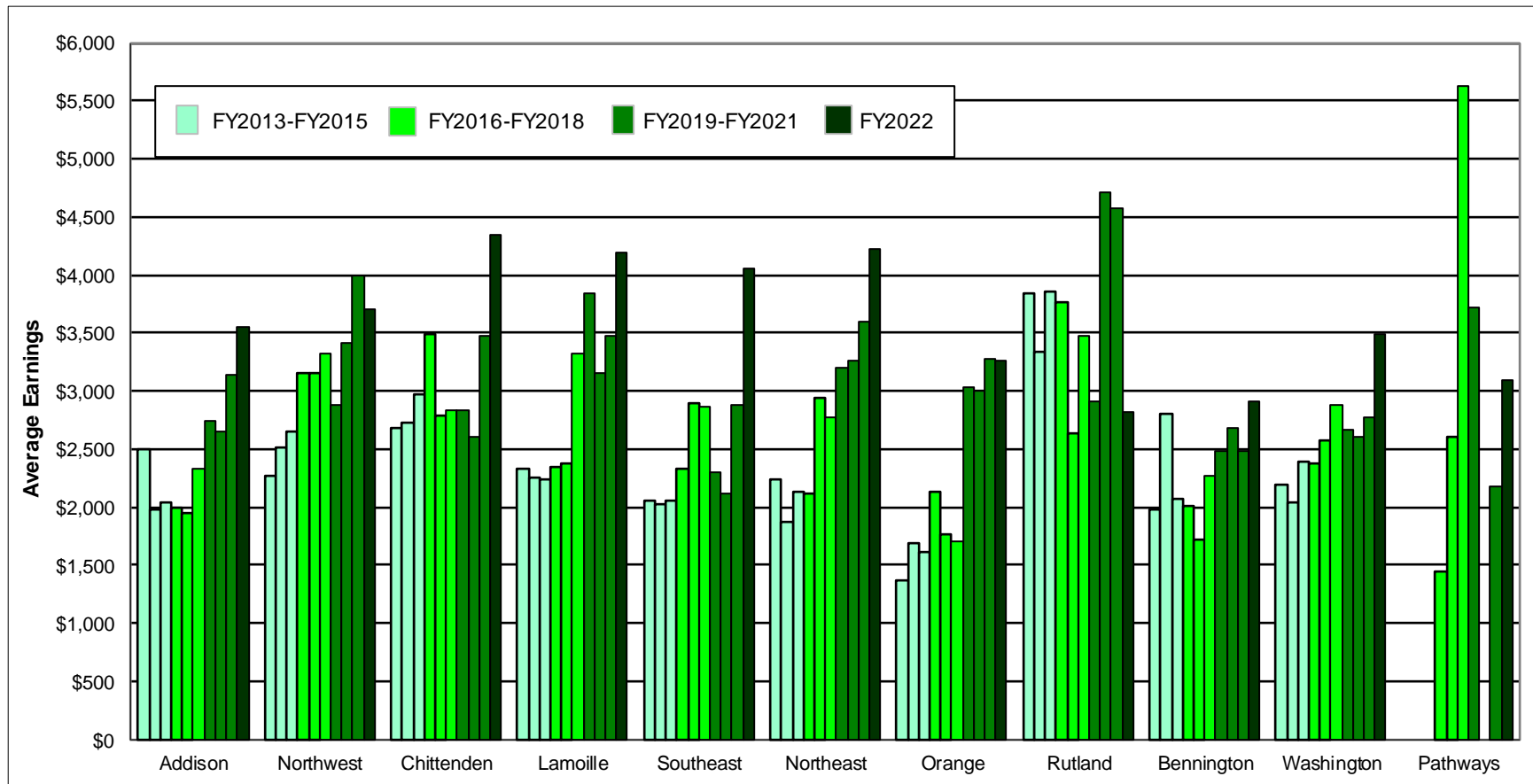
This report is based on analysis of the Vermont Department of Mental Health (DMH) and Department of Labor (DOL) databases. DMH client data are submitted by community programs in conformance with contractual requirements. DOL data are submitted by employers in conformance with state and federal laws. Workers who are excluded from DOL reporting are the self-employed, firm owners not incorporated and the following employee groups: elected officials, employees of nonprofit religious, charitable and educational organizations, unpaid family members, farm workers (with some exceptions), railroad employees, and employment in neighboring states. Analysis includes Community Rehabilitation and Treatment (CRT) clients aged 18 - 64 who were active during each reporting quarter and includes all employment reported for each quarter. Quarterly employment rates are lower than annual employment rates because not all clients who are employed during a year are employed during every quarter of the year.

Total CRT Clients Served (#) and Percent Employed (%) Fourth Quarter (Apr-Jun) of Fiscal Years 2013 - 2022

Year	Region																							
	Addison		Northwest		Chittenden		Lamoille		Southeast		Northeast		Orange		Rutland		Bennington		Washington		Pathways		Statewide	
	#	%	#	%	#	%	#	%	#	%	#	%	#	%	#	%	#	%	#	%	#	%	#	%
FY22	106	19.8	151	22.5	432	17.1	85	14.1	254	9.8	145	14.5	107	15.0	154	10.4	108	9.3	274	21.2	43	2.3	1,859	15.5
FY21	113	18.6	159	22.6	430	15.8	89	15.7	293	8.9	156	9.6	110	16.4	165	8.5	110	10.9	269	17.8	44	2.3	1,938	14.1
FY20	119	16.8	165	19.4	465	12.9	96	18.8	299	7.0	166	11.4	114	13.2	184	9.8	109	6.4	271	15.9	39	0.0	2,027	12.5
FY19	122	23.0	173	20.2	482	18.7	107	21.5	314	8.0	185	13.0	121	13.2	191	13.6	111	11.7	269	21.9	46	4.3	2,121	16.1
FY18	129	18.6	175	19.4	502	18.3	110	21.8	326	8.6	190	11.1	129	12.4	212	12.7	105	14.3	258	21.3	41	2.4	2,177	15.5
FY17	135	23.7	174	17.2	510	18.2	101	20.8	324	9.0	199	12.1	133	13.5	198	12.6	108	11.1	261	23.0	43	9.3	2,186	15.9
FY16	142	21.1	180	14.4	518	17.8	107	23.4	323	9.3	214	13.1	134	15.7	213	15.0	120	6.7	266	25.9	40	10.0	2,257	16.2
FY15	135	21.5	185	13.5	537	18.6	106	27.4	316	12.0	193	11.9	130	10.8	214	15.4	123	7.3	271	26.2			2,210	16.8
FY14	146	17.8	190	12.1	562	18.9	105	18.1	330	13.3	196	16.3	127	12.6	208	17.3	138	12.3	276	29.7			2,278	17.6
FY13	151	13.9	196	9.7	563	18.1	100	15.0	343	13.4	202	11.4	134	10.4	218	15.1	125	10.4	295	26.4			2,327	15.6

This report is based on analysis of the Vermont Department of Mental Health (DMH) and Department of Labor (DOL) databases. DMH client data are submitted by community programs in conformance with contractual requirements. DOL data are submitted by employers in conformance with state and federal laws. Workers who are excluded from DOL reporting are the self-employed, firm owners not incorporated and the following employee groups: elected officials, employees of nonprofit religious, charitable and educational organizations, unpaid family members, farm workers (with some exceptions), railroad employees, and employment in neighboring states. Analysis includes Community Rehabilitation and Treatment (CRT) clients aged 18 - 64 who were active during each reporting quarter and includes all employment reported for each quarter. Quarterly employment rates are lower than annual employment rates because not all clients who are employed during a year are employed during every quarter of the year.

Average Earnings for Employed CRT Clients Fourth Quarter (Apr-Jun) of Fiscal Years 2013 - 2022



This report is based on analysis of the Vermont Department of Mental Health (DMH) and Department of Labor (DOL) databases. DMH client data are submitted by community programs in conformance with contractual requirements. DOL data are submitted by employers in conformance with state and federal laws. Workers who are excluded from DOL reporting are the self-employed, firm owners not incorporated and the following employee groups: elected officials, employees of nonprofit religious, charitable and educational organizations, unpaid family members, farm workers (with some exceptions), railroad employees, and employment in neighboring states. Analysis includes Community Rehabilitation and Treatment (CRT) clients aged 18 - 64 who were active during each reporting quarter and includes all employment reported for each quarter. Quarterly employment rates are lower than annual employment rates because not all clients who are employed during a year are employed during every quarter of the year.

CRT Clients Employed (#) and Average Earnings for Employed Clients (\$) Fourth Quarter (Apr-Jun) of Fiscal Years 2013 - 2022

Year	Region																		Statewide \$				
	Addison		Northwest		Chittenden		Lamoille		Southeast		Northeast		Orange		Rutland		Bennington			Washington		Pathways	
	#	\$	#	\$	#	\$	#	\$	#	\$	#	\$	#	\$	#	\$	#	\$	#	\$	#	\$	
FY22	21	3,551	34	3,706	74	4,344	12	4,188	25	4,051	21	4,222	16	3,267	16	2,815	10	2,916	58	3,491	1	3,095	3,799
FY21	21	3,132	36	3,989	68	3,472	14	3,472	26	2,874	15	3,595	18	3,281	14	4,567	12	2,486	48	2,767	1	2,180	3,336
FY20	20	2,648	32	3,411	60	2,601	18	3,157	21	2,118	19	3,266	15	2,996	18	4,719	7	2,688	43	2,602	0	0	2,933
FY19	28	2,736	35	2,882	90	2,831	23	3,845	25	2,306	24	3,197	16	3,025	26	2,917	13	2,487	59	2,663	2	3,723	2,863
FY18	24	2,326	34	3,317	92	2,840	24	3,330	28	2,865	21	2,770	16	1,709	27	3,473	15	2,275	55	2,884	1	5,625	2,871
FY17	32	1,949	30	3,156	93	2,796	21	2,379	29	2,898	24	2,946	18	1,769	25	2,639	12	1,718	60	2,579	4	2,605	2,602
FY16	30	2,001	26	3,159	92	3,490	25	2,350	30	2,324	28	2,121	21	2,127	32	3,770	8	2,017	69	2,381	4	1,441	2,747
FY15	29	2,044	25	2,649	100	2,974	29	2,242	38	2,062	23	2,137	14	1,613	33	3,857	9	2,077	71	2,398			2,572
FY14	26	1,984	23	2,518	106	2,722	19	2,251	44	2,025	32	1,866	16	1,694	36	3,344	17	2,808	82	2,044			2,375
FY13	21	2,499	19	2,273	102	2,688	15	2,327	46	2,059	23	2,235	14	1,372	33	3,842	13	1,980	78	2,200			2,457

This report is based on analysis of the Vermont Department of Mental Health (DMH) and Department of Labor (DOL) databases. DMH client data are submitted by community programs in conformance with contractual requirements. DOL data are submitted by employers in conformance with state and federal laws. Workers who are excluded from DOL reporting are the self-employed, firm owners not incorporated and the following employee groups: elected officials, employees of nonprofit religious, charitable and educational organizations, unpaid family members, farm workers (with some exceptions), railroad employees, and employment in neighboring states. Analysis includes Community Rehabilitation and Treatment (CRT) clients aged 18 - 64 who were active during each reporting quarter and includes all employment reported for each quarter. Quarterly employment rates are lower than annual employment rates because not all clients who are employed during a year are employed during every quarter of the year.

Fourth Quarter FY2022 Employment of Community Rehabilitation and Treatment Clients In Vermont

Region	Total Number Served	Employment		Wages Reported	
		Number Employed	Percent Employed	Total Wages	Wages per Employed Client
Addison	106	21	19.8%	\$74,566	\$3,551
Northwest	151	34	22.5%	\$125,988	\$3,706
Chittenden	432	74	17.1%	\$321,431	\$4,344
Lamoille	85	12	14.1%	\$50,260	\$4,188
Southeast	254	25	9.8%	\$101,278	\$4,051
Northeast	145	21	14.5%	\$88,667	\$4,222
Orange	107	16	15.0%	\$52,278	\$3,267
Rutland	154	16	10.4%	\$45,040	\$2,815
Bennington	108	10	9.3%	\$29,161	\$2,916
Washington	274	58	21.2%	\$202,466	\$3,491
Pathways	43	1	2.3%	\$3,095	\$3,095
Quarterly Total	1,859	288	15.5%	\$1,094,230	\$3,799

This report is based on analysis of the Vermont Department of Mental Health (DMH) and Department of Labor (DOL) databases. DMH client data are submitted by community programs in conformance with contractual requirements. DOL data are submitted by employers in conformance with state and federal laws. Workers who are excluded from DOL reporting are the self-employed, firm owners not incorporated and the following employee groups: elected officials, employees of nonprofit religious, charitable and educational organizations, unpaid family members, farm workers (with some exceptions), railroad employees, and employment in neighboring states. Analysis includes Community Rehabilitation and Treatment (CRT) clients aged 18 - 64 who were active during each reporting quarter and includes all employment reported for each quarter. Quarterly employment rates are lower than annual employment rates because not all clients who are employed during a year are employed during every quarter of the year.