

Vermont Mental Health Performance Indicator Project

Vermont Agency of Human Services, Department of Mental Health
280 State Drive NOB 2 North, Waterbury, Vermont 05671

TO: Vermont Mental Health Performance Indicator Project
Advisory Group and Interested Parties

FROM: Sheila Leno

DATE: March 21, 2022

RE: Employment of CRT Clients: First Quarter of Fiscal Years 2013-2022

This week's PIP provides the employment rates of adults with severe and persistent mental illness served by Vermont's Community Rehabilitation and Treatment (CRT) programs for the first quarter of FY2022 (July through September 2021) and for the first quarter of the previous nine fiscal years. Previous reports regarding employment rates are available online at: <https://mentalhealth.vermont.gov/reports-forms-and-manuals/reports/statistical-reports-and-data>.

Consistent with previous employment reports, this report is based on analysis of data obtained from the Vermont Department of Mental Health (DMH) Designated Agencies and one provisional Specialized Services Agency (SSA), and this data is then linked to data obtained from the Vermont Department of Labor (DOL). The Pathways to Housing organization was added as a provisional SSA during FY2015. More methodological details are provided in the attached tables.

As you will see, CRT first-quarter client employment rate bounced between 16.6% and 17.8% between FY2014 and FY2020. In FY2021, the employment rate dropped to a low of 10.8%, but bounced back to 16.1% in FY2022, (Page 2).

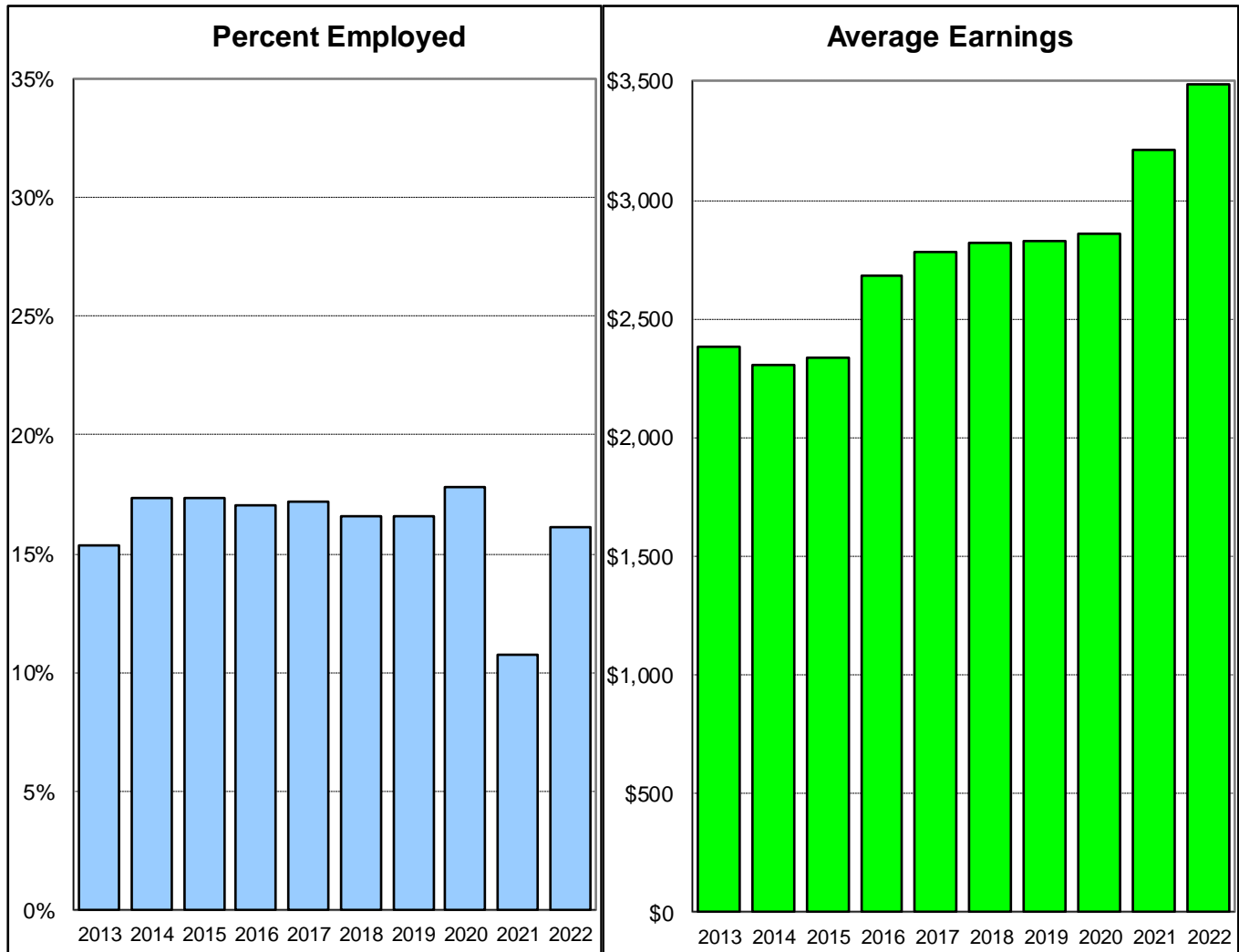
First quarter employment rates for CRT clients increased in all of Vermont's ten community mental health regions between fiscal years 2020 and 2021 and stayed the same at Pathways. This increase was greatest in Washington (WCMH) who experienced a 120% increase in CRT employment (from 9.7% to 21.4%) followed by Southeastern Vermont (HCRS) who experienced a 110% increase (from 4.8% to 10.1%) and Rutland (RMHS) who experienced a 105% increase (from 6.7% to 13.7%), (Page 4).

During the ten years under examination, statewide average first-quarter earnings of employed CRT clients hovered around \$2,300 between FY2013 and FY2015. Since then, the average earnings have continued to increase, from \$2,684 in FY2016 to \$3,486 in FY2022 (Page 2).

As always, we look forward to your comments and suggestions for further analyses of these data by e-mail at ahs.dmhpip@vermont.gov.

Statewide CRT Employment Rates and Average Earnings

First Quarter of Each Fiscal Year 2013 - 2022

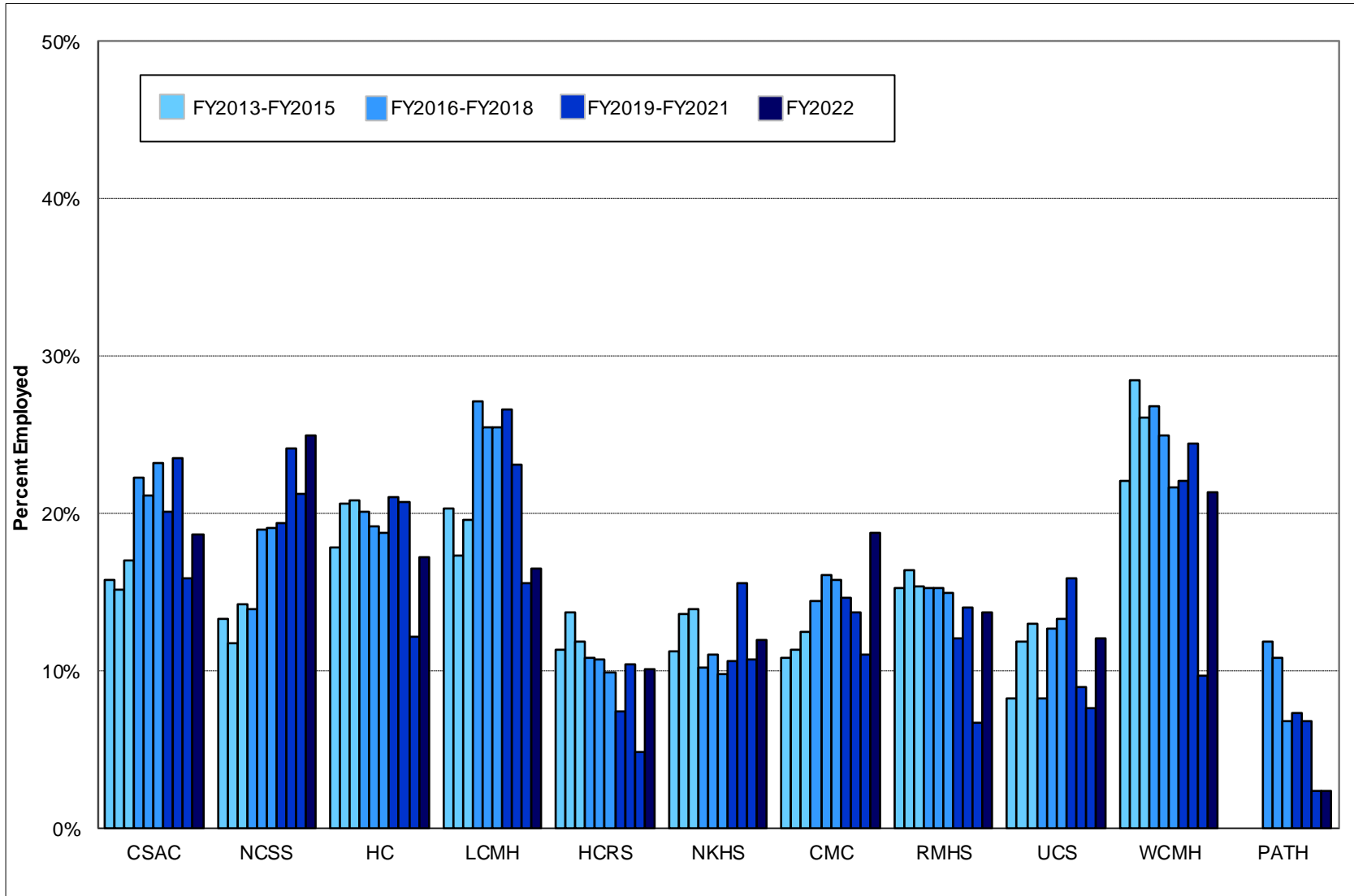


	First Quarter (July - September) of Fiscal Year									
	<u>2013</u>	<u>2014</u>	<u>2015</u>	<u>2016</u>	<u>2017</u>	<u>2018</u>	<u>2019</u>	<u>2020</u>	<u>2021</u>	<u>2022</u>
% Employed	15.3	17.4	17.4	17.0	17.2	16.6	16.6	17.8	10.8	16.1
\$ / Employed Client	2,379	2,303	2,339	2,684	2,782	2,817	2,826	2,857	3,208	3,486

This report is based on record linkage of the Vermont Department of Mental Health (DMH) and Department of Labor (DOL) databases. DMH client data are submitted by Community Programs in conformance with contractual requirements. DOL data are submitted by employers in conformance with state and federal laws. Workers who are excluded from DOL reporting are the self-employed, firm owners not incorporated and the following employee groups: elected officials, employees of nonprofit religious, charitable and educational organizations, unpaid family members, farm workers (with some exceptions), railroad employees, and individuals employed in neighboring states. Analysis includes Community Rehabilitation and Treatment (CRT) clients aged 18 - 64 who were active during each reporting quarter and includes all employment reported for each quarter. Quarterly employment rates are lower than annual employment rates because not all clients who are employed during a year are employed during every quarter of the year.

CRT Clients Employed

First Quarter (July - September) of Each Fiscal Year 2013 - 2022



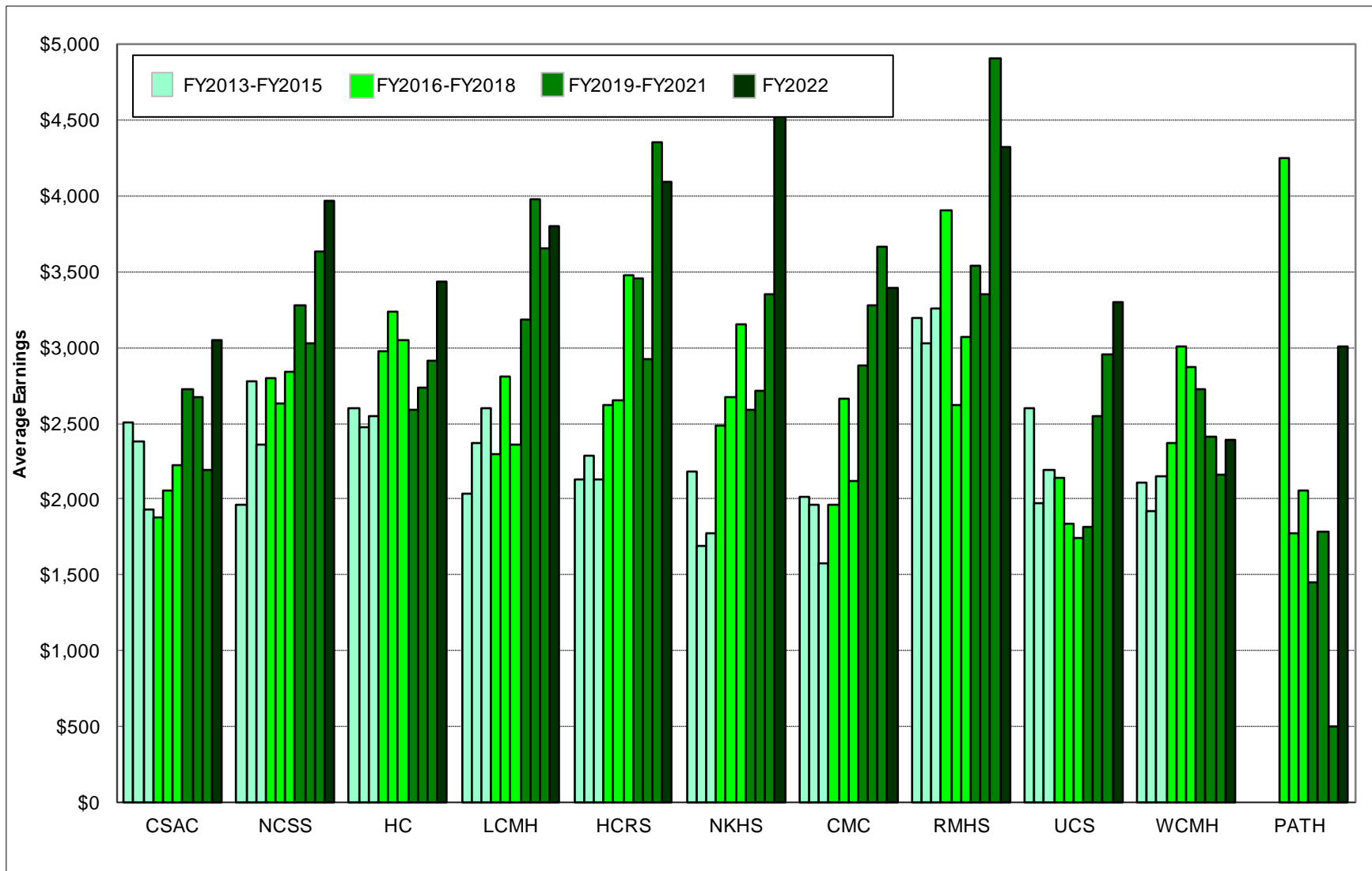
This report is based on record linkage of the Vermont Department of Mental Health (DMH) and Department of Labor (DOL) databases. DMH client data are submitted by Community Programs in conformance with contractual requirements. DOL data are submitted by employers in conformance with state and federal laws. Workers who are excluded from DOL reporting are the self-employed, firm owners not incorporated and the following employee groups: elected officials, employees of nonprofit religious, charitable and educational organizations, unpaid family members, farm workers (with some exceptions), railroad employees, and individuals employed in neighboring states. Analysis includes Community Rehabilitation and Treatment (CRT) clients aged 18 - 64 who were active during each reporting quarter and includes all employment reported for each quarter. Quarterly employment rates are lower than annual employment rates because not all clients who are employed during a year are employed during every quarter of the year.

Total CRT Clients Served (#) and Percent Employed (%)
First Quarter (July - September) of Each Fiscal Year 2013 - 2022

Year	Clinic																		Statewide					
	CSAC		NCSS		HC		LCMH		HCRS		NKHS		CMC		RMHS		UCS				WCMH		PATH	
	#	%	#	%	#	%	#	%	#	%	#	%	#	%	#	%	#	%	#	%	#	%	#	%
FY22	107	18.7	152	25.0	430	17.2	85	16.5	287	10.1	150	12.0	101	18.8	153	13.7	108	12.0	262	21.4	42	2.4	1,877	16.1
FY21	113	15.9	160	21.3	451	12.2	96	15.6	291	4.8	158	10.8	118	11.0	179	6.7	105	7.6	268	9.7	42	2.4	1,981	10.8
FY20	119	23.5	166	24.1	468	20.7	104	23.1	306	10.5	180	15.6	117	13.7	185	14.1	112	8.9	262	24.4	44	6.8	2,063	17.8
FY19	124	20.2	170	19.4	489	21.1	109	26.6	323	7.4	198	10.6	123	14.6	198	12.1	107	15.9	263	22.1	41	7.3	2,145	16.6
FY18	129	23.3	168	19.0	506	18.8	102	25.5	313	9.9	193	9.8	127	15.7	200	15.0	105	13.3	254	21.7	44	6.8	2,141	16.6
FY17	137	21.2	179	19.0	491	19.1	98	25.5	318	10.7	209	11.0	137	16.1	209	15.3	110	12.7	252	25.0	37	10.8	2,177	17.2
FY16	130	22.3	180	13.9	521	20.2	103	27.2	324	10.8	195	10.3	132	14.4	216	15.3	121	8.3	261	26.8	42	11.9	2,225	17.0
FY15	141	17.0	189	14.3	546	20.9	107	19.6	312	11.9	186	14.0	120	12.5	208	15.4	131	13.0	272	26.1			2,212	17.4
FY14	145	15.2	196	11.7	562	20.6	98	17.3	334	13.8	199	13.6	132	11.4	207	16.4	126	11.9	291	28.5			2,290	17.4
FY13	152	15.8	196	13.3	559	17.9	108	20.4	343	11.4	213	11.3	139	10.8	235	15.3	133	8.3	312	22.1			2,390	15.3

This report is based on record linkage of the Vermont Department of Mental Health (DMH) and Department of Labor (DOL) databases. DMH client data are submitted by Community Programs in conformance with contractual requirements. DOL data are submitted by employers in conformance with state and federal laws. Workers who are excluded from DOL reporting are the self-employed, firm owners not incorporated and the following employee groups: elected officials, employees of nonprofit religious, charitable and educational organizations, unpaid family members, farm workers (with some exceptions), railroad employees, and individuals employed in neighboring states. Analysis includes Community Rehabilitation and Treatment (CRT) clients aged 18 - 64 who were active during each reporting quarter and includes all employment reported for each quarter. Quarterly employment rates are lower than annual employment rates because not all clients who are employed during a year are employed during every quarter of the year.

Average Earnings for Employed CRT Clients First Quarter (July - September) of Each Fiscal Year 2013 - 2022



This report is based on record linkage of the Vermont Department of Mental Health (DMH) and Department of Labor (DOL) databases. DMH client data are submitted by Community Programs in conformance with contractual requirements. DOL data are submitted by employers in conformance with state and federal laws. Workers who are excluded from DOL reporting are the self-employed, firm owners not incorporated and the following employee groups: elected officials, employees of nonprofit religious, charitable and educational organizations, unpaid family members, farm workers (with some exceptions), railroad employees, and individuals employed in neighboring states. Analysis includes Community Rehabilitation and Treatment (CRT) clients aged 18 - 64 who were active during each reporting quarter and includes all employment reported for each quarter. Quarterly employment rates are lower than annual employment rates because not all clients who are employed during a year are employed during every quarter of the year.

**CRT Clients Employed (#) and Average Earnings for Employed Clients (\$)
First Quarter (July - September) of Each Fiscal Year 2013 - 2022**

Year	Clinic																Statewide \$						
	CSAC		NCSS		HC		LCMH		HCRS		NKHS		CMC		RMHS			UCS		WCMH		PATH	
	#	\$	#	\$	#	\$	#	\$	#	\$	#	\$	#	\$	#	\$		#	\$	#	\$	#	\$
FY22	20	3,051	38	3,971	74	3,441	14	3,798	29	4,093	18	4,575	19	3,398	21	4,323	13	3,304	56	2,396	1	3,004	3,486
FY21	18	2,193	34	3,636	55	2,918	15	3,656	14	4,356	17	3,350	13	3,669	12	4,908	8	2,952	26	2,165	1	500	3,208
FY20	28	2,675	40	3,027	97	2,739	24	3,978	32	2,923	28	2,716	16	3,283	26	3,357	10	2,544	64	2,408	3	1,787	2,857
FY19	25	2,727	33	3,284	103	2,590	29	3,181	24	3,460	21	2,594	18	2,881	24	3,540	17	1,817	58	2,726	3	1,455	2,826
FY18	30	2,221	32	2,845	95	3,052	26	2,362	31	3,480	19	3,153	20	2,122	30	3,074	14	1,739	55	2,873	3	2,062	2,817
FY17	29	2,054	34	2,630	94	3,240	25	2,810	34	2,654	23	2,669	22	2,668	32	2,617	14	1,834	63	3,012	4	1,780	2,782
FY16	29	1,881	25	2,797	105	2,973	28	2,293	35	2,624	20	2,489	19	1,963	33	3,907	10	2,137	70	2,368	5	4,253	2,684
FY15	24	1,933	27	2,364	114	2,551	21	2,601	37	2,127	26	1,770	15	1,581	32	3,264	17	2,190	71	2,148			2,339
FY14	22	2,378	23	2,779	116	2,478	17	2,373	46	2,287	27	1,692	15	1,963	34	3,027	15	1,977	83	1,924			2,303
FY13	24	2,504	26	1,958	100	2,599	22	2,040	39	2,135	24	2,182	15	2,010	36	3,200	11	2,604	69	2,104			2,379

This report is based on record linkage of the Vermont Department of Mental Health (DMH) and Department of Labor (DOL) databases. DMH client data are submitted by Community Programs in conformance with contractual requirements. DOL data are submitted by employers in conformance with state and federal laws. Workers who are excluded from DOL reporting are the self-employed, firm owners not incorporated and the following employee groups: elected officials, employees of nonprofit religious, charitable and educational organizations, unpaid family members, farm workers (with some exceptions), railroad employees, and individuals employed in neighboring states. Analysis includes Community Rehabilitation and Treatment (CRT) clients aged 18 - 64 who were active during each reporting quarter and includes all employment reported for each quarter. Quarterly employment rates are lower than annual employment rates because not all clients who are employed during a year are employed during every quarter of the year.

FY2022 First Quarter (July - September) Employment of Community Rehabilitation and Treatment Clients In Vermont

Clinic	Total Number Served	Employment		Wages Reported	
		Number Employed	Percent Employed	Total Wages	Wages per Employed Client
CSAC	107	20	18.7%	\$61,029	\$3,051
NCSS	152	38	25.0%	\$150,895	\$3,971
HC	430	74	17.2%	\$254,597	\$3,441
LCMH	85	14	16.5%	\$53,165	\$3,798
HCRS	287	29	10.1%	\$118,704	\$4,093
NKHS	150	18	12.0%	\$82,351	\$4,575
CMC	101	19	18.8%	\$64,553	\$3,398
RMHS	153	21	13.7%	\$90,776	\$4,323
UCS	108	13	12.0%	\$42,958	\$3,304
WCMH	262	56	21.4%	\$134,186	\$2,396
PATH	42	1	2.4%	\$3,004	\$3,004
Quarterly Total	1,877	303	16.1%	\$1,056,219	\$3,486

This report is based on record linkage of the Vermont Department of Mental Health (DMH) and Department of Labor (DOL) databases. DMH client data are submitted by Community Programs in conformance with contractual requirements. DOL data are submitted by employers in conformance with state and federal laws. Workers who are excluded from DOL reporting are the self-employed, firm owners not incorporated and the following employee groups: elected officials, employees of nonprofit religious, charitable and educational organizations, unpaid family members, farm workers (with some exceptions), railroad employees, and individuals employed in neighboring states. Analysis includes Community Rehabilitation and Treatment (CRT) clients aged 18 - 64 who were active during each reporting quarter and includes all employment reported for each quarter. Quarterly employment rates are lower than annual employment rates because not all clients who are employed during a year are employed during every quarter of the year.