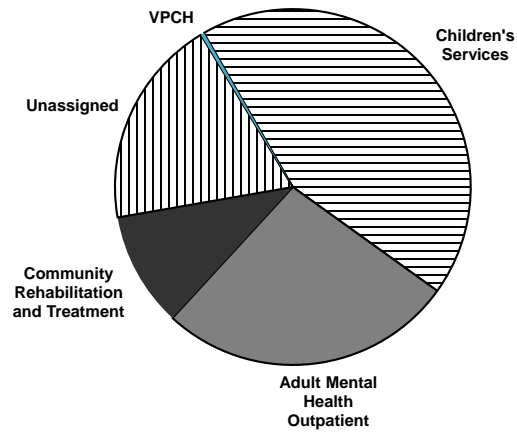


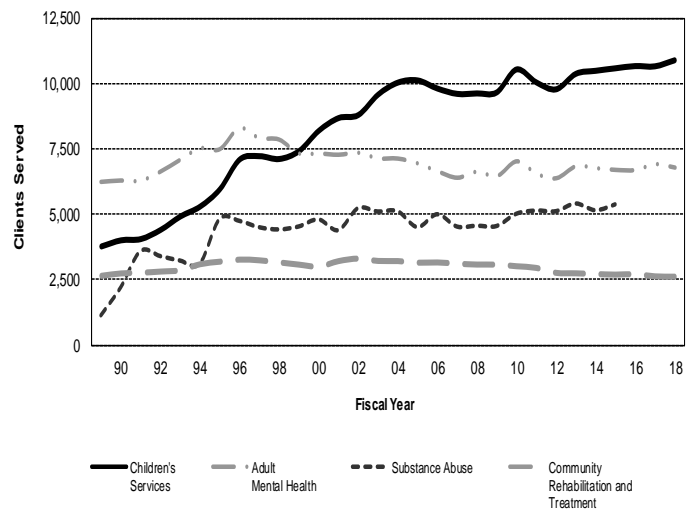
FY 2018 Statistical Report

VERMONT AGENCY OF HUMAN SERVICES
DEPARTMENT OF MENTAL HEALTH

**CLIENTS SERVED
by Primary Program Assignment
FY2018**

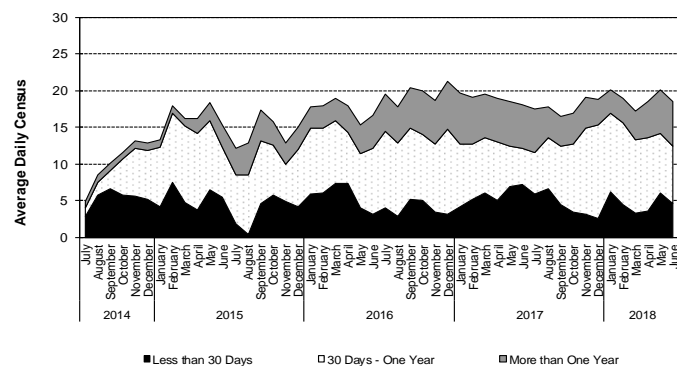


**COMMUNITY PROGRAMS
Clients Served Per Year**



Part 3: Vermont Psychiatric Care Hospital

**Average Daily Census by Length of Stay
FY2014 - FY2018**



VERMONT AGENCY OF HUMAN SERVICES

DEPARTMENT OF MENTAL HEALTH

280 State Drive, NOB 2 North
Waterbury, Vermont 05671-2010

Sarah Squirrell
Commissioner

FISCAL YEAR 2018

STATISTICAL REPORT

MAY 2019

Prepared by:

Sheila Leno, MS
Research and Statistic Chief

Cindy Chornyak, MS
Christopher Donnelly, PhD
David Horton, MS
Research and Statistics Analysts

INTRODUCTION

The Vermont Department of Mental Health (DMH) Statistical Report presents a systematic, quantitative overview of the clients and services of the Department's service delivery system for FY2018. This report is intended to function as a reference document for administrators, policymakers, and other interested parties. Annual statistical reports have been published since 1985. Together, these reports provide a detailed history of the development of systems of community care for people in need of mental health services and the decline in the amount of publicly funded institutional care.

The report consists of four major statistical sections followed by detailed notes that provide the definitions, methodological specifications, and caveats that are necessary to interpret the statistical results. The first section provides a comparative overview of the major programs. The next two sections provide more detailed descriptions of community service programs and a historical overview of the Vermont State Hospital. The fourth section provides a historical overview of the caseloads of the major community service programs.

The community service data presented in this report were provided by the state's Designated Agencies, and the Vermont Psychiatric Care Hospital (VPCH) inpatient data came directly from the VPCH Electronic Health Record.

All the data in this report should be considered in light of the detailed notes presented in Part 5. Part 5 provides definitions of terms used in this report as well as cautions that should be observed when interpreting the data. When the data are considered in light of the accompanying notes, they should provide a complete and accurate overview of the clients and activities of designated provider agencies.

Part 1 presents an overview of Vermont's service delivery system. The tables provide data on the number and characteristics (both demographic and clinical) of clients served and a summary of services provided. The major community programs include Children's Services, Adult Mental Health Outpatient, Community Rehabilitation and Treatment, and Emergency Services. This report also includes inpatient services provided by the Vermont Psychiatric Care Hospital (VPCH).

On intake at a designated agency, a client is usually assigned to one program (primary program assignment) although individual clients may receive services from more than one program (program of service). Client demographic and clinical characteristics are presented by last reported primary program assignment. Service data are presented by program of service and record the number of service events.

Part 2 presents a more detailed description of community clients and services in four subsections, one for each community program of service. For each of these programs of service, comparative client data are presented, and patterns of service delivery are detailed at the provider level.

Part 3 contains tables regarding individuals who were in the Vermont Psychiatric Care Hospital (VPCH) at any time during FY2018. With the opening of the newly constructed state hospital in FY2015, this section complemented the overall description of state hospital clients and services presented in Part 1 by focusing on patients' legal status, the discharge rates of recently admitted patients, and the length of stay for continuing patients. Information on each of these characteristics is presented by clients' catchment area, age, gender, diagnosis, and

type of admission. VPCH opened in July 2014 with a limited number of beds for part of July 2014. The hospital was fully open by August 2015.

Part 4 presents a historical overview of caseloads of the major programs from FY1989 through FY2018, including Children's Services, Adult Mental Health Outpatient, and Community Rehabilitation and Treatment.

Copies of this report and the reports for FY1999 forward are available online at:

<https://mentalhealth.vermont.gov/reports-forms-and-manuals/reports/statistical-reports-and-data>

Requests for additional information or analyses may be directed to:

ahs.dmhip@vermont.gov

ACKNOWLEDGMENTS

This report is the result of the cooperative efforts of individuals in every part of Vermont's mental health service delivery systems. The Department of Mental Health is indebted to all who contributed to the development and maintenance of the data systems that made this report possible.

The Directors of Vermont's designated agencies and institutions have been responsible for the development and maintenance of their respective Management Information Systems. Their support for the accurate accrual of comparable data has been and continues to be essential. The Department of Mental Health thanks the following administrators for their cooperation and support.

Robert Thorn (CSAC - Addison)	Linda Chambers (CMC - Orange)
Lorna Mattern (UCS - Bennington)	Dick Courcelle (RMHS - Rutland)
Bob Bick (HC - Chittenden)	George Karabakakis (HCRS - Southeast)
Savi Van Sluytman (LCMH - Lamoille)	Mary Moulton (WCMH - Washington)
Tomasz Jankowski (NKHS - Northeast)	Chuck Myers (NFI - Northeastern Family Institute)
Todd Bauman (NCSS - Northwest)	

The Management Information System Database Managers at community service provider agencies and institutions worked closely with Department of Mental Health staff throughout the year to ensure the accuracy of and to identify the shortcomings of the data. Even more important, their continuing efforts to ensure accurate and uniform coding of service and client data, to streamline paper flow, and to make their Management Information Systems a useful management tool were essential to the completeness and accuracy of this report. During FY2018, the MIS Database Managers included:

Emily Van De Weert (CSAC)	Deb Hawley (CMC)
Eric Williams (UCS)	Steve Blongy (RMHS)
Ed Giroux (HC)	Warren Sergeant (HCRS)
Troy Metcalf (LCMH)	Shawn Manwaring (WCMH)
Timothy Gould (NKHS)	Kathy Pettengill (NFI)
Chris Kelly (NCSS)	Rebeka Lawrence (Pathways)

LIST OF TABLES

Table	Title	Page
PART 1:	OVERVIEW	1
1-1	Number of Clients Served	3
1-2	Clients Served per 1,000 Age-Specific Population	4
1-3	Age of Clients Served	5
1-4	Gender of Clients Served	6
1-5	Annual Family Income of Clients Served	7
1-6	Responsibility for Fee of Clients Served	8
1-7	ICD-10 Diagnosis of Clients Served	9
1-8	Problems of Clients Served	10
1-9	Length of Stay of Clients Served	11
1-10	Clinical Interventions	12
1-10a	Individual, Family, and Group Therapy	13
1-10b	Medication and Medical Support and Consultation Services	14
1-10c	Clinical Assessment Services	15
1-11	Day Services	16
1-12	Service Planning and Coordination	17
1-13	Community Supports	18
1-14	Employment Services	19
1-15a	Emergency/Crisis Assessment, Support, and Referral	20
1-15b	Emergency/Crisis Beds	21
1-16	Housing and Home Supports	22
1-17	Condition of Clients on Termination of Services	23
PART 2:	COMMUNITY PROGRAMS	25
2-1	Program of Service of Clients Served Each Month	27
2-2	Primary Program Assignment of Clients Served Each Month	28
2-3	Age and Gender of Clients Served	29
2-4	Responsibility for Fee of Clients Served	30
2-5	ICD-10 Diagnosis of Clients Served	31
2-6	Length of Stay of Clients Served	32
2A:	Children's Services Programs	33
2A-1	Age and Gender of Clients Served	35
2A-2	Responsibility for Fee of Clients Served	36
2A-3	ICD-10 Diagnosis of Clients Served	37
2A-4	Length of Stay of Clients Served	38
2A-5	Clinical Interventions	39
2A-5a	Individual, Family, and Group Therapy	40
2A-5b	Medication and Medical Support and Consultation Services	41
2A-5c	Clinical Assessment Services	42
2A-6	Service Planning and Coordination	43
2A-7	Community Supports	44
2A-8a	Emergency/Crisis Assessment, Support, and Referral	45
2A-8b	Emergency/Crisis Beds	46
2A-9	Housing and Home Supports	47
2A-10	Respite Services	48

2B:	Adult Mental Health Outpatient Programs	49
2B-1	Age and Gender of Clients Served	51
2B-2	Responsibility for Fee of Clients Served	52
2B-3	ICD-10 Diagnosis of Clients Served	53
2B-4	Length of Stay of Clients Served	54
2B-5	Clinical Interventions	55
2B-5a	Individual, Family, and Group Therapy	56
2B-5b	Medication and Medical Support and Consultation Services	57
2B-5c	Clinical Assessment Services	58
2B-6	Service Planning and Coordination	59
2B-7	Community Supports	60
2B-8	Emergency/Crisis Assessment, Support, and Referral	61
2C:	Community Rehabilitation and Treatment Programs	63
2C-1	Age and Gender of Clients Served	65
2C-2	Responsibility for Fee of Clients Served	66
2C-3	ICD-10 Diagnosis of Clients Served	67
2C-4	Length of Stay of Clients Served	68
2C-5	Clinical Interventions	69
2C-5a	Individual, Family, and Group Therapy	70
2C-5b	Medication and Medical Support and Consultation Services	71
2C-5c	Clinical Assessment Services	72
2C-6	Day Services	73
2C-7	Service Planning and Coordination	74
2C-8	Community Supports	75
2C-9	Employment Services	76
2C-10a	Emergency/Crisis Assessment, Support, and Referral	77
2C-10b	Emergency/Crisis Beds	78
2C-11	Housing and Home Supports	79
2E:	Emergency Service Programs	81
2E-1	Clinical Interventions	83
2E-2	Service Planning and Coordination	84
2E-3	Community Supports	85
2E-4a	Emergency/Crisis Assessment, Support, and Referral	86
2E-4b	Emergency/Crisis Beds	87
PART 3:	VERMONT PSYCHIATRIC CARE HOSPITAL	89
3-1	Average Daily Census: July 2015 through June 2018	91
3-2	Monthly Utilization	92
3-3	Catchment Area and Utilization	93
3-4	Age and Utilization	94
3-5	Gender and Utilization	95
3-6	ICD-10 Diagnosis and Utilization	96
3-7	Legal Status on Admission and Utilization	97
3-8	Type of Admission and Utilization	98
3-9	Catchment Area and Legal Status of Patients Admitted	99
3-10	Age and Legal Status of Patients Admitted	100
3-11	Gender and Legal Status of Patients Admitted	101
3-12	ICD-10 Diagnosis and Legal Status of Patients Admitted	102
3-13	Type of Admission and Legal Status of Patients Admitted	103

3-14	Catchment Area and Discharge Rate of Patients Admitted	104
3-15	Age and Discharge Rate of Patients Admitted	105
3-16	Gender and Discharge Rate of Patients Admitted	106
3-17	ICD-10 Diagnosis and Discharge Rate of Patients Admitted	107
3-18	Legal Status and Discharge Rate of Patients Admitted	108
3-19	Type of Admission and Discharge Rate of Patients Admitted	109
3-20	Catchment Area and Length of Stay of Patients in Residence at End of Year	110
3-21	Age and Length of Stay of Patients in Residence at End of Year	111
3-22	Gender and Length of Stay of Patients in Residence at End of Year	112
3-23	ICD-10 Diagnosis & Length of Stay of Patients in Residence at End of Year	113
3-24	Legal Status and Length of Stay of Patients in Residence at End of Year	114
3-25	Type of Admission and Length of Stay of Patients in Residence at End of Year	115

PART 4: HISTORICAL OVERVIEW 117

4-1	Primary Program Assignments	119
4-2	Children's Services Programs by Designated Agency	120
4-3	Adult Mental Health Outpatient Programs by Designated Agency	121
4-4	Community Rehabilitation & Treatment Programs by Designated Agency	122

PART 5: NOTES 123

Overview

1.	The Scope of This Report	125
2.	Community Provider Agencies	126
3.	Clients Served	126
4.	Age	128
5.	Income	128
6.	Responsibility for Fee	128
7.	Diagnosis	129
8.	Problems	129
9.	Length of Stay	129

Types of Service

10.	Clinical Interventions	130
11.	Day Services	130
12.	Service Planning and Coordination	130
13.	Community Supports	131
14.	Employment Services	131
15.	Crisis Services	131
16.	Housing and Home Supports	131
17.	Respite Services	132
18.	Condition on Termination	132

Vermont Psychiatric Care Hospital

19.	Admissions and Discharges	132
20.	Legal Status	133
21.	Type of Admission	134
22.	Discharge Rate	134
23.	Length of Stay	134

Part 1: Overview

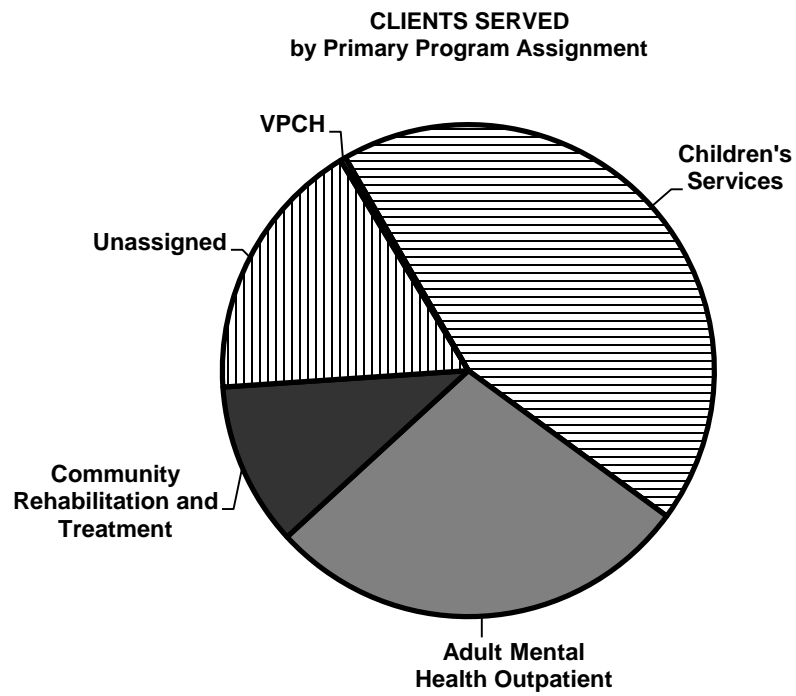


TABLE 1-1
Vermont Agency of Human Services
Department of Mental Health

NUMBER OF CLIENTS SERVED
by Clients' Primary Program Assignment and Designated Agency
Fiscal Year 2018

<u>Designated Agency</u>	<u>Children's Services</u>	<u>Adult MH Outpatient</u>	<u>Community Rehabilitation</u>	<u>Unassigned</u>	<u>VPCH</u>
CSAC (Addison)	981	616	153	37	4
NCSS (Northwest)	1,874	834	225	573	5
HC (Chittenden)	1,981	599	615	1,139	33
LCMH (Lamoille)	401	165	132	233	-
HCRS (Southeast)	1,216	862	378	649	7
NKHS (Northeast)	642	839	227	415	6
CMC (Orange)	590	540	100	246	-
RMHS (Rutland)	982	299	274	592	6
UCS (Bennington)	524	589	142	508	4
WCMH (Washington)	1,085	1,284	335	415	14
Northeastern Family Institute	616	-	-	-	-
Pathways	-	146	47	-	-
<u>Total</u>	10,892	6,773	2,628	4,807	79

See notes 1, 2 and 3.

TABLE 1-2
Vermont Agency of Human Services
Department of Mental Health

CLIENTS SERVED PER 1,000 AGE-SPECIFIC POPULATION
by Clients' Primary Program Assignment and Designated Agency
Fiscal Year 2018

<u>Designated Agency</u>	<u>Children's Services^a</u>	<u>Adult MH Outpatient^b</u>	<u>Community Rehabilitation^b</u>	<u>Unassigned^c</u>	<u>VPCH^b</u>
CSAC (Addison)	157.1	20.6	5.1	1.0	0.1
NCSS (Northwest)	153.1	19.0	5.1	10.2	0.1
HC (Chittenden)	67.8	4.5	4.6	7.0	0.2
LCMH (Lamoille)	63.0	8.2	6.6	8.8	0.0
HCRS (Southeast)	74.6	11.7	5.1	7.2	0.1
NKHS (Northeast)	57.2	16.5	4.5	6.7	0.1
CMC (Orange)	100.2	20.6	3.8	7.7	0.0
RMHS (Rutland)	93.2	6.2	5.6	10.0	0.1
UCS (Bennington)	77.4	20.4	4.9	14.3	0.1
WCMH (Washington)	90.3	24.8	6.5	6.5	0.3
<u>Total</u>	93.2	13.4	5.2	7.7	0.0

^a Rate based on child population (age 0-17)

^b Rate based on adult population (age 18+)

^c Rate based on total population

See note 1, and particularly notes 2 and 3.

TABLE 1-3
Vermont Agency of Human Services
Department of Mental Health

AGE OF CLIENTS SERVED
by Clients' Primary Program Assignment
Fiscal Year 2018

	<u>Children's Services</u>	<u>Adult MH Outpatient</u>	<u>Community Rehabilitation</u>	<u>Unassigned</u>	<u>VPCH</u>
<u>Age</u>					
0-12	58%	0%	-	3%	-
13-19	39%	3%	1%	14%	1%
20-34	3%	33%	17%	36%	30%
35-49	0%	28%	26%	23%	27%
50-64	0%	24%	41%	16%	33%
65+	0%	12%	16%	8%	9%
Total	100%	100%	100%	100%	100%
<u>Age Data Reported</u>					
Clients	10,885	6,753	2,626	4,777	79
Percent within Program	100%	100%	100%	99%	100%
<u>No Age Data</u>					
Clients	7	20	2	30	-
Percent within Program	0%	0%	0%	1%	-
<u>Grand Total</u>	10,892	6,773	2,628	4,807	79

See notes 1, 3 and 4.

TABLE 1-4
Vermont Agency of Human Services
Department of Mental Health

GENDER OF CLIENTS SERVED
by Clients' Primary Program Assignment
Fiscal Year 2018

	<u>Children's Services</u>	<u>Adult MH Outpatient</u>	<u>Community Rehabilitation</u>	<u>Unassigned</u>	<u>VPCH</u>
<u>Gender</u>					
Male	56%	39%	51%	50%	71%
Female	44%	61%	49%	50%	29%
Total	100%	100%	100%	100%	100%
<u>Gender Data Reported</u>					
Clients	10,871	6,761	2,625	4,787	79
Percent within Program	100%	100%	100%	100%	100%
<u>No Gender Data</u>					
Clients	21	12	3	20	-
Percent within Program	0%	0%	0%	0%	-
<u>Grand Total</u>	10,892	6,773	2,628	4,807	79

See notes 1 and 3.

TABLE 1-5
Vermont Agency of Human Services
Department of Mental Health

ANNUAL FAMILY INCOME OF CLIENTS SERVED
by Clients' Primary Program Assignment
Fiscal Year 2018

	<u>Children's Services</u>	<u>Adult Outpatient</u>	<u>Community Rehabilitation</u>	<u>Unassigned</u>	<u>VPCH</u>
<u>Income</u>					
\$ 1 - 9,999	17%	37%	58%	38%	-
\$10,000 - 19,999	21%	26%	29%	24%	-
\$20,000 - 29,999	17%	13%	6%	12%	-
\$30,000 +	44%	24%	6%	25%	-
Total	100%	100%	100%	100%	-
<u>Income Data Reported</u>					
Clients	3,065	2,713	885	481	-
Percent within Program	28%	40%	34%	10%	-
<u>No Income Data</u>					
Clients	7,827	4,060	1,743	4,326	79
Percent within Program	72%	60%	66%	90%	100%
<u>Grand Total</u>	10,892	6,773	2,628	4,807	79

See notes 1, 3 and 5.

TABLE 1-6
Vermont Agency of Human Services
Department of Mental Health

RESPONSIBILITY FOR FEE OF CLIENTS SERVED
by Clients' Primary Program Assignment
Fiscal Year 2018

	<u>Children's Services</u>	<u>Adult MH Outpatient</u>	<u>Community Rehabilitation</u>	<u>Unassigned</u>	<u>VPCH</u>
<u>Responsibility For Fee</u>					
Medicaid	80%	59%	72%	39%	8%
Medicare	0%	21%	52%	11%	49%
Other Insurance	14%	24%	12%	14%	4%
State Agency	4%	7%	23%	4%	-
Non-Insured/Unknown	7%	10%	3%	45%	39%
Total	10,892	6,773	2,628	4,807	79

See notes 1, 3 and especially 6.

TABLE 1-7
Vermont Agency of Human Services
Department of Mental Health

DIAGNOSIS OF CLIENTS SERVED
by Clients' Primary Program Assignment
Fiscal Year 2018

	<u>Children's Services</u>	<u>Adult MH Outpatient</u>	<u>Community Rehabilitation</u>	<u>Unassigned</u>	<u>VPCH</u>
<u>Diagnosis - ICD 10</u>					
Physiological Conditions	0%	1%	1%	1%	0%
Psychoactive Substance Use	2%	21%	32%	26%	3%
Schizophrenia Other Non-Mood Psychotic Disorders	0%	4%	51%	7%	34%
Mood [Affective] Disorders	18%	51%	42%	39%	75%
Anxiety and Other Nonpsychotic Mental Disorders	68%	62%	32%	54%	30%
Behavioral Syndromes	0%	1%	1%	1%	15%
Disorders of Adult Personality and Behavior	1%	7%	18%	3%	-
Intellectual Disabilities	3%	1%	1%	1%	3%
Pervasive and Specific Developmental Disorders	11%	1%	1%	1%	-
Behavioral Emotional Disorders/Childhood Adolescence	30%	6%	3%	3%	-
Unspecified Mental Disorder	0%	1%	0%	0%	-
<u>Diagnostic Data Reported</u>					
Clients	9,181	6,280	2,596	4,403	79
Percent within Program	84%	93%	99%	92%	100%
<u>No Diagnostic Data</u>					
Clients	1,711	493	32	404	-
Percent within Program	16%	7%	1%	8%	-
<u>Grand Total</u>	10,892	6,773	2,628	4,807	79

See notes 1, 3 and 7. Includes all primary and secondary DSM V diagnoses.

TABLE 1-8
Vermont Agency of Human Services
Department of Mental Health

PROBLEMS OF CLIENTS SERVED
by Clients' Primary Program Assignment
Fiscal Year 2018

	<u>Children's Services</u>	<u>Adult MH Outpatient</u>	<u>Community Rehabilitation</u>	<u>Unassigned</u>	<u>VPCH</u>
<u>Problem Area</u>					
Mood Disorders	40%	75%	47%	38%	-
Thought Disorders	5%	12%	32%	9%	-
Eating Disorders	4%	7%	7%	3%	-
Medical Somatic	12%	31%	22%	10%	-
Alcohol Abuse	2%	13%	14%	12%	-
Drug Abuse	4%	15%	12%	11%	-
Suicidal Tendencies	12%	15%	18%	22%	-
Problems in Daily Living	67%	65%	43%	34%	-
Social/Interpersonal	60%	46%	40%	24%	-
Marital/Family	48%	47%	29%	22%	-
Runaway	8%	2%	3%	2%	-
Criminal	3%	12%	9%	6%	-
Victim	15%	26%	15%	7%	-
<u>Problem Data Reported</u>					
Clients	9,496	6,151	1,705	2,513	-
Percent within Program	87%	91%	65%	52%	-
<u>No Problem Data</u>					
Clients	1,396	622	923	2,294	88
Percent within Program	13%	9%	35%	48%	100%
<u>Grand Total</u>	10,892	6,773	2,628	4,807	88

See notes 1, 3 and 8.

TABLE 1-9
Vermont Agency of Human Services
Department of Mental Health

LENGTH OF STAY OF CLIENTS SERVED
by Clients' Primary Program Assignment
Fiscal Year 2018

	<u>Children's Services</u>	<u>Adult MH Outpatient</u>	<u>Community Rehabilitation</u>	<u>Unassigned</u>	<u>VPCH</u>
<u>Year of Admission</u>					
Current Fiscal	40%	46%	6%	83%	68%
Previous Fiscal	23%	20%	7%	9%	24%
3 - 5 Years Earlier	25%	17%	20%	4%	8%
6 - 10 Years Earlier	10%	10%	19%	2%	-
11+ Years Earlier	2%	8%	47%	2%	-
<u>Length of Stay Data Reported</u>					
Clients	10,806	6,729	2,613	4,537	79
Percent within Program	99%	99%	99%	94%	100%
<u>No Length of Stay Data</u>					
Clients	86	44	15	270	-
Percent within Program	1%	1%	1%	6%	-
<u>Grand Total</u>	10,892	6,773	2,628	4,807	79

See notes 1, 3 and 9.

TABLE 1-10
Vermont Agency of Human Services
Department of Mental Health

CLINICAL INTERVENTIONS
by Program of Service
Fiscal Year 2018

	<u>Children's Services</u>	<u>Adult MH Outpatient</u>	<u>Community Rehabilitation</u>	<u>Emergency</u>	<u>VPCH</u>
<u>Total</u>					
Clients Served	11,205	7,846	2,815	7,365	79
Number of Nonresidential Services	637,829	109,303	371,234	30,669	-
<u>Clients Receiving Clinical Interventions</u>					
Clients	6,688	6,826	2,488	717	-
Percent within Program	60%	87%	88%	10%	-
<u>Number of Clinical Interventions</u>					
Services	69,006	68,194	49,098	2,055	-
Percent within Program	11%	62%	13%	7%	-
<u>Clinical Interventions per Client</u>					
Average	10	10	20	3	-

See notes 1, 3 and 10.

TABLE 1-10a
Vermont Agency of Human Services
Department of Mental Health

INDIVIDUAL, FAMILY, AND GROUP THERAPY
by Program of Service
Fiscal Year 2018

	<u>Children's Services</u>	<u>Adult MH Outpatient</u>	<u>Community Rehabilitation</u>	<u>Emergency</u>	<u>VPCH</u>
<u>Total</u>					
Clients Served	11,205	7,846	2,815	7,365	79
Number of Nonresidential Services	637,829	109,303	371,234	30,669	-
<u>Clients Receiving Therapy</u>					
Clients	3,812	4,502	983	181	-
Percent within Program	34%	57%	35%	2%	-
<u>Number of Therapy Sessions</u>					
Services	56,065	50,139	18,858	1,137	-
Percent within Program	9%	46%	5%	4%	-
<u>Therapy Sessions per Client</u>					
Average	15	11	19	6	-

See notes 1, 3 and 10.

TABLE 1-10b
Vermont Agency of Human Services
Department of Mental Health

MEDICATION AND MEDICAL SUPPORT AND CONSULTATION SERVICES
by Program of Service
Fiscal Year 2018

	<u>Children's Services</u>	<u>Adult MH Outpatient</u>	<u>Community Rehabilitation</u>	<u>Emergency</u>	<u>VPCH</u>
<u>Total</u>					
Clients Served	11,205	7,846	2,815	7,365	79
Number of Nonresidential Services	637,829	109,303	371,234	30,669	-
<u>Clients Receiving Medication Services</u>					
Clients	1,352	2,257	2,305	92	-
Percent within Program	12%	29%	82%	1%	-
<u>Number of Medication Services</u>					
Services	6,342	14,032	29,547	288	-
Percent within Program	1%	13%	8%	1%	-
<u>Medication Services per Client</u>					
Average	5	6	13	3	-

See notes 1, 3 and 10.

TABLE 1-10c
Vermont Agency of Human Services
Department of Mental Health

CLINICAL ASSESSMENT SERVICES
by Program of Service
Fiscal Year 2018

	<u>Children's Services</u>	<u>Adult MH Outpatient</u>	<u>Community Rehabilitation</u>	<u>Emergency</u>	<u>VPCH</u>
<u>Total</u>					
Clients Served	11,205	7,846	2,815	3,929	79
Number of Nonresidential Services	637,829	109,303	371,234	624,264	-
<u>Clients Receiving Clinical Assessment</u>					
Clients	4,389	3,455	625	382	-
Percent within Program	39%	44%	22%	10%	-
<u>Number of Clinical Assessments</u>					
Services	6,599	4,023	693	1,327	-
Percent within Program	1%	4%	0%	0%	-
<u>Clinical Assessments per Client</u>					
Average	2	1	1	3	-

See notes 1, 3 and 10.

TABLE 1-11
Vermont Agency of Human Services
Department of Mental Health

DAY SERVICES
by Program of Service
Fiscal Year 2018

	<u>Children's Services</u>	<u>Adult MH Outpatient</u>	<u>Community Rehabilitation</u>	<u>Emergency</u>	<u>VPCH</u>
<u>Total</u>					
Clients Served	11,205	7,846	2,815	7,365	79
Number of Nonresidential Services	637,829	109,303	371,234	30,669	-
<u>Clients Receiving Day Services</u>					
Clients	-	11	483	-	-
Percent within Program	-	0%	17%	-	-
<u>Number of Day Services</u>					
Services	-	63	21,960	-	-
Percent within Program	-	0%	6%	-	-
<u>Day Services per Client</u>					
Average	-	6	45	-	-

See notes 1, 3 and 11.

TABLE 1-12
Vermont Agency of Human Services
Department of Mental Health

SERVICE PLANNING AND COORDINATION
by Program of Service
Fiscal Year 2018

	<u>Children's Services</u>	<u>Adult MH Outpatient</u>	<u>Community Rehabilitation</u>	<u>Emergency</u>	<u>VPCH</u>
<u>Total</u>					
Clients Served	11,205	7,846	2,815	7,365	79
Number of Nonresidential Services	637,829	109,303	371,234	30,669	-
<u>Clients Receiving Service Planning and Coordination Services</u>					
Clients	7,491	2,012	2,537	600	-
Percent within Program	67%	26%	90%	8%	-
<u>Service Planning and Coordination Services</u>					
Services	130,797	13,485	69,959	1,453	-
Percent within Program	21%	12%	19%	5%	-
<u>Service Planning and Coordination Services per Client</u>					
Average	17	7	28	2	-

See notes 1, 3 and 12.

TABLE 1-13
Vermont Agency of Human Services
Department of Mental Health

COMMUNITY SUPPORTS
by Program of Service
Fiscal Year 2018

	<u>Children's Services</u>	<u>Adult MH Outpatient</u>	<u>Community Rehabilitation</u>	<u>Emergency</u>	<u>VPCH</u>
<u>Total</u>					
Clients Served	11,205	7,846	2,815	7,365	79
Number of Nonresidential Services	637,829	109,303	371,234	30,669	-
<u>Clients Receiving Community Supports</u>					
Clients	8,344	2,914	2,639	1,121	-
Percent within Program	74%	37%	94%	15%	-
<u>Number of Community Supports</u>					
Services	429,242	27,230	208,179	6,096	-
Percent within Program	67%	25%	56%	20%	-
<u>Community Supports per Client</u>					
Average	51	9	79	5	-

See notes 1, 3 and 13.

TABLE 1-14
Vermont Agency of Human Services
Department of Mental Health

EMPLOYMENT SERVICES
by Program of Service
Fiscal Year 2018

	<u>Children's Services</u>	<u>Adult MH Outpatient</u>	<u>Community Rehabilitation</u>	<u>Emergency</u>	<u>VPCH</u>
<u>Total</u>					
Clients Served	11,205	7,846	2,815	7,365	79
Number of Nonresidential Services	637,829	109,303	371,234	30,669	-
<u>Clients Receiving Employment Services</u>					
Clients	219	4	716	-	-
Percent within Program	2%	0%	25%	-	-
<u>Number of Employment Services</u>					
Services	2,334	4	13,059	-	-
Percent within Program	0%	0%	4%	-	-
<u>Employment Services per Client</u>					
Average	11	1	18	-	-

See notes 1, 3 and 14.

TABLE 1-15a
Vermont Agency of Human Services
Department of Mental Health

EMERGENCY/CRISIS ASSESSMENT, SUPPORT AND REFERRAL
by Program of Service
Fiscal Year 2018

	<u>Children's Services</u>	<u>Adult MH Outpatient</u>	<u>Community Rehabilitation</u>	<u>Emergency</u>	<u>VPCH</u>
<u>Total</u>					
Clients Served	11,205	7,846	2,815	7,365	79
Number of Nonresidential Services	637,829	109,303	371,234	30,669	-
<u>Clients Receiving Emergency/Crisis Services</u>					
Clients	1,277	140	697	6,308	-
Percent within Program	11%	2%	25%	86%	-
<u>Number of Emergency/Crisis Services</u>					
Services	3,111	153	5,410	21,065	-
Percent within Program	0%	0%	1%	69%	-
<u>Emergency/Crisis Services per Client</u>					
Average	2	1	8	3	-

See notes 1, 3 and 15.

TABLE 1-15b
Vermont Agency of Human Services
Department of Mental Health

EMERGENCY/CRISIS BEDS
by Program of Service
Fiscal Year 2018

	<u>Children's Services</u>	<u>Adult MH Outpatient</u>	<u>Community Rehabilitation</u>	<u>Emergency</u>	<u>VPCH</u>
<u>Total</u>					
Clients Served	11,205	7,846	2,815	7,365	79
<u>Clients Receiving Crisis Emergency Beds</u>					
Clients	309	57	355	229	-
Percent within Program	3%	1%	13%	3%	-
<u>Days of Crisis Emergency Bed Services</u>					
Number	3,344	256	7,761	2,412	-
<u>Emergency Bed Services Days per Client</u>					
Average	11	4	22	11	-

See notes 1, 3 and 15.

TABLE 1-16
Vermont Agency of Human Services
Department of Mental Health

HOUSING AND HOME SUPPORTS
by Program of Service
Fiscal Year 2018

	<u>Children's Services</u>	<u>Adult MH Outpatient</u>	<u>Community Rehabilitation</u>	<u>Emergency</u>	<u>VPCH</u>
<u>Total</u>					
Clients Served	11,205	7,846	2,815	7,365	79
<u>Clients Receiving Housing Services</u>					
Number	189	23	245	42	79
Percent within Program	2%	0%	9%	1%	100%
<u>Days of Housing Services</u>					
Number	35,008	2,399	54,342	7,281	8,962
<u>Housing Service Days per Client</u>					
Average	185	104	222	173	113

See notes 1, 3 and 16.

TABLE 1-17
Vermont Agency of Human Services
Department of Mental Health

CONDITION OF CLIENTS ON TERMINATION OF SERVICES
by Clients' Primary Program Assignment
Fiscal Year 2018

	<u>Children's Services</u>	<u>Adult MH Outpatient</u>	<u>Community Rehabilitation</u>	<u>Unassigned</u>	<u>VPCH</u>
<u>Condition on Termination</u>					
Improved	74%	53%	37%	6%	-
Unchanged	24%	43%	55%	94%	-
Worse	2%	4%	8%	0%	-
Total	100%	100%	100%	100%	-
<u>Condition on Termination Data Reported</u>					
Number	1,165	454	91	629	-
Percent of Discharged Clients	81%	69%	67%	77%	-
<u>No Condition on Termination Data</u>					
Number	282	207	44	186	
Percent of Discharged Clients	19%	31%	33%	23%	-
<u>Total Discharges</u>					
Number	1,447	661	135	815	-
Discharge Rate (% of all Clients)	13%	10%	5%	17%	-

See notes 1, 3 and especially 18.

Part 2: Community Programs

COMMUNITY PROGRAMS
Total Caseload by Agency
FY2018

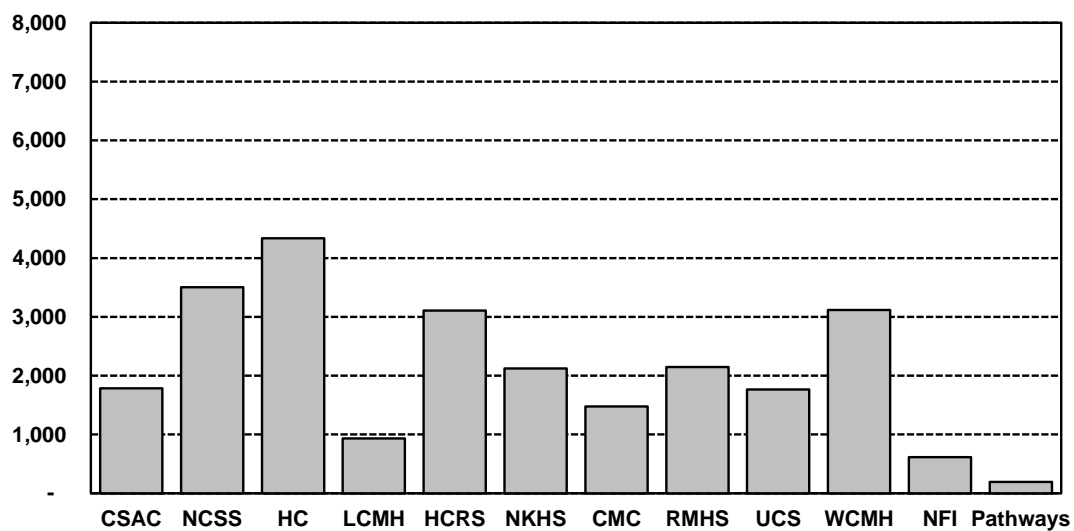


TABLE 2-1
Vermont Agency of Human Services
Department of Mental Health

PROGRAM OF SERVICE OF CLIENTS
Who Were Served Each Month by
Designated Agencies
Fiscal Year 2018

<u>Month</u>	<u>Program of Service</u>				
	<u>Children's Services</u>	<u>Adult MH Outpatient</u>	<u>Community Rehabilitation</u>	<u>Emergency Services</u>	<u>Total</u>
July	4,988	2,920	2,311	954	11,173
August	5,311	3,011	2,343	939	11,604
September	6,089	2,855	2,334	1,004	12,282
October	6,295	3,029	2,355	1,026	12,705
November	6,460	2,889	2,335	997	12,681
December	6,359	2,633	2,311	917	12,220
January	6,814	3,004	2,330	976	13,124
February	6,668	2,950	2,336	949	12,903
March	6,899	3,104	2,366	1,011	13,380
April	6,907	3,167	2,362	1,020	13,456
May	6,880	3,120	2,340	1,030	13,370
June	6,475	3,111	2,322	1,002	12,910
Monthly Average	6,345	2,983	2,337	985	12,651

Clients served by more than one program of service during the fiscal year have been counted toward the number of clients served by each program, but only once toward the overall total.

See notes 1 and 3.

TABLE 2-2
Vermont Agency of Human Services
Department of Mental Health

PRIMARY PROGRAM ASSIGNMENT OF CLIENTS

Who Were Served Each Month by
Designated Agencies
Fiscal Year 2018

Primary Program Assignment					
<u>Month</u>	<u>Children's Services</u>	<u>Adult MH Outpatient</u>	<u>Community Rehabilitation</u>	<u>Unassigned</u>	<u>Total</u>
July	4,941	2,918	2,274	2,773	12,906
August	5,254	3,034	2,311	2,806	13,405
September	6,023	2,883	2,297	2,800	14,003
October	6,239	3,015	2,311	2,783	14,348
November	6,386	2,892	2,289	2,770	14,337
December	6,278	2,670	2,256	2,744	13,948
January	6,733	2,995	2,282	2,817	14,827
February	6,572	2,944	2,273	2,797	14,586
March	6,777	3,108	2,303	2,804	14,992
April	6,777	3,146	2,290	2,777	14,990
May	6,778	3,107	2,267	2,806	14,958
June	6,366	3,082	2,250	2,775	14,473
Monthly Average	6,260	2,983	2,284	2,788	14,314

See notes 1 and 3.

TABLE 2-3
Vermont Agency of Human Services
Department of Mental Health

AGE AND GENDER OF CLIENTS SERVED

Community Service Providers

Designated Agencies

Fiscal Year 2018

	Clients Served	Age							Gender	
		0 - 6	7 - 12	13 - 19	20 - 34	35 - 49	50 - 64	65 +	Male	Female
OVERALL	25,100	9%	16%	21%	19%	15%	14%	6%	50%	50%
<u>Designated Agency</u>										
CSAC (Addison)	1,787	15%	18%	22%	17%	8%	13%	6%	48%	52%
NCSS (Northwest)	3,506	17%	20%	20%	15%	12%	10%	5%	51%	49%
HC (Chittenden)	4,334	9%	18%	23%	19%	14%	11%	6%	53%	47%
LCMH (Lamoille)	931	4%	18%	24%	18%	16%	14%	5%	49%	51%
HCRS (Southeast)	3,105	7%	15%	18%	22%	17%	14%	6%	50%	50%
NKHS (Northeast)	2,123	5%	14%	18%	18%	18%	20%	7%	48%	52%
CMC (Orange)	1,476	5%	16%	21%	21%	15%	16%	6%	47%	53%
RMHS (Rutland)	2,147	13%	15%	20%	17%	13%	15%	8%	54%	46%
UCS (Bennington)	1,763	3%	13%	20%	20%	18%	17%	9%	45%	55%
WCMH (Washington)	3,119	6%	14%	16%	22%	18%	15%	8%	49%	51%
Northeastern Family Institute	616	26%	25%	49%	-	-	-	-	43%	57%
Pathways	193	-	-	0%	19%	35%	39%	7%	59%	41%

See notes 2, 3 and 4.

TABLE 2-4
Vermont Agency of Human Services
Department of Mental Health

RESPONSIBILITY FOR FEE OF CLIENTS SERVED

Designated Agencies
Fiscal Year 2018

	Total Clients Served	Responsibility for Fee				
		Medicaid	Medicare	Other Insurance	State Agency	Unknown/ Uninsured
OVERALL	25,100	66%	13%	16%	6%	15%
<u>Designated Agency</u>						
CSAC (Addison)	1,787	53%	14%	21%	0%	12%
NCSS (Northwest)	3,506	56%	11%	20%	-	13%
HC (Chittenden)	4,334	61%	11%	15%	1%	28%
LCMH (Lamoille)	931	68%	12%	11%	-	23%
HCRS (Southeast)	3,105	72%	17%	14%	13%	12%
NKHS (Northeast)	2,123	77%	7%	12%	-	13%
CMC (Orange)	1,476	61%	10%	18%	5%	16%
RMHS (Rutland)	2,147	81%	21%	22%	6%	4%
UCS (Bennington)	1,763	62%	19%	18%	16%	12%
WCMH (Washington)	3,119	73%	18%	16%	11%	11%
Northeastern Family Institute	616	41%	-	7%	50%	4%
Pathways	193	100%	-	-	-	-

See notes 2, 3 and especially 6.

TABLE 2-5
Vermont Agency of Human Services
Department of Mental Health

DIAGNOSIS OF CLIENTS SERVED

Designated Agencies
Fiscal Year 2018

<u>ICD 10</u>	<i>Total Clients Served</i>	<i>No Dx Data</i>	<i>Physiological Conditions</i>	<i>Psychoactive Substance Use</i>	<i>Schizophrenia Non-Mood Psych Disorders</i>	<i>Mood Disorders</i>	<i>Anxiety Other Nonpsy Mental Disorders</i>	<i>Behavioral Syndromes</i>	<i>Disorders of Adult Personality and Behavior</i>	<i>Intellectual Disabilities</i>	<i>Pervasive Specific Dev Disorders</i>	<i>Beh Emotion Disorder/Child Adol</i>	<i>Unspecified Mental Disorder</i>	<u>Reported N</u>
OVERALL	25,100	11%	1%	16%	9%	34%	59%	1%	5%	2%	5%	15%	0%	22,460
<u>Designated Agency</u>														
CSAC (Addison)	1,787	11%	1%	8%	5%	35%	57%	1%	2%	2%	8%	12%	0%	1,596
NCSS (Northwest)	3,506	18%	1%	12%	4%	21%	68%	1%	6%	2%	6%	16%	0%	2,863
HC (Chittenden)	4,334	5%	1%	20%	10%	29%	59%	1%	4%	2%	7%	16%	0%	4,130
LCMH (Lamoille)	931	0%	1%	11%	6%	25%	75%	1%	3%	2%	5%	12%	0%	931
HCRS (Southeast)	3,105	10%	1%	18%	11%	48%	50%	0%	6%	2%	4%	13%	0%	2,790
NKHS (Northeast)	2,123	2%	1%	18%	11%	36%	65%	1%	9%	2%	4%	18%	0%	2,075
CMC (Orange)	1,476	37%	1%	6%	8%	20%	54%	0%	8%	1%	2%	9%	0%	937
RMHS (Rutland)	2,147	8%	1%	21%	10%	43%	51%	0%	6%	2%	3%	17%	4%	1,983
UCS (Bennington)	1,763	3%	2%	20%	6%	40%	64%	1%	6%	1%	3%	15%	0%	1,706
WCMH (Washington)	3,119	5%	1%	15%	9%	35%	59%	0%	4%	1%	3%	12%	0%	2,949
Northeastern Family Institute	616	50%	0%	6%	2%	43%	66%	2%	2%	0%	7%	30%	0%	307
Pathways	193	0%	1%	1%	21%	36%	35%	0%	3%	0%	0%	4%	0%	193

As clients may have as many as four diagnoses reported, diagnostic groups do not represent an unduplicated count of clients served.

See notes 2, 3 and 7.

TABLE 2-6
Vermont Agency of Human Services
Department of Mental Health

LENGTH OF STAY OF CLIENTS SERVED

Designated Agencies
Fiscal Year 2018

	Total Clients Served	No Data	Year of Admission					Reported N
			Current Fiscal Year	Previous Fiscal Year	3 - 5 Years Earlier	6 - 10 Years Earlier	11+ Years Earlier	
OVERALL	25,100	2%	46%	18%	18%	9%	9%	24,685
<u>Designated Agency</u>								
CSAC (Addison)	1,787	0%	30%	19%	24%	14%	13%	1,782
NCSS (Northwest)	3,506	2%	49%	19%	16%	7%	9%	3,433
HC (Chittenden)	4,334	0%	45%	17%	18%	11%	9%	4,330
LCMH (Lamoille)	931	0%	47%	16%	25%	11%	1%	929
HCRS (Southeast)	3,105	0%	51%	17%	16%	7%	8%	3,096
NKHS (Northeast)	2,123	0%	32%	15%	20%	19%	14%	2,113
CMC (Orange)	1,476	16%	38%	20%	22%	13%	7%	1,244
RMHS (Rutland)	2,147	2%	57%	17%	14%	5%	6%	2,110
UCS (Bennington)	1,763	1%	55%	18%	12%	6%	9%	1,744
WCMH (Washington)	3,119	0%	45%	21%	19%	7%	8%	3,108
Northeastern Family Institute	616	2%	67%	16%	14%	4%	0%	603
Pathways	193	-	1%	2%	96%	1%	-	193

See notes 2, 3 and 9.

2A: Children's Services Programs

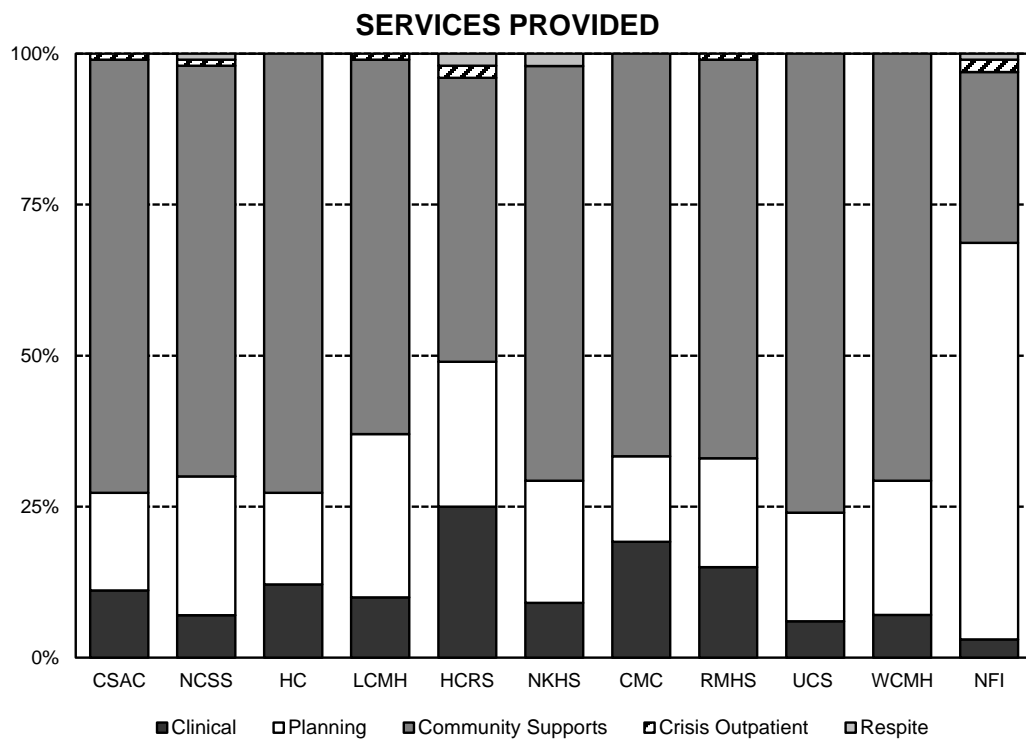


TABLE 2A-1
Vermont Agency of Human Services
Department of Mental Health
CHILDREN'S SERVICES PROGRAMS

AGE AND GENDER OF CLIENTS SERVED

Designated Agencies
Fiscal Year 2018

	Clients Served	Age							Gender	
		<u>0 - 6</u>	<u>7 - 12</u>	<u>13 - 19</u>	<u>20 - 34</u>	<u>35 - 49</u>	<u>50 - 64</u>	<u>65 +</u>	<u>Male</u>	<u>Female</u>
OVERALL	10,892	21%	37%	39%	3%	-	-	-	56%	44%
<u>Designated Agency</u>										
CSAC (Addison)	981	25%	33%	38%	4%	-	-	-	53%	47%
NCSS (Northwest)	1,874	31%	37%	30%	2%	-	-	-	59%	41%
HC (Chittenden)	1,981	19%	37%	40%	3%	1%	-	-	57%	43%
LCMH (Lamoille)	401	9%	41%	49%	1%	-	-	-	59%	41%
HCRS (Southeast)	1,216	19%	39%	40%	2%	-	-	-	54%	46%
NKHS (Northeast)	642	17%	40%	40%	3%	-	-	-	61%	39%
CMC (Orange)	590	12%	37%	44%	7%	-	-	-	52%	48%
RMHS (Rutland)	982	28%	32%	38%	2%	-	-	-	58%	42%
UCS (Bennington)	524	10%	41%	47%	2%	-	-	-	51%	49%
WCMH (Washington)	1,085	17%	40%	41%	2%	-	-	-	58%	42%
Northeastern Family Institute	616	26%	25%	49%	-	-	-	-	43%	57%

See notes 2, 3 and 4.

TABLE 2A-2
Vermont Agency of Human Services
Department of Mental Health
CHILDREN'S SERVICES PROGRAMS

RESPONSIBILITY FOR FEE OF CLIENTS SERVED

Designated Agencies
Fiscal Year 2018

	Total <u>Clients Served</u>	<u>Responsibility for Fee</u>				
		<u>Medicaid</u>	<u>Medicare</u>	<u>Other Insurance</u>	<u>State Agency</u>	<u>Unknown/ Uninsured</u>
OVERALL	10,892	80%	0%	14%	4%	7%
<u>Designated Agency</u>						
CSAC (Addison)	981	71%	-	17%	0%	13%
NCSS (Northwest)	1,874	71%	-	18%	-	11%
HC (Chittenden)	1,981	84%	0%	20%	2%	3%
LCMH (Lamoille)	401	79%	-	12%	-	16%
HCRS (Southeast)	1,216	86%	0%	10%	0%	9%
NKHS (Northeast)	642	94%	-	4%	-	4%
CMC (Orange)	590	78%	-	15%	-	9%
RMHS (Rutland)	982	92%	0%	14%	0%	2%
UCS (Bennington)	524	89%	0%	9%	0%	5%
WCMH (Washington)	1,085	88%	0%	12%	2%	4%
Northeastern Family Institute	616	41%	-	7%	50%	4%

See notes 2, 3 and especially 6.

TABLE 2A-3
Vermont Agency of Human Services
Department of Mental Health
CHILDREN'S SERVICES PROGRAMS

DIAGNOSIS OF CLIENTS SERVED

Designated Agencies

Fiscal Year 2018

ICD 10	Total Clients Served	No Dx Data	Physiological Conditions	Psychotropic Substance Use	Schizophrenia Non-Mood Psych Disorders	Mood Disorders	Anxiety Other Nonpsy Mental Disorders	Behavioral Syndromes	Disorders of Adult Personality and Behavior	Intellectual Disabilities	Pervasive Specific Dev Disorders	Beh Emotion Disorders/Child Adol	Unspecified Mental Disorder	Reported N
OVERALL	10,892	16%	-	2%	-	18%	68%	-	1%	3%	11%	30%	-	9,181
<u>Designated Agency</u>														
CSAC (Addison)	981	18%	-	4%	-	12%	65%	-	1%	3%	15%	20%	-	802
NCSS (Northwest)	1,874	23%	1%	3%	-	8%	70%	-	1%	2%	12%	30%	-	1,449
HC (Chittenden)	1,981	8%	-	4%	-	16%	71%	-	1%	5%	15%	31%	-	1,820
LCMH (Lamoille)	401	0%	1%	1%	-	12%	79%	-	2%	3%	11%	21%	-	401
HCRS (Southeast)	1,216	16%	-	2%	1%	34%	60%	-	2%	4%	9%	32%	-	1,018
NKHS (Northeast)	642	5%	-	1%	-	10%	66%	-	1%	2%	12%	34%	-	608
CMC (Orange)	590	33%	-	1%	-	9%	66%	-	1%	2%	3%	19%	-	396
RMHS (Rutland)	982	16%	-	2%	-	31%	64%	-	4%	3%	6%	38%	-	826
UCS (Bennington)	524	5%	1%	1%	-	16%	67%	-	2%	1%	6%	37%	-	499
WCMH (Washington)	1,085	3%	-	1%	-	16%	71%	-	1%	2%	8%	25%	-	1,055
Northeastern Family Institute	616	50%	-	6%	2%	43%	66%	2%	2%	-	7%	30%	-	307

As clients may have as many as four diagnoses reported, diagnostic groups do not represent an unduplicated count of clients served.

See notes 2, 3 and 7.

TABLE 2A-4
Vermont Agency of Human Services
Department of Mental Health
CHILDREN'S SERVICES PROGRAMS

LENGTH OF STAY OF CLIENTS SERVED

Designated Agencies

Fiscal Year 2018

	Total Clients Served	No Data	Year of Admission					Reported N
			Current Fiscal Year	Previous Fiscal Year	3 - 5 Years Earlier	6 - 10 Years Earlier	11+ Years Earlier	
OVERALL	10,892	1%	40%	23%	24%	10%	2%	10,806
<u>Designated Agency</u>								
CSAC (Addison)	981	0%	26%	23%	29%	17%	4%	979
NCSS (Northwest)	1,874	2%	45%	23%	22%	7%	3%	1,829
HC (Chittenden)	1,981	0%	30%	20%	29%	15%	4%	1,978
LCMH (Lamoille)	401	0%	46%	20%	27%	7%	0%	400
HCRS (Southeast)	1,216	0%	42%	23%	23%	10%	3%	1,212
NKHS (Northeast)	642	1%	32%	21%	29%	15%	3%	638
CMC (Orange)	590	1%	40%	22%	27%	9%	1%	587
RMHS (Rutland)	982	1%	43%	27%	22%	6%	1%	975
UCS (Bennington)	524	0%	46%	27%	19%	7%	1%	523
WCMH (Washington)	1,085	0%	43%	27%	23%	6%	0%	1,082
Northeastern Family Institute	616	2%	67%	16%	14%	4%	0%	603

See notes 2, 3 and 9.

TABLE 2A-5
Vermont Agency of Human Services
Department of Mental Health
CHILDREN'S SERVICES PROGRAMS

CLINICAL INTERVENTIONS

Designated Agencies
Fiscal Year 2018

	<u>Total Clients Served</u>	<u>Clients Receiving Clinical Interventions Number</u>	<u>Percent</u>	<u>Number of Clinical Interventions</u>	<u>Services as Percentage of all Children's Non- Residential Services</u>	<u>Clinical Interventions Per Client</u>
OVERALL	11,205	6,688	60%	69,006	11%	10
<u>Designated Agency</u>						
CSAC (Addison)	875	536	61%	5,205	11%	10
NCSS (Northwest)	1,899	1,294	68%	7,096	7%	5
HC (Chittenden)	2,189	1,456	67%	19,769	12%	14
LCMH (Lamoille)	411	248	60%	2,978	10%	12
HCRS (Southeast)	1,259	791	63%	9,871	25%	12
NKHS (Northeast)	715	310	43%	2,882	9%	9
CMC (Orange)	588	500	85%	5,608	19%	11
RMHS (Rutland)	995	577	58%	5,367	15%	9
UCS (Bennington)	533	299	56%	1,205	6%	4
WCMH (Washington)	1,125	643	57%	8,567	7%	13
Northeastern Family Institute	616	34	6%	458	3%	13

See notes 2, 3 and 10.

TABLE 2A-5a
Vermont Agency of Human Services
Department of Mental Health
CHILDREN'S SERVICES PROGRAMS

INDIVIDUAL, FAMILY, AND GROUP THERAPY

Designated Agencies

Fiscal Year 2018

	<u>Total Clients Served</u>	<u>Clients Receiving Therapy Number</u>	<u>Percent</u>	<u>Number of Therapy Sessions</u>	<u>Services as Percentage of all Children's Non- Residential Services</u>	<u>Therapy Sessions Per Client</u>
OVERALL	11,205	3,812	34%	56,065	9%	15
<u>Designated Agency</u>						
CSAC (Addison)	875	410	47%	4,512	9%	11
NCSS (Northwest)	1,899	516	27%	5,083	5%	10
HC (Chittenden)	2,189	928	42%	17,811	11%	19
LCMH (Lamoille)	411	126	31%	2,192	8%	17
HCRS (Southeast)	1,259	599	48%	8,379	21%	14
NKHS (Northeast)	715	182	25%	1,995	6%	11
CMC (Orange)	588	399	68%	5,042	17%	13
RMHS (Rutland)	995	290	29%	3,614	10%	12
UCS (Bennington)	533	65	12%	727	3%	11
WCMH (Washington)	1,125	274	24%	6,295	5%	23
Northeastern Family Institute	616	23	4%	415	3%	18

See notes 2, 3 and 10.

TABLE 2A-5b
Vermont Agency of Human Services
Department of Mental Health
CHILDREN'S SERVICES PROGRAMS

MEDICATION AND MEDICAL SUPPORT AND CONSULTATION SERVICES

Designated Agencies
Fiscal Year 2018

	<u>Total Clients Served</u>	<u>Clients Receiving Medication Services Number</u>	<u>Percent</u>	<u>Number of Medication Services</u>	<u>Services as Percentage of all Children's Non- Residential Services</u>	<u>Medication Services Per Client</u>
OVERALL	11,205	1,352	12%	6,342	1%	5
<u>Designated Agency</u>						
CSAC (Addison)	875	101	12%	306	1%	3
NCSS (Northwest)	1,899	205	11%	846	1%	4
HC (Chittenden)	2,189	186	8%	559	0%	3
LCMH (Lamoille)	411	59	14%	219	1%	4
HCRS (Southeast)	1,259	181	14%	1,002	3%	6
NKHS (Northeast)	715	109	15%	674	2%	6
CMC (Orange)	588	83	14%	226	1%	3
RMHS (Rutland)	995	115	12%	425	1%	4
UCS (Bennington)	533	63	12%	234	1%	4
WCMH (Washington)	1,125	243	22%	1,821	1%	7
Northeastern Family Institute	616	7	1%	30	0%	4

See notes 2, 3 and 10.

TABLE 2A-5c
Vermont Agency of Human Services
Department of Mental Health
CHILDREN'S SERVICES PROGRAMS

CLINICAL ASSESSMENT SERVICES

Designated Agencies

Fiscal Year 2018

	<u>Total Clients Served</u>	<u>Clients Receiving Clinical Assessment Number</u>	<u>Percent</u>	<u>Number of Clinical Assessments</u>	<u>Services as Percentage of all Children's Non- Residential Services</u>	<u>Clinical Assessment Per Client</u>
OVERALL	11,205	4,389	39%	6,599	1%	2
<u>Designated Agency</u>						
CSAC (Addison)	875	269	31%	387	1%	1
NCSS (Northwest)	1,899	1,072	56%	1,167	1%	1
HC (Chittenden)	2,189	937	43%	1,399	1%	1
LCMH (Lamoille)	411	175	43%	567	2%	3
HCRS (Southeast)	1,259	440	35%	490	1%	1
NKHS (Northeast)	715	175	24%	213	1%	1
CMC (Orange)	588	319	54%	340	1%	1
RMHS (Rutland)	995	363	36%	1,328	4%	4
UCS (Bennington)	533	228	43%	244	1%	1
WCMH (Washington)	1,125	401	36%	451	0%	1
Northeastern Family Institute	616	10	2%	13	0%	1

See notes 2, 3 and 10.

TABLE 2A-6
Vermont Agency of Human Services
Department of Mental Health
CHILDREN'S SERVICES PROGRAMS

SERVICE PLANNING AND COORDINATION

Designated Agencies
Fiscal Year 2018

	<u>Total Clients Served</u>	<u>Clients Receiving Planning Services Number</u>	<u>Percent</u>	<u>Number of Planning Services</u>	<u>Services as Percentage of all Children's Non- Residential Services</u>	<u>Planning Services Per Client</u>
OVERALL	11,205	7,491	67%	130,797	21%	17
<u>Designated Agency</u>						
CSAC (Addison)	875	444	51%	8,069	16%	18
NCSS (Northwest)	1,899	1,211	64%	22,361	23%	18
HC (Chittenden)	2,189	1,473	67%	24,488	15%	17
LCMH (Lamoille)	411	282	69%	7,671	27%	27
HCRS (Southeast)	1,259	843	67%	9,582	24%	11
NKHS (Northeast)	715	514	72%	6,829	20%	13
CMC (Orange)	588	439	75%	4,039	14%	9
RMHS (Rutland)	995	731	73%	6,444	18%	9
UCS (Bennington)	533	361	68%	3,739	18%	10
WCMH (Washington)	1,125	797	71%	27,603	22%	35
Northeastern Family Institute	616	396	64%	9,972	65%	25

See notes 2, 3 and 12.

TABLE 2A-7
Vermont Agency of Human Services
Department of Mental Health
CHILDREN'S SERVICES PROGRAMS

COMMUNITY SUPPORTS

Designated Agencies

Fiscal Year 2018

	<u>Total Clients Served</u>	<u>Clients Receiving Support Services Number</u>	<u>Percent</u>	<u>Number of Community Support Services</u>	<u>Services as Percentage of all Children's Non- Residential Services</u>	<u>Support Services Per Client</u>
OVERALL	11,205	8,344	74%	429,242	67%	51
<u>Designated Agency</u>						
CSAC (Addison)	875	625	71%	35,001	71%	56
NCSS (Northwest)	1,899	1,441	76%	67,707	68%	47
HC (Chittenden)	2,189	1,655	76%	117,548	72%	71
LCMH (Lamoille)	411	315	77%	17,538	62%	56
HCRS (Southeast)	1,259	917	73%	18,400	47%	20
NKHS (Northeast)	715	608	85%	22,866	68%	38
CMC (Orange)	588	537	91%	19,212	66%	36
RMHS (Rutland)	995	767	77%	24,158	66%	31
UCS (Bennington)	533	453	85%	16,049	76%	35
WCMH (Washington)	1,125	943	84%	86,552	70%	92
Northeastern Family Institute	616	83	13%	4,211	28%	51

See notes 2, 3 and 13.

TABLE 2A-8a
Vermont Agency of Human Services
Department of Mental Health
CHILDREN'S SERVICES PROGRAMS

EMERGENCY/CRISIS ASSESSMENT, SUPPORT AND REFERRAL

Designated Agencies

Fiscal Year 2018

	<u>Total Clients Served</u>	<u>Clients Receiving Emerg./Crisis Services Number</u>	<u>Percent</u>	<u>Number of Emerg./Crisis Services</u>	<u>Services as Percentage of all Children's Non- Residential Services</u>	<u>Emerg./Crisis Services Per Client</u>
OVERALL	11,205	1,277	11%	3,111	0%	2
<u>Designated Agency</u>						
CSAC (Addison)	875	123	14%	293	1%	2
NCSS (Northwest)	1,899	254	13%	600	1%	2
HC (Chittenden)	2,189	-	-	-	-	-
LCMH (Lamoille)	411	115	28%	221	1%	2
HCRS (Southeast)	1,259	315	25%	663	2%	2
NKHS (Northeast)	715	32	4%	49	0%	2
CMC (Orange)	588	1	0%	-	0%	1
RMHS (Rutland)	995	183	18%	523	1%	3
UCS (Bennington)	533	53	10%	101	0%	2
WCMH (Washington)	1,125	166	15%	280	0%	2
Northeastern Family Institute	616	35	6%	380	2%	11

See notes 2, 3 and 15.

TABLE 2A-8b
Vermont Agency of Human Services
Department of Mental Health
CHILDREN'S SERVICES PROGRAMS

EMERGENCY/CRISIS BEDS

Designated Agencies
Fiscal Year 2018

	<u>Total Clients Served</u>	<u>Clients Receiving Emerg./Crisis Bed Services</u>		<u>Days of Emerg./Crisis Bed Services</u>	<u>Emergency/Crisis Bed Days Per Client</u>
		<u>Number</u>	<u>Percent</u>		
OVERALL	11,205	309	3%	3,344	11
<u>Designated Agency</u>					
CSAC (Addison)	875	-	-	-	-
NCSS (Northwest)	1,899	-	-	-	-
HC (Chittenden)	2,189	115	5%	1,348	12
LCMH (Lamoille)	411	-	-	-	-
HCRS (Southeast)	1,259	-	-	-	-
NKHS (Northeast)	715	-	-	-	-
CMC (Orange)	588	-	-	-	-
RMHS (Rutland)	995	-	-	-	-
UCS (Bennington)	533	-	-	-	-
WCMH (Washington)	1,125	-	-	-	-
Northeastern Family Institute	616	194	31%	1,996	10

See notes 2, 3 and 15.

TABLE 2A-9
Vermont Agency of Human Services
Department of Mental Health
CHILDREN'S SERVICES PROGRAMS

HOUSING AND HOME SUPPORTS

Designated Agencies
Fiscal Year 2018

	<u>Total Clients Served</u>	<u>Clients Receiving Housing & Home Supports Number</u>	<u>Percent</u>	<u>Days of Housing & Home Support Services</u>	<u>Housing & Home Support Days Per Client</u>
OVERALL	11,205	189	2%	35,008	185
<u>Designated Agency</u>					
CSAC (Addison)	875	1	0%	13	13
NCSS (Northwest)	1,899	-	-	-	-
HC (Chittenden)	2,189	24	1%	3,858	161
LCMH (Lamoille)	411	19	5%	2,830	149
HCRS (Southeast)	1,259	-	-	-	-
NKHS (Northeast)	715	14	2%	1,645	118
CMC (Orange)	588	-	-	-	-
RMHS (Rutland)	995	-	-	-	-
UCS (Bennington)	533	-	-	-	-
WCMH (Washington)	1,125	81	7%	16,756	207
Northeastern Family Institute	616	50	8%	9,906	198

See notes 2, 3 and 16.

TABLE 2A-10
Vermont Agency of Human Services
Department of Mental Health
CHILDREN'S SERVICES PROGRAMS

RESPITE SERVICES

Designated Agencies

Fiscal Year 2018

	<u>Total Clients Served</u>	<u>Clients Receiving Respite Services Number</u>	<u>Percent</u>	<u>Number of Respite Services</u>	<u>Services as Percentage of all Children's Non- Residential Services</u>	<u>Respite Services Per Client</u>
OVERALL	11,205	192	2%	3,339	1%	17
<u>Designated Agency</u>						
CSAC (Addison)	875	2	0%	153	0%	76
NCSS (Northwest)	1,899	58	3%	1,101	1%	19
HC (Chittenden)	2,189	-	-	-	-	-
LCMH (Lamoille)	411	1	0%	1	0%	1
HCRS (Southeast)	1,259	51	4%	640	2%	13
NKHS (Northeast)	715	38	5%	833	2%	22
CMC (Orange)	588	1	0%	5	0%	5
RMHS (Rutland)	995	12	1%	143	0%	12
UCS (Bennington)	533	4	1%	76	0%	19
WCMH (Washington)	1,125	9	1%	181	0%	20
Northeastern Family Institute	616	16	3%	206	1%	13

See notes 2, 3 and 17.

2B: Adult Mental Health Outpatient Programs

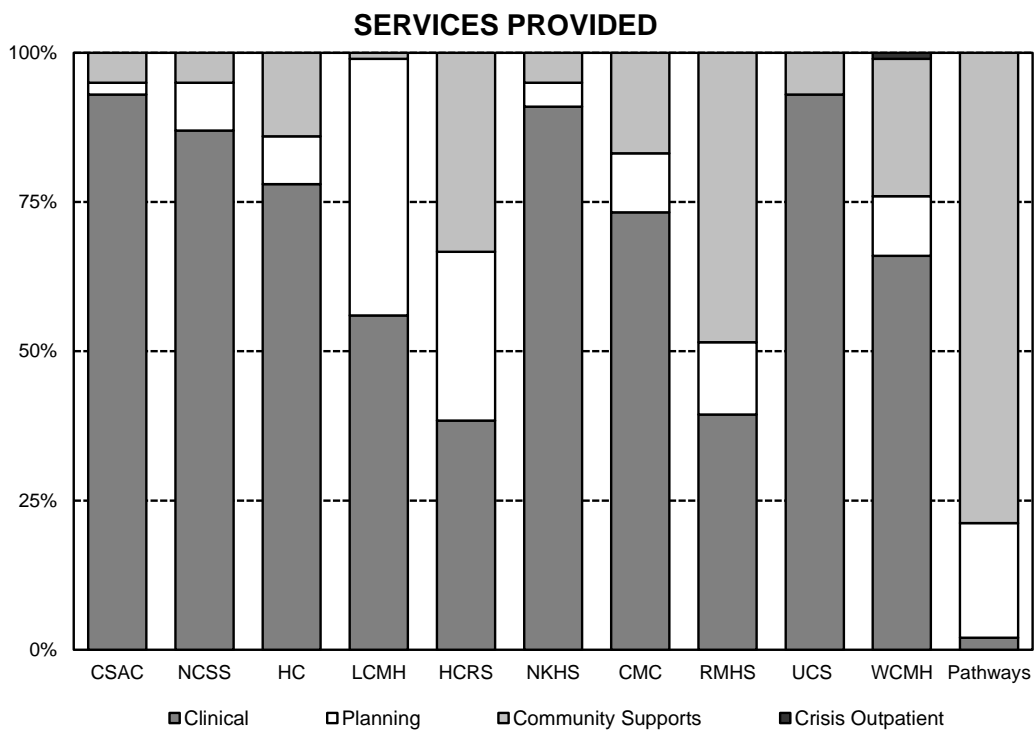


TABLE 2B-1
Vermont Agency of Human Services
Department of Mental Health
ADULT MENTAL HEALTH OUTPATIENT PROGRAMS

AGE AND GENDER OF CLIENTS SERVED

Designated Agencies

Fiscal Year 2018

	Clients <u>Served</u>	Age						Gender	
		<u>0 - 12</u>	<u>13 - 19</u>	<u>20 - 34</u>	<u>35 - 49</u>	<u>50 - 64</u>	<u>65 +</u>	<u>Male</u>	<u>Female</u>
OVERALL	6,773	-	3%	33%	28%	24%	12%	39%	61%
<u>Designated Agency</u>									
CSAC (Addison)	616	-	4%	40%	19%	24%	13%	38%	62%
NCSS (Northwest)	834	-	7%	35%	26%	20%	11%	35%	65%
HC (Chittenden)	599	-	2%	36%	28%	20%	15%	43%	57%
LCMH (Lamoille)	165	-	2%	36%	34%	21%	7%	36%	64%
HCRS (Southeast)	862	-	2%	37%	29%	22%	9%	44%	56%
NKHS (Northeast)	839	-	1%	25%	31%	32%	11%	36%	64%
CMC (Orange)	540	-	1%	32%	30%	28%	9%	42%	58%
RMHS (Rutland)	299	-	5%	25%	22%	24%	24%	45%	55%
UCS (Bennington)	589	-	3%	28%	30%	26%	13%	35%	65%
WCMH (Washington)	1,284	-	3%	36%	29%	20%	13%	38%	62%
Pathways	146	-	0%	18%	33%	42%	7%	55%	45%

See notes 2, 3 and 4

TABLE 2B-2
Vermont Agency of Human Services
Department of Mental Health
ADULT MENTAL HEALTH OUTPATIENT PROGRAMS

RESPONSIBILITY FOR FEE OF CLIENTS SERVED

Designated Agencies
Fiscal Year 2018

	Total	Responsibility for Fee				
	<u>Clients Served</u>	<u>Medicaid</u>	<u>Medicare</u>	<u>Other Insurance</u>	<u>State Agency</u>	<u>Unknown/ Uninsured</u>
OVERALL	6,773	59%	21%	24%	7%	10%
<u>Designated Agency</u>						
CSAC (Addison)	616	29%	25%	33%	0%	13%
NCSS (Northwest)	834	41%	17%	36%	-	6%
HC (Chittenden)	599	55%	26%	29%	1%	9%
LCMH (Lamoille)	165	66%	20%	13%	-	15%
HCRS (Southeast)	862	66%	23%	19%	39%	11%
NKHS (Northeast)	839	69%	10%	11%	-	18%
CMC (Orange)	540	57%	20%	32%	-	9%
RMHS (Rutland)	299	75%	34%	20%	9%	6%
UCS (Bennington)	589	67%	29%	26%	14%	6%
WCMH (Washington)	1,284	66%	22%	21%	0%	10%
Pathways	146	100%	-	-	-	-

See notes 2, 3 and especially 6.

TABLE 2B-3
Vermont Agency of Human Services
Department of Mental Health
ADULT MENTAL HEALTH OUTPATIENT PROGRAMS

DIAGNOSIS OF CLIENTS SERVED

Designated Agencies

Fiscal Year 2018

<u>ICD 10</u>	<i>Total Clients Served</i>	<i>No Dx Data</i>	<i>Physiological Conditions</i>	<i>Psychoactive Substance Use</i>	<i>Schizophrenia Non-Mood Psych Disorders</i>	<i>Mood Disorders</i>	<i>Anxiety Other Nonpsy Mental Disorders</i>	<i>Behavioral Syndromes</i>	<i>Disorders of Adult Personality and Behavior</i>	<i>Intellectual Disabilities</i>	<i>Pervasive Specific Dev Disorders</i>	<i>Beh Emotion Disorders/Child Adol</i>	<i>Unspecified Mental Disorder</i>	<u>Reported N</u>
OVERALL	6,773	7%	1%	21%	4%	51%	62%	1%	7%	1%	1%	6%	1%	6,280
<u>Designated Agency</u>														
CSAC (Addison)	616	-	1%	11%	2%	62%	55%	2%	1%	1%	-	5%	-	613
NCSS (Northwest)	834	4%	2%	18%	2%	38%	73%	1%	8%	1%	1%	2%	-	799
HC (Chittenden)	599	3%	-	38%	4%	45%	65%	-	6%	-	1%	8%	-	582
LCMH (Lamoille)	165	-	1%	25%	3%	54%	61%	2%	4%	1%	1%	11%	-	165
HCRS (Southeast)	862	12%	1%	24%	4%	51%	58%	-	6%	2%	2%	3%	-	760
NKHS (Northeast)	839	-	2%	28%	9%	60%	63%	1%	14%	-	1%	16%	-	837
CMC (Orange)	540	36%	1%	7%	6%	27%	50%	-	11%	-	-	1%	-	348
RMHS (Rutland)	299	2%	1%	30%	5%	55%	58%	1%	3%	2%	1%	2%	21%	293
UCS (Bennington)	589	2%	2%	23%	3%	63%	67%	2%	7%	1%	1%	6%	-	575
WCMH (Washington)	1,284	10%	1%	18%	2%	52%	65%	-	4%	1%	-	1%	-	1,162
Pathways	146	-	1%	1%	8%	41%	42%	-	2%	-	-	4%	-	146

As clients may have as many as four diagnoses reported, diagnostic groups do not represent an unduplicated count of clients served.

See notes 2, 3 and 7.

TABLE 2B-4
Vermont Agency of Human Services
Department of Mental Health
ADULT MENTAL HEALTH OUTPATIENT PROGRAMS

LENGTH OF STAY OF CLIENTS SERVED

Designated Agencies

Fiscal Year 2018

	Total Clients Served	No Data	Current Fiscal Year	Year of Admission				Reported N
				Previous Fiscal Year	3 - 5 Years Earlier	6 - 10 Years Earlier	11+ Years Earlier	
OVERALL	6,773	1%	45%	20%	17%	9%	8%	6,729
<u>Designated Agency</u>								
CSAC (Addison)	616	0%	40%	19%	18%	10%	13%	613
NCSS (Northwest)	834	2%	51%	20%	12%	6%	11%	819
HC (Chittenden)	599	0%	57%	23%	12%	5%	3%	598
LCMH (Lamoille)	165	1%	30%	24%	28%	17%	1%	164
HCRS (Southeast)	862	0%	58%	20%	13%	4%	6%	859
NKHS (Northeast)	839	0%	25%	12%	15%	28%	20%	835
CMC (Orange)	540	0%	42%	20%	21%	12%	4%	538
RMHS (Rutland)	299	1%	68%	21%	7%	3%	1%	295
UCS (Bennington)	589	1%	43%	24%	13%	7%	13%	586
WCMH (Washington)	1,284	1%	49%	22%	19%	7%	3%	1,276
Pathways	146	-	1%	2%	95%	1%	-	146

See notes 2, 3 and 9.

TABLE 2B-5
Vermont Agency of Human Services
Department of Mental Health
ADULT MENTAL HEALTH OUTPATIENT SERVICES

CLINICAL INTERVENTIONS

Designated Agencies
Fiscal Year 2018

	<u>Total Clients Served</u>	<u>Clients Receiving Clinical Interventions Number</u>	<u>Percent</u>	<u>Number of Clinical Interventions</u>	<u>Services as Percentage of all Adult Outpt Non- Residential Services</u>	<u>Clinical Interventions Per Client</u>
OVERALL	7,846	6,826	87%	68,194	62%	10
<u>Designated Agency</u>						
CSAC (Addison)	651	644	99%	6,353	93%	10
NCSS (Northwest)	953	912	96%	8,877	87%	10
HC (Chittenden)	709	597	84%	5,053	78%	8
LCMH (Lamoille)	232	185	80%	1,825	56%	10
HCRS (Southeast)	1,108	740	67%	5,118	38%	7
NKHS (Northeast)	992	979	99%	10,448	91%	11
CMC (Orange)	603	592	98%	7,427	74%	13
RMHS (Rutland)	369	274	74%	1,565	39%	6
UCS (Bennington)	678	663	98%	8,163	93%	12
WCMH (Washington)	1,405	1,121	80%	13,027	66%	12
Pathways	146	119	82%	338	2%	3

See notes 2, 3 and 10.

TABLE 2B-5a
Vermont Agency of Human Services
Department of Mental Health
ADULT MENTAL HEALTH OUTPATIENT SERVICES

INDIVIDUAL, FAMILY, AND GROUP THERAPY

Designated Agencies

Fiscal Year 2018

	<u>Total Clients Served</u>	<u>Clients Receiving Therapy Number</u>	<u>Percent</u>	<u>Number of Therapy Sessions</u>	<u>Services as Percentage of all Adult Outpt Non- Residential Services</u>	<u>Therapy Sessions Per Client</u>
OVERALL	7,846	4,502	57%	50,139	46%	11
<u>Designated Agency</u>						
CSAC (Addison)	651	373	57%	4,105	60%	11
NCSS (Northwest)	953	737	77%	7,507	74%	10
HC (Chittenden)	709	453	64%	4,281	66%	9
LCMH (Lamoille)	232	113	49%	1,320	40%	12
HCRS (Southeast)	1,108	467	42%	4,430	32%	9
NKHS (Northeast)	992	345	35%	3,747	33%	11
CMC (Orange)	603	470	78%	6,480	64%	14
RMHS (Rutland)	369	116	31%	1,150	29%	10
UCS (Bennington)	678	551	81%	6,512	74%	12
WCMH (Washington)	1,405	877	62%	10,607	54%	12
Pathways	146	-	-	-	-	-

See notes 2, 3 and 10.

TABLE 2B-5b
Vermont Agency of Human Services
Department of Mental Health
ADULT MENTAL HEALTH OUTPATIENT SERVICES

MEDICATION AND MEDICAL SUPPORT AND CONSULTATION SERVICES

Designated Agencies
Fiscal Year 2018

	<u>Total Clients Served</u>	<u>Clients Receiving Medication Services Number</u>	<u>Percent</u>	<u>Number of Medication Services</u>	<u>Services as Percentage of all Adult Outpt Non- Residential Services</u>	<u>Medication Services Per Client</u>
OVERALL	7,846	2,257	29%	14,032	13%	6
<u>Designated Agency</u>						
CSAC (Addison)	651	333	51%	1,921	28%	6
NCSS (Northwest)	953	165	17%	737	7%	4
HC (Chittenden)	709	79	11%	409	6%	5
LCMH (Lamoille)	232	89	38%	390	12%	4
HCRS (Southeast)	1,108	41	4%	145	1%	4
NKHS (Northeast)	992	695	70%	6,260	55%	9
CMC (Orange)	603	169	28%	574	6%	3
RMHS (Rutland)	369	25	7%	75	2%	3
UCS (Bennington)	678	224	33%	1,490	17%	7
WCMH (Washington)	1,405	373	27%	1,781	9%	5
Pathways	146	64	44%	250	2%	4

See notes 2, 3 and 10.

TABLE 2B-5c
Vermont Agency of Human Services
Department of Mental Health
ADULT MENTAL HEALTH OUTPATIENT SERVICES

CLINICAL ASSESSMENT SERVICES

Designated Agencies
Fiscal Year 2018

	<u>Total Clients Served</u>	<u>Clients Receiving Clinical Assessment Number</u>	<u>Percent</u>	<u>Number of Clinical Assessments</u>	<u>Services as Percentage of all Adult Outpt Non- Residential Services</u>	<u>Clinical Assessment Per Client</u>
OVERALL	7,846	3,455	44%	4,023	4%	1
<u>Designated Agency</u>						
CSAC (Addison)	651	293	45%	327	5%	1
NCSS (Northwest)	953	569	60%	633	6%	1
HC (Chittenden)	709	306	43%	363	6%	1
LCMH (Lamoille)	232	96	41%	115	4%	1
HCRS (Southeast)	1,108	511	46%	543	4%	1
NKHS (Northeast)	992	355	36%	441	4%	1
CMC (Orange)	603	337	56%	373	4%	1
RMHS (Rutland)	369	222	60%	340	9%	2
UCS (Bennington)	678	151	22%	161	2%	1
WCMH (Washington)	1,405	532	38%	639	3%	1
Pathways	146	83	57%	88	1%	1

See notes 2, 3 and 10.

TABLE 2B-6
Vermont Agency of Human Services
Department of Mental Health
ADULT MENTAL HEALTH OUTPATIENT SERVICES

SERVICE PLANNING AND COORDINATION

Designated Agencies
Fiscal Year 2018

	<u>Total Clients Served</u>	<u>Clients Receiving Planning Services Number</u>	<u>Percent</u>	<u>Number of Planning Services</u>	<u>Services as Percentage of all Adult Outpt Non- Residential Services</u>	<u>Planning & Services Per Client</u>
OVERALL	7,846	2,012	26%	13,485	12%	7
<u>Designated Agency</u>						
CSAC (Addison)	651	53	8%	123	2%	2
NCSS (Northwest)	953	167	18%	772	8%	5
HC (Chittenden)	709	171	24%	513	8%	3
LCMH (Lamoille)	232	109	47%	1,389	43%	13
HCRS (Southeast)	1,108	489	44%	3,843	28%	8
NKHS (Northeast)	992	131	13%	473	4%	4
CMC (Orange)	603	245	41%	966	10%	4
RMHS (Rutland)	369	139	38%	494	12%	4
UCS (Bennington)	678	2	0%	6	0%	3
WCMH (Washington)	1,405	367	26%	2,001	10%	5
Pathways	146	139	95%	2905	19%	21

See notes 2, 3 and 12.

TABLE 2B-7
Vermont Agency of Human Services
Department of Mental Health
ADULT MENTAL HEALTH OUTPATIENT SERVICES

COMMUNITY SUPPORTS

Designated Agencies
Fiscal Year 2018

	<u>Total Clients Served</u>	<u>Clients Receiving Support Services Number</u>	<u>Percent</u>	<u>Number of Community Support Services</u>	<u>Services as Percentage of all Adult Outpt Non- Residential Services</u>	<u>Support Services Per Client</u>
OVERALL	7,846	2,914	37%	27,230	25%	9
<u>Designated Agency</u>						
CSAC (Addison)	651	58	9%	319	5%	5
NCSS (Northwest)	953	142	15%	559	5%	4
HC (Chittenden)	709	163	23%	903	14%	6
LCMH (Lamoille)	232	14	6%	46	1%	3
HCRS (Southeast)	1,108	834	75%	4,446	33%	5
NKHS (Northeast)	992	130	13%	542	5%	4
CMC (Orange)	603	384	64%	1,677	17%	4
RMHS (Rutland)	369	185	50%	1,916	48%	10
UCS (Bennington)	678	61	9%	585	7%	10
WCMH (Washington)	1,405	799	57%	4,465	23%	6
Pathways	146	144	99%	11772	78%	82

See notes 2, 3 and 13.

TABLE 2B-8
Vermont Agency of Human Services
Department of Mental Health
ADULT MENTAL HEALTH OUTPATIENT SERVICES

EMERGENCY/CRISIS ASSESSMENT, SUPPORT AND REFERRAL

Designated Agencies

Fiscal Year 2018

	<u>Total Clients Served</u>	<u>Clients Receiving Emerg./Crisis Services Number</u>	<u>Percent</u>	<u>Number of Emerg./Crisis Services</u>	<u>Services as Percentage of all Adult Outpt Non- Residential Services</u>	<u>Emerg./Crisis Services Per Client</u>
OVERALL	7,846	140	2%	153	0%	1
<u>Designated Agency</u>						
CSAC (Addison)	651	-	-	-	-	-
NCSS (Northwest)	953	-	-	-	-	-
HC (Chittenden)	709	-	-	-	-	-
LCMH (Lamoille)	232	-	-	-	-	-
HCRS (Southeast)	1,108	-	-	-	-	-
NKHS (Northeast)	992	-	-	-	-	-
CMC (Orange)	603	-	-	-	-	-
RMHS (Rutland)	369	-	-	-	-	-
UCS (Bennington)	678	-	-	-	-	-
WCMH (Washington)	1,405	140	10%	153	1%	1
Pathways	146	-	-	-	-	-

See notes 2, 3 and 15.

2C: Community Rehabilitation and Treatment Programs

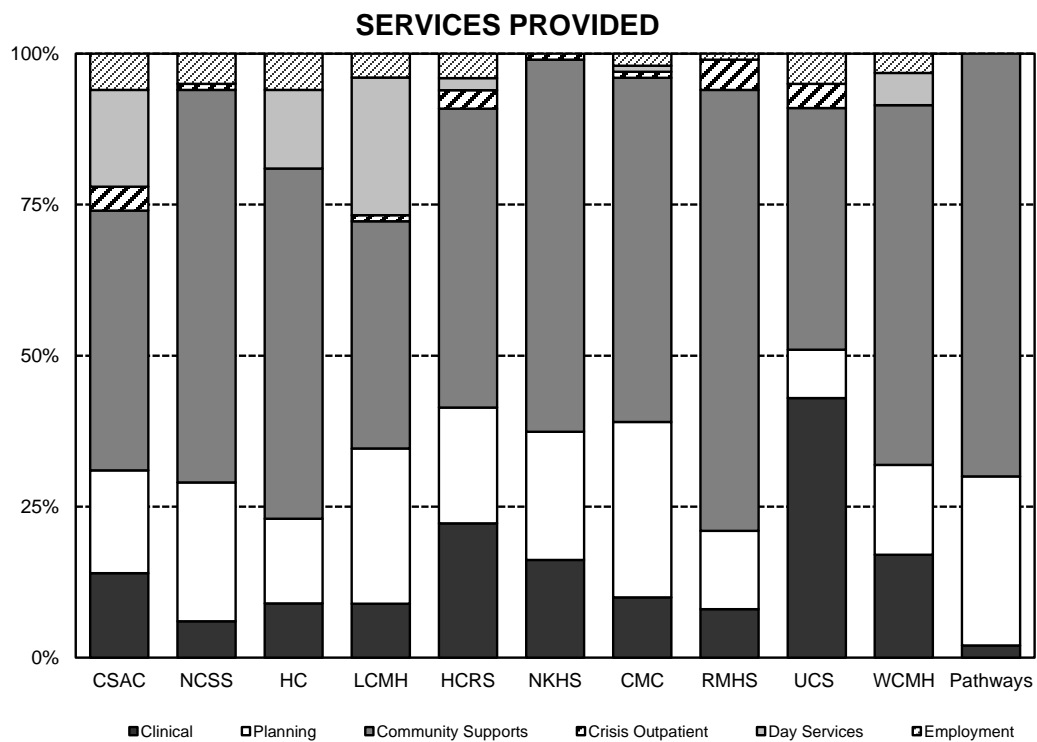


TABLE 2C-1
Vermont Agency of Human Services
Department of Mental Health
COMMUNITY REHABILITATION AND TREATMENT PROGRAMS

AGE AND GENDER OF CLIENTS SERVED

Designated Agencies
Fiscal Year 2018

	Clients <u>Served</u>	<u>Age</u>						<u>Gender</u>	
		<u>0 - 12</u>	<u>13 - 19</u>	<u>20 - 34</u>	<u>35 - 49</u>	<u>50 - 64</u>	<u>65 +</u>	<u>Male</u>	<u>Female</u>
OVERALL	2,628	-	1%	17%	26%	41%	16%	51%	49%
<u>Designated Agency</u>									
CSAC (Addison)	153	-	-	16%	20%	48%	16%	54%	46%
NCSS (Northwest)	225	-	1%	13%	25%	44%	17%	43%	57%
HC (Chittenden)	615	-	1%	20%	29%	37%	13%	55%	45%
LCMH (Lamoille)	132	-	4%	20%	24%	39%	13%	46%	54%
HCRS (Southeast)	378	-	1%	19%	27%	39%	13%	50%	50%
NKHS (Northeast)	227	-	1%	20%	18%	46%	15%	58%	42%
CMC (Orange)	100	-	—	15%	20%	44%	21%	42%	58%
RMHS (Rutland)	274	-	1%	12%	27%	42%	18%	50%	50%
UCS (Bennington)	142	-	1%	11%	30%	42%	16%	44%	56%
WCMH (Washington)	335	-	1%	16%	24%	40%	20%	53%	47%
Pathways	47	-	-	21%	43%	30%	6%	72%	28%

See notes 2, 3 and 4.

TABLE 2C-2
Vermont Agency of Human Services
Department of Mental Health
COMMUNITY REHABILITATION AND TREATMENT PROGRAMS

RESPONSIBILITY FOR FEE OF CLIENTS SERVED

Designated Agencies
Fiscal Year 2018

	Total <u>Clients Served</u>	<u>Responsibility for Fee</u>				
		<u>Medicaid</u>	<u>Medicare</u>	<u>Other Insurance</u>	<u>State Agency</u>	<u>Unknown/ Uninsured</u>
OVERALL	2,628	72%	52%	12%	23%	3%
<u>Designated Agency</u>						
CSAC (Addison)	153	39%	56%	5%	-	1%
NCSS (Northwest)	225	33%	60%	4%	-	2%
HC (Chittenden)	615	97%	46%	10%	-	2%
LCMH (Lamoille)	132	95%	40%	5%	-	-
HCRS (Southeast)	378	74%	58%	11%	13%	3%
NKHS (Northeast)	227	67%	9%	35%	-	15%
CMC (Orange)	100	24%	34%	12%	72%	1%
RMHS (Rutland)	274	95%	72%	28%	9%	0%
UCS (Bennington)	142	5%	65%	5%	92%	3%
WCMH (Washington)	335	80%	70%	7%	98%	-
Pathways	47	100%	-	-	-	-

See notes 2, 3 and especially 6.

TABLE 2C-3
Vermont Agency of Human Services
Department of Mental Health
COMMUNITY REHABILITATION AND TREATMENT PROGRAMS

DIAGNOSIS OF CLIENTS SERVED

Designated Agencies

Fiscal Year 2018

<u>ICD 10</u>	<i>Total Clients Served</i>	<i>No Dx Data</i>	<i>Physiological Conditions</i>	<i>Psychoactive Substance Use</i>	<i>Schizophrenia Non-Mood Psych Disorders</i>	<i>Mood Disorders</i>	<i>Anxiety Other Nonpsy Mental Disorders</i>	<i>Behavioral Syndromes</i>	<i>Disorders of Adult Personality and Behavior</i>	<i>Intellectual Disabilities</i>	<i>Pervasive Specific Dev Disorders</i>	<i>Beh Emotion Disorder/Child Adol</i>	<i>Unspecified Mental Disorder</i>	<u>Reported N</u>
OVERALL	2,628	1%	1%	32%	51%	42%	32%	1%	18%	1%	1%	3%	0%	2,596
<u>Designated Agency</u>														
CSAC (Addison)	153	—	—	16%	48%	46%	23%	1%	10%	1%	2%	2%	—	153
NCSS (Northwest)	225	1%	—	43%	38%	50%	30%	—	27%	—	1%	1%	—	222
HC (Chittenden)	615	3%	2%	44%	53%	42%	32%	1%	14%	—	1%	6%	—	—
LCMH (Lamoille)	132	—	2%	23%	40%	55%	46%	2%	9%	1%	—	7%	—	132
HCRS (Southeast)	378	1%	1%	29%	49%	43%	40%	1%	23%	2%	2%	3%	—	375
NKHS (Northeast)	227	—	3%	29%	63%	37%	33%	2%	17%	2%	2%	4%	—	227
CMC (Orange)	100	8%	1%	16%	51%	28%	26%	—	27%	—	1%	1%	1%	92
RMHS (Rutland)	274	—	2%	34%	52%	42%	27%	—	21%	—	3%	—	1%	274
UCS (Bennington)	142	1%	3%	22%	54%	41%	48%	2%	27%	2%	1%	1%	—	141
WCMH (Washington)	335	—	1%	30%	54%	37%	25%	—	14%	4%	1%	2%	—	335
Pathways	47	—	—	—	62%	19%	13%	—	4%	—	—	2%	—	47

As clients may have as many as four diagnoses reported, diagnostic groups do not represent an unduplicated count of clients served.

See notes 2, 3 and 7.

TABLE 2C-4
Vermont Agency of Human Services
Department of Mental Health
COMMUNITY REHABILITATION AND TREATMENT PROGRAMS

LENGTH OF STAY OF CLIENTS SERVED

Designated Agencies
Fiscal Year 2018

	Total Clients Served	No Data	Year of Admission					Reported N
			Current Fiscal Year	Previous Fiscal Year	3 - 5 Years Earlier	6 - 10 Years Earlier	11+ Years Earlier	
OVERALL	2,628	1%	6%	7%	20%	19%	47%	2,613
<u>Designated Agency</u>								
CSAC (Addison)	153	-	1%	4%	16%	14%	66%	153
NCSS (Northwest)	225	-	5%	9%	15%	16%	56%	225
HC (Chittenden)	615	-	5%	9%	17%	21%	48%	615
LCMH (Lamoille)	132	-	6%	8%	52%	32%	2%	132
HCRS (Southeast)	378	-	7%	9%	22%	21%	42%	378
NKHS (Northeast)	227	-	5%	4%	19%	22%	49%	227
CMC (Orange)	100	12%	-	1%	-	32%	67%	88
RMHS (Rutland)	274	-	15%	9%	20%	13%	43%	271
UCS (Bennington)	142	-	8%	4%	14%	20%	53%	142
WCMH (Washington)	335	-	4%	8%	15%	17%	56%	335
Pathways	47	-	-	-	100%	-	-	47

See notes 2, 3 and 9.

TABLE 2C-5
Vermont Agency of Human Services
Department of Mental Health
COMMUNITY REHABILITATION AND TREATMENT PROGRAMS

CLINICAL INTERVENTIONS

Designated Agencies
Fiscal Year 2018

	<u>Total Clients Served</u>	<u>Clients Receiving Clinical Interventions Number</u>	<u>Percent</u>	<u>Number of Clinical Interventions</u>	<u>Services as Percentage of all CRT Non- Residential Services</u>	<u>Clinical Interventions Per Client</u>
OVERALL	2,815	2,488	88%	49,098	13%	20
<u>Designated Agency</u>						
CSAC (Addison)	175	150	86%	3,121	14%	21
NCSS (Northwest)	225	184	82%	2,483	6%	13
HC (Chittenden)	632	558	88%	4,778	9%	9
LCMH (Lamoille)	137	111	81%	2,660	9%	24
HCRS (Southeast)	397	354	89%	6,215	22%	18
NKHS (Northeast)	241	216	90%	6,459	16%	30
CMC (Orange)	180	163	91%	3,879	10%	24
RMHS (Rutland)	290	259	89%	2,511	8%	10
UCS (Bennington)	156	134	86%	7,303	43%	54
WCMH (Washington)	335	315	94%	9,532	16%	30
Pathways	47	44	94%	157	2%	4

See notes 2, 3 and 10.

TABLE 2C-5a
Vermont Agency of Human Services
Department of Mental Health
COMMUNITY REHABILITATION AND TREATMENT PROGRAMS

INDIVIDUAL, FAMILY, AND GROUP THERAPY

Designated Agencies

Fiscal Year 2018

	<u>Total Clients Served</u>	<u>Clients Receiving Therapy Number</u>	<u>Percent</u>	<u>Number of Therapy Sessions</u>	<u>Services as Percentage of all CRT Non- Residential Services</u>	<u>Therapy Sessions Per Client</u>
OVERALL	2,815	983	35%	18,858	5%	19
<u>Designated Agency</u>						
CSAC (Addison)	175	70	40%	910	4%	13
NCSS (Northwest)	225	179	80%	1,431	3%	8
HC (Chittenden)	632	46	7%	635	1%	14
LCMH (Lamoille)	137	75	55%	1,868	6%	25
HCRS (Southeast)	397	200	50%	3,980	14%	20
NKHS (Northeast)	241	34	14%	634	2%	19
CMC (Orange)	180	110	61%	2,878	8%	26
RMHS (Rutland)	290	35	12%	540	2%	15
UCS (Bennington)	156	75	48%	1,780	10%	24
WCMH (Washington)	335	159	47%	4,202	7%	26
Pathways	47	-	-	-	-	-

See notes 2, 3 and 10.

TABLE 2C-5b
Vermont Agency of Human Services
Department of Mental Health
COMMUNITY REHABILITATION AND TREATMENT PROGRAMS

MEDICATION AND MEDICAL SUPPORT AND CONSULTATION SERVICES

Designated Agencies
Fiscal Year 2018

	<u>Total Clients Served</u>	<u>Clients Receiving Medication Services Number</u>	<u>Percent</u>	<u>Number of Medication Services</u>	<u>Services as Percentage of all CRT Non- Residential Services</u>	<u>Medication Services Per Client</u>
OVERALL	2,815	2,305	82%	29,547	8%	13
<u>Designated Agency</u>						
CSAC (Addison)	175	135	77%	2,209	10%	16
NCSS (Northwest)	225	174	77%	1,042	2%	6
HC (Chittenden)	632	514	81%	3,976	7%	8
LCMH (Lamoille)	137	100	73%	769	3%	8
HCRS (Southeast)	397	325	82%	2,093	8%	6
NKHS (Northeast)	241	200	83%	5,764	15%	29
CMC (Orange)	180	154	86%	960	3%	6
RMHS (Rutland)	290	258	89%	1,909	6%	7
UCS (Bennington)	156	121	78%	5,518	32%	46
WCMH (Washington)	335	289	86%	5,188	9%	18
Pathways	47	35	74%	119	1%	3

See notes 2, 3 and 10.

TABLE 2C-5c
Vermont Agency of Human Services
Department of Mental Health
COMMUNITY REHABILITATION AND TREATMENT PROGRAMS

CLINICAL ASSESSMENT SERVICES

Designated Agencies
Fiscal Year 2018

	<u>Total Clients Served</u>	<u>Clients Receiving Clinical Assessment Number</u>	<u>Percent</u>	<u>Number of Clinical Assessments</u>	<u>Services as Percentage of all CRT Non- Residential Services</u>	<u>Clinical Assessment Per Client</u>
OVERALL	2,815	625	22%	693	0%	1
<u>Designated Agency</u>						
CSAC (Addison)	175	2	1%	2	0%	1
NCSS (Northwest)	225	10	4%	10	0%	1
HC (Chittenden)	632	165	26%	167	0%	1
LCMH (Lamoille)	137	23	17%	23	0%	1
HCRS (Southeast)	397	138	35%	142	1%	1
NKHS (Northeast)	241	38	16%	61	0%	2
CMC (Orange)	180	41	23%	41	0%	1
RMHS (Rutland)	290	37	13%	62	0%	2
UCS (Bennington)	156	5	3%	5	0%	1
WCMH (Washington)	335	139	41%	142	0%	1
Pathways	47	27	57%	38	0%	1

See notes 2, 3 and 10.

TABLE 2C-6
Vermont Agency of Human Services
Department of Mental Health
COMMUNITY REHABILITATION AND TREATMENT PROGRAMS

DAY SERVICES
Designated Agencies
Fiscal Year 2018

	<u>Total Clients Served</u>	<u>Clients Receiving Day Services Number</u>	<u>Percent</u>	<u>Number of Day Services</u>	<u>Services as Percentage of all CRT Non- Residential Services</u>	<u>Day Services Per Client</u>
OVERALL	2,815	483	17%	21,960	6%	45
<u>Designated Agency</u>						
CSAC (Addison)	175	45	26%	3,463	16%	77
NCSS (Northwest)	225	-	-	-	-	-
HC (Chittenden)	632	160	25%	7,282	13%	46
LCMH (Lamoille)	137	113	82%	6,912	23%	61
HCRS (Southeast)	397	64	16%	663	2%	10
NKHS (Northeast)	241	-	-	-	-	-
CMC (Orange)	180	34	19%	386	1%	11
RMHS (Rutland)	290	-	-	-	-	-
UCS (Bennington)	156	-	-	-	-	-
WCMH (Washington)	335	67	20%	3,254	5%	49
Pathways	47	-	-	-	-	-

See notes 2, 3 and 11.

TABLE 2C-7
Vermont Agency of Human Services
Department of Mental Health
COMMUNITY REHABILITATION AND TREATMENT PROGRAMS

SERVICE PLANNING AND COORDINATION

Designated Agencies
Fiscal Year 2018

	<u>Total Clients Served</u>	<u>Clients Receiving Planning Services Number</u>	<u>Percent</u>	<u>Number of Planning Services</u>	<u>Services as Percentage of all CRT Non- Residential Services</u>	<u>Planning Services Per Client</u>
OVERALL	2,815	2,537	90%	69,959	19%	28
<u>Designated Agency</u>						
CSAC (Addison)	175	140	80%	3,727	17%	27
NCSS (Northwest)	225	222	99%	10,209	23%	46
HC (Chittenden)	632	532	84%	7,641	14%	14
LCMH (Lamoille)	137	133	97%	7,761	26%	58
HCRS (Southeast)	397	364	92%	5,250	19%	14
NKHS (Northeast)	241	238	99%	8,363	21%	35
CMC (Orange)	180	169	94%	10,822	29%	64
RMHS (Rutland)	290	259	89%	4,066	13%	16
UCS (Bennington)	156	128	82%	1,435	8%	11
WCMH (Washington)	335	306	91%	8,240	14%	27
Pathways	47	46	98%	2,445	28%	53

See notes 2, 3 and 12.

TABLE 2C-8
Vermont Agency of Human Services
Department of Mental Health
COMMUNITY REHABILITATION AND TREATMENT PROGRAMS

COMMUNITY SUPPORTS

Designated Agencies
Fiscal Year 2018

	<u>Total Clients Served</u>	<u>Clients Receiving Support Services Number</u>	<u>Percent</u>	<u>Number of Community Support Services</u>	<u>Services as Percentage of all CRT Non- Residential Services</u>	<u>Support Services Per Client</u>
OVERALL	2,815	2,639	94%	208,179	56%	79
<u>Designated Agency</u>						
CSAC (Addison)	175	151	86%	9,587	43%	63
NCSS (Northwest)	225	224	100%	28,470	65%	127
HC (Chittenden)	632	592	94%	31,210	58%	53
LCMH (Lamoille)	137	126	92%	11,376	38%	90
HCRS (Southeast)	397	374	94%	13,477	49%	36
NKHS (Northeast)	241	232	96%	23,953	61%	103
CMC (Orange)	180	169	94%	21,313	57%	126
RMHS (Rutland)	290	265	91%	22,847	73%	86
UCS (Bennington)	156	142	91%	6,806	40%	48
WCMH (Washington)	335	317	95%	33,078	56%	104
Pathways	47	47	100%	6,062	70%	129

See notes 2, 3 and 13.

TABLE 2C-9
Vermont Agency of Human Services
Department of Mental Health
COMMUNITY REHABILITATION AND TREATMENT PROGRAMS

EMPLOYMENT SERVICES

Designated Agencies
Fiscal Year 2018

	<u>Total Clients Served</u>	<u>Clients Receiving Employment Services Number</u>	<u>Percent</u>	<u>Number of Employment Services</u>	<u>Services as Percentage of all CRT Non- Residential Services</u>	<u>Employment Services Per Client</u>
OVERALL	2,815	716	25%	13,059	4%	18
<u>Designated Agency</u>						
CSAC (Addison)	175	52	30%	1,416	6%	27
NCSS (Northwest)	225	73	32%	2,247	5%	31
HC (Chittenden)	632	164	26%	3,297	6%	20
LCMH (Lamoille)	137	61	45%	1,138	4%	19
HCRS (Southeast)	397	71	18%	1,198	4%	17
NKHS (Northeast)	241	39	16%	168	0%	4
CMC (Orange)	180	60	33%	645	2%	11
RMHS (Rutland)	290	60	21%	448	1%	7
UCS (Bennington)	156	47	30%	855	5%	18
WCMH (Washington)	335	89	27%	1,647	3%	19
Pathways	47	-	-	-	-	-

See notes 2, 3 and 14.

TABLE 2C-10a
Vermont Agency of Human Services
Department of Mental Health
COMMUNITY REHABILITATION AND TREATMENT PROGRAMS

EMERGENCY/CRISIS ASSESSMENT, SUPPORT AND REFERRAL

Designated Agencies

Fiscal Year 2018

	<u>Total Clients Served</u>	<u>Clients Receiving Emerg./Crisis Services Number</u>	<u>Percent</u>	<u>Number of Emerg./Crisis Services</u>	<u>Services as Percentage of all CRT Non- Residential Services</u>	<u>Emerg./Crisis Services Per Client</u>
OVERALL	2,815	697	25%	5,410	1%	8
<u>Designated Agency</u>						
CSAC (Addison)	175	63	36%	804	4%	13
NCSS (Northwest)	225	82	36%	582	1%	7
HC (Chittenden)	632	18	3%	19	0%	1
LCMH (Lamoille)	137	41	30%	166	1%	4
HCRS (Southeast)	397	125	31%	882	3%	7
NKHS (Northeast)	241	57	24%	378	1%	7
CMC (Orange)	180	53	29%	193	1%	4
RMHS (Rutland)	290	129	44%	1,498	5%	12
UCS (Bennington)	156	54	35%	731	4%	14
WCMH (Washington)	335	75	22%	157	0%	2
Pathways	47	-	-	-	-	-

See notes 2, 3 and 15.

TABLE 2C-10b
Vermont Agency of Human Services
Department of Mental Health
COMMUNITY REHABILITATION AND TREATMENT PROGRAMS

EMERGENCY/CRISIS BEDS

Designated Agencies
Fiscal Year 2018

	Total Clients <u>Served</u>	Clients Receiving Emergency/Crisis Bed Services <u>Number</u>	<u>Percent</u>	Days of Emergency/Crisis <u>Bed Services</u>	Emergency/Crisis <u>Bed Days</u> Per Client
OVERALL	2,815	355	13%	7,761	22
<u>Designated Agency</u>					
CSAC (Addison)	175	-	-	-	-
NCSS (Northwest)	225	30	13%	342	11
HC (Chittenden)	632	90	14%	872	10
LCMH (Lamoille)	137	22	16%	305	14
HCRS (Southeast)	397	57	14%	1,502	26
NKHS (Northeast)	241	-	-	-	-
CMC (Orange)	180	8	4%	63	8
RMHS (Rutland)	290	48	17%	2,662	55
UCS (Bennington)	156	39	25%	1,081	28
WCMH (Washington)	335	61	18%	934	15
Pathways	47	-	-	-	-

See notes 2, 3 and 15.

TABLE 2C-11
Vermont Agency of Human Services
Department of Mental Health
COMMUNITY REHABILITATION AND TREATMENT PROGRAMS

HOUSING AND HOME SUPPORTS

Designated Agencies
Fiscal Year 2018

	<u>Total Clients Served</u>	<u>Clients Receiving Housing & Home Supports Number</u>	<u>Percent</u>	<u>Days of Housing & Home Support Services</u>	<u>Housing & Home Support Days Per Client</u>
OVERALL	2,815	245	9%	54,342	222
<u>Designated Agency</u>					
CSAC (Addison)	175	25	14%	3,935	157
NCSS (Northwest)	225	16	7%	3,894	243
HC (Chittenden)	632	86	14%	19,208	223
LCMH (Lamoille)	137	28	20%	8,795	314
HCRS (Southeast)	397	22	6%	4,832	220
NKHS (Northeast)	241	-	-	-	-
CMC (Orange)	180	11	6%	1,232	112
RMHS (Rutland)	290	-	-	-	-
UCS (Bennington)	156	11	7%	2,042	186
WCMH (Washington)	335	46	14%	10,404	226
Pathways	47	-	-	-	-

See notes 2, 3 and 16.

2E: Emergency Service Programs

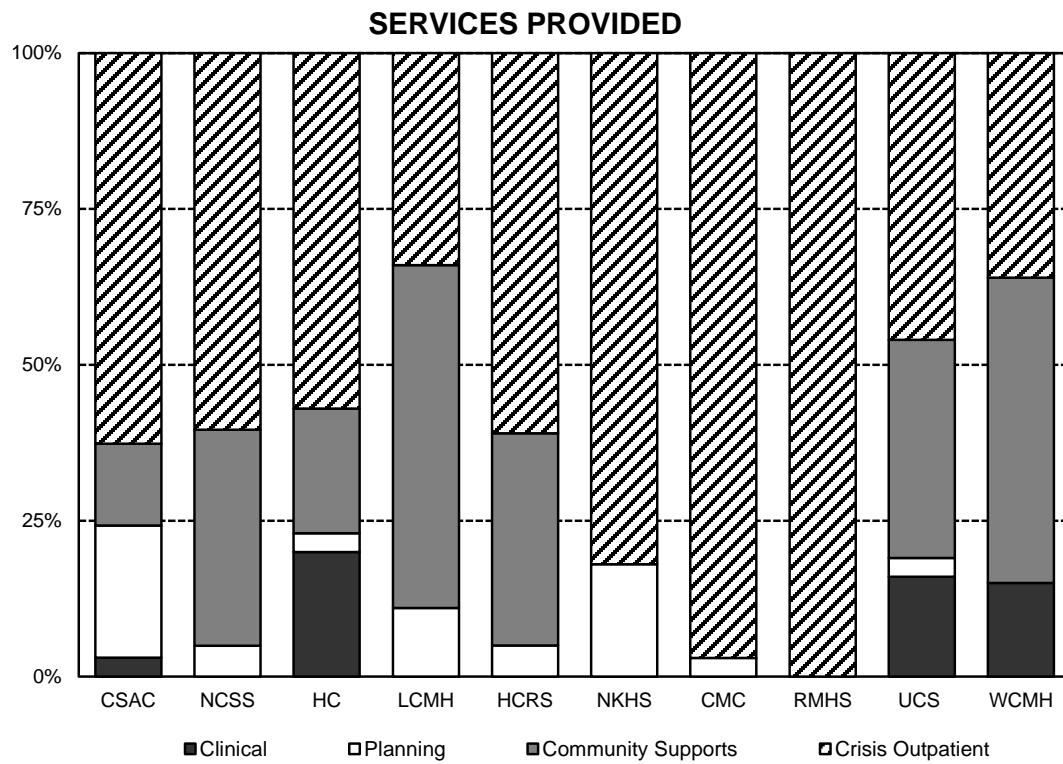


TABLE 2E-1
Vermont Agency of Human Services
Department of Mental Health
EMERGENCY SERVICES

CLINICAL INTERVENTIONS
Designated Agencies
Fiscal Year 2018

	Total Clients <u>Served</u>	Clients Receiving Clinical Interventions		Number of Clinical <u>Interventions</u>	Services as Percentage of all Emergency <u>Non-Residential Services</u>	Clinical Interventions <u>Per Client</u>
		<u>Number</u>	<u>Percent</u>			
OVERALL	7,365	717	10%	2,055	7%	3
<u>Designated Agency</u>						
CSAC (Addison)	263	6	2%	24	1%	4
NCSS (Northwest)	816	-	-	-	-	-
HC (Chittenden)	2,229	259	12%	1,391	11%	5
LCMH (Lamoille)	278	-	-	-	-	-
HCRS (Southeast)	808	-	-	-	-	-
NKHS (Northeast)	474	2	0%	3	0%	1
CMC (Orange)	417	-	-	-	-	-
RMHS (Rutland)	683	-	-	-	-	-
UCS (Bennington)	922	416	45%	457	21%	1
WCMH (Washington)	475	34	7%	180	12%	5

See notes 2, 3 and 10.

TABLE 2E-2
Vermont Agency of Human Services
Department of Mental Health
EMERGENCY SERVICES

SERVICE PLANNING AND COORDINATION
Designated Agencies
Fiscal Year 2018

	Total Clients <u>Served</u>	Clients Receiving Planning & Coordination Services		Number of Planning & Coordination <u>Services</u>	Services as Percentage of all Emergency <u>Non-Residential Services</u>	Planning & Coordination <u>Services Per Client</u>
		<u>Number</u>	<u>Percent</u>			
OVERALL	7,365	600	8%	1,453	5%	2
<u>Designated Agency</u>						
CSAC (Addison)	263	73	28%	227	13%	3
NCSS (Northwest)	816	61	7%	187	4%	3
HC (Chittenden)	2,229	117	5%	143	1%	1
LCMH (Lamoille)	278	99	36%	180	15%	2
HCRS (Southeast)	808	65	8%	85	4%	1
NKHS (Northeast)	474	97	20%	437	24%	5
CMC (Orange)	417	65	16%	131	10%	2
RMHS (Rutland)	683	-	-	-	-	-
UCS (Bennington)	922	21	2%	60	3%	3
WCMH (Washington)	475	2	0%	3	0%	1

See notes 2, 3 and 12.

TABLE 2E-3
Vermont Agency of Human Services
Department of Mental Health
EMERGENCY SERVICES

COMMUNITY SUPPORTS
Designated Agencies
Fiscal Year 2018

	Total Clients <u>Served</u>	Clients Receiving Community Support Services <u>Number</u>	<u>Percent</u>	Number of Community <u>Support Services</u>	Services as Percentage of all Emergency <u>Non-Residential Services</u>	Community Support Services <u>Per Client</u>
OVERALL	7,365	1,121	15%	6,096	20%	5
<u>Designated Agency</u>						
CSAC (Addison)	263	79	30%	786	44%	10
NCSS (Northwest)	816	94	12%	1,288	27%	14
HC (Chittenden)	2,229	198	9%	1,350	11%	7
LCMH (Lamoille)	278	142	51%	605	52%	4
HCRS (Southeast)	808	342	42%	798	36%	2
NKHS (Northeast)	474	-	-	-	-	-
CMC (Orange)	417	-	-	-	-	-
RMHS (Rutland)	683	-	-	-	-	-
UCS (Bennington)	922	80	9%	427	19%	5
WCMH (Washington)	475	186	39%	842	55%	5

See notes 2, 3 and 13.

TABLE 2E-4a
Vermont Agency of Human Services
Department of Mental Health
EMERGENCY SERVICES

EMERGENCY/CRISIS ASSESSMENT, SUPPORT AND REFERRAL
Designated Agencies
Fiscal Year 2018

	Total Clients <u>Served</u>	Clients Receiving Emergency/Crisis Services <u>Number</u>	<u>Percent</u>	Number of Emergency/Crisis <u>Services</u>	Services as Percentage of all Emergency <u>Non-Residential Services</u>	Emergency/ Crisis Services <u>Per Client</u>
OVERALL	7,365	6,308	86%	21,065	69%	3
<u>Designated Agency</u>						
CSAC (Addison)	263	199	76%	737	42%	4
NCSS (Northwest)	816	777	95%	3,227	69%	4
HC (Chittenden)	2,229	2,043	92%	9,538	77%	5
LCMH (Lamoille)	278	169	61%	383	33%	2
HCRS (Southeast)	808	708	88%	1,350	60%	2
NKHS (Northeast)	474	428	90%	1,369	76%	3
CMC (Orange)	417	396	95%	1219	90%	3
RMHS (Rutland)	683	683	100%	1,470	100%	2
UCS (Bennington)	922	548	59%	1,277	57%	2
WCMH (Washington)	475	357	75%	495	33%	1

See notes 2, 3 and 15.

TABLE 2E-4b
Vermont Agency of Human Services
Department of Mental Health
EMERGENCY SERVICES

EMERGENCY/CRISIS BEDS

Designated Agencies
Fiscal Year 2018

	Total Clients <u>Served</u>	Clients Receiving Emergency/Crisis Beds <u>Number</u>	<u>Percent</u>	Days of Emergency/Crisis <u>Beds</u>	Emergency/Crisis <u>Beds</u> <u>Per Client</u>
OVERALL	7,365	229	3%	2,412	11
<u>Designated Agency</u>					
CSAC (Addison)	263	23	9%	431	19
NCSS (Northwest)	816	-	-	-	-
HC (Chittenden)	2,229	98	4%	734	7
LCMH (Lamoille)	278	23	8%	204	9
HCRS (Southeast)	808	-	-	-	-
NKHS (Northeast)	474	38	8%	581	15
CMC (Orange)	417	21	5%	302	14
RMHS (Rutland)	683	-	-	-	-
UCS (Bennington)	922	-	-	-	-
WCMH (Washington)	475	26	5%	160	6

See notes 2, 3 and 15.

Part 3: Vermont Psychiatric Care Hospital

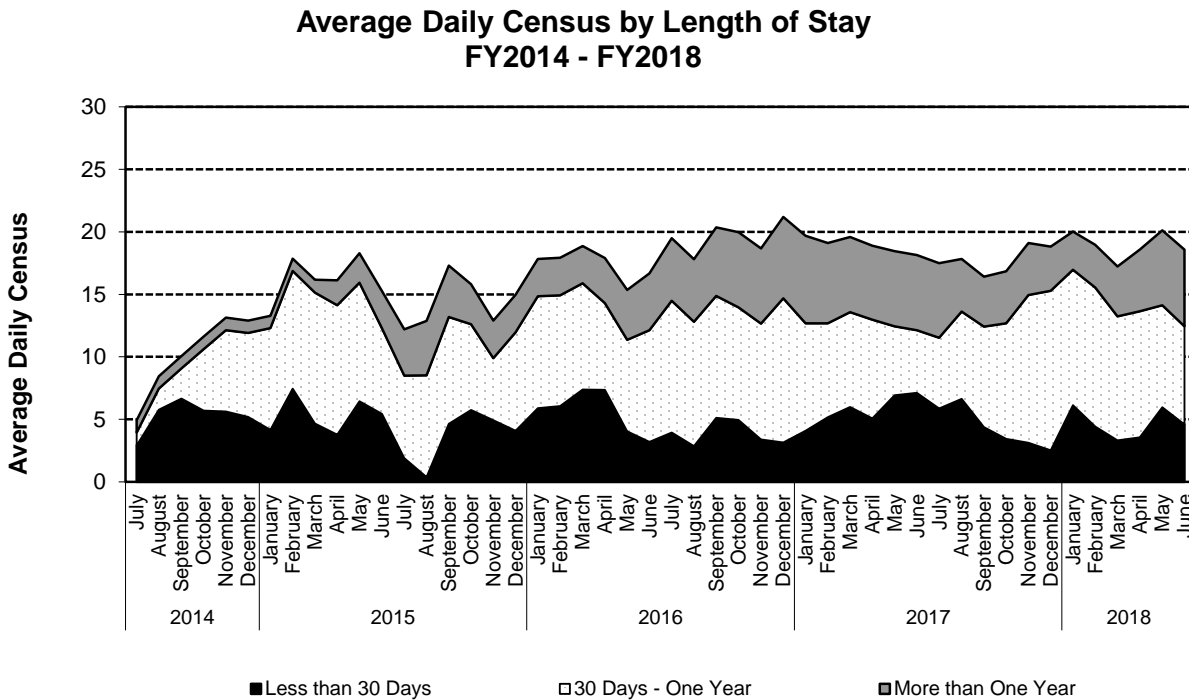


TABLE 3-1-A
Vermont Agency of Human Services
Department of Mental Health

VERMONT PSYCHIATRIC CARE HOSPITAL
AVERAGE DAILY CENSUS
Overall and For Length of Stay Categories
July 2015 through June 2018

	Days Since Admission				
	Overall	<30	30-89	90-365	366+
2015 July	22	2	8	7	4
August	19	0	4	8	4
September	23	5	1	9	4
October	26	6	5	7	3
November	27	5	9	5	3
December	28	4	7	8	3
2016 January	28	6	7	9	3
February	34	6	7	9	3
March	31	7	6	8	3
April	34	7	7	7	4
May	25	4	9	7	4
June	28	3	7	9	5
2016 July	25	4	5	11	5
August	24	3	6	10	5
September	25	5	4	10	5
October	25	5	5	9	6
November	25	3	6	9	6
December	25	3	4	12	7
2017 January	24	4	4	9	7
February	25	5	6	8	6
March	25	6	5	8	6
April	25	5	6	8	6
May	24	7	6	6	6
June	24	7	6	5	6
2017 July	25	6	7	6	6
August	25	7	7	7	4
September	25	4	9	8	4
October	25	3	8	9	4
November	25	3	6	12	4
December	24	3	5	13	4
2018 January	24	6	4	11	3
February	24	4	6	11	3
March	25	3	8	10	4
April	24	4	5	10	5
May	25	6	5	8	6
June	24	5	6	8	6

TABLE 3-2
Vermont Agency of Human Services
Department of Mental Health

VERMONT PSYCHIATRIC CARE HOSPITAL
MONTHLY UTILIZATION
Fiscal Year 2018

<u>Month</u>	x <u>Admissions</u>	x <u>Discharges</u>	Total <u>Patient Days</u>	Average <u>Daily Census</u>
OVERALL	60	60	8,962	24.6
<u>Month</u>				
July	5	7	761	24.5
August	5	3	770	24.8
September	5	5	750	25.0
October	5	5	774	25.0
November	2	2	749	25.0
December	4	7	732	23.6
January	8	5	744	24.0
February	4	4	685	24.5
March	3	3	773	24.9
April	8	9	719	24.0
May	6	5	774	25.0
June	5	5	731	24.4

See note 19.

TABLE 3-3
Vermont Agency of Human Services
Department of Mental Health

VERMONT PSYCHIATRIC CARE HOSPITAL
CATCHMENT AREA AND UTILIZATION
Fiscal Year 2018

	<u>Admissions</u>	<u>Discharges</u>	<u>Total Patient Days</u>	<u>Average Daily Census</u>	<u>Percent of all Patient Days</u>
OVERALL	60	60	8,962	24.6	100%
<u>Catchment Area</u>					
CSAC (Addison)	4	4	280	0.8	3%
NCSS (Northwest)	4	5	402	1.1	4%
HC (Chittenden)	24	20	3,544	9.7	40%
LCC (Lamoille)	-	-	-	-	-
HCRS (Southeast)	5	6	957	2.6	11%
NKHS (Northeast)	4	6	740	2.0	8%
CMC (Orange)	-	-	-	-	-
RMHS (Rutland)	4	5	553	1.5	6%
UCS (Bennington)	5	4	260	0.7	3%
WCMH (Washington)	10	10	2,226	6.1	25%

See notes 2 and 19.

TABLE 3-4
Vermont Agency of Human Services
Department of Mental Health

VERMONT PSYCHIATRIC CARE HOSPITAL
AGE AND UTILIZATION
Fiscal Year 2018

	<u>Admissions</u>	<u>Discharges</u>	<u>Total Patient Days</u>	<u>Average Daily Census</u>	<u>Percent of all Patient Days</u>
OVERALL	60	60	8,962	24.6	100%
<u>Age</u>					
13 - 19	1	1	60	0.2	1%
20 - 34	22	13	2,315	6.3	26%
35 - 49	13	22	1,931	5.3	22%
50 - 64	19	18	3,538	9.7	39%
65+	5	6	1,118	3.1	12%

See notes 4 and 19.

TABLE 3-5
Vermont Agency of Human Services
Department of Mental Health

VERMONT PSYCHIATRIC CARE HOSPITAL
GENDER AND UTILIZATION
Fiscal Year 2018

	<u>Admissions</u>	<u>Discharges</u>	<u>Total Patient Days</u>	<u>Average Daily Census</u>	<u>Percent of all Patient Days</u>
OVERALL	60	60	8,962	24.6	100%
<u>Gender</u>					
Male	43	41	5,657	15.5	63%
Female	17	19	3,305	9.1	37%
Other/Unknown	-	-	-	-	-

See note 19.

TABLE 3-6
Vermont Agency of Human Services
Department of Mental Health

VERMONT PSYCHIATRIC CARE HOSPITAL
DIAGNOSIS AND UTILIZATION
Fiscal Year 2018

ICD 10	<u>Admissions</u>		<u>Discharges</u>		<u>Total</u>	<u>Average</u>	<u>Percent of all</u>
					<u>Patient Days</u>	<u>Daily Census</u>	<u>Patient Days</u>
OVERALL	60		60		8,962	24.6	100%
<u>Diagnosis</u>	<u>Number</u>	<u>Percent</u>	<u>Number</u>	<u>Percent</u>			
Physiological Conditions	-	-	-	-	-	-	-
Psychoactive Substance Use	24	40%	21	35%	2,014	5.5	22%
Schizophrenia Other Non-Mood Psychotic Disorders	40	67%	41	68%	7,705	21.1	86%
Mood [Affective] Disorders	21	35%	20	33%	2,308	6.3	26%
Anxiety and Other Nonpsychotic Mental Disorders	11	18%	9	15%	2,026	5.6	23%
Behavioral Syndromes	1	2%	-	-	650	-	-
Disorders of Adult Personality and Behavior	3	5%	3	5%	40	0.1	0%
Intellectual Disabilities	-	-	-	-	-	-	-
Pervasive and Specific Developmental Disorders	1	2%	1	2%	103	-	1%
Behavioral Emotional Disorders/Child Adolescence	2	3%	2	3%	411	-	-
Unspecified Mental Disorder	-	-	-	-	-	-	-
Deferred	-	-	-	-	-	-	-

As clients may have many diagnoses reported, diagnostic groups do not represent an unduplicated count of clients served.

See notes 7 and 19.

TABLE 3-7
Vermont Agency of Human Services
Department of Mental Health

VERMONT PSYCHIATRIC CARE HOSPITAL
LEGAL STATUS ON ADMISSION AND UTILIZATION
Fiscal Year 2018

	<u>Admissions</u>	<u>Discharges</u>	<u>Total Patient Days</u>	<u>Average Daily Census</u>	<u>Percent of all Patient Days</u>
OVERALL	60	60	8,962	24.6	100%
<u>Legal Status on Admission</u>					
Voluntary	-	-	-	-	-
Emergency	38	40	4,725	12.9	53%
Forensic	14	12	2,336	6.4	26%
Other	8	8	1,901	5.2	21%

See notes 19 and 20.

TABLE 3-8
Vermont Agency of Human Services
Department of Mental Health

VERMONT PSYCHIATRIC CARE HOSPITAL
TYPE OF ADMISSION AND UTILIZATION
Fiscal Year 2018

	<u>Admissions</u>	<u>Discharges</u>	<u>Total Patient Days</u>	<u>Average Daily Census</u>	<u>Percent of all Patient Days</u>
OVERALL	60	60	8,962	24.6	100%
<u>Type of Admission</u>					
First Admission	25	24	3,841	10.5	43%
Readmission	35	36	5,121	14.0	57%

See notes 19 and 21.

TABLE 3-9
Vermont Agency of Human Services
Department of Mental Health

VERMONT PSYCHIATRIC CARE HOSPITAL
CATCHMENT AREA AND LEGAL STATUS OF PATIENTS ADMITTED
Fiscal Year 2018

	<u>Admissions</u>	<u>Legal Status</u>			
		<u>Voluntary</u>	<u>Emergency</u>	<u>Forensic</u>	<u>Other</u>
OVERALL	60	-	63%	23%	13%
<u>Catchment Area</u>					
CSAC (Addison)	4	-	100%	-	-
NCSS (Northwest)	4	-	25%	25%	50%
HC (Chittenden)	24	-	63%	21%	17%
LCC (Lamoille)	—	-	-	-	-
HCRS (Southeast)	5	-	80%	20%	-
NKHS (Northeast)	4	-	75%	25%	-
CMC (Orange)	—	-	-	-	-
RMHS (Rutland)	4	-	-	75%	25%
UCS (Bennington)	5	-	80%	20%	-
WCMH (Washington)	10	-	70%	20%	10%
Unknown	-	-	-	-	-

See notes 2, 19 and 20.

TABLE 3-10
Vermont Agency of Human Services
Department of Mental Health

VERMONT PSYCHIATRIC CARE HOSPITAL
AGE AND LEGAL STATUS OF PATIENTS ADMITTED
Fiscal Year 2018

	<u>Admissions</u>	<u>Legal Status</u>			
		<u>Voluntary</u>	<u>Emergency</u>	<u>Forensic</u>	<u>Other</u>
OVERALL	60	-	63%	23%	13%
<u>Age</u>					
13 - 19	1	-	-	100%	-
20 - 34	22	-	68%	18%	14%
35 - 49	13	-	69%	15%	15%
50 - 64	19	-	53%	32%	16%
65+	5	-	80%	20%	-

See notes 4, 19, and 20.

TABLE 3-11
Vermont Agency of Human Services
Department of Mental Health

VERMONT PSYCHIATRIC CARE HOSPITAL
GENDER AND LEGAL STATUS OF PATIENTS ADMITTED
Fiscal Year 2018

	<u>Admissions</u>	<u>Legal Status</u>			
		<u>Voluntary</u>	<u>Emergency</u>	<u>Forensic</u>	<u>Other</u>
OVERALL	60	-	63%	23%	13%
<u>Gender</u>					
Male	43	-	63%	26%	12%
Female	17	-	65%	18%	18%
Other/Unknown	-	-	-	-	-

See notes 19 and 20.

TABLE 3-12
Vermont Agency of Human Services
Department of Mental Health

VERMONT PSYCHIATRIC CARE HOSPITAL
DIAGNOSIS AND LEGAL STATUS OF PATIENTS ADMITTED
Fiscal Year 2018

<u>ICD 10</u>	<u>Admissions</u>	<u>Legal Status</u>			
		<u>Voluntary</u>	<u>Emergency</u>	<u>Forensic</u>	<u>Other</u>
OVERALL	60	-	63%	23%	13%
<u>Diagnosis</u>					
Physiological Conditions	-	-	-	-	-
Psychoactive Substance Use	24	-	37%	43%	50%
Schizophrenia Other Non-Mood Psychotic Disorders	40	-	71%	50%	75%
Mood [Affective] Disorders	21	-	24%	71%	25%
Anxiety and Other Nonpsychotic Mental Disorders	11	-	18%	21%	13%
Behavioral Syndromes	1	-	3%	-	-
Disorders of Adult Personality and Behavior	3	-	5%	-	13%
Intellectual Disabilities	-	-	-	-	-
Pervasive and Specific Developmental Disorders	1	-	3%	-	-
Behavioral Emotional Disorders/Child Adolescence	2	-	3%	7%	-
Unspecified Mental Disorder	-	-	-	-	-
Deferred	-	-	-	-	-

As clients may have many diagnoses reported, diagnostic groups do not represent an unduplicated count of clients served.

See notes 7, 19 and 20.

TABLE 3-13
Vermont Agency of Human Services
Department of Mental Health

VERMONT PSYCHIATRIC CARE HOSPITAL
TYPE OF ADMISSION AND LEGAL STATUS OF PATIENTS ADMITTED
Fiscal Year 2018

	<u>Admissions</u>	<u>Legal Status</u>			
		<u>Voluntary</u>	<u>Emergency</u>	<u>Forensic</u>	<u>Other</u>
OVERALL	60	-	63%	23%	13%
<u>Type of Admission</u>					
First Admission	25	-	48%	40%	12%
Readmission	35	-	74%	11%	14%

See notes 19, 20 and 21.

TABLE 3-14
Vermont Agency of Human Services
Department of Mental Health

VERMONT PSYCHIATRIC CARE HOSPITAL
CATCHMENT AREA AND DISCHARGE RATE OF PATIENTS ADMITTED
Fiscal Year 2018

	<u>Admissions</u>	<u>Percent Discharged Within</u>			
		<u>1 Week</u>	<u>2 Weeks</u>	<u>1 Month</u>	<u>3 Months</u>
OVERALL	60	7%	10%	25%	58%
<u>Catchment Area</u>					
CSAC (Addison)	4	-	-	25%	75%
NCSS (Northwest)	4	25%	25%	50%	50%
HC (Chittenden)	24	4%	8%	17%	54%
LCC (Lamoille)	-	-	-	-	-
HCRS (Southeast)	5	40%	40%	40%	80%
NKHS (Northeast)	4	-	-	-	50%
CMC (Orange)	-	-	-	-	-
RMHS (Rutland)	4	-	25%	25%	50%
UCS (Bennington)	5	-	-	40%	60%
WCMH (Washington)	10	-	-	30%	60%
Unknown	-	-	-	-	-

See notes 2, 19 and 22.

TABLE 3-15
Vermont Agency of Human Services
Department of Mental Health

VERMONT PSYCHIATRIC CARE HOSPITAL
AGE AND DISCHARGE RATE OF PATIENTS ADMITTED
Fiscal Year 2018

	<u>Admissions</u>	<u>Percent Discharged Within</u>			
		<u>1 Week</u>	<u>2 Weeks</u>	<u>1 Month</u>	<u>3 Months</u>
OVERALL	60	7%	10%	25%	58%
<u>Age</u>					
13 - 19	1	-	-	-	100%
20 - 34	22	5%	5%	14%	41%
35 - 49	13	15%	23%	46%	77%
50 - 64	19	5%	11%	26%	68%
65+	5	-	-	20%	40%

See notes 2, 19 and 22.

TABLE 3-16
Vermont Agency of Human Services
Department of Mental Health

VERMONT PSYCHIATRIC CARE HOSPITAL
GENDER AND DISCHARGE RATE OF PATIENTS ADMITTED
Fiscal Year 2018

	<u>Admissions</u>	<u>Percent Discharged Within</u>			
		<u>1 Week</u>	<u>2 Weeks</u>	<u>1 Month</u>	<u>3 Months</u>
OVERALL	60	7%	10%	25%	58%
<u>Gender</u>					
Male	43	5%	5%	19%	58%
Female	17	12%	24%	41%	59%
Other/Unknown	-	-	-	-	-

See notes 19 and 22.

TABLE 3-17
Vermont Agency of Human Services
Department of Mental Health

VERMONT PSYCHIATRIC CARE HOSPITAL
DIAGNOSIS AND DISCHARGE RATE OF PATIENTS ADMITTED
Fiscal Year 2018

	<u>ICD 10</u>	<u>Admissions</u>	<u>Percent Discharged Within</u>			
			<u>1 Week</u>	<u>2 Weeks</u>	<u>1 Month</u>	<u>3 Months</u>
OVERALL		60	7%	10%	25%	58%
<u>Diagnosis</u>						
Physiological Conditions		-	-	-	-	-
Psychoactive Substance Use		24	4%	8%	42%	75%
Schizophrenia Other Non-Mood Psychotic Disorders		40	5%	5%	10%	48%
Mood [Affective] Disorders		21	5%	14%	43%	67%
Anxiety and Other Nonpsychotic Mental Disorders		11	18%	27%	45%	45%
Behavioral Syndromes		1	-	-	-	-
Disorders of Adult Personality and Behavior		3	-	33%	100%	100%
Intellectual Disabilities		-	-	-	-	-
Pervasive and Specific Developmental Disorders		1	-	-	-	-
Behavioral Emotional Disorders/Child Adolescence		2	-	-	-	-
Unspecified Mental Disorder		-	-	-	-	-
Deferred		-	-	-	-	-

As clients may have many diagnoses reported, diagnostic groups do not represent an unduplicated count of clients served.

See notes 7, 19 and 22.

TABLE 3-18
Vermont Agency of Human Services
Department of Mental Health

VERMONT PSYCHIATRIC CARE HOSPITAL
LEGAL STATUS AND DISCHARGE RATE OF PATIENTS ADMITTED
Fiscal Year 2018

	<u>Admissions</u>	<u>Percent Discharged Within</u>			
		<u>1 Week</u>	<u>2 Weeks</u>	<u>1 Month</u>	<u>3 Months</u>
OVERALL	60	7%	10%	25%	58%
<u>Legal Status</u>					
Voluntary	-	-	-	-	-
Emergency	38	11%	11%	29%	63%
Forensic	14	-	7%	7%	57%
		-			
Other	8	-	13%	38%	38%

See notes 19, 20 and 22.

TABLE 3-19
Vermont Agency of Human Services
Department of Mental Health

VERMONT PSYCHIATRIC CARE HOSPITAL
TYPE OF ADMISSION AND DISCHARGE RATE OF PATIENTS ADMITTED
Fiscal Year 2018

	<u>Admissions</u>	<u>Percent Discharged Within</u>			
		<u>1 Week</u>	<u>2 Weeks</u>	<u>1 Month</u>	<u>3 Months</u>
OVERALL	60	7%	10%	25%	58%
<u>Type of Admission</u>					
First Admisssion	25	4%	8%	16%	52%
Readmission	35	9%	11%	31%	63%

See notes 19, 21 and 22.

TABLE 3-20
Vermont Agency of Human Services
Department of Mental Health

VERMONT PSYCHIATRIC CARE HOSPITAL
CATCHMENT AREA AND LENGTH OF STAY OF PATIENTS IN RESIDENCE AT END OF YEAR
Fiscal Year 2018

	<u>Patients at end of Year</u>	<u>Median Length of Stay</u>	<u>Mean Length of Stay</u>
OVERALL	25	3 months	8 months
<u>Catchment Area</u>			
CSAC (Addison)	-	-	-
NCSS (Northwest)	-	-	-
HC (Chittenden)	14	3 months	5 months
LCC (Lamoille)	-	-	-
HCRS (Southeast)	2	11 months	11 months
NKHS (Northeast)	1	1 month	1 month
CMC (Orange)	-	-	-
RMHS (Rutland)	1	11 days	11 days
UCS (Bennington)	1	26 days	26 days
WCMH (Washington)	6	1 year	1 year, 9 months

See notes 2 and 23.

TABLE 3-21
Vermont Agency of Human Services
Department of Mental Health

VERMONT PSYCHIATRIC CARE HOSPITAL
AGE AND LENGTH OF STAY OF PATIENTS IN RESIDENCE AT END OF YEAR
Fiscal Year 2018

	<u>Patients at end of Year</u>	<u>Median Length of Stay</u>	<u>Mean Length of Stay</u>
OVERALL	25	3 months	8 months
<u>Age</u>			
13 - 19	-	-	-
20 - 34	11	2 months	3 months
35 - 49	2	10 months	10 months
50 - 64	10	4 months	1 year, 2 months
65+	2	6 months	6 months

See notes 4 and 23.

TABLE 3-22
Vermont Agency of Human Services
Department of Mental Health

VERMONT PSYCHIATRIC CARE HOSPITAL
GENDER AND LENGTH OF STAY OF PATIENTS IN RESIDENCE AT END OF YEAR
Fiscal Year 2018

	<u>Patients at end of Year</u>	<u>Median Length of Stay</u>	<u>Mean Length of Stay</u>
OVERALL	25	3 months	8 months
<u>Gender</u>			
Male	17	2 months	7 months
Female	8	6 months	11 months
Other/Unknown	-	-	-

See note 23.

TABLE 3-23
Vermont Agency of Human Services
Department of Mental Health

VERMONT PSYCHIATRIC CARE HOSPITAL
DIAGNOSIS AND LENGTH OF STAY OF PATIENTS IN RESIDENCE AT END OF YEAR
Fiscal Year 2018

	Patients at end of Year	<u>Median Length of Stay</u>	<u>Mean Length of Stay</u>
<u>ICD 10</u>			
OVERALL	25	3 months	8 months
<u>Diagnosis</u>			
Physiological Conditions	-	-	-
Psychoactive Substance Use	5	22 days	2 months
Schizophrenia Other Non-Mood Psychotic Disorders	23	2 months	9 months
Mood [Affective] Disorders	3	14 days	1 month
Anxiety and Other Nonpsychotic Mental Disorders	3	4 months	1 year, 1 month
Behavioral Syndromes	-	-	-
Disorders of Adult Personality and Behavior	-	-	-
Intellectual Disabilities	-	-	-
Pervasive and Specific Developmental Disorders	-	-	-
Behavioral Emotional Disorders/Child Adolescence	-	-	-
Unspecified Mental Disorder	-	-	-
Deferred	-	-	-

As clients may have many diagnoses reported, diagnostic groups do not represent an unduplicated count of clients served.

See notes 7 and 23.

TABLE 3-24
Vermont Agency of Human Services
Department of Mental Health

VERMONT PSYCHIATRIC CARE HOSPITAL
LEGAL STATUS AND LENGTH OF STAY OF PATIENTS IN RESIDENCE AT END OF YEAR
Fiscal Year 2018

	<u>Patients at end of Year</u>	<u>Median Length of Stay</u>	<u>Mean Length of Stay</u>
OVERALL	25	3 months	8 months
<u>Legal Status</u>			
Voluntary	-	-	-
Emergency	12	2 months	5 months
Forensic	6	5 months	6 months
Other	7	4 months	1 year, 5 months

See notes 20 and 23.

TABLE 3-25
Vermont Agency of Human Services
Department of Mental Health

VERMONT PSYCHIATRIC CARE HOSPITAL
TYPE OF ADMISSION AND LENGTH OF STAY OF PATIENTS IN RESIDENCE AT END OF YEAR
Fiscal Year 2018

	<u>Patients at end of Year</u>	<u>Median Length of Stay</u>	<u>Mean Length of Stay</u>
OVERALL	25	3 months	8 months
<u>Type of Admission</u>			
First Admission	12	2 months	11 months
Readmission	13	4 months	6 months

See notes 21 and 23.

Part 4: Historical Overview

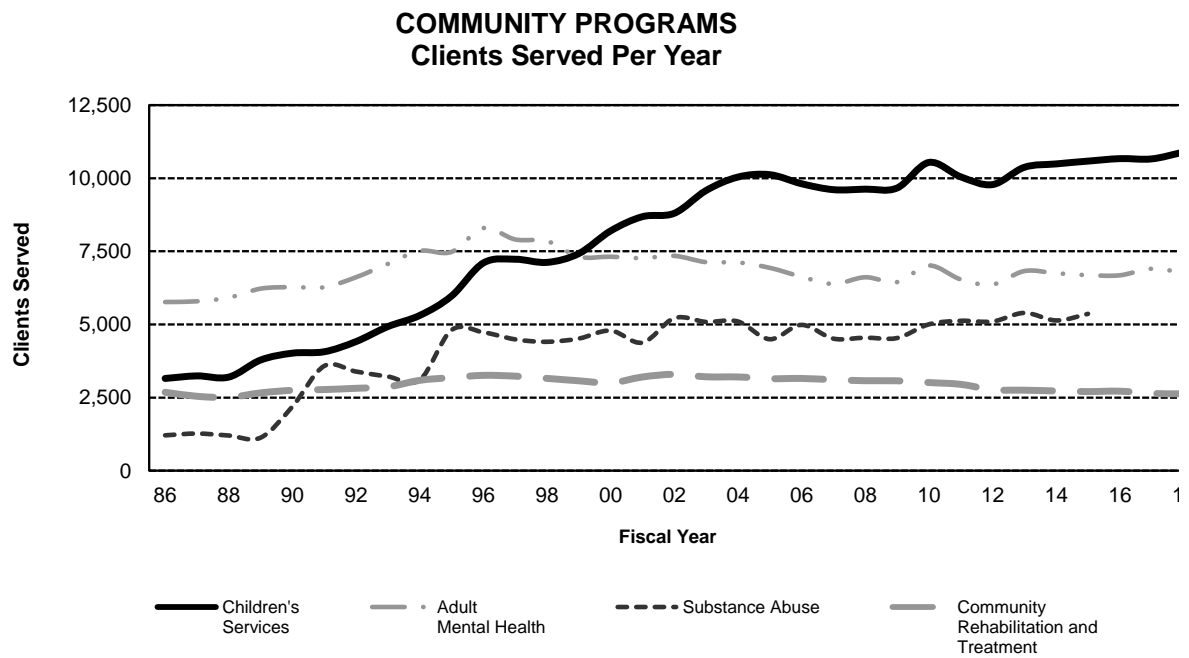


TABLE 4-1
Vermont Agency of Human Services
Department of Mental Health

NUMBER OF CLIENTS SERVED: FY1989 - FY2018
by Clients' Primary Program Assignment

<u>Fiscal Year</u>	<u>Children's Services</u>	<u>Adult MH Outpatient</u>	<u>Community Rehabilitation</u>	<u>Substance Abuse</u>	<u>Unassigned</u>	<u>State Hospital</u>
1989	3,734	6,224	2,660	1,128	687	523
1990	3,965	6,276	2,748	2,193	518	455
1991	4,066	6,271	2,773	3,580	484	407
1992	4,281	6,615	2,817	3,388	416	389
1993	4,703	7,071	2,867	3,219	428	311
1994	5,167	7,516	3,089	3,104	393	333
1995	5,971	7,480	3,183	4,807	437	323
1996	7,103	7,711	3,259	4,430	487	305
1997	7,230	7,907	3,232	4,490	577	294
1998	7,122	7,851	3,155	4,407	734	327
1999	7,424	7,317	3,073	4,518	1,314	246
2000	8,204	7,324	3,003	4,789	1,972	257
2001	8,670	7,189	3,259	4,357	2,136	244
2002	8,967	7,345	3,296	5,217	2,218	254
2003	9,749	7,130	3,210	5,087	2,360	234
2004	10,040	7,120	3,205	5,101	2,396	231
2005	10,122	6,936	3,145	4,495	2,898	218
2006	9,812	6,631	3,154	4,985	2,540	216
2007	9,609	6,384	3,109	4,515	1,887	231
2008	9,627	6,614	3,076	4,548	1,950	255
2009	9,665	6,448	3,073	4,536	2,270	246
2010	10,541	7,015	3,013	5,004	3,459	261
2011	10,048	6,541	2,952	5,125	4,321	254
2012	9,783	6,366	2,769	5,101	5,485	87
2013	10,374	6,826	2,752	5,395	5,668	26
2014	10,490	6,752	2,726	5,137	5,411	36
2015	10,585	6,685	2,704	5,363	5,205	67
2016	10,670	6,681	2,718	-	4,556	73
2017	10,661	6,905	2,640	-	4,267	88
2018	10,892	6,773	2,628	-	4,807	79

See notes 1, 2 and 3.

TABLE 4-2
Vermont Agency of Human Services
Department of Mental Health

CHILDREN'S SERVICES PROGRAMS
NUMBER OF CLIENTS SERVED: FY1989 - FY2018
by Designated Agency

<u>Fiscal Year</u>	<u>CSAC</u>	<u>NCSS</u>	<u>HC</u>	<u>LCMH</u>	<u>HCRS</u>	<u>NKHS</u>	<u>CMC</u>	<u>RMHS</u>	<u>UCS</u>	<u>WCMH</u>	<u>NFI</u>	<u>Total</u>
1989	645	259	433	143	628	399	309	325	218	315	60	3,734
1990	736	305	461	146	694	379	258	369	243	326	48	3,965
1991	739	297	470	131	773	455	275	323	252	299	52	4,066
1992	645	353	422	174	837	480	291	379	266	382	52	4,281
1993	680	381	465	207	975	484	256	478	248	473	56	4,703
1994	733	416	496	223	1,077	487	289	616	277	483	70	5,167
1995	805	517	653	166	1,162	681	346	672	297	566	106	5,971
1996	833	545	977	171	1,330	823	490	754	422	609	149	7,103
1997	684	520	1,033	203	1,435	867	525	694	476	570	223	7,230
1998	642	485	1,027	230	1,363	967	543	622	463	525	255	7,122
1999	746	547	1,220	169	1,303	1,005	521	696	514	564	139	7,424
2000	788	756	1,281	209	1,482	976	636	696	572	701	107	8,204
2001	810	788	1,577	188	1,216	964	944	711	565	715	192	8,670
2002	954	853	1,702	219	1,298	1,011	513	709	550	716	442	8,967
2003	859	924	1,621	546	1,573	1,045	583	847	556	767	428	9,749
2004	861	1,126	1,577	546	1,704	1,026	543	933	553	759	412	10,040
2005	870	1,164	1,989	421	1,617	1,054	466	951	456	716	418	10,122
2006	848	1,128	1,891	489	1,470	803	584	1,054	523	693	329	9,812
2007	909	1,161	2,029	430	1,285	806	575	961	563	769	121	9,609
2008	804	1,215	1,977	388	1,375	827	563	936	620	741	181	9,627
2009	691	1,243	1,951	359	1,455	947	542	915	573	764	225	9,665
2010	777	1,243	2,092	426	1,630	961	595	1,013	548	913	343	10,541
2011	805	1,131	1,813	361	1,645	877	611	1,025	464	930	386	10,048
2012	847	1,049	1,639	329	1,672	952	615	1,030	456	897	297	9,783
2013	1,164	1,247	1,573	318	1,695	1,001	592	962	500	956	366	10,374
2014	1,109	1,463	1,480	337	1,640	997	621	915	546	1,023	359	10,490
2015	1,025	1,582	1,662	338	1,484	976	671	918	524	1,033	372	10,585
2016	913	1,743	1,872	296	1,375	821	687	906	449	1,007	601	10,670
2017	930	1,720	1,943	346	1,270	740	614	976	436	1,121	565	10,661
2018	981	1,874	1,981	401	1,216	642	590	982	524	1,085	616	10,892

See notes 1, 2 and 3.

TABLE 4-3
Vermont Agency of Human Services
Department of Mental Health

ADULT MENTAL HEALTH OUTPATIENT PROGRAMS
NUMBER OF CLIENTS SERVED: FY1989 - FY2018
by Designated Agency

<u>Fiscal Year</u>	<u>CSAC</u>	<u>NCSS</u>	<u>HC</u>	<u>LCMH</u>	<u>HCRS</u>	<u>NKHS</u>	<u>CMC</u>	<u>RMHS</u>	<u>UCS</u>	<u>WCMH</u>	<u>PATH</u>	<u>Total</u>
1989	541	689	457	225	1,267	689	510	657	479	710	-	6,224
1990	558	774	477	281	1,249	733	340	692	572	600	-	6,276
1991	582	731	526	204	1,318	747	346	732	554	531	-	6,271
1992	586	804	517	231	1,434	777	405	746	596	519	-	6,615
1993	582	793	1,173	259	1,420	692	339	711	511	591	-	7,071
1994	677	874	1,286	263	1,493	704	270	835	486	628	-	7,516
1995	679	879	1,245	175	1,577	776	202	806	530	611	-	7,480
1996	588	807	1,293	216	1,581	785	269	799	635	738	-	7,711
1997	623	818	1,337	288	1,579	667	282	782	778	753	-	7,907
1998	628	710	1,408	326	1,504	622	276	818	804	755	-	7,851
1999	739	679	1,047	281	1,134	752	273	923	681	808	-	7,317
2000	741	940	792	332	1,108	815	270	812	791	723	-	7,324
2001	800	948	700	326	679	813	291	958	878	796	-	7,189
2002	809	953	686	283	718	971	369	888	896	772	-	7,345
2003	782	967	653	308	894	841	477	760	866	582	-	7,130
2004	632	1,019	690	208	962	927	508	694	883	597	-	7,120
2005	569	1,037	723	117	879	997	415	814	763	622	-	6,936
2006	564	1,075	658	123	681	706	560	775	851	638	-	6,631
2007	631	1,090	547	146	694	687	520	642	803	624	-	6,384
2008	587	1,122	471	214	653	824	541	632	857	713	-	6,614
2009	460	1,104	522	242	662	1,000	556	261	840	801	-	6,448
2010	664	1,028	590	227	710	1,032	605	286	860	1,013	-	7,015
2011	687	864	516	32	767	978	640	236	864	957	-	6,541
2012	755	646	489	55	749	1,025	642	247	809	949	-	6,366
2013	907	850	586	165	927	1,035	616	226	691	823	-	6,826
2014	728	805	478	157	938	1,191	612	186	647	1,010	-	6,752
2015	638	817	553	138	954	1,022	617	193	593	1,041	119	6,685
2016	539	759	471	174	995	1,015	575	207	649	1,169	128	6,681
2017	540	798	527	160	914	1,013	541	251	682	1,348	131	6,905
2018	616	834	599	165	862	839	540	299	589	1,284	146	6,773

See notes 1, 2 and 3.

TABLE 4-4
Vermont Agency of Human Services
Department of Mental Health

COMMUNITY REHABILITATION AND TREATMENT PROGRAMS
NUMBER OF CLIENTS SERVED: FY1989 - FY2018
by Designated Agency

<u>Fiscal Year</u>	<u>CSAC</u>	<u>NCSS</u>	<u>HC</u>	<u>LCMH</u>	<u>HCRS</u>	<u>NKHS</u>	<u>CMC</u>	<u>RMHS</u>	<u>UCS</u>	<u>WCMH</u>	<u>PATH</u>	<u>Total</u>
1989	115	170	457	169	364	331	82	301	99	572	-	2,660
1990	119	168	509	181	358	333	77	277	118	608	-	2,748
1991	110	164	499	139	362	414	81	294	135	575	-	2,773
1992	122	166	519	145	367	419	83	281	168	547	-	2,817
1993	123	164	550	146	341	446	79	268	215	535	-	2,867
1994	132	196	587	141	357	481	84	275	214	622	-	3,089
1995	136	226	617	139	339	492	109	294	232	599	-	3,183
1996	146	210	623	133	402	455	122	316	225	627	-	3,259
1997	149	217	629	129	376	455	120	319	197	641	-	3,232
1998	154	243	635	130	344	434	116	313	190	596	-	3,155
1999	172	233	647	138	395	397	124	317	187	463	-	3,073
2000	170	203	659	146	390	373	116	324	189	433	-	3,003
2001	165	228	669	159	434	417	172	335	202	478	-	3,259
2002	166	244	648	156	428	442	182	349	192	489	-	3,296
2003	166	241	653	147	411	424	178	324	187	479	-	3,210
2004	173	250	671	138	429	411	169	310	192	462	-	3,205
2005	175	225	672	145	412	403	169	308	184	452	-	3,145
2006	174	228	669	143	414	400	187	310	183	446	-	3,154
2007	184	240	660	142	385	376	188	302	189	443	-	3,109
2008	177	232	692	133	382	358	199	291	178	434	-	3,076
2009	187	233	685	138	384	357	192	284	184	429	-	3,073
2010	189	236	677	141	375	319	187	292	165	432	-	3,013
2011	188	230	687	143	387	288	173	282	158	416	-	2,952
2012	187	234	655	140	400	254	169	274	156	300	-	2,769
2013	182	223	657	122	406	228	152	267	156	359	-	2,752
2014	178	229	652	131	389	226	139	265	159	358	-	2,726
2015	170	225	650	125	382	218	125	266	156	337	50	2,704
2016	166	229	620	119	374	238	164	267	153	339	49	2,718
2017	165	227	610	120	382	232	108	268	142	339	47	2,640
2018	153	225	615	132	378	227	100	274	142	335	47	2,628

See notes 1, 2 and 3.

Part 5: Notes

OVERVIEW

1. The Scope of This Report

The Vermont Department of Mental Health (DMH) is responsible for a variety of publicly funded outpatient, inpatient, residential, and support services provided to children and adults who have an emotional disturbance, mental illness, and/or substance abuse disorder. DMH contracts with one designated agency (DA) in each geographic region of the state to be responsible for ensuring needed services are available through local planning, support coordination, and outcomes monitoring within their region. A specialized service agency (SSA) is a separate entity also contracted by DMH that provides community services to a specific population. This report describes clients served and services provided during FY2018 by the Vermont Psychiatric Care Hospital (VPCH), ten designated agencies, and two specialized service agencies for mental health services. Specialized Service Agencies that provide services under contract with the Division of Alcohol and Drug Abuse Program (ADAP) Department of Aging and Independent Living (DAIL) are not included in this report. On intake, most clients are assigned to one of these programs within the agency (primary program assignment) although the services they receive may be provided by more than one program in that agency (program of service).

The Department of Mental Health is responsible for the Vermont Psychiatric Care Hospital (VPCH) and mental health programs at Vermont's designated agencies, including Children's Services Programs, Adult Mental Health Outpatient Programs, Community Rehabilitation and Treatment Programs, and Emergency Services Programs. Many community mental health designated agencies also provide substance abuse services under contract with the State's Division of Alcohol and Drug Abuse Programs (ADAP) in the Department of Health. Data on this latter type of service is no longer contained in this report.

Prior to the arrival of Tropical Storm Irene in August 2011, the Vermont State Hospital had been a state-operated psychiatric hospital located in Waterbury, Vermont. The Vermont State Hospital (VSH) had served Vermont Residents with serious mental illness since the 1890s. In the wake of Tropical Storm Irene, VSH ceased to exist as a center of treatment. During its last years, VSH served patients on both a short-term and a long-term basis. Short-term patients included adults who were experiencing an acute psychotic episode and criminal defendants referred to the hospital for psychiatric evaluation of sanity and/or competency to stand trial. Longer-term patients included those with a chronic mental illness who continued to be too actively psychotic to be integrated into the community and patients whose mental disorders and physical handicaps required a higher or more specialized level of care than is available in the community. Inpatient behavioral health care continues to be provided by five regional hospitals in Vermont and the Brattleboro Retreat; data on clients served by these facilities are not included in this report.

In January 2013, the Department of Mental Health opened Green Mountain Psychiatric Care Center (GMPCC), an interim eight bed psychiatric facility in Morrisville, Vermont, to serve as a center of treatment for short-term psychiatric stays. The State changed the name of this State Hospital to the Vermont Psychiatric Care Hospital (VPCH) in the latter part of FY2014. Construction was completed on a new state psychiatric hospital in Berlin, Vermont in July 2014. In June 2013, Middlesex Therapeutic Community Residence (MTCR) opened with seven beds to serve as a center of treatment for long-term patients who require a more specialized level of care than is available in the community.

Children's Services Programs provide services to children and families who are undergoing emotional or psychological distress or are having problems adjusting to changing life situations. These programs primarily provide outpatient services (clinical, service planning, community supports, crisis and respite services), although several agencies also provide residential services for children and adolescents who have a severe emotional disturbance.

Adult Mental Health Outpatient Programs serve individuals 18 years of age and over who do not have prolonged serious disabilities but who are experiencing emotional, behavioral, or adjustment problems severe enough to warrant professional attention. Services offered include clinical, service planning and community support services and some crisis services.

Community Rehabilitation and Treatment (CRT) Programs serve adults with severe and persistent mental illness. In addition to regular clinical services, CRT Programs provide day treatment services, service planning, community supports, supported employment and a variety of housing services to clients who have a major mental illness.

Emergency Services Programs serve individuals who are experiencing an acute mental health crisis. Emergency services include diagnostic and psychotherapeutic services such as evaluation of the client and the circumstances leading to the crisis, crisis counseling, screening for hospitalization, referral and follow-up. These services are provided on a 24-hour a day, 7-day-per-week basis with both telephone and face-to-face services available as needed.

The Division of Alcohol and Drug Abuse Programs (ADAP) is responsible for providing services to people with alcohol and/or drug abuse problems and their families in a community setting through community mental health centers and other providers.

2. Community Provider Agencies

Community-based services are provided to individuals throughout the state through contracts with nonprofit community provider agencies. The community provider agencies are designated by DMH at differing levels: designated agencies (DAs) and specialized service agencies (SSAs). The agencies and the areas they serve are described below.

Designated Agencies

DMH funds community mental health services provided by designated agencies (DAs). Each DA serves a specific region or catchment area. Mental health service catchment areas broadly align with counties with the exceptions noted below. Together these mental health areas cover the entire state. Populations for these catchment areas are based on National Census figures obtained from the Vermont Department of Health.

The Counseling Service of Addison County (CSAC) serves all of Addison County except the towns of Granville and Hancock.

Northwestern Counseling and Support Services (NCSS) serves Franklin County and Grand Isle County.

The HowardCenter (HC) serves Chittenden County.

Lamoille County Mental Health Services (LCMH) serves Lamoille County. For Children's Services, Lamoille also serves the towns of Craftsbury, Greensboro, Hardwick, and Stannard from the Northeast Kingdom, and Woodbury from Washington County.

Health Care and Rehabilitation Services of Southeastern Vermont (HCRS) serves all of Windham County and Windsor County except the towns of Bethel, Rochester, Royalton, Sharon and Stockbridge.

Northeast Kingdom Human Services (NKHS) serves Caledonia, Essex and Orleans Counties except the towns of Craftsbury, Greensboro, Hardwick, and Stannard for Children's Services.

The Clara Martin Center (CMC) serves recipients in Orange County (except the towns of Orange, Williamstown, and Washington, which are served by WCMH), the towns of Granville and Hancock in Addison County, and the towns of Bethel, Rochester, Royalton, Sharon and Stockbridge in Windsor County.

Rutland Mental Health Services (RMHS) serves Rutland County.

United Counseling Services (UCS) serves Bennington County.

Washington County Mental Health Services (WCMH) serves Washington County as well as the towns of Orange, Williamstown, and Washington from Orange County, with the exception of Woodbury for Children's Services.

Specialized Service Agencies

DMH contracts with two SSAs that provides community mental health services to a specific population.

The Northeastern Family Institute (NFI) in Williston provides intensive residential treatment for children and adolescents from all parts of Vermont who are experiencing a severe emotional disturbance.

Pathways serves a statewide population of consumers experiencing homelessness or early crisis, and veterans needing short-term supportive services

3. Clients Served

This report is based on a complete enumeration of clients served by Children's Services Programs, Adult Mental Health Outpatient Programs, Community Rehabilitation and Treatment Programs, Emergency Service Programs, and VPCH. Although clients may receive services from more than one of these community-based programs, each client has a primary program assignment within the agency providing the services. Clients involved in other programs such as

Retired Senior Volunteers Programs (RSVP), Head Start Programs, and Countermeasures Regarding Alcohol Safety on the Highway (CRASH) Programs are included only if they were also served by one of the programs listed above. It should be noted that the clients and services reported for NFI include only those who receive DMH-funded services.

Tables that describe clients categorize them according to their primary program assignment rather than the program(s) by which they were served. Because of this, the numbers of clients served within each community service provider agency and VPCH represent an unduplicated count of individual clients. Clients served by more than one program at a provider agency are counted only once and categorized under their most recent submitted primary program assignment. Individuals who were served by more than one provider agency, however, are counted more than once, as are individuals served by a provider agency and VPCH. Table entries with the symbol "-" indicate either "no data reported" or "not applicable." Due to rounding, table entries with 0% indicate percentages that are less than 0.5%.

Clients who had not been assigned to a specific program as of the end of the fiscal year are reported as "unassigned" in the tables based on primary program assignment.

Tables that describe services provided by programs at community provider agencies categorize clients according to the program by which services were provided. Because of this, clients who received services from more than one program are counted more than once in tables which describe the services provided. Thus, the client totals in the tables that describe services do not equal the client totals in the tables that describe demographics.

It should be kept in mind that many DAs do not register or record mental health services to every individual who might be seen in the course of client treatment. Collaterals, such as parents, children, or spouses of registered clients, for instance, frequently receive services coincident to services to the primary client. Family therapy is especially likely to involve individuals who do not become registered clients so that the number of clients reported would be substantially fewer than the actual total number of individuals seen.

The rates of clients served per 1,000 population in Table 1-2 are presented as a comparable standardized measure of the proportion of the residents of specified geographical regions who are served by specified programs. This utilization rate is computed according to the formula:

$$R = \frac{1,000 C}{P}$$

where R is the rate of clients served per 1,000 population, C is the number of clients served, and P is the age-specific population of the geographic area in question. Children's Services utilization rates are based on the catchment area population of residents under 18 years of age. CRT, Adult Mental Health Outpatient, and VPCH service utilization rates are based on adult population counts. Total population counts are used to calculate utilization rates for unassigned clients. Note that in earlier versions of this report (prior to FY2001) all program utilization rates were based on total population figures. Counts for the catchment area populations were based on National Census figures (July 1, 2016) obtained from the Vermont Department of Health which are adjusted for each fiscal year and catchment area.

Vermont Population of Service Areas

Provider/Catchment Area		Youth < 18	Adult 18+	Total
Statewide		116,825	506,832	623,657
CSAC	Addison	6,245	29,893	36,138
NCSS	Franklin/Grand Isle	12,241	43,782	56,023
HC	Chittenden	29,221	133,151	162,372
LCMH	Lamoille	6,370	20,122	26,492
HCRS	Southeast	16,296	73,558	89,854
NKHS	Northeast	11,232	51,000	62,232
CMC	Orange	5,887	26,230	32,117
RMHS	Rutland	10,539	48,548	59,087
UCS	Bennington	6,774	28,820	35,594
WCMH	Washington	12,020	51,728	63,748

4. Age

The age of clients was calculated from their date of birth and is current as of December 31, 2017, the midpoint of the period covered by this report.

5. Income

Income is based on clients' or their families' report of gross annual household income. The income reported should include all sources of income including Supplemental Security Income (SSI) benefits, welfare payments, unemployment compensation, alimony and child support payments, in addition to income earned from employment or investment. All income from all members of a residential/economic unit should be included. If a client lives with unrelated others with whom he or she does not pool financial resources, income of the other resident(s) should not be counted toward the client's income.

6. Responsibility for Fee

Responsibility for fee is reported for five categories: Medicaid, Medicare, Other Insurance, State Agency Contract, and Uninsured. Providers can report up to three payers for each client. Therefore, the categories are not mutually exclusive and clients may be counted in more than one category. "Medicaid" includes all clients who are covered by Medicaid, including people on the Medicaid Waiver. "Medicare" includes all clients who are covered by Medicare. "Other Insurance" includes all clients with other third-party insurance excluding Medicaid and Medicare. This category includes private insurance, service contracts, Veterans Administration, Civilian Health and Medical Program of the Uniformed Services (CHAMPUS), and worker's compensation. "State Agency Contracts" includes clients whose services are partly funded by DMH, ADAP, DCF, DAIL, and Vocational Rehabilitation contracts. Finally, the "Uninsured/unknown" category is the residual category for clients who are not reported in any of the other categories noted above.

Medical insurance does not necessarily cover mental health services and, even when these services are covered, the reimbursement may be substantially less than the cost of the services. Because of this, insured clients should be considered partly self-paying clients as well.

Information on responsibility for fee presented here is current as of the end of the report period (June 30, 2018). Since insurance coverage is subject to change, the insurance coverage reported here may not have been in effect for the

entire year of the report. The insurance coverage data currently available in the VPCH EHR is considered billing data and not patient coverage data. This data was used starting in the FY17 Statistical Report.

7. Diagnosis

On October 1, 2015, the National Center for Health Statistics (NCHS) implemented the International Statistical Classification of Diseases and Related Health Problems, 10th revision (ICD-10) to replace the earlier version of this classification referred to as ICD-9. New diagnostic categories included in this report are based on the American Psychiatric Association's *Diagnostic and Statistical Manual of Mental Disorders*, Fifth Edition (DSM-V). Specific diagnoses have been grouped into diagnostic categories according to the following specifications:

ICD-10 Diagnosis:

Mental disorders due to known physiological conditions F01-F09

Mental and behavioral disorders due to psychoactive substance use F10-F19

Schizophrenia, schizotypal, delusional, and other non-mood psychotic disorders F20-F29

Mood [affective] disorders F30-F39

Anxiety, dissociative, stress-related, somatoform and other nonpsychotic mental disorders F40-F48

Behavioral syndromes associated with physiological disturbances and physical factors F50-F59

Disorders of adult personality and behavior F60-F69

Intellectual Disabilities F70-F79

Pervasive and specific developmental disorders F80-F89

Behavioral and emotional disorders with onset usually occurring in childhood and adolescence F90-F98

Unspecified mental disorder F99

8. Problems

Part of the intake process for each client is a problem checklist. The problem areas are not mutually exclusive, as an individual may have more than one type of problem. Since this assessment is conducted only at intake, the problems may not be current for long-term clients. Problems apparent at intake may have been resolved and/or new problems may have arisen. Also, clients admitted prior to FY2002 were not assessed with reference to Mood, Criminal, Victim and Runaway. This information is not collected for clients treated at VPCH.

9. Length of Stay

Information on clients' length of stay is based on admission dates reported by community provider agencies and VPCH. These dates represent the most recent admission for the clients, not the date of their first admission. For this reason, these figures may substantially understate the total length of time clients had been in treatment.

Community provider agencies vary in their standard operating procedures with regard to discharging and readmitting clients. Some agencies routinely discharge clients after specified periods of inactivity. Other programs rarely discharge long-term clients with severe and persistent disorders.

TYPES OF SERVICE

10. Clinical Interventions

Individual, Family and Group Therapy

Individual, Family and Group Therapy refers to all psychotherapeutic and substance abuse services. Individual Therapy is a method of treatment that uses the interaction between a therapist and the individual to facilitate emotional or psychological change, to alleviate distress, and change substance use. Family Therapy is a method of treatment that uses the interaction between a therapist and the individual together with family members to facilitate emotional or psychological change and to alleviate distress. Group Therapy is a method of treatment that uses the interaction between a therapist and the individual together with peers to facilitate emotional or psychological change and to alleviate distress.

Psychotherapeutic services described in this report refer to services received by clients. A group therapy session in which one clinician meets with five clients, for instance, is counted as five services. Individual therapy sessions involving couples or families may involve multiple services as well. Individual and family therapy sessions tend to last about one hour. Individual, family and group therapy services are reported for nonresidential programs only.

Medication and Medical Support and Consultation Services

Medication and Medical Support and Consultation Services include evaluating the need for, prescribing and monitoring medication, and providing medical observation, support and consultation for an individual's health care. These services include evaluation of the need for psychoactive medication, the prescription by a qualified clinician, therapist, psychiatrist or nurse practitioner of psychoactive drugs intended to mitigate or prevent symptoms of mental illness and the monitoring and assessment of patient reaction to prescribed drugs. Medication and Medical Support and Consultation Services are reported for nonresidential programs only.

Clinical Assessment

Clinical Assessment refers to psychiatric, psychological, psychosocial, substance abuse, and/or developmental assessment sessions and the preparation of individualized plans, including the administration and interpretation of psychometric tests and the preparation of reports. Clinical Assessment services are reported for outpatient programs only when they are recorded as a separate service.

11. Day Services

The Day Services reported in this book include community-based Day Services and Partial Hospitalization. Note that Children's Services do not provide day services.

Day Services are group recovery activities in a milieu that promotes wellness, empowerment, a sense of community, personal responsibility, self-esteem and hope. These activities are consumer-centered. This service provides socialization, daily skills development and crisis support, and promotes self-advocacy. The primary providers of Day Services are Community Rehabilitation and Treatment Programs and Substance Abuse Programs.

Partial Hospitalization is an intensive (4-16 hours/day), time-limited (maximum 21 days) service provided as an alternative to inpatient care to prevent or shorten psychiatric hospitalization and promote recovery. Partial Hospitalization services are provided to individuals who would otherwise meet inpatient criteria, and medical personnel (nurse, physician) are accessible to provide services during hours of operation. Treatment modalities include diagnosis and evaluation; service planning and coordination; community supports; individual, group and family therapy; medication services and psycho-educational skill development for managing symptoms.

12. Service Planning and Coordination

Service Planning and Coordination falls under the broad category of Case Management. Service Planning and Coordination assists individuals and their families in planning, developing, choosing, gaining access to, coordinating and monitoring the provision of needed services and supports for a specific individual. Services and supports that are

planned and coordinated may be formal (provided by the human services system) or informal (available through the strengths and resources of the family or community). Services and supports include discharge planning, advocacy, and monitoring the well-being of individuals (and their families) and supporting them to make their own decisions.

13. Community Supports

Community Supports fall under the broad category of Case Management. Community Supports include specific, individualized and goal-oriented supports, which assist individuals (and families) in developing the skills and social supports necessary to promote recovery. These supports may include assistance in daily living, supportive counseling, support to participate in community activities, collateral contacts, and building and sustaining healthy personal, family and community relationships. All of these activities may also be provided in a group setting. Community supports may further include family education, consultation and training services that provide family members, significant others, home providers and foster families with the knowledge, skills, and understanding necessary to promote positive change.

14. Employment Services

Employment Services assist transition-age youth and adults in setting and achieving career and work goals. These services have four components. Employment assessment involves evaluation of the individual's work skills, identification of the individual's preferences and interests, and the development of personal work goals. Employer and job development helps clients gain employment by developing and supporting employers. Activities for employer development include identification, creation or enhancement of job opportunities, education, consulting, and assisting co-workers and managers in supporting and interacting with individuals. Job training assists an individual to begin work, learn the job, and gain social inclusion at work. Ongoing support to maintain employment involves activities needed to sustain paid work by the individual. These supports and services may be given both on and off the job site, and may involve long-term and/or intermittent follow-up.

Table 1-14 reports provision of these services by program of service. A further breakdown by community provider for Community Rehabilitation and Treatment Programs, the primary provider of these services, is given in Table 2C-9.

15. Crisis Services

Crisis Services are time-limited, intensive supports provided for individuals and families who are currently experiencing, or may be expected to experience, a psychological, behavioral, or emotional crisis. Services may also be provided to the individual's or family's immediate support system. These services are available 24 hours a day, 7 days a week. Crisis Services consist of two component parts: (1) Emergency/Crisis Assessment, Support and Referral, and (2) Emergency Beds.

Emergency/Crisis Assessment, Support and Referral

Emergency/Crisis Assessment, Support and Referral is a nonresidential service which includes initial information gathering, triage, training and early intervention, supportive counseling, consultation, referral and crisis planning. In addition, supports include: outreach and stabilization, clinical diagnosis and evaluation, treatment and direct support, and integration/discharge planning back to the person's home or alternative setting. Assessment may also include screening for inpatient psychiatric admission.

Emergency/Crisis Beds

Emergency Beds offer emergency, short-term, 24-hour residential supports in a setting other than the person's home. Table 1-15b reports provision of these services by program of service. A further breakdown by community provider for Community Rehabilitation and Treatment Programs is given in Table 2C-10b.

16. Housing and Home Supports

Housing and Home Supports provide services, supports and supervision to individuals in and around their residences up to 24 hours a day.

Residential services (by the day) are provided in a variety of settings. Staffed Living services are residential living arrangements for one or two people, staffed full-time by providers. Group Treatment/Living services are group living arrangements for three or more people. Licensed Home Providers/Foster Families are individualized shared-living arrangements for children, offered within Home Providers/Foster Families homes that are licensed. Unlicensed Home Providers/Foster Families are individualized shared-living arrangements for children and adults, offered within Home Providers/Foster Families homes. Both licensed and unlicensed home providers/foster families are contracted workers and are not considered staff in their role as contracted provider. All of the above services consist of residential days. Residential services in these settings frequently include planning and coordination together with other therapeutic, educational and supportive services as part of the overall residential service package.

Supervised/Assisted Living services (by the hour) are regularly scheduled or intermittent supports provided to an individual who lives in his or her home or that of a family member. These services are not provided by Children's Services Programs.

Residential facilities in the community for community mental health clients but not funded by the Department of Mental Health are not included in this report. These facilities include community care homes, nursing homes, boarding houses, and a number of other residential settings. Residential substance abuse treatment provided by designated agencies is also excluded from this report.

Institutional services are days in residence at VPCH. The day on which patients were admitted to this institution is included, while the day patients were discharged is excluded for purposes of determining length of stay. Residential services provided at the Brattleboro Retreat are not included in this report.

17. Respite Services

Respite services assist family members to help support specific individuals with disabilities. Respite services (by the hour or by the day/overnight) are provided on a short-term basis because of the absence, or need for relief, of those persons normally providing care to individuals who cannot be left unsupervised. Respite services are provided by Children's Services. Respite service data may be incomplete as arrangements and reporting vary from agency to agency.

18. Condition on Termination

Clinical staff are asked to rate as "improved," "unchanged," or "worse" the condition of each client whose case is closed. These ratings represent the professional opinion of the clinicians. Condition on termination is not reported by VPCH.

Discharge rates reported for designated agency clients may underestimate the actual rates. This occurs because it was not possible to identify clients who were discharged during a quarter in which they received services and their condition on termination had not yet been rated.

Clients who died while they were on the rolls of the community program or institutions are counted as discharged clients and are included in the discharge rate.

VERMONT PSYCHIATRIC CARE HOSPITAL

19. Admissions and Discharges

Admissions to and discharges from the Vermont Psychiatric Care Hospital (VPCH) include both first admissions and readmissions. Individuals with more than one admission or discharge during the year have been counted more than once in these totals.

For purposes of calculating total patient days and overall daily census, the day of admission and each day each patient remains in the hospital is counted as a full day in residence, while the day each patient is discharged is not counted as a day in residence.

20. Legal Status

Patients are admitted to the Vermont Psychiatric Care Hospital (VPCH) in one of several legal statuses. These have been grouped into four categories for purposes of this report: voluntary, emergency, forensic, and other. Emergency, forensic, and other admissions are all involuntary admissions to VPCH.

Voluntary admissions include conditional voluntary admissions and regular voluntary admissions. In order to qualify as a conditional voluntary admission, the patient must have enough insight and capacity to make a responsible application and that they consent to admission voluntarily, without any coercion or duress. Voluntary admission status may be terminated by the patient or facility director at any time. VPCH is an involuntary treatment facility; however, the category for voluntary admission is preserved for any exceptions.

Emergency admissions include admissions for emergency examination and admissions under a warrant for emergency examination. Admissions for emergency examination occur upon written application by an interested party accompanied by a certificate signed by a licensed physician who is not the applicant. The application sets forth the facts and circumstances which constitute the need for an emergency examination and which show that the person is in need of treatment. After being examined by a psychiatrist and found to be in need of hospitalization, the application for involuntary treatment is filed with the Vermont Superior Court Family Division. A hearing date is then set. Patients are sometimes discharged or prior to the hearing date.

Admissions under a warrant for emergency examination occur in emergency circumstances in which a certification by a physician is not available without serious and unreasonable delay and when personal observation of the conduct of a person constitutes reasonable grounds to believe that the person is in need of treatment and that he or she presents an immediate risk of serious injury to self or others. A law enforcement officer or mental health professional may make an application, not accompanied by a physician's certificate, to any superior court judge for a warrant for an emergency examination. If the judge is satisfied that a physician's certificate is not available without serious and unreasonable delay and that probable cause exists to believe that the person is in need of an emergency examination, the judge may order the person to submit to an immediate examination. Upon admission, the person shall be assessed and certified as a person in need of treatment. If not certified, the person must be discharged immediately.

Forensic admissions include admissions of persons who have been ordered by the Vermont Superior Court Criminal Division to undergo an inpatient competency and/or sanity evaluation in connection with a criminal charge. Before a person who has been ordered to undergo such an evaluation can actually be admitted, a psychiatrist must assess the person and determine that he or she is a person in need of treatment. An outside forensic psychiatrist examines and evaluates the person to determine if he or she is competent to stand trial for the alleged offense or was insane at the time of the alleged offense was committed. These orders vary in length, and often range from 15 to 60 days. Once the evaluation has been completed and a report is received by the court, a hearing date is set to consider the issue of competency and/or sanity. If the person is found not competent and/or insane, the court will schedule a separate hearing to consider whether inpatient treatment is necessary. If the court concludes that the person is in need of inpatient treatment, a 90-day hospitalization order shall be issued.

Depending on the circumstances, some patients hospitalized through the criminal court have to be returned to court before being released to the community. Written notice of discharge may also be required. Initial court orders of hospitalization, whether through the family or criminal court, are for 90-days. If the patient is not clinically ready for discharge prior to the expiration of that period, the Commissioner may file an application for continued treatment (ACT) seeking continued hospitalization for up to one year.

A less common type of admission occurs when a person's order of non-hospitalization (ONH) is revoked by the Vermont Superior Court Family Division. A revocation of an order of non-hospitalization occurs when a judge revokes an order because the person failed to comply with the conditions of the order. Once an ONH has been revoked, the person may be hospitalized for a period up to the expiration date of the ONH.

Another type of admission may occur when a patient who has already been involuntarily hospitalized and is receiving treatment in another facility (in or out-of-state) is transferred to the hospital pursuant to the interstate or intrastate compacts.

21. Type of Admission

Patients reported as first admissions to the Vermont Psychiatric Care Hospital (VPCH) have had no previous admissions to that institution. Patients reported as readmissions have previously been admitted to the hospital, although those admissions may not have occurred during the report period. The reader should keep in mind that the length of stay of first admissions includes all of the time these patients have spent at VPCH while the length of stay of readmissions includes only the current admission, which may be only a fraction of their total time in the hospital.

22. Discharge Rate

The discharge rate for clients admitted to the Vermont Psychiatric Care Hospital (VPCH) during FY2018 (Tables 3-14 through 3-19) is based on the number of days between each patient's admission to the hospital and his or her discharge. Patients discharged six or fewer days after their admission are reported as discharged within 1 week, patients discharged 13 or fewer days after their admission are counted as discharged within 2 weeks, etc. It should be kept in mind that these discharge rates are cumulative, not mutually exclusive. Patients counted as being discharged within one week of their admission are also counted as being discharged within two weeks of their admission, etc.

23. Length of Stay

Two measures of the length of stay of patients in residence at the Vermont Psychiatric Care Hospital (VPCH) at the end of the fiscal year are presented in Tables 3-20 through 3-25. The arithmetic mean is derived by adding the length of time between each patient's most recent admission and the last day of the fiscal year (June 30, 2018) and dividing the grand total by the number of patients in residence at the end of the year. The median length of stay is the time between the most recent admission and the end of the year for the patient who had been at the hospital as long as half of the patients in residence. The median is the fiftieth percentile.

At any given time, many patients will have been in the hospital relatively short periods of time while a few patients will have been in the hospital for very long periods of time. Because of this, the distribution of lengths of stay is skewed to the right. In this situation the mean is always greater than the median. The arithmetic mean presents a more accurate picture of the total utilization of VPCH by all patients in the various categories reported, while the median presents a more accurate picture of the length of stay of individuals in the categories.

