

Vermont Mental Health Performance Indicator Project

Vermont Agency of Human Services, Department of Mental Health
280 State Drive NOB 2 North, Waterbury, Vermont 05671

TO: Vermont Mental Health Performance Indicator Project
Advisory Group and Interested Parties

FROM: Sheila Leno

DATE: June 23, 2017

RE: Employment and Earnings of CRT Clients: 2nd Quarter of FY2008-2017

This week's PIP provides quarterly regional employment rates and average earnings of adults with serious mental illness served by Vermont's Community Rehabilitation and Treatment (CRT) programs. Employment rates and average earnings are presented for the second quarter (October-December) for each of ten fiscal years, FY2008 through FY2017.

This report, like previous reports in this series, is based on analysis of data obtained from Vermont Department of Mental Health (DMH) designated agencies and data obtained from the Vermont Department of Labor (DOL). These reports include all employment reported to DOL by Vermont employers.

As you will see, statewide CRT second quarter employment rates had decreased consistently from 20.9% in FY2008, to 14.8% in FY2012. Employment rates have increased to 18.0% in FY2017. (Page 2)

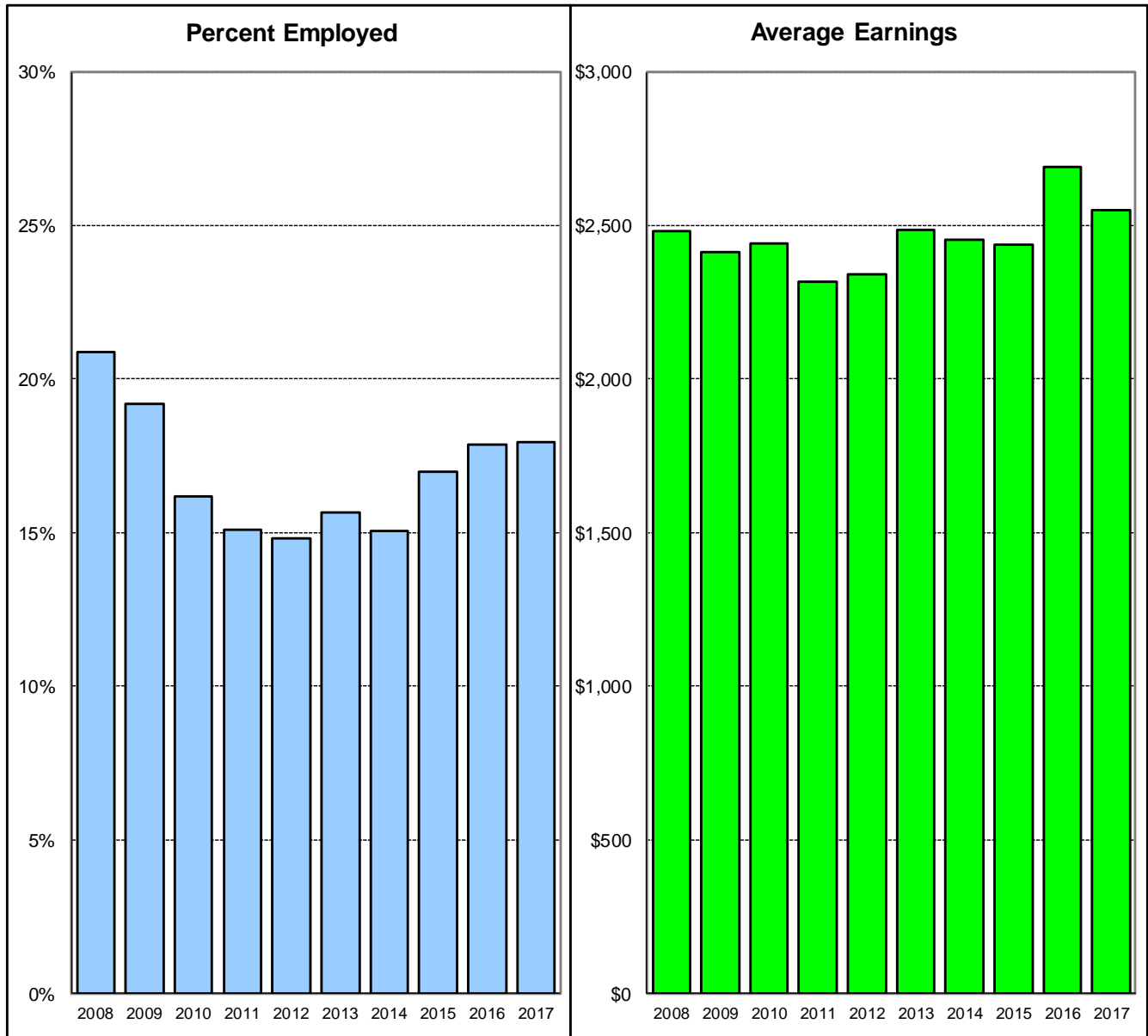
During the second quarter of FY2017, Washington had the highest employment rate, with 28.0% of CRT clients employed. The lowest second quarter CRT employment rates were in the Bennington region (12.0%) and Southeast region (12.2%). Compared to the previous year, employment rates for the second quarter of FY2017 increased in seven of eleven regions. The largest increase was in Bennington (7.4% to 12.0%). Compared to the previous year, employment rates for the second quarter of FY2017 decreased Addison from 24.8% to 20.4%, and in Chittenden from 22.7% to 18.5%. (Page 4)

Average second quarter earnings of employed CRT clients decreased from \$2,691 in FY2016 to \$2,552 in FY2017. (Page 2)

Average earnings of employed CRT clients during the second quarter of FY2017, were highest in Chittenden, with earnings of \$3,154 per employed CRT client, followed by Northwest (\$2,938) and Rutland (\$2,877). The lowest earnings per employed client were in Pathways (\$1,087) and Bennington (\$1,660). (Page 6)

We look forward to your comments and your suggestions for further analyses of these data. As always, you can reach us by e-mail at ahs.dmhpip@vermont.gov.

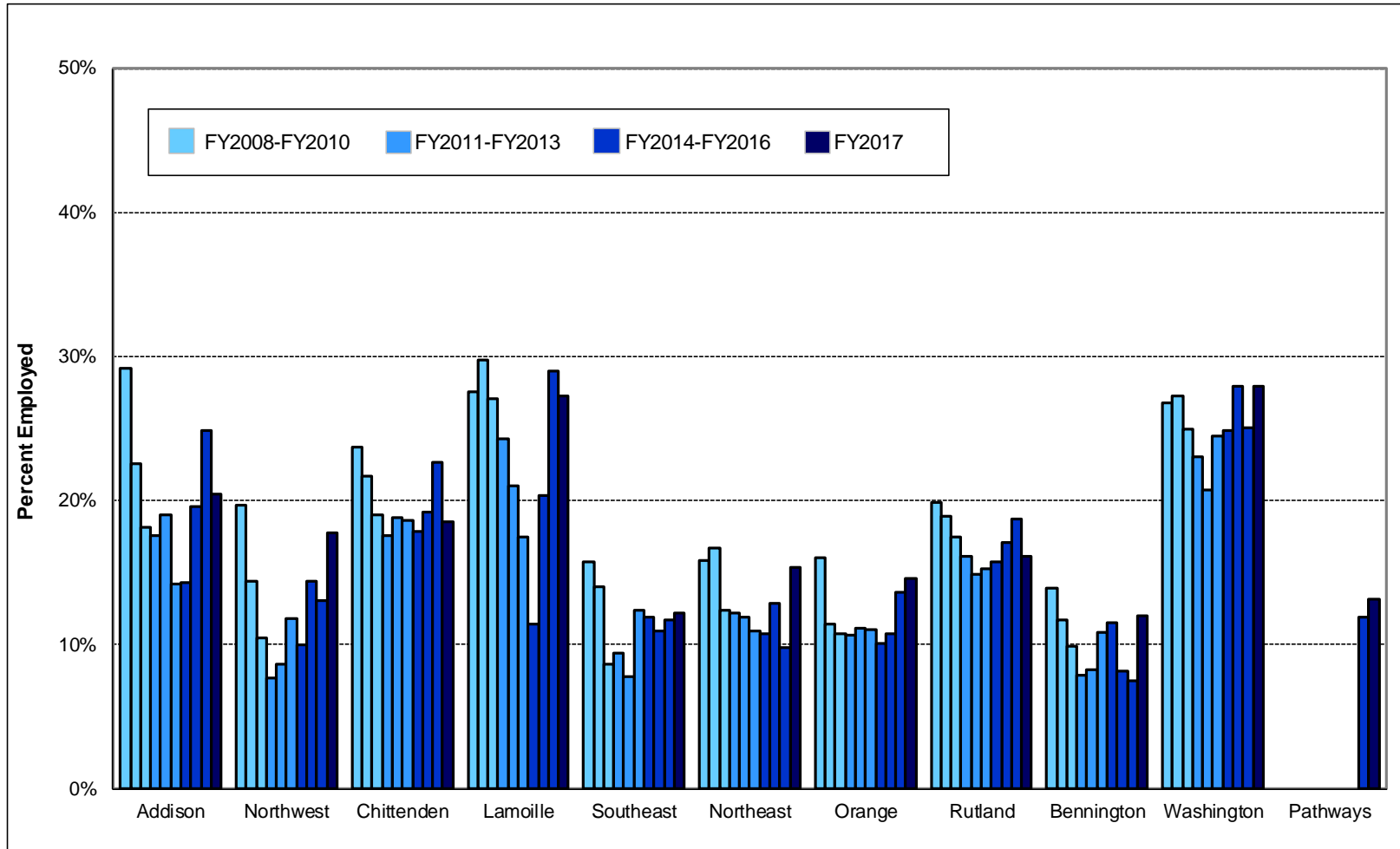
Statewide CRT Employment Rates and Average Earnings Second Quarter of Each Fiscal Year 2008 - 2017



	Second Quarter of Fiscal Year									
	<u>2008</u>	<u>2009</u>	<u>2010</u>	<u>2011</u>	<u>2012</u>	<u>2013</u>	<u>2014</u>	<u>2015</u>	<u>2016</u>	<u>2017</u>
% Employed	20.9%	19.2%	16.2%	15.1%	14.8%	15.7%	15.1%	17.0%	17.9%	18.0%
\$ / Employed Client	\$2,482	\$2,411	\$2,443	\$2,318	\$2,340	\$2,486	\$2,456	\$2,437	\$2,691	\$2,552

This report is based on record linkage of the DMH CRT and DOL databases. DMH client data are submitted by Community Programs in conformance with contractual requirements. DOL data are submitted by employers in conformance with state and federal laws. Workers who are excluded from DOL reporting are the self-employed, firm owners not incorporated and the following employee groups: elected officials, employees of nonprofit religious, charitable and educational organizations, unpaid family members, farm workers (with some exceptions), railroad employees, and individuals who work out of state. Analysis includes all employment reported for each quarter for active Community Rehabilitation and Treatment clients aged 18 - 64. Quarterly employment rates are lower than annual employment rates because not all clients who are employed during a year are employed during every quarter of the year.

Percent of CRT Clients Employed Second Quarter of Each Fiscal Year 2008 - 2017



This report is based on record linkage of the DMH CRT and DOL databases. DMH client data are submitted by Community Programs in conformance with contractual requirements. DOL data are submitted by employers in conformance with state and federal laws. Workers who are excluded from DOL reporting are the self-employed, firm owners not incorporated and the following employee groups: elected officials, employees of nonprofit religious, charitable and educational organizations, unpaid family members, farm workers (with some exceptions), railroad employees, and individuals who work out of state. Analysis includes all employment reported for each quarter for active Community Rehabilitation and Treatment clients aged 18 - 64. Quarterly employment rates are lower than annual employment rates because not all clients who are employed during a year are employed during every quarter of the year.

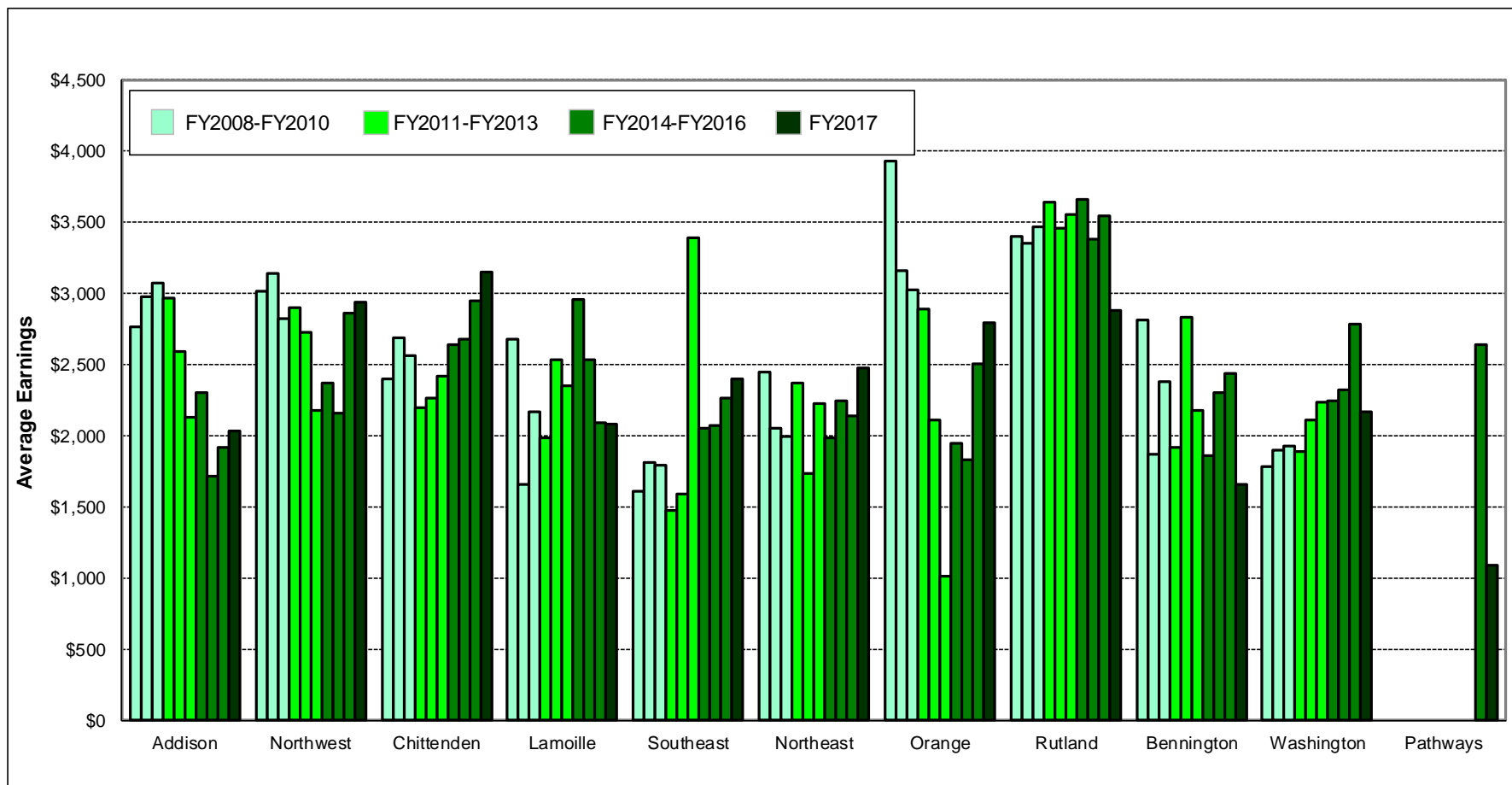
CRT Clients Served (#) and Percent Employed (%)

Second Quarter of Each Fiscal Year 2008 - 2017

Year	Region																				Statewide			
	Addison		Northwest		Chittenden		Lamoille		Southeast		Northeast		Orange		Rutland		Bennington		Washington		Pathways		#	%
	#	%	#	%	#	%	#	%	#	%	#	%	#	%	#	%	#	%	#	%	#	%	#	%
FY17	137	20.4	175	17.7	486	18.5	99	27.3	320	12.2	208	15.4	137	14.6	205	16.1	108	12.0	254	28.0	38	13.2	2,167	18.0
FY16	133	24.8	184	13.0	520	22.7	100	29.0	325	11.7	205	9.8	125	13.6	219	18.7	121	7.4	263	25.1	42	11.9	2,237	17.9
FY15	138	19.6	187	14.4	542	19.2	108	20.4	302	10.9	194	12.9	121	10.7	211	17.1	122	8.2	272	27.9			2,197	17.0
FY14	147	14.3	190	10.0	561	17.8	96	11.5	344	11.9	204	10.8	129	10.1	203	15.8	130	11.5	286	24.8			2,290	15.1
FY13	148	14.2	195	11.8	554	18.6	109	17.4	347	12.4	210	11.0	136	11.0	223	15.2	129	10.9	298	24.5			2,349	15.7
FY12	153	19.0	196	8.7	563	18.8	119	21.0	336	7.7	235	11.9	135	11.1	235	14.9	133	8.3	328	20.7			2,433	14.8
FY11	165	17.6	196	7.7	574	17.6	111	24.3	339	9.4	271	12.2	131	10.7	230	16.1	139	7.9	334	23.1			2,490	15.1
FY10	165	18.2	201	10.4	584	19.0	111	27.0	337	8.6	298	12.4	139	10.8	229	17.5	152	9.9	349	24.9			2,565	16.2
FY09	164	22.6	195	14.4	576	21.7	111	29.7	342	14.0	311	16.7	149	11.4	233	18.9	162	11.7	341	27.3			2,584	19.2
FY08	161	29.2	203	19.7	557	23.7	120	27.5	350	15.7	328	15.9	162	16.0	237	19.8	172	14.0	374	26.7			2,664	20.9

This report is based on record linkage of the DMH CRT and DOL databases. DMH client data are submitted by Community Programs in conformance with contractual requirements. DOL data are submitted by employers in conformance with state and federal laws. Workers who are excluded from DOL reporting are the self-employed, firm owners not incorporated and the following employee groups: elected officials, employees of nonprofit religious, charitable and educational organizations, unpaid family members, farm workers (with some exceptions), railroad employees, and individuals who work out of state. Analysis includes all employment reported for each quarter for active Community Rehabilitation and Treatment clients aged 18 - 64. Quarterly employment rates are lower than annual employment rates because not all clients who are employed during a year are employed during every quarter of the year.

Average Earnings for Employed CRT Clients Second Quarter of Each Fiscal Year 2008 - 2017



This report is based on record linkage of the DMH CRT and DOL databases. DMH client data are submitted by Community Programs in conformance with contractual requirements. DOL data are submitted by employers in conformance with state and federal laws. Workers who are excluded from DOL reporting are the self-employed, firm owners not incorporated and the following employee groups: elected officials, employees of nonprofit religious, charitable and educational organizations, unpaid family members, farm workers (with some exceptions), railroad employees, and individuals who work out of state. Analysis includes all employment reported for each quarter for active Community Rehabilitation and Treatment clients aged 18 - 64. Quarterly employment rates are lower than annual employment rates because not all clients who are employed during a year are employed during every quarter of the year.

CRT Clients Employed (#) and Average Earnings for Employed Clients (\$)
Second Quarter of Each Fiscal Year 2008 - 2017

Year	Region																Statewide							
	Addison		Northwest		Chittenden		Lamoille		Southeast		Northeast		Orange		Rutland		Bennington		Washington		Pathways		#	\$
	#	\$	#	\$	#	\$	#	\$	#	\$	#	\$	#	\$	#	\$	#	\$	#	\$				
FY17	28	\$2,035	31	\$2,938	90	\$3,154	27	\$2,080	39	\$2,395	32	\$2,471	20	\$2,791	33	\$2,877	13	\$1,660	71	\$2,172	5	\$1,087	389	\$2,552
FY16	33	\$1,920	24	\$2,865	118	\$2,951	29	\$2,087	38	\$2,260	20	\$2,140	17	\$2,502	41	\$3,546	9	\$2,438	66	\$2,783	5	\$2,639	400	\$2,691
FY15	27	\$1,718	27	\$2,156	104	\$2,682	22	\$2,537	33	\$2,068	25	\$2,245	13	\$1,835	36	\$3,385	10	\$2,304	76	\$2,323			373	\$2,437
FY14	21	\$2,301	19	\$2,368	100	\$2,640	11	\$2,956	41	\$2,048	22	\$1,987	13	\$1,948	32	\$3,661	15	\$1,859	71	\$2,244			345	\$2,456
FY13	21	\$2,130	23	\$2,178	103	\$2,416	19	\$2,348	43	\$3,386	23	\$2,230	15	\$1,012	34	\$3,552	14	\$2,173	73	\$2,236			368	\$2,486
FY12	29	\$2,589	17	\$2,730	106	\$2,269	25	\$2,538	26	\$1,587	28	\$1,731	15	\$2,114	35	\$3,458	11	\$2,831	68	\$2,106			360	\$2,340
FY11	29	\$2,968	15	\$2,899	101	\$2,195	27	\$1,982	32	\$1,475	33	\$2,370	14	\$2,894	37	\$3,638	11	\$1,914	77	\$1,885			376	\$2,318
FY10	30	\$3,073	21	\$2,827	111	\$2,561	30	\$2,164	29	\$1,796	37	\$1,990	15	\$3,023	40	\$3,465	15	\$2,375	87	\$1,930			415	\$2,443
FY09	37	\$2,974	28	\$3,144	125	\$2,691	33	\$1,656	48	\$1,809	52	\$2,055	17	\$3,158	44	\$3,356	19	\$1,871	93	\$1,897			496	\$2,411
FY08	47	\$2,768	40	\$3,016	132	\$2,401	33	\$2,680	55	\$1,609	52	\$2,445	26	\$3,929	47	\$3,402	24	\$2,812	100	\$1,785			556	\$2,482

This report is based on record linkage of the DMH CRT and DOL databases. DMH client data are submitted by Community Programs in conformance with contractual requirements. DOL data are submitted by employers in conformance with state and federal laws. Workers who are excluded from DOL reporting are the self-employed, firm owners not incorporated and the following employee groups: elected officials, employees of nonprofit religious, charitable and educational organizations, unpaid family members, farm workers (with some exceptions), railroad employees, and individuals who work out of state. Analysis includes all employment reported for each quarter for active Community Rehabilitation and Treatment clients aged 18 - 64. Quarterly employment rates are lower than annual employment rates because not all clients who are employed during a year are employed during every quarter of the year.

**Quarter 2 Fiscal Year 2017 Employment
of Community Rehabilitation and Treatment Clients
In Vermont**

Clinic	Total Number Served	Employment		Wages Reported	
		Number Employed	Percent Employed	Total Wages	Wages per Employed Client
Addison - CSAC	137	28	20.4%	\$56,993	\$2,035
Northwest - NCSS	175	31	17.7%	\$91,074	\$2,938
Chittenden - HC	486	90	18.5%	\$283,880	\$3,154
Lamoille - LCMH	99	27	27.3%	\$56,163	\$2,080
Southeast - HCRS	320	39	12.2%	\$93,423	\$2,395
Northeast - NKHS	208	32	15.4%	\$79,078	\$2,471
Orange - CMC	137	20	14.6%	\$55,811	\$2,791
Rutland - RMHS	205	33	16.1%	\$94,940	\$2,877
Bennington - UCS	108	13	12.0%	\$21,582	\$1,660
Washington - WCMH	254	71	28.0%	\$154,225	\$2,172
Pathways - PATH	38	5	13.2%	\$5,437	\$1,087
Quarterly Total	2,167	389	18.0%	\$992,607	\$2,552

This report is based on record linkage of the Vermont DMH CRT and DOL databases. DMH client data are submitted by Community Programs in conformance with contractual requirements. DOL data are submitted by employers in conformance with state and federal laws. Workers who are excluded from DOL reporting are the self-employed, firm owners not incorporated and the following employee groups: elected officials, employees of nonprofit religious, charitable and educational organizations, unpaid family members, farm workers (with some exceptions), railroad employees, and individuals who work out of state. Analysis includes all employment reported for each quarter for active Community Rehabilitation and Treatment clients aged 18 - 64. Quarterly employment rates are lower than annual employment rates because not all clients who are employed during a year are employed during every quarter of the year.