

Vermont Mental Health Performance Indicator Project

Vermont Agency of Human Services, Department of Mental Health
280 State Drive NOB 2 North, Waterbury, Vermont 05671

TO: Vermont Mental Health Performance Indicator Project
Advisory Group and Interested Parties

FROM: Sheila Leno

DATE: June 16, 2017

RE: Employment of CRT Clients: First Quarter of Fiscal Years 2008-2017

This week's PIP provides the employment rates of adults with severe and persistent mental illness served by Vermont's Community Rehabilitation and Treatment (CRT) programs for the first quarter of FY2017 (July through September 2016) and for the first quarter of the previous nine fiscal years. Previous reports regarding employment rates are available online at: <http://mentalhealth.vermont.gov/report/pip/sector#employment>.

Consistent with previous employment reports, this report is based on analysis of data obtained from the Vermont Department of Mental Health (DMH) Designated Agencies and one provisional Specialized Services Agency (SSA), and this data is then linked to data obtained from the Vermont Department of Labor (DOL). The Pathways to Housing organization was added as a provisional SSA during FY2015. More methodological details are provided in the attached tables.

As you will see, CRT first-quarter client employment rates were in the 20% to 21% range during FY2008 - FY2009, before decreasing to 16.3% in FY2010, and to around 15% during FY2011 - FY2013. Since FY2014, the employment rate has increased slightly to around 17%, (Page 2).

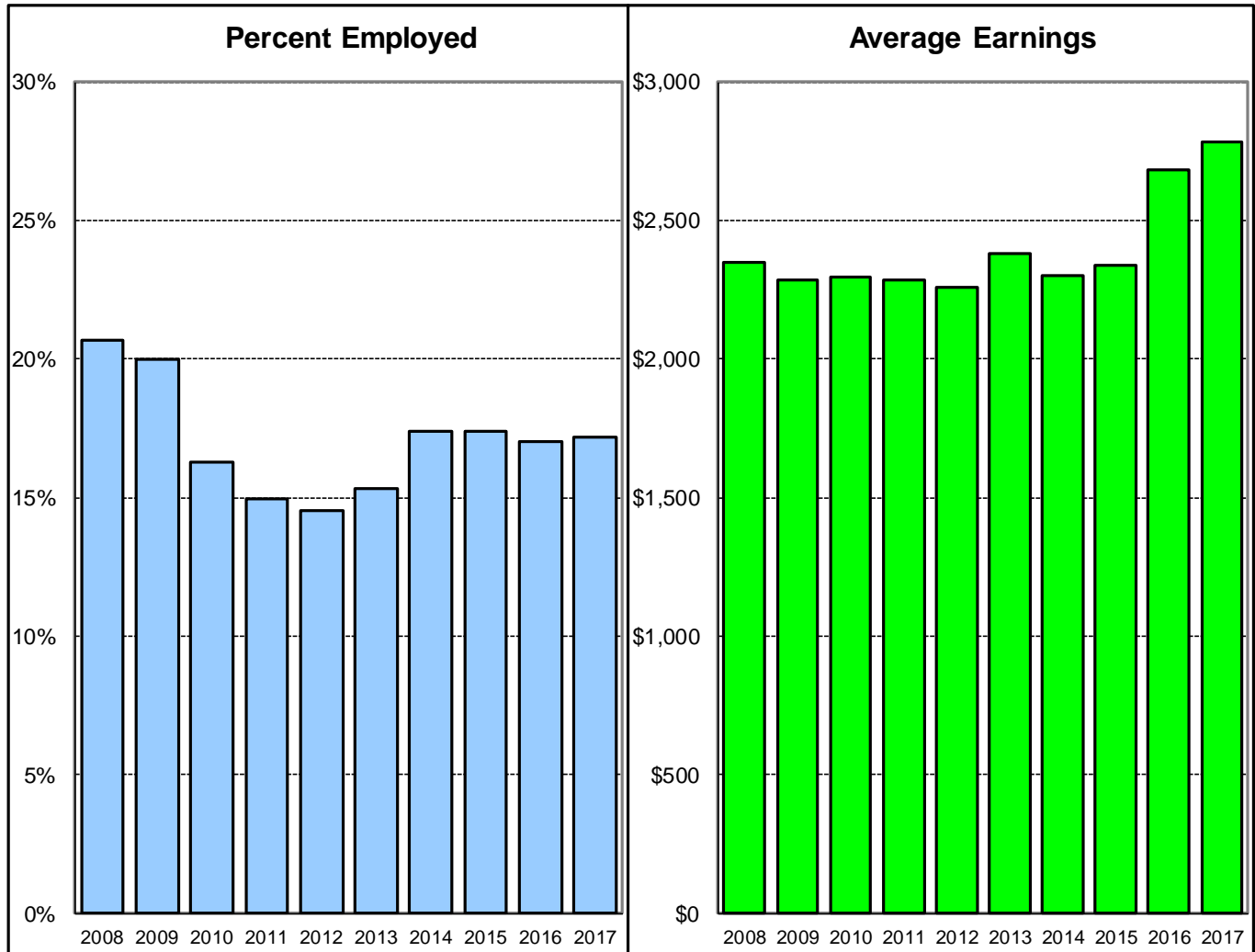
First quarter employment rates for CRT clients increased in four of Vermont's ten community mental health regions and one provisional SSA between fiscal years 2016 and 2017. This increase was greatest at United Counseling Services (UCS) which experienced a 54% increase in CRT employment (from 8.3% to 12.7%), followed by Northwestern Counseling and Support Services (NCSS) which experienced a 37% increase (from 13.9% to 19.0%). First quarter employment rates for CRT clients at Pathways to Housing (PATH) decreased 9% between FY2016 and FY2017, from 11.9% to 10.8%, (Page 4).

During the ten years under examination, statewide average first-quarter earnings of employed CRT clients hovered around \$2,300 between FY2008 and FY2015. The average earnings increased to \$2,684 in FY2016 and \$2,782 in FY2017, (Page 2).

As always, we look forward to your comments and suggestions for further analyses of these data by e-mail at ahs.dmhpip@vermont.gov.

Statewide CRT Employment Rates and Average Earnings

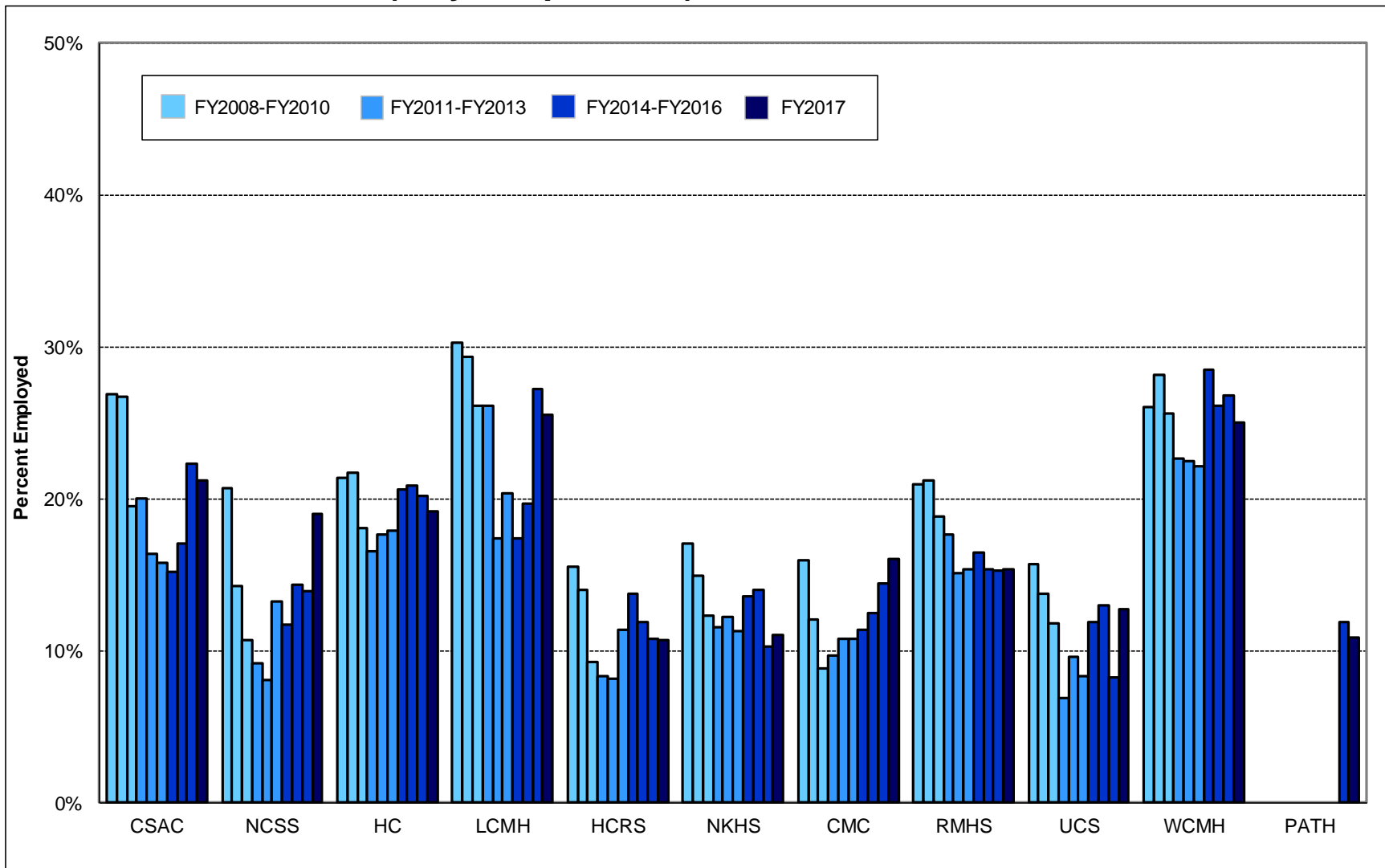
First Quarter of Each Fiscal Year 2008 - 2017



	First Quarter (July - September) of Fiscal Year									
	<u>2008</u>	<u>2009</u>	<u>2010</u>	<u>2011</u>	<u>2012</u>	<u>2013</u>	<u>2014</u>	<u>2015</u>	<u>2016</u>	<u>2017</u>
% Employed	20.7	20.0	16.3	14.9	14.5	15.3	17.4	17.4	17.0	17.2
\$ / Employed Client	2,346	2,282	2,295	2,283	2,256	2,379	2,303	2,339	2,684	2,782

This report is based on record linkage of the Vermont Department of Mental Health (DMH) and Department of Labor (DOL) databases. DMH client data are submitted by Community Programs in conformance with contractual requirements. DOL data are submitted by employers in conformance with state and federal laws. Workers who are excluded from DOL reporting are the self-employed, firm owners not incorporated and the following employee groups: elected officials, employees of nonprofit religious, charitable and educational organizations, unpaid family members, farm workers (with some exceptions), railroad employees, and individuals employed in neighboring states. Analysis includes Community Rehabilitation and Treatment (CRT) clients aged 18 - 64 who were active during each reporting quarter and includes all employment reported for each quarter. Quarterly employment rates are lower than annual employment rates because not all clients who are employed during a year are employed during every quarter of the year.

CRT Clients Employed First Quarter (July - September) of Each Fiscal Year 2008 - 2017



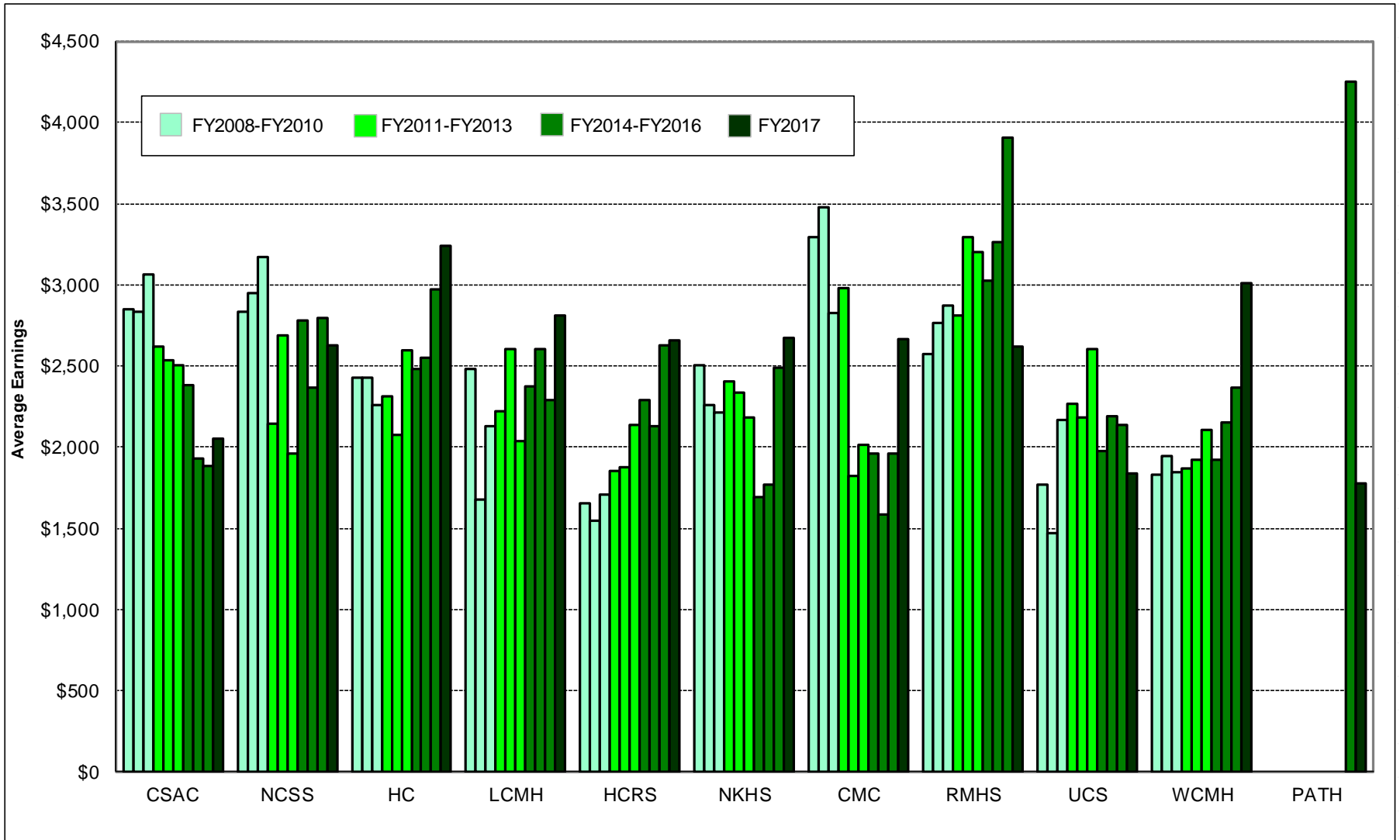
This report is based on record linkage of the Vermont Department of Mental Health (DMH) and Department of Labor (DOL) databases. DMH client data are submitted by Community Programs in conformance with contractual requirements. DOL data are submitted by employers in conformance with state and federal laws. Workers who are excluded from DOL reporting are the self-employed, firm owners not incorporated and the following employee groups: elected officials, employees of nonprofit religious, charitable and educational organizations, unpaid family members, farm workers (with some exceptions), railroad employees, and individuals employed in neighboring states. Analysis includes Community Rehabilitation and Treatment (CRT) clients aged 18 - 64 who were active during each reporting quarter and includes all employment reported for each quarter. Quarterly employment rates are lower than annual employment rates because not all clients who are employed during a year are employed during every quarter of the year.

Total CRT Clients Served (#) and Percent Employed (%)
First Quarter (July - September) of Each Fiscal Year 2008 - 2017

Year	Clinic																				Statewide			
	CSAC		NCSS		HC		LCMH		HCRS		NKHS		CMC		RMHS		UCS		WCMH				PATH	
	#	%	#	%	#	%	#	%	#	%	#	%	#	%	#	%	#	%	#	%	#	%	#	%
FY17	137	21.2	179	19.0	491	19.1	98	25.5	318	10.7	209	11.0	137	16.1	209	15.3	110	12.7	252	25.0	37	10.8	2,177	17.2
FY16	130	22.3	180	13.9	521	20.2	103	27.2	324	10.8	195	10.3	132	14.4	216	15.3	121	8.3	261	26.8	42	11.9	2,225	17.0
FY15	141	17.0	189	14.3	546	20.9	107	19.6	312	11.9	186	14.0	120	12.5	208	15.4	131	13.0	272	26.1			2,212	17.4
FY14	145	15.2	196	11.7	562	20.6	98	17.3	334	13.8	199	13.6	132	11.4	207	16.4	126	11.9	291	28.5			2,290	17.4
FY13	152	15.8	196	13.3	559	17.9	108	20.4	343	11.4	213	11.3	139	10.8	235	15.3	133	8.3	312	22.1			2,390	15.3
FY12	159	16.4	198	8.1	579	17.6	121	17.4	345	8.1	245	12.2	139	10.8	245	15.1	136	9.6	338	22.5			2,505	14.5
FY11	165	20.0	197	9.1	569	16.5	111	26.1	337	8.3	277	11.6	145	9.7	233	17.6	145	6.9	344	22.7			2,523	14.9
FY10	159	19.5	197	10.7	581	18.1	115	26.1	335	9.3	301	12.3	136	8.8	229	18.8	161	11.8	351	25.6			2,565	16.3
FY09	161	26.7	197	14.2	581	21.7	109	29.4	343	14.0	315	14.9	150	12.0	231	21.2	160	13.8	341	28.2			2,588	19.7
FY08	164	26.8	208	20.7	562	21.4	119	30.3	342	15.5	329	17.0	163	16.0	239	20.9	172	15.7	373	26.0			2,671	20.7

This report is based on record linkage of the Vermont Department of Mental Health (DMH) and Department of Labor (DOL) databases. DMH client data are submitted by Community Programs in conformance with contractual requirements. DOL data are submitted by employers in conformance with state and federal laws. Workers who are excluded from DOL reporting are the self-employed, firm owners not incorporated and the following employee groups: elected officials, employees of nonprofit religious, charitable and educational organizations, unpaid family members, farm workers (with some exceptions), railroad employees, and individuals employed in neighboring states. Analysis includes Community Rehabilitation and Treatment (CRT) clients aged 18 - 64 who were active during each reporting quarter and includes all employment reported for each quarter. Quarterly employment rates are lower than annual employment rates because not all clients who are employed during a year are employed during every quarter of the year.

Average Earnings for Employed CRT Clients First Quarter (July - September) of Each Fiscal Year 2008 - 2017



This report is based on record linkage of the Vermont Department of Mental Health (DMH) and Department of Labor (DOL) databases. DMH client data are submitted by Community Programs in conformance with contractual requirements. DOL data are submitted by employers in conformance with state and federal laws. Workers who are excluded from DOL reporting are the self-employed, firm owners not incorporated and the following employee groups: elected officials, employees of nonprofit religious, charitable and educational organizations, unpaid family members, farm workers (with some exceptions), railroad employees, and individuals employed in neighboring states. Analysis includes Community Rehabilitation and Treatment (CRT) clients aged 18 - 64 who were active during each reporting quarter and includes all employment reported for each quarter. Quarterly employment rates are lower than annual employment rates because not all clients who are employed during a year are employed during every quarter of the year.

CRT Clients Employed (#) and Average Earnings for Employed Clients (\$) First Quarter (July - September) of Each Fiscal Year 2008 - 2017

Year	Clinic																	Statewide \$					
	CSAC		NCSS		HC		LCMH		HCRS		NKHS		CMC		RMHS		UCS		WCMH		PATH		
	#	\$	#	\$	#	\$	#	\$	#	\$	#	\$	#	\$	#	\$	#		\$	#	\$	#	\$
FY17	29	2,054	34	2,630	94	3,240	25	2,810	34	2,654	23	2,669	22	2,668	32	2,617	14	1,834	63	3,012	4	1,780	2,782
FY16	29	1,881	25	2,797	105	2,973	28	2,293	35	2,624	20	2,489	19	1,963	33	3,907	10	2,137	70	2,368	5	4,253	2,684
FY15	24	1,933	27	2,364	114	2,551	21	2,601	37	2,127	26	1,770	15	1,581	32	3,264	17	2,190	71	2,148			2,339
FY14	22	2,378	23	2,779	116	2,478	17	2,373	46	2,287	27	1,692	15	1,963	34	3,027	15	1,977	83	1,924			2,303
FY13	24	2,504	26	1,958	100	2,599	22	2,040	39	2,135	24	2,182	15	2,010	36	3,200	11	2,604	69	2,104			2,379
FY12	26	2,537	16	2,687	102	2,071	21	2,600	28	1,874	30	2,337	15	1,819	37	3,297	13	2,182	76	1,923			2,256
FY11	33	2,616	18	2,146	94	2,309	29	2,223	28	1,853	32	2,401	14	2,983	41	2,811	10	2,264	78	1,870			2,283
FY10	31	3,064	21	3,173	105	2,255	30	2,132	31	1,708	37	2,213	12	2,823	43	2,873	19	2,170	90	1,842			2,295
FY09	43	2,832	28	2,946	126	2,430	32	1,676	48	1,549	47	2,261	18	3,480	49	2,763	22	1,467	96	1,944			2,282
FY08	44	2,846	43	2,836	120	2,426	36	2,483	53	1,652	56	2,501	26	3,295	50	2,574	27	1,765	97	1,830			2,346

This report is based on record linkage of the Vermont Department of Mental Health (DMH) and Department of Labor (DOL) databases. DMH client data are submitted by Community Programs in conformance with contractual requirements. DOL data are submitted by employers in conformance with state and federal laws. Workers who are excluded from DOL reporting are the self-employed, firm owners not incorporated and the following employee groups: elected officials, employees of nonprofit religious, charitable and educational organizations, unpaid family members, farm workers (with some exceptions), railroad employees, and individuals employed in neighboring states. Analysis includes Community Rehabilitation and Treatment (CRT) clients aged 18 - 64 who were active during each reporting quarter and includes all employment reported for each quarter. Quarterly employment rates are lower than annual employment rates because not all clients who are employed during a year are employed during every quarter of the year.

FY2017 First Quarter (July - September) Employment of Community Rehabilitation and Treatment Clients In Vermont

Clinic	Total Number Served	Employment		Wages Reported	
		Number Employed	Percent Employed	Total Wages	Wages per Employed Client
CSAC	137	29	21.2%	\$59,573	\$2,054
NCSS	179	34	19.0%	\$89,431	\$2,630
HC	491	94	19.1%	\$304,549	\$3,240
LCMH	98	25	25.5%	\$70,250	\$2,810
HCRS	318	34	10.7%	\$90,249	\$2,654
NKHS	209	23	11.0%	\$61,394	\$2,669
CMC	137	22	16.1%	\$58,688	\$2,668
RMHS	209	32	15.3%	\$83,742	\$2,617
UCS	110	14	12.7%	\$25,670	\$1,834
WCMH	252	63	25.0%	\$189,772	\$3,012
PATH	37	4	10.8%	\$7,119	\$1,780
Quarterly Total	2,177	374	17.2%	\$1,040,436	\$2,782

This report is based on record linkage of the Vermont Department of Mental Health (DMH) and Department of Labor (DOL) databases. DMH client data are submitted by Community Programs in conformance with contractual requirements. DOL data are submitted by employers in conformance with state and federal laws. Workers who are excluded from DOL reporting are the self-employed, firm owners not incorporated and the following employee groups: elected officials, employees of nonprofit religious, charitable and educational organizations, unpaid family members, farm workers (with some exceptions), railroad employees, and individuals employed in neighboring states. Analysis includes Community Rehabilitation and Treatment (CRT) clients aged 18 - 64 who were active during each reporting quarter and includes all employment reported for each quarter. Quarterly employment rates are lower than annual employment rates because not all clients who are employed during a year are employed during every quarter of the year.