

## Vermont Mental Health Performance Indicator Project

Vermont Agency of Human Services, Department of Mental Health  
280 State Drive NOB 2 North, Waterbury, Vermont 05671

TO: Vermont Mental Health Performance Indicator Project  
Advisory Group and Interested Parties

FROM: Sheila Leno

DATE: March 12, 2018

RE: Employment of CRT Clients: First Quarter of Fiscal Years 2009-2018

This week's PIP provides the employment rates of adults with severe and persistent mental illness served by Vermont's Community Rehabilitation and Treatment (CRT) programs for the first quarter of FY2018 (July through September 2017) and for the first quarter of the previous nine fiscal years. Previous reports regarding employment rates are available online at: <http://mentalhealth.vermont.gov/reports/statistical-reports-and-data>.

Consistent with previous employment reports, this report is based on analysis of data obtained from the Vermont Department of Mental Health (DMH) Designated Agencies and one provisional Specialized Services Agency (SSA), and this data is then linked to data obtained from the Vermont Department of Labor (DOL). The Pathways to Housing organization was added as a provisional SSA during FY2015. More methodological details are provided in the attached tables.

As you will see, CRT first-quarter client employment rate was 20% during FY2009. The employment rate decreased to 14.5% in FY2012. Since FY2014, the employment rate has increased slightly to around 17%, (Page 2).

First quarter employment rates for CRT clients increased in two of Vermont's ten community mental health regions and one provisional SSA between fiscal years 2017 and 2018. This increase was greatest at Counseling Service of Addison County (CSAC) which experienced a 10% increase in CRT employment (from 21.2% to 23.3%). United Counseling Services (UCS) experienced a 5% increase (from 12.7% to 13.3%). First quarter employment rates for CRT clients at Pathways to Housing (PATH) decreased 37% between FY2017 and FY2018, from 10.8% to 6.8%, (Page 4).

During the ten years under examination, statewide average first-quarter earnings of employed CRT clients hovered around \$2,300 between FY2009 and FY2015. The average earnings increased to \$2,684 in FY2016, \$2,782 in FY2017, and \$2,817 in FY2018 (Page 2).

As always, we look forward to your comments and suggestions for further analyses of these data by e-mail at [ahs.dmhpip@vermont.gov](mailto:ahs.dmhpip@vermont.gov).

# Statewide CRT Employment Rates and Average Earnings

## First Quarter of Each Fiscal Year 2009 - 2018

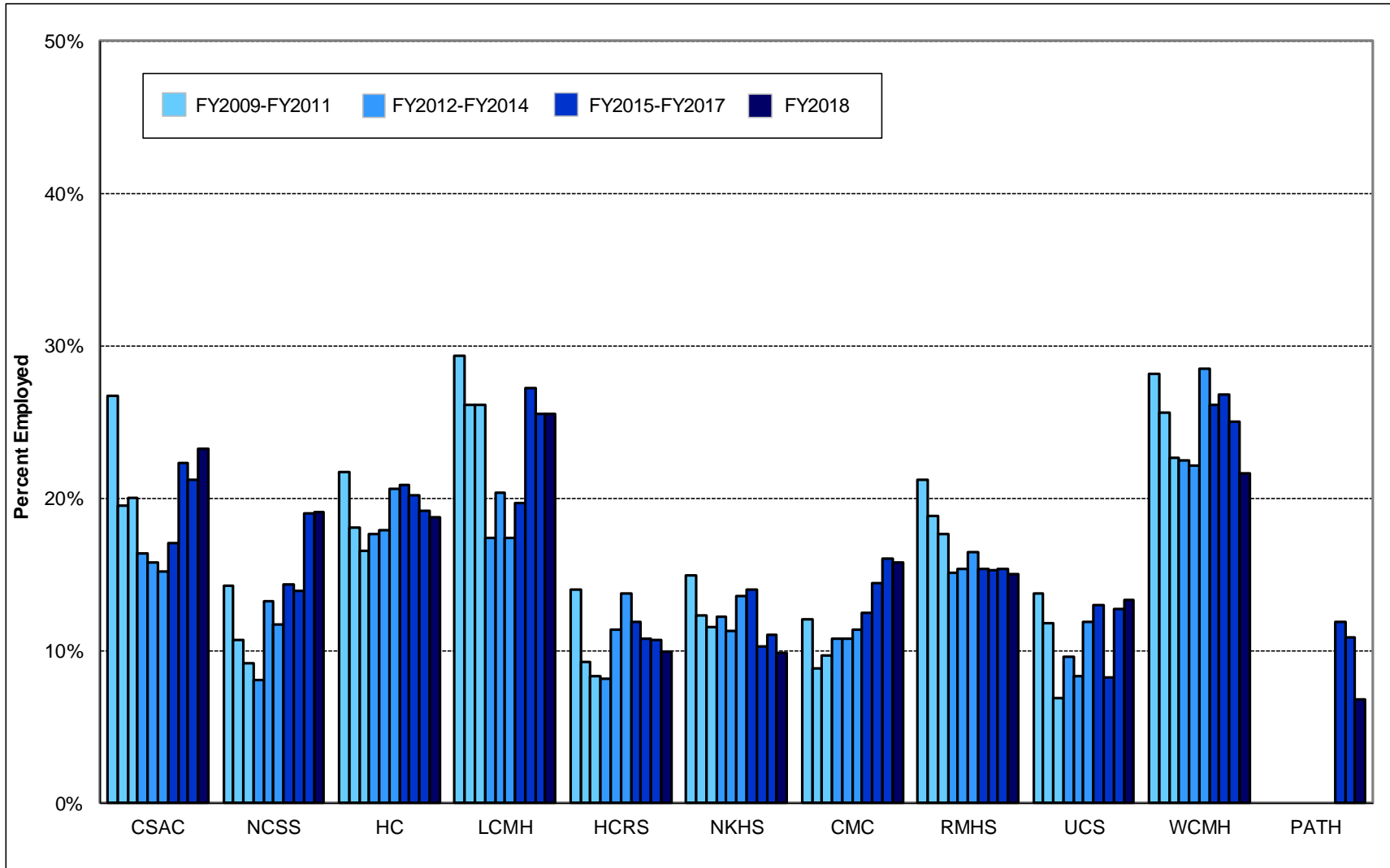


	First Quarter (July - September) of Fiscal Year									
	<u>2009</u>	<u>2010</u>	<u>2011</u>	<u>2012</u>	<u>2013</u>	<u>2014</u>	<u>2015</u>	<u>2016</u>	<u>2017</u>	<u>2018</u>
% Employed	20.0	16.3	14.9	14.5	15.3	17.4	17.4	17.0	17.2	16.6
\$ / Employed Client	2,282	2,295	2,283	2,256	2,379	2,303	2,339	2,684	2,782	2,817

This report is based on record linkage of the Vermont Department of Mental Health (DMH) and Department of Labor (DOL) databases. DMH client data are submitted by Community Programs in conformance with contractual requirements. DOL data are submitted by employers in conformance with state and federal laws. Workers who are excluded from DOL reporting are the self-employed, firm owners not incorporated and the following employee groups: elected officials, employees of nonprofit religious, charitable and educational organizations, unpaid family members, farm workers (with some exceptions), railroad employees, and individuals employed in neighboring states. Analysis includes Community Rehabilitation and Treatment (CRT) clients aged 18 - 64 who were active during each reporting quarter and includes all employment reported for each quarter. Quarterly employment rates are lower than annual employment rates because not all clients who are employed during a year are employed during every quarter of the year.

# CRT Clients Employed

## First Quarter (July - September) of Each Fiscal Year 2009 - 2018



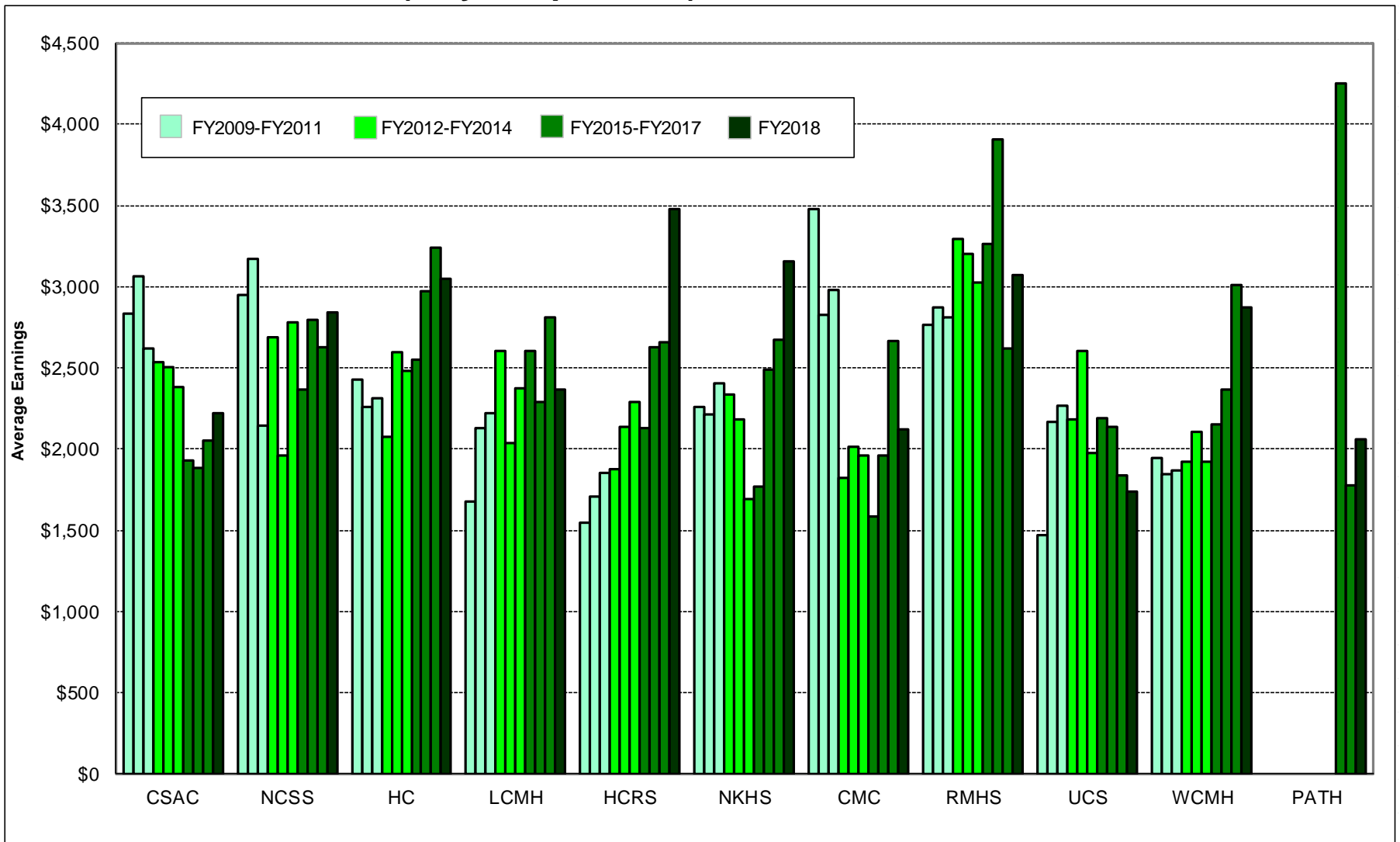
This report is based on record linkage of the Vermont Department of Mental Health (DMH) and Department of Labor (DOL) databases. DMH client data are submitted by Community Programs in conformance with contractual requirements. DOL data are submitted by employers in conformance with state and federal laws. Workers who are excluded from DOL reporting are the self-employed, firm owners not incorporated and the following employee groups: elected officials, employees of nonprofit religious, charitable and educational organizations, unpaid family members, farm workers (with some exceptions), railroad employees, and individuals employed in neighboring states. Analysis includes Community Rehabilitation and Treatment (CRT) clients aged 18 - 64 who were active during each reporting quarter and includes all employment reported for each quarter. Quarterly employment rates are lower than annual employment rates because not all clients who are employed during a year are employed during every quarter of the year.

**Total CRT Clients Served (#) and Percent Employed (%)**  
**First Quarter (July - September) of Each Fiscal Year 2009 - 2018**

Year	Clinic																				Statewide			
	CSAC		NCSS		HC		LCMH		HCRS		NKHS		CMC		RMHS		UCS		WCMH				PATH	
	#	%	#	%	#	%	#	%	#	%	#	%	#	%	#	%	#	%	#	%	#	%	#	%
FY18	129	23.3	168	19.0	506	18.8	102	25.5	313	9.9	193	9.8	127	15.7	200	15.0	105	13.3	254	21.7	44	6.8	2,141	16.6
FY17	137	21.2	179	19.0	491	19.1	98	25.5	318	10.7	209	11.0	137	16.1	209	15.3	110	12.7	252	25.0	37	10.8	2,177	17.2
FY16	130	22.3	180	13.9	521	20.2	103	27.2	324	10.8	195	10.3	132	14.4	216	15.3	121	8.3	261	26.8	42	11.9	2,225	17.0
FY15	141	17.0	189	14.3	546	20.9	107	19.6	312	11.9	186	14.0	120	12.5	208	15.4	131	13.0	272	26.1			2,212	17.4
FY14	145	15.2	196	11.7	562	20.6	98	17.3	334	13.8	199	13.6	132	11.4	207	16.4	126	11.9	291	28.5			2,290	17.4
FY13	152	15.8	196	13.3	559	17.9	108	20.4	343	11.4	213	11.3	139	10.8	235	15.3	133	8.3	312	22.1			2,390	15.3
FY12	159	16.4	198	8.1	579	17.6	121	17.4	345	8.1	245	12.2	139	10.8	245	15.1	136	9.6	338	22.5			2,505	14.5
FY11	165	20.0	197	9.1	569	16.5	111	26.1	337	8.3	277	11.6	145	9.7	233	17.6	145	6.9	344	22.7			2,523	14.9
FY10	159	19.5	197	10.7	581	18.1	115	26.1	335	9.3	301	12.3	136	8.8	229	18.8	161	11.8	351	25.6			2,565	16.3
FY09	161	26.7	197	14.2	581	21.7	109	29.4	343	14.0	315	14.9	150	12.0	231	21.2	160	13.8	341	28.2			2,588	19.7

This report is based on record linkage of the Vermont Department of Mental Health (DMH) and Department of Labor (DOL) databases. DMH client data are submitted by Community Programs in conformance with contractual requirements. DOL data are submitted by employers in conformance with state and federal laws. Workers who are excluded from DOL reporting are the self-employed, firm owners not incorporated and the following employee groups: elected officials, employees of nonprofit religious, charitable and educational organizations, unpaid family members, farm workers (with some exceptions), railroad employees, and individuals employed in neighboring states. Analysis includes Community Rehabilitation and Treatment (CRT) clients aged 18 - 64 who were active during each reporting quarter and includes all employment reported for each quarter. Quarterly employment rates are lower than annual employment rates because not all clients who are employed during a year are employed during every quarter of the year.

## Average Earnings for Employed CRT Clients First Quarter (July - September) of Each Fiscal Year 2009 - 2018



This report is based on record linkage of the Vermont Department of Mental Health (DMH) and Department of Labor (DOL) databases. DMH client data are submitted by Community Programs in conformance with contractual requirements. DOL data are submitted by employers in conformance with state and federal laws. Workers who are excluded from DOL reporting are the self-employed, firm owners not incorporated and the following employee groups: elected officials, employees of nonprofit religious, charitable and educational organizations, unpaid family members, farm workers (with some exceptions), railroad employees, and individuals employed in neighboring states. Analysis includes Community Rehabilitation and Treatment (CRT) clients aged 18 - 64 who were active during each reporting quarter and includes all employment reported for each quarter. Quarterly employment rates are lower than annual employment rates because not all clients who are employed during a year are employed during every quarter of the year.

## CRT Clients Employed (#) and Average Earnings for Employed Clients (\$) First Quarter (July - September) of Each Fiscal Year 2009 - 2018

Year	Clinic																		Statewide \$				
	CSAC		NCSS		HC		LCMH		HCRS		NKHS		CMC		RMHS		UCS			WCMH		PATH	
	#	\$	#	\$	#	\$	#	\$	#	\$	#	\$	#	\$	#	\$	#	\$		#	\$	#	\$
FY18	30	2,221	32	2,845	95	3,052	26	2,362	31	3,480	19	3,153	20	2,122	30	3,074	14	1,739	55	2,873	3	2,062	2,817
FY17	29	2,054	34	2,630	94	3,240	25	2,810	34	2,654	23	2,669	22	2,668	32	2,617	14	1,834	63	3,012	4	1,780	2,782
FY16	29	1,881	25	2,797	105	2,973	28	2,293	35	2,624	20	2,489	19	1,963	33	3,907	10	2,137	70	2,368	5	4,253	2,684
FY15	24	1,933	27	2,364	114	2,551	21	2,601	37	2,127	26	1,770	15	1,581	32	3,264	17	2,190	71	2,148			2,339
FY14	22	2,378	23	2,779	116	2,478	17	2,373	46	2,287	27	1,692	15	1,963	34	3,027	15	1,977	83	1,924			2,303
FY13	24	2,504	26	1,958	100	2,599	22	2,040	39	2,135	24	2,182	15	2,010	36	3,200	11	2,604	69	2,104			2,379
FY12	26	2,537	16	2,687	102	2,071	21	2,600	28	1,874	30	2,337	15	1,819	37	3,297	13	2,182	76	1,923			2,256
FY11	33	2,616	18	2,146	94	2,309	29	2,223	28	1,853	32	2,401	14	2,983	41	2,811	10	2,264	78	1,870			2,283
FY10	31	3,064	21	3,173	105	2,255	30	2,132	31	1,708	37	2,213	12	2,823	43	2,873	19	2,170	90	1,842			2,295
FY09	43	2,832	28	2,946	126	2,430	32	1,676	48	1,549	47	2,261	18	3,480	49	2,763	22	1,467	96	1,944			2,282

This report is based on record linkage of the Vermont Department of Mental Health (DMH) and Department of Labor (DOL) databases. DMH client data are submitted by Community Programs in conformance with contractual requirements. DOL data are submitted by employers in conformance with state and federal laws. Workers who are excluded from DOL reporting are the self-employed, firm owners not incorporated and the following employee groups: elected officials, employees of nonprofit religious, charitable and educational organizations, unpaid family members, farm workers (with some exceptions), railroad employees, and individuals employed in neighboring states. Analysis includes Community Rehabilitation and Treatment (CRT) clients aged 18 - 64 who were active during each reporting quarter and includes all employment reported for each quarter. Quarterly employment rates are lower than annual employment rates because not all clients who are employed during a year are employed during every quarter of the year.

## FY2018 First Quarter (July - September) Employment of Community Rehabilitation and Treatment Clients In Vermont

Clinic	Total Number Served	Employment		Wages Reported	
		Number Employed	Percent Employed	Total Wages	Wages per Employed Client
CSAC	129	30	23.3%	\$66,638	\$2,221
NCSS	168	32	19.0%	\$91,030	\$2,845
HC	506	95	18.8%	\$289,901	\$3,052
LCMH	102	26	25.5%	\$61,424	\$2,362
HCRS	313	31	9.9%	\$107,879	\$3,480
NKHS	193	19	9.8%	\$59,899	\$3,153
CMC	127	20	15.7%	\$42,431	\$2,122
RMHS	200	30	15.0%	\$92,224	\$3,074
UCS	105	14	13.3%	\$24,340	\$1,739
WCMH	254	55	21.7%	\$157,989	\$2,873
PATH	44	3	6.8%	\$6,186	\$2,062
Quarterly Total	2,141	355	16.6%	\$999,941	\$2,817

This report is based on record linkage of the Vermont Department of Mental Health (DMH) and Department of Labor (DOL) databases. DMH client data are submitted by Community Programs in conformance with contractual requirements. DOL data are submitted by employers in conformance with state and federal laws. Workers who are excluded from DOL reporting are the self-employed, firm owners not incorporated and the following employee groups: elected officials, employees of nonprofit religious, charitable and educational organizations, unpaid family members, farm workers (with some exceptions), railroad employees, and individuals employed in neighboring states. Analysis includes Community Rehabilitation and Treatment (CRT) clients aged 18 - 64 who were active during each reporting quarter and includes all employment reported for each quarter. Quarterly employment rates are lower than annual employment rates because not all clients who are employed during a year are employed during every quarter of the year.