

Vermont Mental Health Performance Indicator Project

Agency of Human Services, Department of Mental Health
26 Terrace Street, Montpelier, VT 05609

TO: Vermont Mental Health Performance Indicator Project
Advisory Group and Interested Parties

FROM: Tyler Blouin and Christopher Donnelly

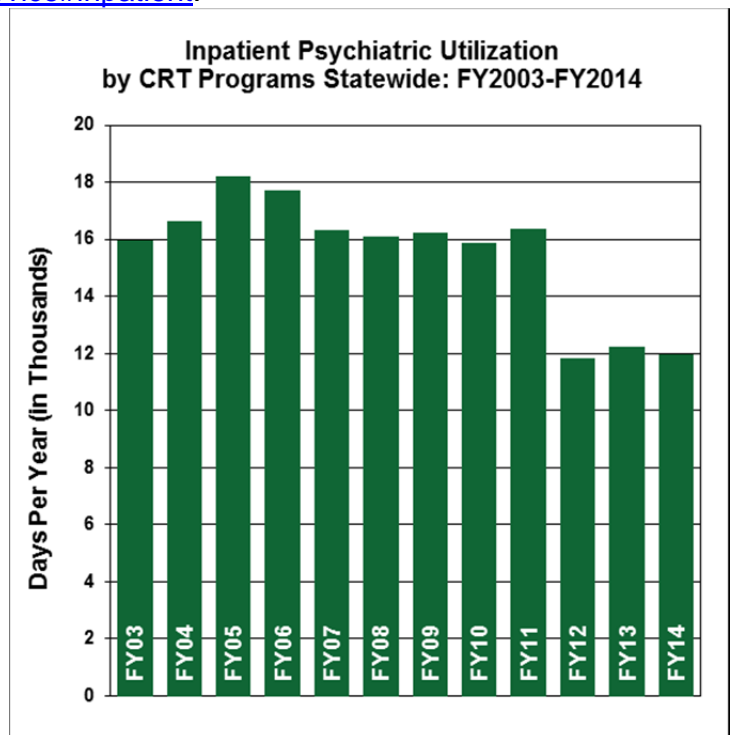
DATE: January 30, 2015

RE: Inpatient Psychiatric Utilization by CRT Programs FY2003–2014

This week's brief report provides information regarding the number of days that recipients of Community Rehabilitation and Treatment (CRT) services for adults with severe and persistent mental illness received inpatient psychiatric services at hospitals during fiscal years 2003-2014. This report is one of an on-going series of reports that examine inpatient service utilization by Vermont residents. Copies of previous reports are available online at: <http://mentalhealth.vermont.gov/report/pip/service#inpatient>.

This report is based on analysis of Monthly Service Report (MSR) data provided to the Vermont Department of Mental Health (DMH) by Designated Agencies (DAs) and CRT inpatient data maintained by the DMH Utilization Review Team. Analysis includes CRT inpatient days during fiscal years 2003-2014. Inpatient days include the day of admission and exclude the day of discharge. Days per CRT client are based on the total number of CRT clients served at each DA during each fiscal year.

As you will see, CRT client utilization statewide varied from more than 17,000 days in FY2005 and FY2006, to less than 12,000 in FY2012. There were substantial differences among DAs in average yearly inpatient utilization during the study period, ranging from more than 4,500 days per year at the HowardCenter (HC), to between 800 and 1,000 days at three agencies, to less than 500 days per year at Lamoille (LCMH).



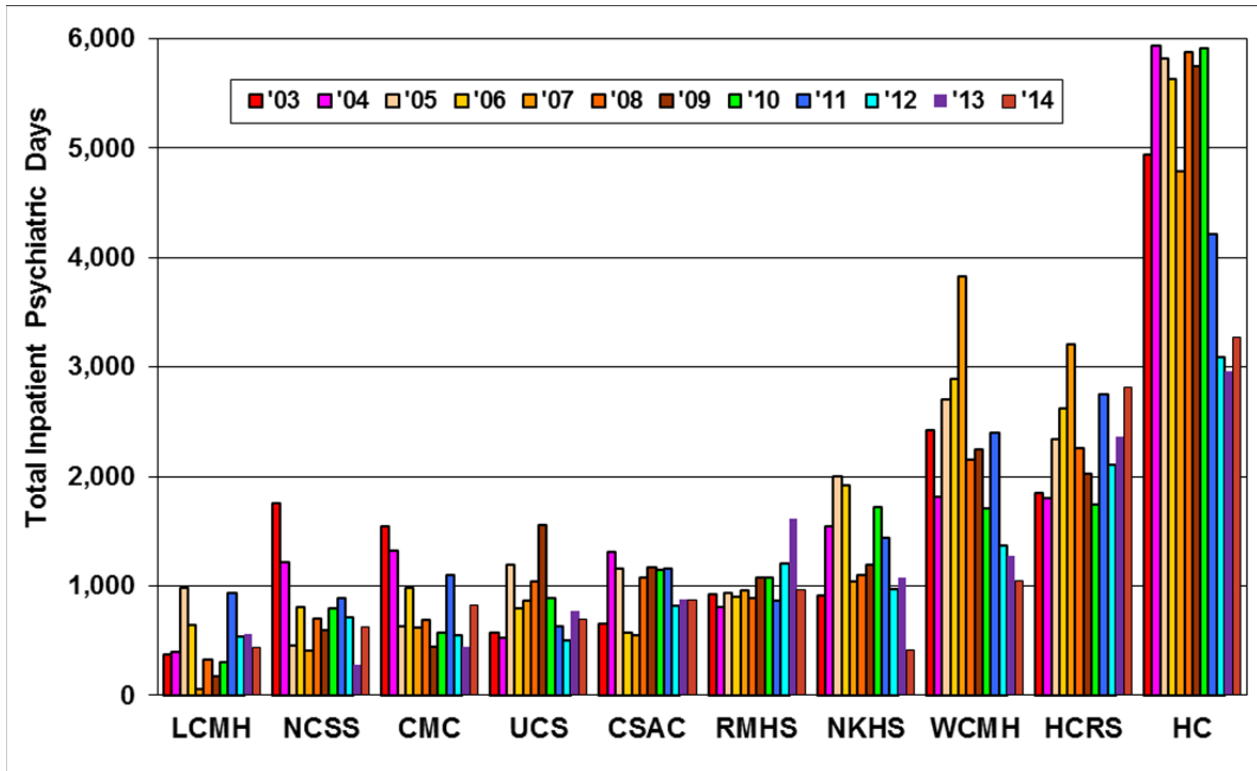
There were also substantial differences among DAs in average inpatient utilization per CRT client. Statewide, CRT clients used 5.1 inpatient days per year on average, with rates at DAs varying from 7.3 days per client at HC to less than 4 days per client at NCSS, NKHS, RMHS, and LCMH.

We look forward to your questions and comments about these findings, and your suggestions for further analyses of data regarding psychiatric inpatient services in Vermont. As always, we can be reached at pip@state.vt.us.

Inpatient Psychiatric Utilization by CRT Programs

Total Inpatient Days

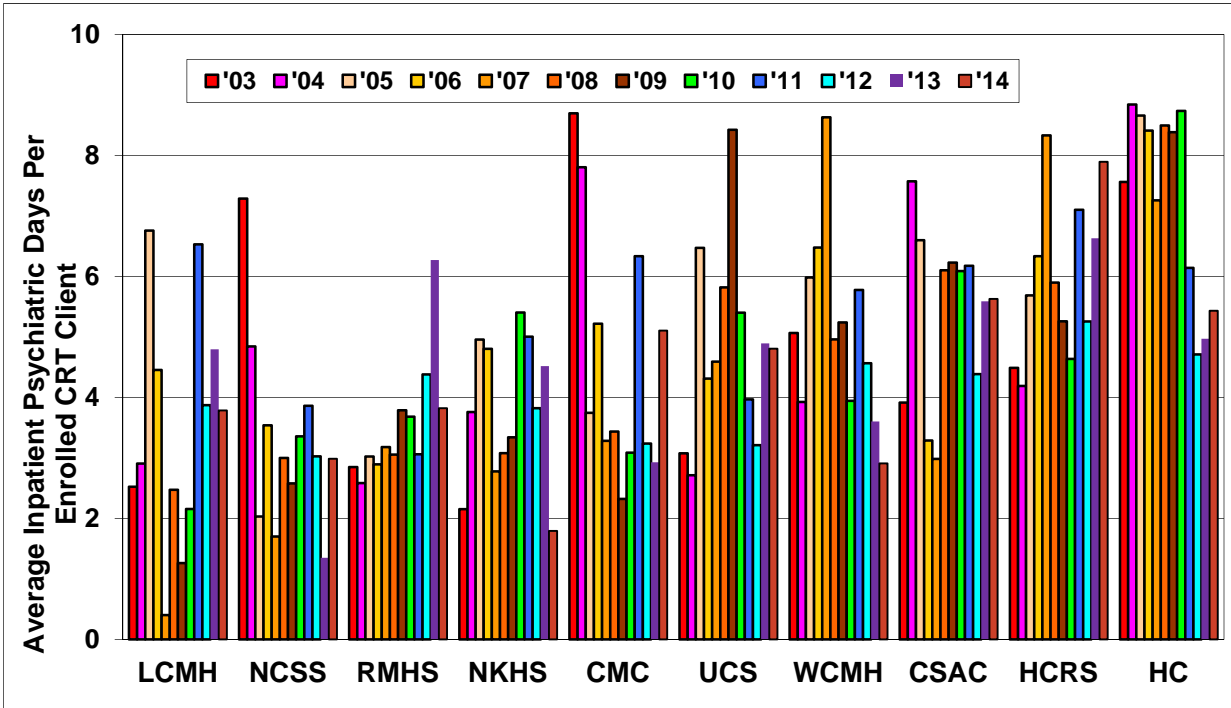
FY2003-FY2014



Designated Agency	Total Inpatient Psychiatric Days												Avg.
	FY03	FY04	FY05	FY06	FY07	FY08	FY09	FY10	FY11	FY12	FY13	FY14	
LCMH	371	401	980	637	57	329	174	304	934	542	561	439	477
NCSS	1,756	1,211	457	807	408	696	601	792	888	708	282	627	769
CMC	1,548	1,319	633	976	617	684	446	577	1,096	547	448	822	809
UCS	575	521	1,191	789	868	1,036	1,550	891	627	501	773	692	835
CSAC	650	1,310	1,155	572	549	1,080	1,165	1,151	1,161	820	872	867	946
RMHS	923	801	931	897	960	889	1,076	1,075	863	1,200	1,618	967	1,017
NKHS	913	1,545	1,998	1,921	1,044	1,102	1,193	1,724	1,441	971	1,080	414	1,279
WCMH	2,426	1,814	2,704	2,889	3,824	2,153	2,248	1,704	2,403	1,370	1,279	1,042	2,155
HCRS	1,845	1,797	2,343	2,623	3,208	2,253	2,019	1,739	2,749	2,102	2,367	2,819	2,322
HC	4,939	5,934	5,819	5,628	4,790	5,880	5,743	5,915	4,219	3,086	2,958	3,271	4,849
Statewide	15,946	16,653	18,211	17,739	16,325	16,102	16,215	15,872	16,381	11,847	12,238	11,960	15,457

Analysis based on the "CRT Inpatient Data" set maintained by the VT Department of Mental Health (DMH) Care Management Team and Monthly Service Report (MSR) data provided to DMH by the designated community agencies (DA). Includes CRT client inpatient days at the Vermont State Hospital (VSH) and other hospitals during each fiscal year during July 2002 through June 2014. Community Rehabilitation and Treatment (CRT) status based on program status at admission to inpatient. Days include the day of admission but exclude the day of discharge. Days per CRT client are based on the number of clients with a program assignment of CRT and the total number of psychiatric inpatient days during each fiscal year.

Inpatient Psychiatric Utilization by CRT Programs Average Days per Enrolled Client FY2003-FY2014



Designated Agency	Average Inpatient Psychiatric Days Per Enrolled CRT Client												Avg.
	FY03	FY04	FY05	FY06	FY07	FY08	FY09	FY10	FY11	FY12	FY13	FY14	
LCMH	2.5	2.9	6.8	4.5	0.4	2.5	1.3	2.2	6.5	3.9	4.8	3.8	3.5
NCSS	7.3	4.8	2.0	3.5	1.7	3.0	2.6	3.4	3.9	3.0	1.3	3.0	3.3
RMHS	2.8	2.6	3.0	2.9	3.2	3.1	3.8	3.7	3.1	4.4	6.3	3.8	3.5
NKHS	2.2	3.8	5.0	4.8	2.8	3.1	3.3	5.4	5.0	3.8	4.5	1.8	3.8
CMC	8.7	7.8	3.7	5.2	3.3	3.4	2.3	3.1	6.3	3.2	2.9	5.1	4.6
UCS	3.1	2.7	6.5	4.3	4.6	5.8	8.4	5.4	4.0	3.2	4.9	4.8	4.8
WCMH	5.1	3.9	6.0	6.5	8.6	5.0	5.2	3.9	5.8	4.6	3.6	2.9	5.1
CSAC	3.9	7.6	6.6	3.3	3.0	6.1	6.2	6.1	6.2	4.4	5.6	5.6	5.4
HCRS	4.5	4.2	5.7	6.3	8.3	5.9	5.3	4.6	7.1	5.3	6.6	7.9	6.0
HC	7.6	8.8	8.7	8.4	7.3	8.5	8.4	8.7	6.1	4.7	5.0	5.4	7.3
Statewide	5.0	5.2	5.8	5.6	5.3	5.2	5.3	5.3	5.5	4.3	4.7	3.6	5.1

Analysis based on the "CRT Inpatient Data" set maintained by the VT Department of Mental Health (DMH) Care Management Team and Monthly Service Report (MSR) data provided to DMH by the designated community agencies (DA). Includes CRT client patient days at the Vermont State Hospital (VSH) and other hospitals during each fiscal year during July 2002 through June 2014. Community Rehabilitation and Treatment (CRT) status based on program status at admission to inpatient. Days include the day of admission but exclude the day of discharge. Days per CRT client are based on the number of clients with a program assignment of CRT and the total number of psychiatric inpatient days during each fiscal year.