

Vermont Mental Health Performance Indicator Project

Vermont Agency of Human Services, Department of Mental Health
280 State Drive NOB 2 North, Waterbury, Vermont 05671

TO: Vermont Mental Health Performance Indicator Project
Advisory Group and Interested Parties

FROM: Sheila Leno

DATE: December 30, 2016

RE: Employment of CRT Clients: Q4 of FY2016

This week's brief report provides FY2016 fourth quarter employment rates for clients served by Vermont's Community Rehabilitation and Treatment (CRT) programs for adults with serious mental illness. This report also includes rates for fourth quarters (April through June) of nine previous fiscal years, FY2007 through FY2015. Previous reports regarding employment rates are available online at:

<http://mentalhealth.vermont.gov/report/pip/sector#employment>.

This report, like previous reports in this series, is based on analysis of client data submitted to the Vermont Department of Mental Health (DMH) by designated community mental health agencies and Vermont employment data submitted to DMH by the Vermont Department of Labor (DOL).

As you will see, statewide fourth quarter CRT employment rates decreased from 20.1% in FY2007 to 13.8% in FY2011. In FY2016 the employment rate was 16.2%.

During the fourth quarter of FY2016, Washington had the state's highest employment rate (25.9%), followed by Lamoille (23.4%). The lowest employment rates were in Bennington and Southeast (6.7% and 9.3%, respectively).

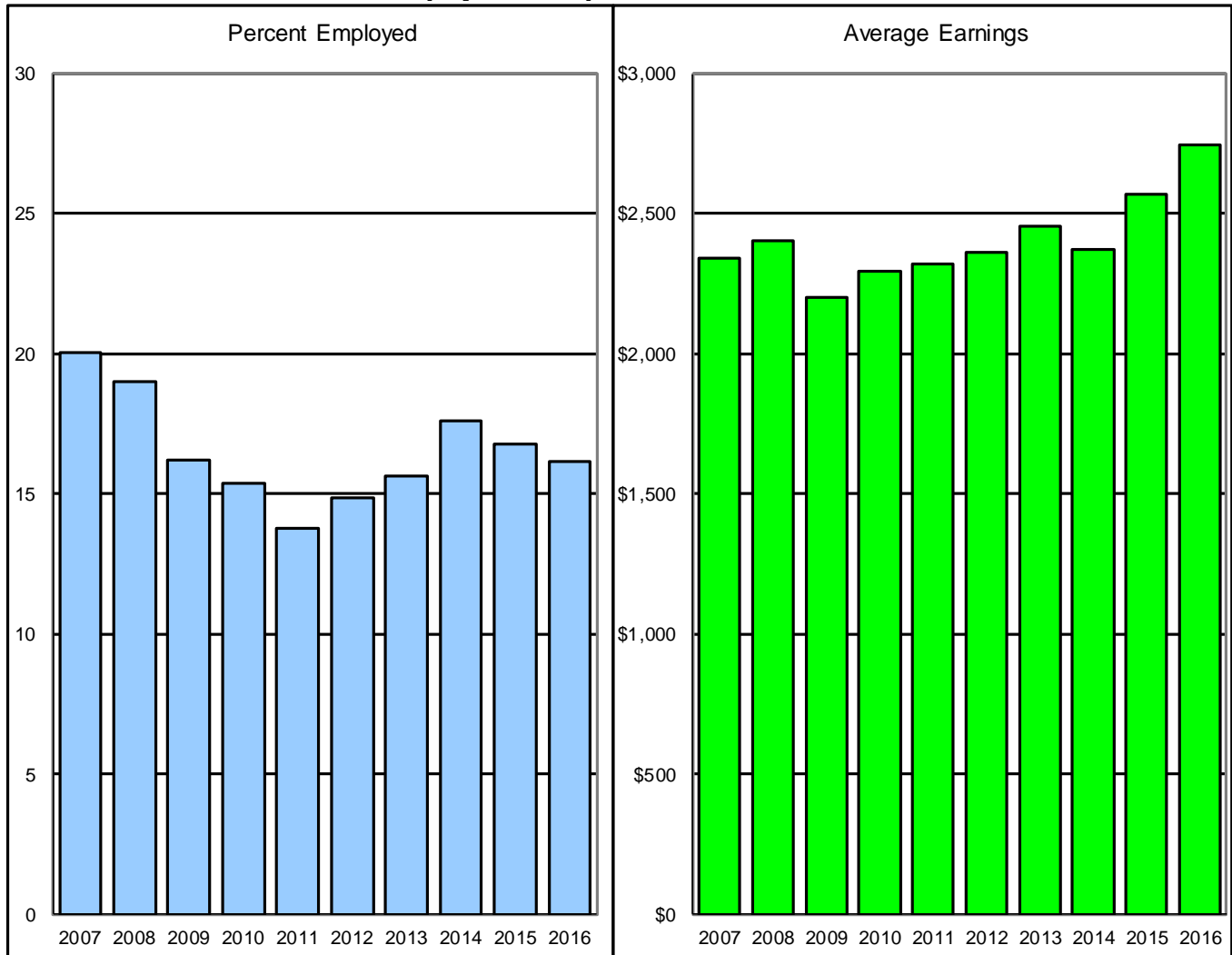
Statewide, average fourth quarter earnings per employed CRT client increased from \$2,572 in the fourth quarter of FY2015 to \$2,747 in the fourth quarter of FY2016. During the ten years covered by this report, statewide fourth quarter earnings per employed CRT client varied from a low of \$2,202 in FY2009 to a high of \$2,747 in FY2016.

During the fourth quarter of FY2016, Rutland had the highest reported fourth quarter earnings per employed client (\$3,770), followed by Chittenden (\$3,490) and Northwest (\$3,159). The lowest fourth quarter earnings per employed client were in Pathways (\$1,441), Addison (\$2,001) and Bennington (\$2,017).

As always, we look forward to your comments and your suggestions for further analyses of these data. You can reach us by e-mail at ahs.dmhpip@vermont.gov.

Statewide CRT Employment Rates and Average Earnings

Fourth Quarter (Apr-Jun) of Fiscal Years 2007 - 2016

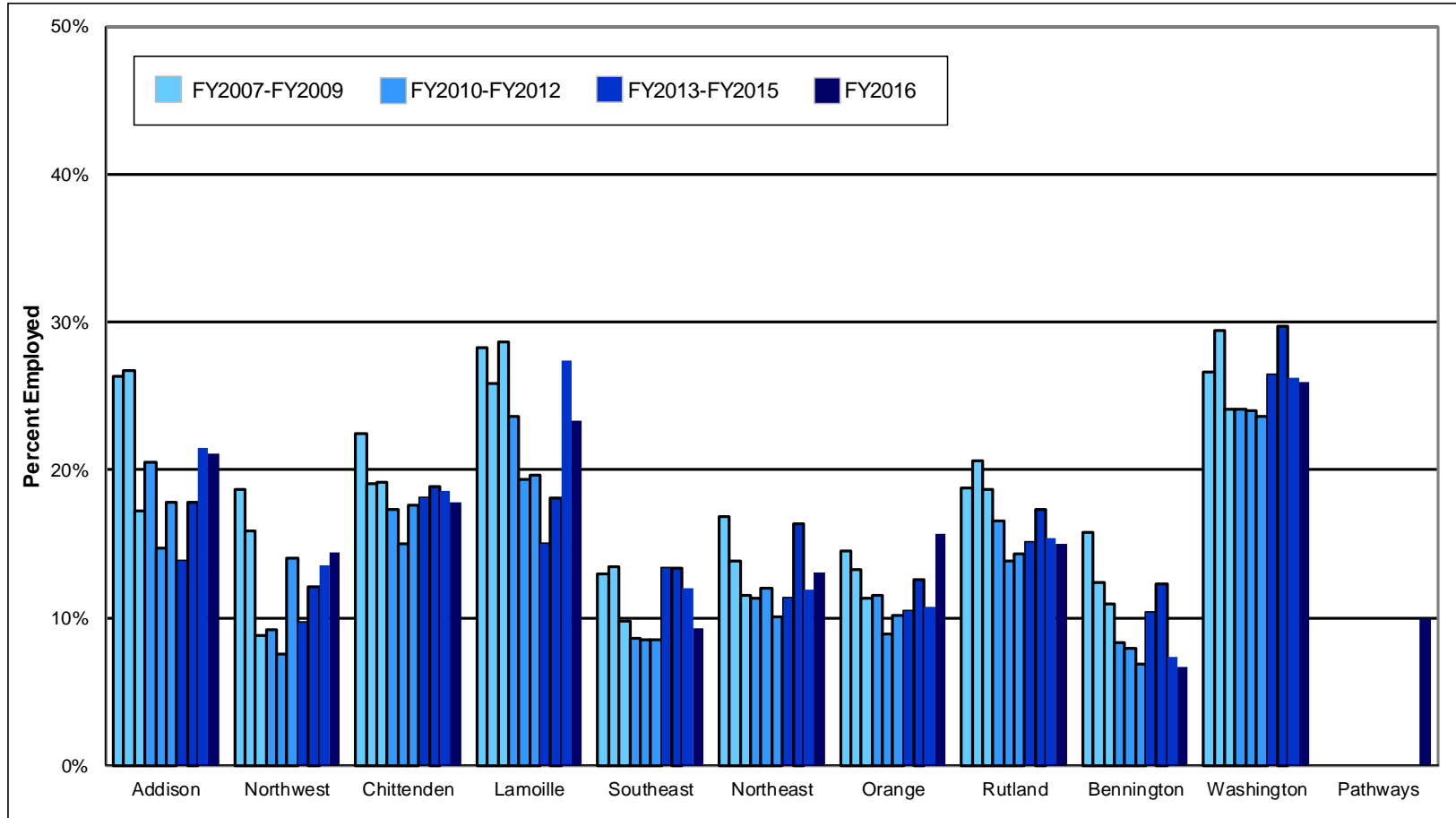


	Fourth Quarter of Fiscal Year									
	<u>2007</u>	<u>2008</u>	<u>2009</u>	<u>2010</u>	<u>2011</u>	<u>2012</u>	<u>2013</u>	<u>2014</u>	<u>2015</u>	<u>2016</u>
% Employed	20.1	19.0	16.2	15.4	13.8	14.8	15.6	17.6	16.8	16.2
\$ per Employed Client	2,343	2,404	2,202	2,297	2,318	2,363	2,457	2,375	2,572	2,747

This report is based on analysis of the Vermont Department of Mental Health (DMH) and Department of Labor (DOL) databases. DMH client data are submitted by community programs in conformance with contractual requirements. DOL data are submitted by employers in conformance with state and federal laws. Workers who are excluded from DOL reporting are the self-employed, firm owners not incorporated and the following employee groups: elected officials, employees of nonprofit religious, charitable and educational organizations, unpaid family members, farm workers (with some exceptions), railroad employees, and employment in neighboring states. Analysis includes Community Rehabilitation and Treatment (CRT) clients aged 18 - 64 who were active during each reporting quarter and includes all employment reported for each quarter. Quarterly employment rates are lower than annual employment rates because not all clients who are employed during a year are employed during every quarter of the year.

CRT Clients Employed

Fourth Quarter (Apr-Jun) of Fiscal Years 2007 - 2016



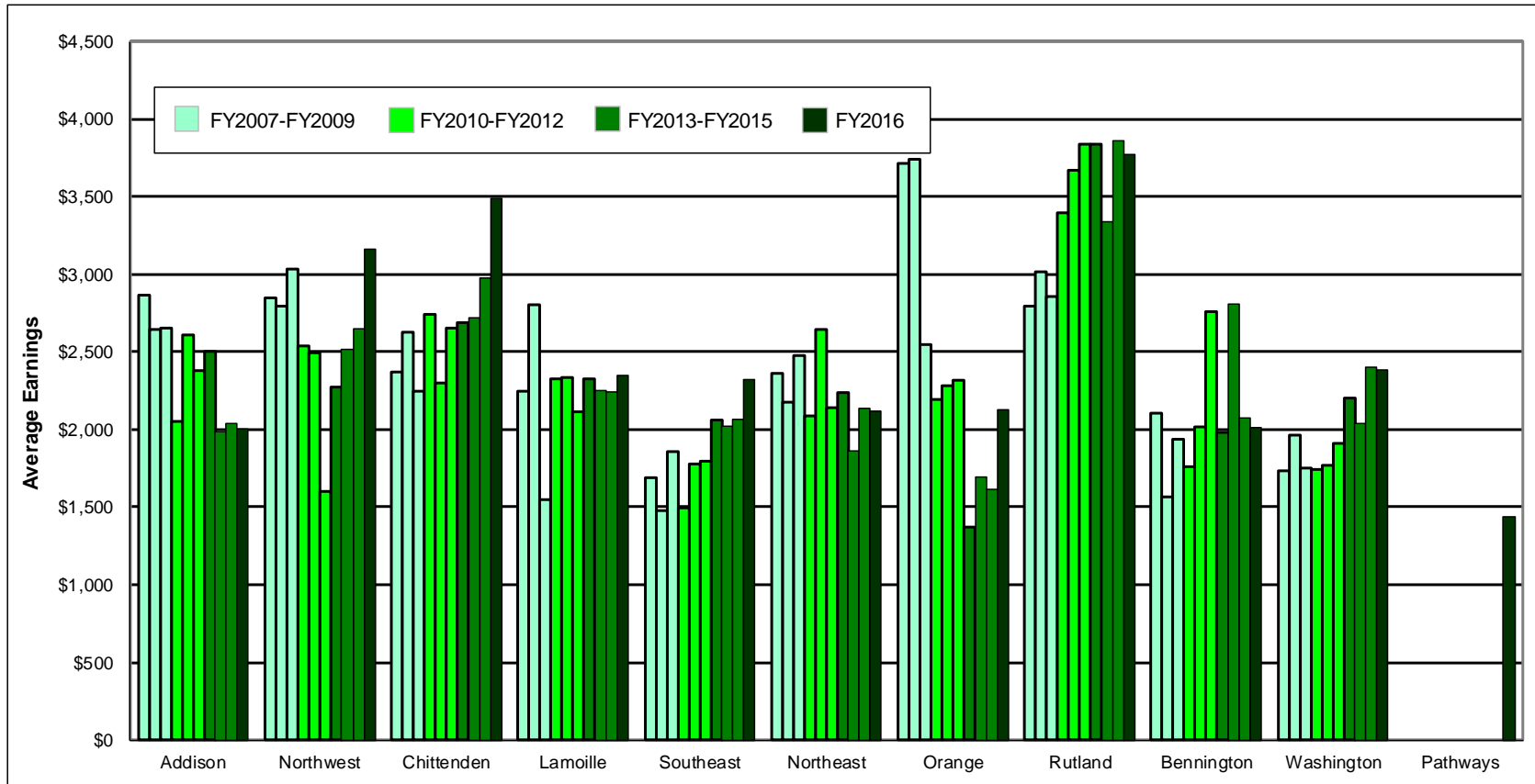
This report is based on analysis of the Vermont Department of Mental Health (DMH) and Department of Labor (DOL) databases. DMH client data are submitted by community programs in conformance with contractual requirements. DOL data are submitted by employers in conformance with state and federal laws. Workers who are excluded from DOL reporting are the self-employed, firm owners not incorporated and the following employee groups: elected officials, employees of nonprofit religious, charitable and educational organizations, unpaid family members, farm workers (with some exceptions), railroad employees, and employment in neighboring states. Analysis includes Community Rehabilitation and Treatment (CRT) clients aged 18 - 64 who were active during each reporting quarter and includes all employment reported for each quarter. Quarterly employment rates are lower than annual employment rates because not all clients who are employed during a year are employed during every quarter of the year.

Total CRT Clients Served (#) and Percent Employed (%) Fourth Quarter (Apr-Jun) of Fiscal Years 2007 - 2016

Year	Region																							
	Addison		Northwest		Chittenden		Lamoille		Southeast		Northeast		Orange		Rutland		Bennington		Washington		Pathways		Statewide	
	#	%	#	%	#	%	#	%	#	%	#	%	#	%	#	%	#	%	#	%	#	%	#	%
FY16	142	21.1	180	14.4	518	17.8	107	23.4	323	9.3	214	13.1	134	15.7	213	15.0	120	6.7	266	25.9	40	10.0	2,257	16.2
FY15	135	21.5	185	13.5	537	18.6	106	27.4	316	12.0	193	11.9	130	10.8	214	15.4	123	7.3	271	26.2			2,210	16.8
FY14	146	17.8	190	12.1	562	18.9	105	18.1	330	13.3	196	16.3	127	12.6	208	17.3	138	12.3	276	29.7			2,278	17.6
FY13	151	13.9	196	9.7	563	18.1	100	15.0	343	13.4	202	11.4	134	10.4	218	15.1	125	10.4	295	26.4			2,327	15.6
FY12	152	17.8	200	14.0	552	17.6	112	19.6	343	8.5	229	10.0	138	10.1	237	14.3	132	6.8	318	23.6			2,413	14.8
FY11	163	14.7	198	7.6	574	15.0	119	19.3	341	8.5	251	12.0	135	8.9	245	13.9	139	7.9	337	24.0			2,502	13.8
FY10	161	20.5	196	9.2	573	17.3	110	23.6	325	8.6	274	11.3	130	11.5	230	16.5	145	8.3	344	24.1			2,488	15.4
FY09	157	17.2	194	8.8	574	19.2	115	28.7	338	9.8	304	11.5	141	11.3	236	18.6	165	10.9	348	24.1			2,572	16.2
FY08	161	26.7	195	15.9	571	19.1	116	25.9	341	13.5	319	13.8	151	13.2	228	20.6	161	12.4	347	29.4			2,590	19.0
FY07	156	26.3	209	18.7	560	22.5	124	28.2	347	13.0	327	16.8	158	14.6	245	18.8	171	15.8	361	26.6			2,658	20.1

This report is based on analysis of the Vermont Department of Mental Health (DMH) and Department of Labor (DOL) databases. DMH client data are submitted by community programs in conformance with contractual requirements. DOL data are submitted by employers in conformance with state and federal laws. Workers who are excluded from DOL reporting are the self-employed, firm owners not incorporated and the following employee groups: elected officials, employees of nonprofit religious, charitable and educational organizations, unpaid family members, farm workers (with some exceptions), railroad employees, and employment in neighboring states. Analysis includes Community Rehabilitation and Treatment (CRT) clients aged 18 - 64 who were active during each reporting quarter and includes all employment reported for each quarter. Quarterly employment rates are lower than annual employment rates because not all clients who are employed during a year are employed during every quarter of the year.

Average Earnings for Employed CRT Clients Fourth Quarter (Apr-Jun) of Fiscal Years 2007 - 2016



This report is based on analysis of the Vermont Department of Mental Health (DMH) and Department of Labor (DOL) databases. DMH client data are submitted by community programs in conformance with contractual requirements. DOL data are submitted by employers in conformance with state and federal laws. Workers who are excluded from DOL reporting are the self-employed, firm owners not incorporated and the following employee groups: elected officials, employees of nonprofit religious, charitable and educational organizations, unpaid family members, farm workers (with some exceptions), railroad employees, and employment in neighboring states. Analysis includes Community Rehabilitation and Treatment (CRT) clients aged 18 - 64 who were active during each reporting quarter and includes all employment reported for each quarter. Quarterly employment rates are lower than annual employment rates because not all clients who are employed during a year are employed during every quarter of the year.

CRT Clients Employed (#) and Average Earnings for Employed Clients (\$) Fourth Quarter (Apr-Jun) of Fiscal Years 2007 - 2016

Year	Region																			Statewide \$			
	Addison		Northwest		Chittenden		Lamoille		Southeast		Northeast		Orange		Rutland		Bennington		Washington		Pathways		
	#	\$	#	\$	#	\$	#	\$	#	\$	#	\$	#	\$	#	\$	#	\$	#	\$	#	\$	
FY16	30	2,001	26	3,159	92	3,490	25	2,350	30	2,324	28	2,121	21	2,127	32	3,770	8	2,017	69	2,381	4	1,441	2,747
FY15	29	2,044	25	2,649	100	2,974	29	2,242	38	2,062	23	2,137	14	1,613	33	3,857	9	2,077	71	2,398			2,572
FY14	26	1,984	23	2,518	106	2,722	19	2,251	44	2,025	32	1,866	16	1,694	36	3,344	17	2,808	82	2,044			2,375
FY13	21	2,499	19	2,273	102	2,688	15	2,327	46	2,059	23	2,235	14	1,372	33	3,842	13	1,980	78	2,200			2,457
FY12	27	2,377	28	1,598	97	2,657	22	2,110	29	1,797	23	2,142	14	2,317	34	3,842	9	2,764	75	1,913			2,363
FY11	24	2,611	15	2,491	86	2,299	23	2,334	29	1,782	30	2,647	12	2,279	34	3,668	11	2,020	81	1,765			2,318
FY10	33	2,049	18	2,538	99	2,740	26	2,327	28	1,495	31	2,085	15	2,194	38	3,399	12	1,758	83	1,747			2,297
FY09	27	2,657	17	3,038	110	2,251	33	1,548	33	1,861	35	2,477	16	2,545	44	2,855	18	1,934	84	1,748			2,202
FY08	43	2,644	31	2,795	109	2,628	30	2,809	46	1,475	44	2,179	20	3,742	47	3,018	20	1,563	102	1,962			2,404
FY07	41	2,862	39	2,848	126	2,371	35	2,248	45	1,687	55	2,361	23	3,714	46	2,797	27	2,109	96	1,734			2,343

This report is based on analysis of the Vermont Department of Mental Health (DMH) and Department of Labor (DOL) databases. DMH client data are submitted by community programs in conformance with contractual requirements. DOL data are submitted by employers in conformance with state and federal laws. Workers who are excluded from DOL reporting are the self-employed, firm owners not incorporated and the following employee groups: elected officials, employees of nonprofit religious, charitable and educational organizations, unpaid family members, farm workers (with some exceptions), railroad employees, and employment in neighboring states. Analysis includes Community Rehabilitation and Treatment (CRT) clients aged 18 - 64 who were active during each reporting quarter and includes all employment reported for each quarter. Quarterly employment rates are lower than annual employment rates because not all clients who are employed during a year are employed during every quarter of the year.

Fourth Quarter FY2016 Employment of Community Rehabilitation and Treatment Clients In Vermont

Region	Total Number Served	Employment		Wages Reported	
		Number Employed	Percent Employed	Total Wages	Wages per Employed Client
Addison	142	30	21.1%	\$60,029	\$2,001
Northwest	180	26	14.4%	\$82,127	\$3,159
Chittenden	518	92	17.8%	\$321,100	\$3,490
Lamoille	107	25	23.4%	\$58,758	\$2,350
Southeast	323	30	9.3%	\$69,722	\$2,324
Northeast	214	28	13.1%	\$59,375	\$2,121
Orange	134	21	15.7%	\$44,674	\$2,127
Rutland	213	32	15.0%	\$120,636	\$3,770
Bennington	120	8	6.7%	\$16,135	\$2,017
Washington	266	69	25.9%	\$164,304	\$2,381
Pathways	40	4	10.0%	\$5,762	\$1,441
Quarterly Total	2,257	365	16.2%	\$1,002,622	\$2,747

This report is based on analysis of the Vermont Department of Mental Health (DMH) and Department of Labor (DOL) databases. DMH client data are submitted by community programs in conformance with contractual requirements. DOL data are submitted by employers in conformance with state and federal laws. Workers who are excluded from DOL reporting are the self-employed, firm owners not incorporated and the following employee groups: elected officials, employees of nonprofit religious, charitable and educational organizations, unpaid family members, farm workers (with some exceptions), railroad employees, and employment in neighboring states. Analysis includes Community Rehabilitation and Treatment (CRT) clients aged 18 - 64 who were active during each reporting quarter and includes all employment reported for each quarter. Quarterly employment rates are lower than annual employment rates because not all clients who are employed during a year are employed during every quarter of the year.