

Vermont Mental Health Performance Indicator Project

Vermont Agency of Human Services, Department of Mental Health
280 State Drive NOB 2 North, Waterbury, Vermont 05671

TO: Vermont Mental Health Performance Indicator Project
Advisory Group and Interested Parties

FROM: Sheila Leno

DATE: December 16, 2016

RE: Employment of CRT Clients: Third Quarters (Jan-Mar) of FY2007-FY2016

This week's PIP provides third quarter employment rates (January through March) of ten fiscal years, FY2007 through FY2016, for clients served by Vermont's Community Rehabilitation and Treatment (CRT) programs for adults with serious mental illness. Previous reports in this series are available online at:
<http://mentalhealth.vermont.gov/report/pip/sector#employment>.

Like previous reports in this series, this report is based on analysis of data submitted to the Vermont Department of Mental Health (DMH) by the ten designated agencies and data obtained from the Vermont Department of Labor (DOL). More detail regarding DOL employment data are provided in each of the attached tables.

During the years covered by this report, statewide third quarter employment rates of CRT clients varied from a high of 19.2% in FY2008 to a low of 13.3% in FY2011. Since FY2011, the employment rate has steadily increased to 16.6% in FY2016. During the third quarter of FY2016, Washington (WCMH) and Addison (CSAC) had the highest employment rates (28.0% and 24.6%, respectively), followed by Lamoille (LCMH) with 23.5%. The lowest employment rates during the third quarter of FY2016 were in Bennington (UCS) with 7.4% and Northeast (NKHS) with 8.6%.

Statewide, average third quarter earnings of employed CRT clients during the ten years covered by this report has stayed relatively level with a slight increase in FY2016. Rutland (RMHS) had the highest FY2016 third quarter earnings per employed client (\$5,273), followed by Chittenden (HC; \$2,858) and Northwest (NCSS; \$2,529). The lowest FY2016 third quarter earnings were in Pathways (PATH; \$868) and Addison (CSAC; \$1,725).

We look forward to your comments and your suggestions for further analyses of these data. As always, you can reach us by e-mail at ahs.dmhpip@vermont.gov.

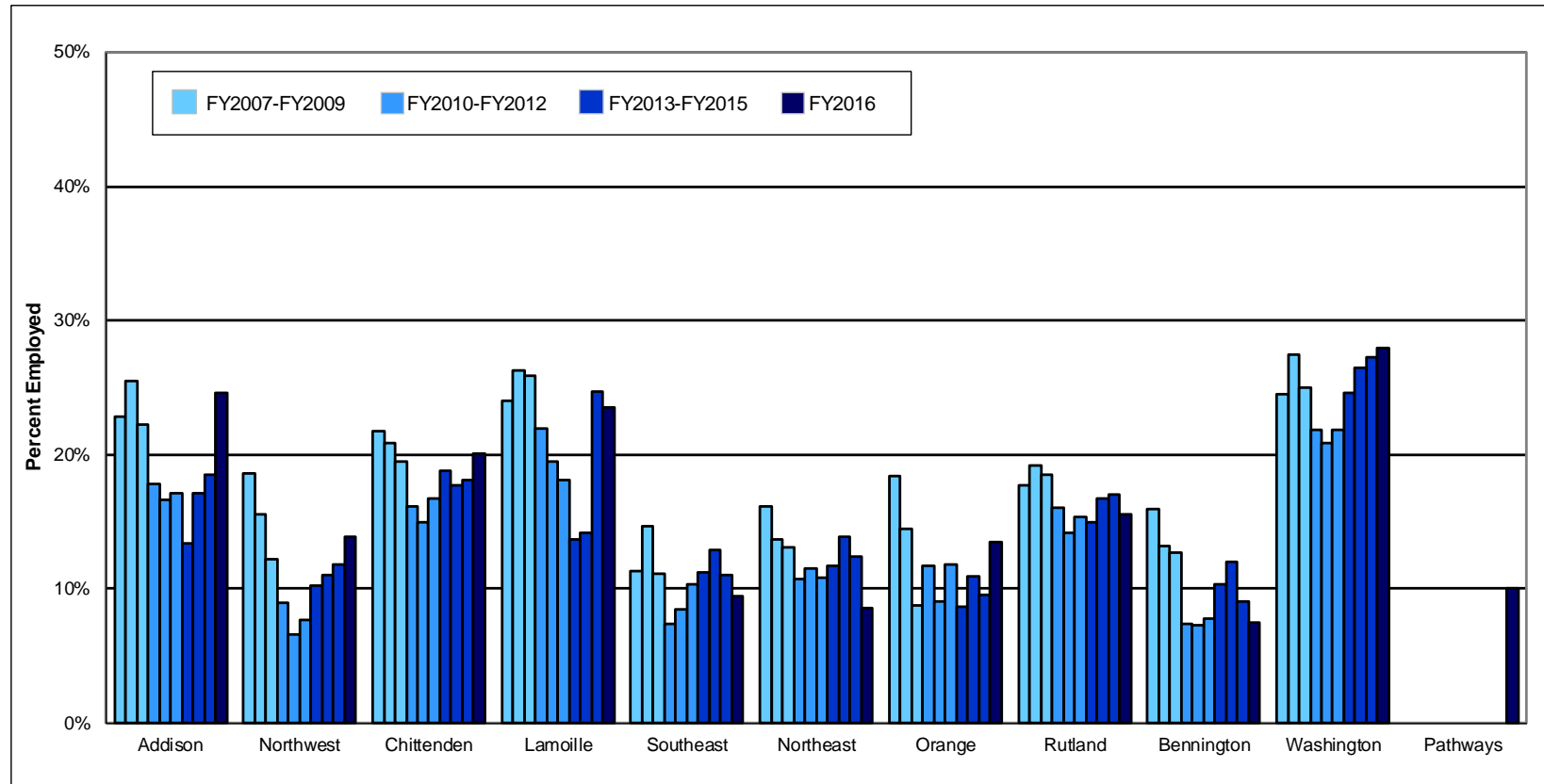
Statewide CRT Employment Rates and Average Earnings Third Quarter (Jan-Mar) of Fiscal Years 2007 - 2016



	Third Quarter of Fiscal Year									
	<u>2007</u>	<u>2008</u>	<u>2009</u>	<u>2010</u>	<u>2011</u>	<u>2012</u>	<u>2013</u>	<u>2014</u>	<u>2015</u>	<u>2016</u>
% Employed	19.1%	19.2%	17.1%	14.2%	13.3%	14.4%	15.1%	16.2%	16.5%	16.6%
\$ / Employed Client	\$2,329	\$2,397	\$2,350	\$2,209	\$2,348	\$2,308	\$2,318	\$2,301	\$2,338	\$2,611

This report is based on analysis of the Vermont Department of Mental Health (DMH) and Department of Labor (DOL) databases, and includes individuals served by Community and Rehabilitation Treatment (CRT) programs for adults with serious mental illness. DMH client data are submitted by Community Programs in conformance with contractual requirements. DOL data are submitted by employers in conformance with state and federal laws. Workers who are excluded from DOL reporting are the self-employed, firm owners not incorporated and the following employee groups: elected officials, employees of nonprofit religious, charitable and educational organizations, unpaid family members, farm workers (with some exceptions), railroad employees, and individuals employed in neighboring states. Analysis includes all employment reported for CRT clients aged 18-64 who were active during each reporting quarter. Quarterly employment rates are lower than annual employment rates because not all clients who are employed during a year are employed during every quarter of the year.

Percent of CRT Clients Employed Third Quarter (Jan-Mar) of Fiscal Years 2007 - 2016



This report is based on analysis of the Vermont Department of Mental Health (DMH) and Department of Labor (DOL) databases, and includes individuals served by Community and Rehabilitation Treatment (CRT) programs for adults with serious mental illness. DMH client data are submitted by Community Programs in conformance with contractual requirements. DOL data are submitted by employers in conformance with state and federal laws. Workers who are excluded from DOL reporting are the self-employed, firm owners not incorporated and the following employee groups: elected officials, employees of nonprofit religious, charitable and educational organizations, unpaid family members, farm workers (with some exceptions), railroad employees, and individuals employed in neighboring states. Analysis includes all employment reported for CRT clients aged 18-64 who were active during each reporting quarter. Quarterly employment rates are lower than annual employment rates because not all clients who are employed during a year are employed during every quarter of the year.

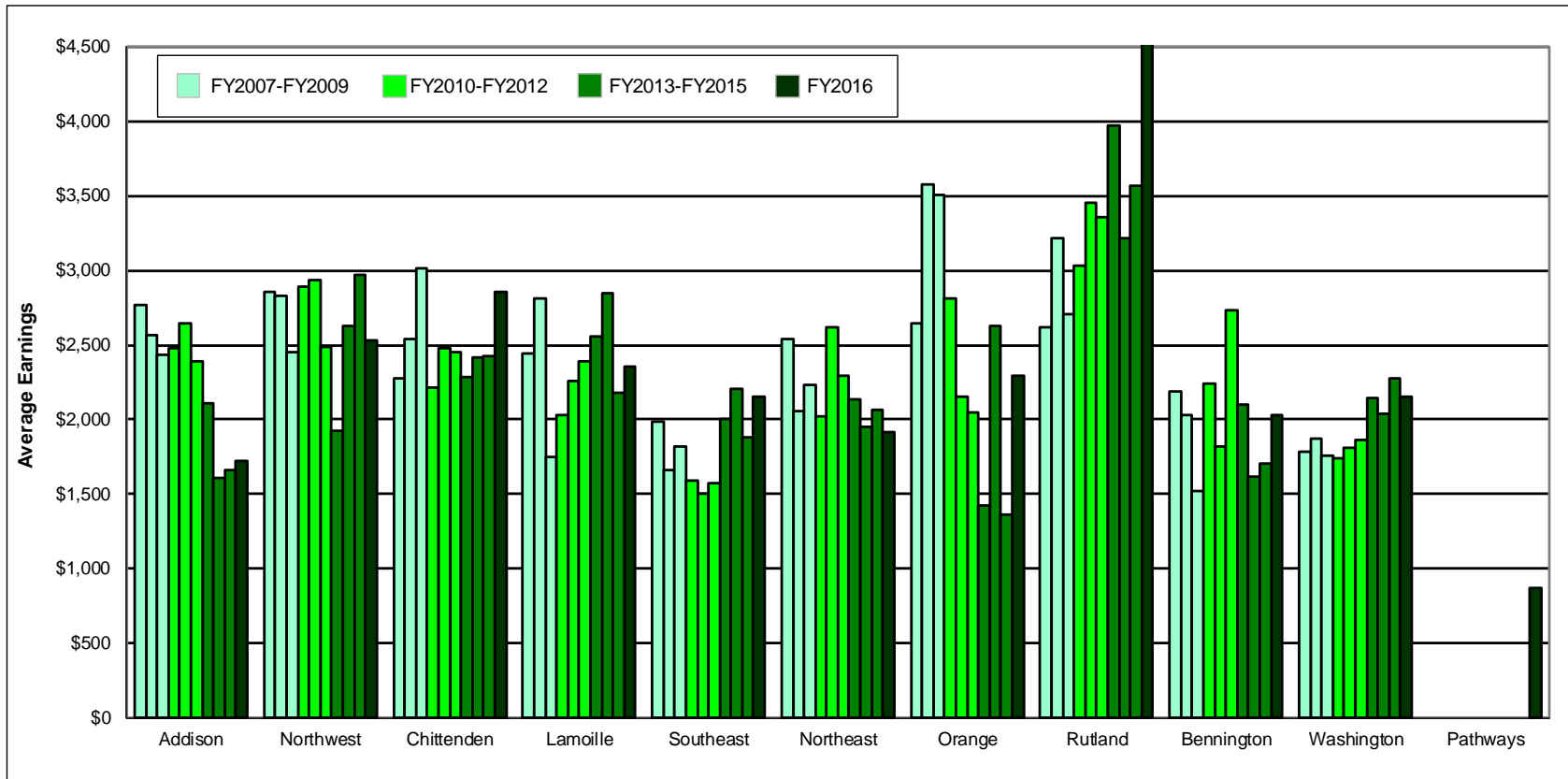
Total CRT Clients Served (#) and Percent Employed (%)
Third Quarter (Jan-Mar) of Fiscal Years 2007 - 2016

Year	Region																				Total %		
	Addison		Northwest		Chittenden		Lamoille		Southeast		Northeast		Orange		Rutland		Bennington		Washington			Pathways	
	#	%	#	%	#	%	#	%	#	%	#	%	#	%	#	%	#	%	#	%	#	%	
FY16	138	24.6	180	13.9	519	20.0	102	23.5	327	9.5	209	8.6	126	13.5	218	15.6	121	7.4	261	28.0	40	10.0	16.6
FY15	135	18.5	186	11.8	545	18.2	105	24.8	307	11.1	194	12.4	125	9.6	211	17.1	121	9.1	271	27.3			16.5
FY14	146	17.1	190	11.1	558	17.7	99	14.1	334	12.9	201	13.9	128	10.9	203	16.7	133	12.0	283	26.5			16.2
FY13	149	13.4	196	10.2	557	18.9	102	13.7	346	11.3	214	11.7	127	8.7	220	15.0	126	10.3	297	24.6			15.1
FY12	152	17.1	196	7.7	560	16.8	116	18.1	338	10.4	231	10.8	135	11.9	235	15.3	129	7.8	325	21.8			14.4
FY11	162	16.7	197	6.6	576	14.9	113	19.5	343	8.5	260	11.5	133	9.0	233	14.2	137	7.3	335	20.9			13.3
FY10	163	17.8	200	9.0	587	16.2	114	21.9	338	7.4	288	10.8	137	11.7	230	16.1	148	7.4	347	21.9			14.2
FY09	166	22.3	196	12.2	575	19.5	112	25.9	343	11.1	306	13.1	148	8.8	238	18.5	165	12.7	348	25.0			17.1
FY08	161	25.5	199	15.6	555	20.9	118	26.3	354	14.7	321	13.7	159	14.5	234	19.2	167	13.2	361	27.4			19.2
FY07	153	22.9	204	18.6	564	21.8	125	24.0	343	11.4	353	16.1	168	18.5	243	17.7	169	16.0	367	24.5			19.1

This report is based on analysis of the Vermont Department of Mental Health (DMH) and Department of Labor (DOL) databases, and includes individuals served by Community and Rehabilitation Treatment (CRT) programs for adults with serious mental illness. DMH client data are submitted by Community Programs in conformance with contractual requirements. DOL data are submitted by employers in conformance with state and federal laws. Workers who are excluded from DOL reporting are the self-employed, firm owners not incorporated and the following employee groups: elected officials, employees of nonprofit religious, charitable and educational organizations, unpaid family members, farm workers (with some exceptions), railroad employees, and individuals employed in neighboring states. Analysis includes all employment reported for CRT clients aged 18-64 who were active during each reporting quarter. Quarterly employment rates are lower than annual employment rates because not all clients who are employed during a year are employed during every quarter of the year.

Average Earnings for Employed CRT Clients

Third Quarter (Jan-Mar) of Fiscal Years 2007 - 2016



This report is based on analysis of the Vermont Department of Mental Health (DMH) and Department of Labor (DOL) databases, and includes individuals served by Community and Rehabilitation Treatment (CRT) programs for adults with serious mental illness. DMH client data are submitted by Community Programs in conformance with contractual requirements. DOL data are submitted by employers in conformance with state and federal laws. Workers who are excluded from DOL reporting are the self-employed, firm owners not incorporated and the following employee groups: elected officials, employees of nonprofit religious, charitable and educational organizations, unpaid family members, farm workers (with some exceptions), railroad employees, and individuals employed in neighboring states. Analysis includes all employment reported for CRT clients aged 18-64 who were active during each reporting quarter. Quarterly employment rates are lower than annual employment rates because not all clients who are employed during a year are employed during every quarter of the year.

CRT Clients Employed (#) and Average Earnings for Employed Clients (\$)
Third Quarter (Jan-Mar) of Fiscal Years 2007 - 2016

Year	Region																		Total \$				
	Addison		Northwest		Chittenden		Lamoille		Southeast		Northeast		Orange		Rutland		Bennington			Washington		Pathways	
	#	\$	#	\$	#	\$	#	\$	#	\$	#	\$	#	\$	#	\$	#	\$	#	\$	#	\$	
FY16	34	1,725	25	2,529	104	2,858	24	2,355	31	2,151	18	1,916	17	2,294	34	5,273	9	2,031	73	2,152	4	868	2,611
FY15	25	1,658	22	2,974	99	2,425	26	2,180	34	1,879	24	2,066	12	1,363	36	3,565	11	1,701	74	2,273			2,338
FY14	25	1,609	21	2,627	99	2,416	14	2,848	43	2,210	28	1,954	14	2,630	34	3,215	16	1,620	75	2,036			2,301
FY13	20	2,106	20	1,928	105	2,285	14	2,558	39	2,000	25	2,133	11	1,428	33	3,973	13	2,100	73	2,142			2,318
FY12	26	2,392	15	2,487	94	2,449	21	2,392	35	1,577	25	2,295	16	2,051	36	3,353	10	2,731	71	1,863			2,308
FY11	27	2,642	13	2,937	86	2,481	22	2,259	29	1,501	30	2,620	12	2,154	33	3,455	10	1,822	70	1,812			2,348
FY10	29	2,483	18	2,890	95	2,217	25	2,032	25	1,593	31	2,020	16	2,814	37	3,028	11	2,244	76	1,741			2,209
FY09	37	2,437	24	2,454	112	3,016	29	1,749	38	1,817	40	2,236	13	3,509	44	2,709	21	1,517	87	1,759			2,350
FY08	41	2,564	31	2,833	116	2,538	31	2,810	52	1,665	44	2,053	23	3,580	45	3,218	22	2,028	99	1,871			2,397
FY07	35	2,764	38	2,853	123	2,279	30	2,440	39	1,985	57	2,539	31	2,642	43	2,619	27	2,187	90	1,785			2,329

This report is based on analysis of the Vermont Department of Mental Health (DMH) and Department of Labor (DOL) databases, and includes individuals served by Community and Rehabilitation Treatment (CRT) programs for adults with serious mental illness. DMH client data are submitted by Community Programs in conformance with contractual requirements. DOL data are submitted by employers in conformance with state and federal laws. Workers who are excluded from DOL reporting are the self-employed, firm owners not incorporated and the following employee groups: elected officials, employees of nonprofit religious, charitable and educational organizations, unpaid family members, farm workers (with some exceptions), railroad employees, and individuals employed in neighboring states. Analysis includes all employment reported for CRT clients aged 18-64 who were active during each reporting quarter. Quarterly employment rates are lower than annual employment rates because not all clients who are employed during a year are employed during every quarter of the year.

Third Quarter FY2016 Employment in Vermont of Community Rehabilitation and Treatment Clients (January-March 2016)

Region	Total Number Served	Employment		Wages Reported	
		Number Employed	Percent Employed	Total Wages	Wages per Employed Client
Addison	138	34	24.6%	\$58,648	\$1,725
Northwest	180	25	13.9%	\$63,213	\$2,529
Chittenden	519	104	20.0%	\$297,199	\$2,858
Lamoille	102	24	23.5%	\$56,532	\$2,355
Southeast	327	31	9.5%	\$66,695	\$2,151
Northeast	209	18	8.6%	\$34,492	\$1,916
Orange	126	17	13.5%	\$38,992	\$2,294
Rutland	218	34	15.6%	\$179,274	\$5,273
Bennington	121	9	7.4%	\$18,280	\$2,031
Washington	261	73	28.0%	\$157,127	\$2,152
Pathways	40	4	10.0%	\$3,473	\$868
Quarterly Total	2,241	373	16.6%	\$973,925	\$2,611

This report is based on analysis of the Vermont Department of Mental Health (DMH) and Department of Labor (DOL) databases, and includes individuals served by Community and Rehabilitation Treatment (CRT) programs for adults with serious mental illness. DMH client data are submitted by Community Programs in conformance with contractual requirements. DOL data are submitted by employers in conformance with state and federal laws. Workers who are excluded from DOL reporting are the self-employed, firm owners not incorporated and the following employee groups: elected officials, employees of nonprofit religious, charitable and educational organizations, unpaid family members, farm workers (with some exceptions), railroad employees, and individuals employed in neighboring states. Analysis includes all employment reported for CRT clients aged 18-64 who were active during each reporting quarter. Quarterly employment rates are lower than annual employment rates because not all clients who are employed during a year are employed during every quarter of the year.