

Vermont Mental Health Performance Indicator Project

Vermont Agency of Human Services, Department of Mental Health
26 Terrace Street Montpelier Vermont 05609

TO: Vermont Mental Health Performance Indicator Project
Advisory Group and Interested Parties

FROM: Sheila Leno and Emma Harrigan

DATE: August 29, 2014

RE: Employment of CRT Clients: Third Quarters (Jan-Mar) of FY2005-FY2014

This week's PIP provides third quarter employment rates (January through March) of ten fiscal years, FY2005 through FY2014, for clients served by Vermont's Community Rehabilitation and Treatment (CRT) programs for adults with serious mental illness. Previous reports in this series are available online at:
<http://mentalhealth.vermont.gov/report/pip/sector#employment>.

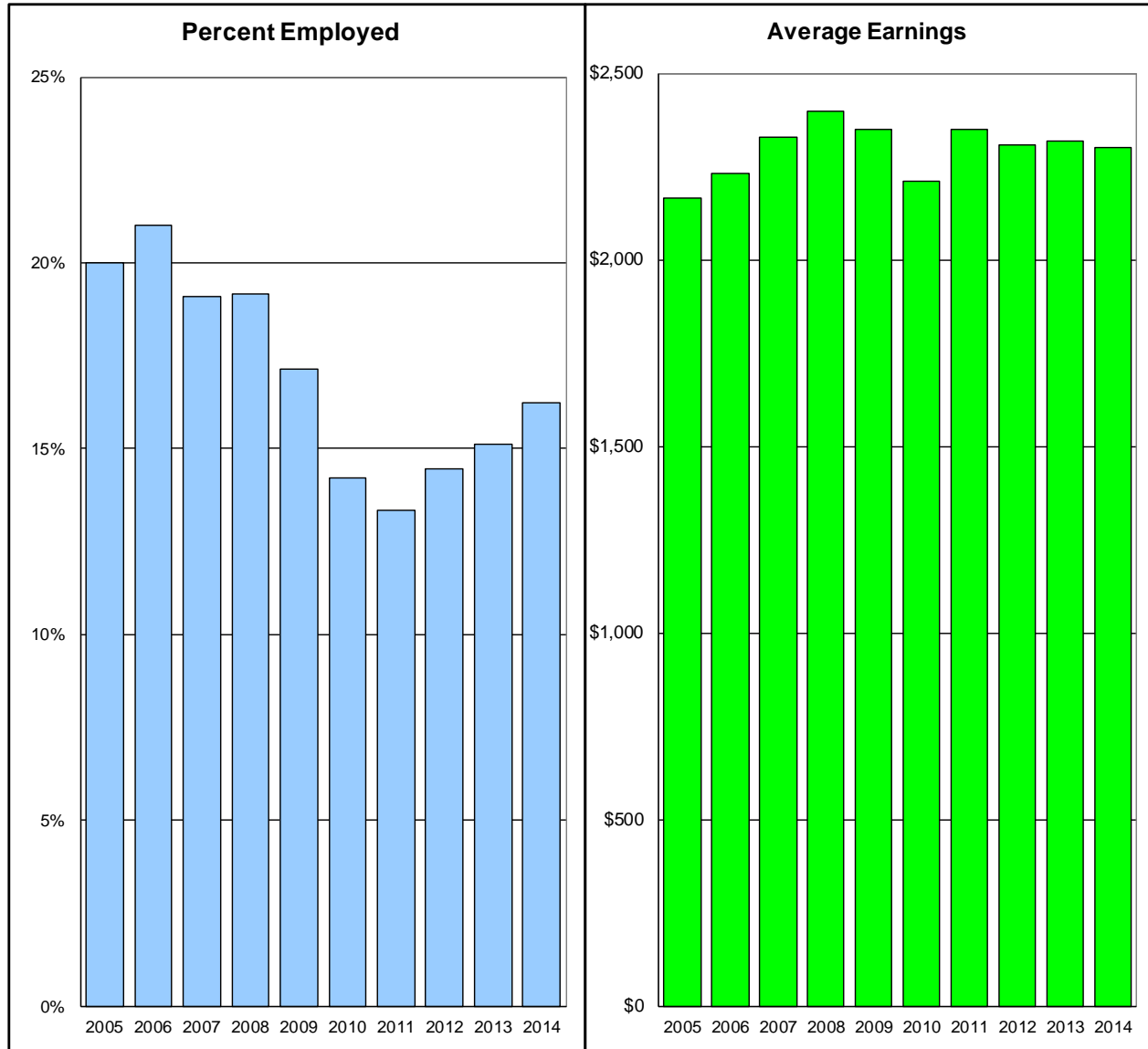
Like previous reports in this series, this report is based on analysis of data submitted to the Vermont Department of Mental Health (DMH) by the ten designated agencies and data obtained from the Vermont Department of Labor (DOL). More detail regarding DOL employment data are provided in each of the attached tables.

During the years covered by this report, statewide third quarter employment rates of CRT clients varied from a high of 21% in FY2006 to a low of 13% in FY2011. During the third quarter of FY2014, Washington (WCMH) and Chittenden (HC) had the highest employment rates (26.5% and 17.7%, respectively), followed by Addison (CSAC) with 17.1%. The lowest employment rates during the third quarter of FY2014 were in Orange (CMC) with 10.9% and Northwest (NCSS) with 11.1%.

Statewide, average third quarter earnings of employed CRT clients during the ten years covered by this report increased from \$2,166 in the third quarter of FY2005 to \$2,397 in FY2008 then down to \$2,301 in FY2014. Rutland (RMHS) had the highest FY2014 third quarter earnings per employed client (\$3,215), followed by Lamoille (LCMH; \$2,848) and Orange (CMC; \$2,630). The lowest FY2014 third quarter earnings were in Addison (CSAC; \$1,609) and Bennington (UCS; \$1,620).

We look forward to your comments and your suggestions for further analyses of these data. As always, you can reach us by e-mail at pip@state.vt.us.

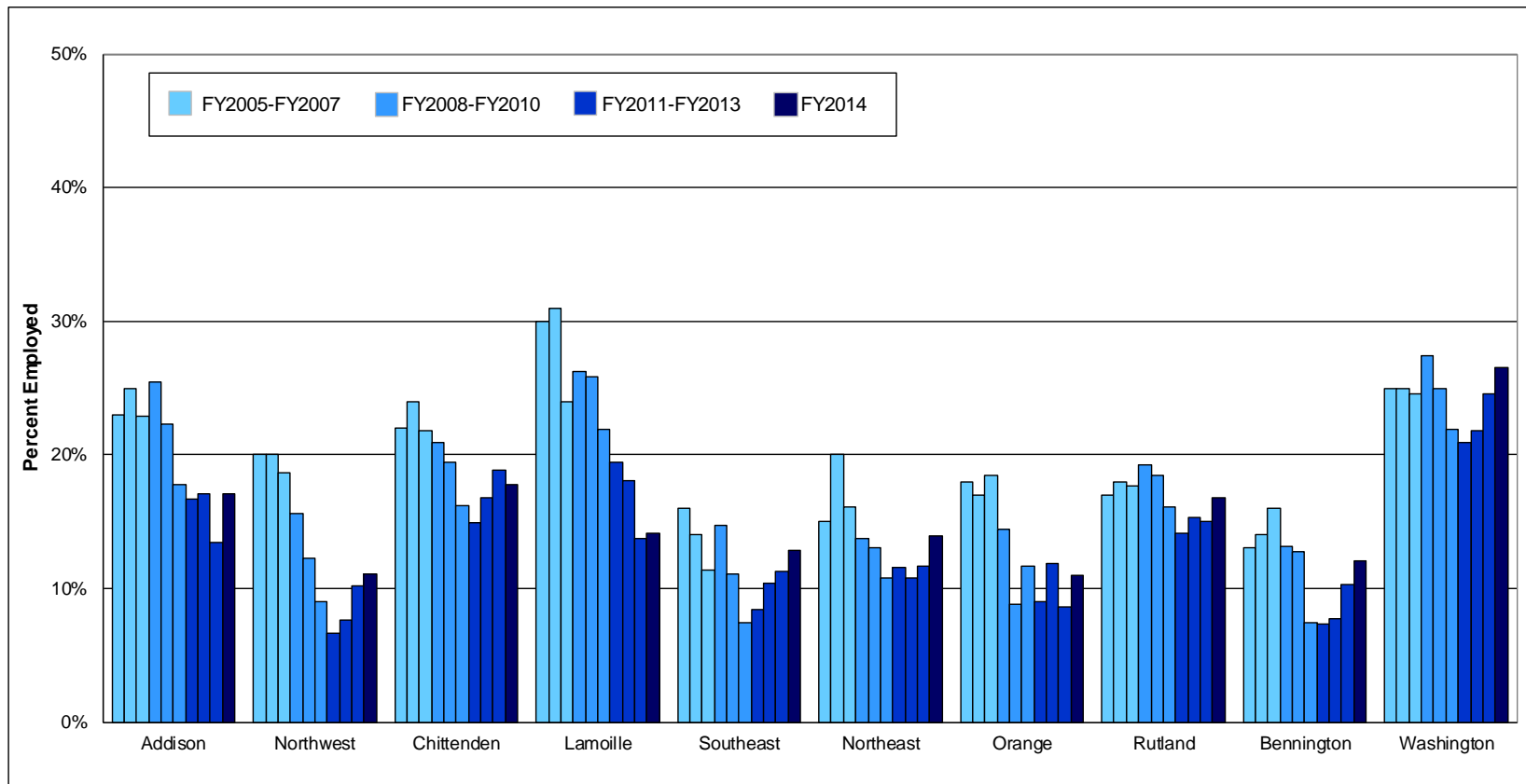
Statewide CRT Employment Rates and Average Earnings Third Quarter (Jan-Mar) of Fiscal Years 2005 - 2014



	Third Quarter of Fiscal Year									
	<u>2005</u>	<u>2006</u>	<u>2007</u>	<u>2008</u>	<u>2009</u>	<u>2010</u>	<u>2011</u>	<u>2012</u>	<u>2013</u>	<u>2014</u>
% Employed	20.0%	21.0%	19.1%	19.2%	17.1%	14.2%	13.3%	14.4%	15.1%	16.2%
\$ / Employed Client	\$2,166	\$2,232	\$2,329	\$2,397	\$2,350	\$2,209	\$2,348	\$2,308	\$2,318	\$2,301

This report is based on analysis of the Vermont Department of Mental Health (DMH) and Department of Labor (DOL) databases, and includes individuals served by Community and Rehabilitation Treatment (CRT) programs for adults with serious mental illness. DMH client data are submitted by Community Programs in conformance with contractual requirements. DOL data are submitted by employers in conformance with state and federal laws. Workers who are excluded from DOL reporting are the self-employed, firm owners not incorporated and the following employee groups: elected officials, employees of nonprofit religious, charitable and educational organizations, unpaid family members, farm workers (with some exceptions), railroad employees, and individuals employed in neighboring states. Analysis includes all employment reported for CRT clients aged 18-64 who were active during each reporting quarter. Quarterly employment rates are lower than annual employment rates because not all clients who are employed during a year are employed during every quarter of the year.

Percent of CRT Clients Employed Third Quarter (Jan-Mar) of Fiscal Years 2005 - 2014



This report is based on analysis of the Vermont Department of Mental Health (DMH) and Department of Labor (DOL) databases, and includes individuals served by Community and Rehabilitation Treatment (CRT) programs for adults with serious mental illness. DMH client data are submitted by Community Programs in conformance with contractual requirements. DOL data are submitted by employers in conformance with state and federal laws. Workers who are excluded from DOL reporting are the self-employed, firm owners not incorporated and the following employee groups: elected officials, employees of nonprofit religious, charitable and educational organizations, unpaid family members, farm workers (with some exceptions), railroad employees, and individuals employed in neighboring states. Analysis includes all employment reported for CRT clients aged 18-64 who were active during each reporting quarter. Quarterly employment rates are lower than annual employment rates because not all clients who are employed during a year are employed during every quarter of the year.

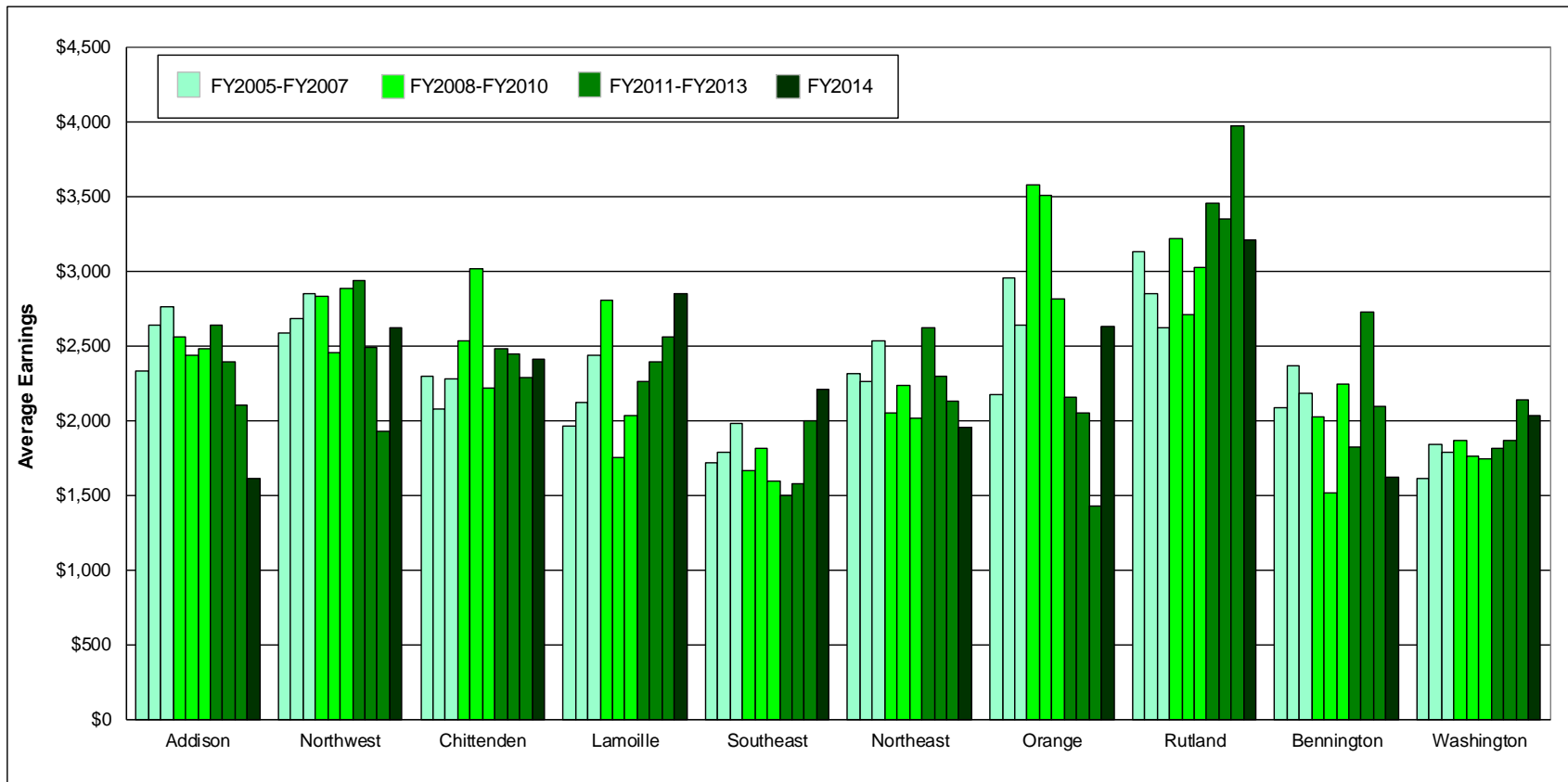
Total CRT Clients Served (#) and Percent Employed (%)
Third Quarter (Jan-Mar) of Fiscal Years 2005 - 2014

Year	Region																		Total %		
	Addison		Northwest		Chittenden		Lamoille		Southeast		Northeast		Orange		Rutland		Bennington			Washington	
	#	%	#	%	#	%	#	%	#	%	#	%	#	%	#	%	#	%	#	%	
FY14	146	17.1	190	11.1	558	17.7	99	14.1	334	12.9	201	13.9	128	10.9	203	16.7	133	12.0	283	26.5	16.2
FY13	149	13.4	196	10.2	557	18.9	102	13.7	346	11.3	214	11.7	127	8.7	220	15.0	126	10.3	297	24.6	15.1
FY12	152	17.1	196	7.7	560	16.8	116	18.1	338	10.4	231	10.8	135	11.9	235	15.3	129	7.8	325	21.8	14.4
FY11	162	16.7	197	6.6	576	14.9	113	19.5	343	8.5	260	11.5	133	9.0	233	14.2	137	7.3	335	20.9	13.3
FY10	163	17.8	200	9.0	587	16.2	114	21.9	338	7.4	288	10.8	137	11.7	230	16.1	148	7.4	347	21.9	14.2
FY09	166	22.3	196	12.2	575	19.5	112	25.9	343	11.1	306	13.1	148	8.8	238	18.5	165	12.7	348	25.0	17.1
FY08	161	25.5	199	15.6	555	20.9	118	26.3	354	14.7	321	13.7	159	14.5	234	19.2	167	13.2	361	27.4	19.2
FY07	153	22.9	204	18.6	564	21.8	125	24.0	343	11.4	353	16.1	168	18.5	243	17.7	169	16.0	367	24.5	19.1
FY06	150	25.0	196	20.0	578	24.0	133	31.0	352	14.0	373	20.0	160	17.0	244	18.0	159	14.0	376	25.0	21.0
FY05	154	23.0	201	20.0	563	22.0	134	30.0	351	16.0	369	15.0	150	18.0	245	17.0	164	13.0	392	25.0	20.0

This report is based on analysis of the Vermont Department of Mental Health (DMH) and Department of Labor (DOL) databases, and includes individuals served by Community and Rehabilitation Treatment (CRT) programs for adults with serious mental illness. DMH client data are submitted by Community Programs in conformance with contractual requirements. DOL data are submitted by employers in conformance with state and federal laws. Workers who are excluded from DOL reporting are the self-employed, firm owners not incorporated and the following employee groups: elected officials, employees of nonprofit religious, charitable and educational organizations, unpaid family members, farm workers (with some exceptions), railroad employees, and individuals employed in neighboring states. Analysis includes all employment reported for CRT clients aged 18-64 who were active during each reporting quarter. Quarterly employment rates are lower than annual employment rates because not all clients who are employed during a year are employed during every quarter of the year.

Average Earnings for Employed CRT Clients

Third Quarter (Jan-Mar) of Fiscal Years 2005 - 2014



This report is based on analysis of the Vermont Department of Mental Health (DMH) and Department of Labor (DOL) databases, and includes individuals served by Community and Rehabilitation Treatment (CRT) programs for adults with serious mental illness. DMH client data are submitted by Community Programs in conformance with contractual requirements. DOL data are submitted by employers in conformance with state and federal laws. Workers who are excluded from DOL reporting are the self-employed, firm owners not incorporated and the following employee groups: elected officials, employees of nonprofit religious, charitable and educational organizations, unpaid family members, farm workers (with some exceptions), railroad employees, and individuals employed in neighboring states. Analysis includes all employment reported for CRT clients aged 18-64 who were active during each reporting quarter. Quarterly employment rates are lower than annual employment rates because not all clients who are employed during a year are employed during every quarter of the year.

CRT Clients Employed (#) and Average Earnings for Employed Clients (\$)
Third Quarter (Jan-Mar) of Fiscal Years 2005 - 2014

Year	Region																Total \$				
	Addison		Northwest		Chittenden		Lamoille		Southeast		Northeast		Orange		Rutland			Bennington		Washington	
	#	\$	#	\$	#	\$	#	\$	#	\$	#	\$	#	\$	#	\$	#	\$	#	\$	
FY14	25	1,609	21	2,627	99	2,416	14	2,848	43	2,210	28	1,954	14	2,630	34	3,215	16	1,620	75	2,036	2,301
FY13	20	2,106	20	1,928	105	2,285	14	2,558	39	2,000	25	2,133	11	1,428	33	3,973	13	2,100	73	2,142	2,318
FY12	26	2,392	15	2,487	94	2,449	21	2,392	35	1,577	25	2,295	16	2,051	36	3,353	10	2,731	71	1,863	2,308
FY11	27	2,642	13	2,937	86	2,481	22	2,259	29	1,501	30	2,620	12	2,154	33	3,455	10	1,822	70	1,812	2,348
FY10	29	2,483	18	2,890	95	2,217	25	2,032	25	1,593	31	2,020	16	2,814	37	3,028	11	2,244	76	1,741	2,209
FY09	37	2,437	24	2,454	112	3,016	29	1,749	38	1,817	40	2,236	13	3,509	44	2,709	21	1,517	87	1,759	2,350
FY08	41	2,564	31	2,833	116	2,538	31	2,810	52	1,665	44	2,053	23	3,580	45	3,218	22	2,028	99	1,871	2,397
FY07	35	2,764	38	2,853	123	2,279	30	2,440	39	1,985	57	2,539	31	2,642	43	2,619	27	2,187	90	1,785	2,329
FY06	37	2,637	40	2,684	139	2,081	41	2,119	49	1,788	73	2,262	27	2,954	43	2,850	23	2,369	95	1,840	2,232
FY05	36	2,330	41	2,585	122	2,298	40	1,960	55	1,722	56	2,315	27	2,178	42	3,134	21	2,084	98	1,615	2,166

This report is based on analysis of the Vermont Department of Mental Health (DMH) and Department of Labor (DOL) databases, and includes individuals served by Community and Rehabilitation Treatment (CRT) programs for adults with serious mental illness. DMH client data are submitted by Community Programs in conformance with contractual requirements. DOL data are submitted by employers in conformance with state and federal laws. Workers who are excluded from DOL reporting are the self-employed, firm owners not incorporated and the following employee groups: elected officials, employees of nonprofit religious, charitable and educational organizations, unpaid family members, farm workers (with some exceptions), railroad employees, and individuals employed in neighboring states. Analysis includes all employment reported for CRT clients aged 18-64 who were active during each reporting quarter. Quarterly employment rates are lower than annual employment rates because not all clients who are employed during a year are employed during every quarter of the year.

Third Quarter FY2014 Employment in Vermont of Community Rehabilitation and Treatment Clients (January-March 2014)

Region	Total Number Served	Employment		Wages Reported		
		Number Employed	Percent Employed	Total Wages	Wages per Employed Client	Wages per Client Served
Addison	146	25	17.1%	\$40,214	\$1,609	\$275
Northwest	190	21	11.1%	\$55,177	\$2,627	\$290
Chittenden	558	99	17.7%	\$239,222	\$2,416	\$429
Lamoille	99	14	14.1%	\$39,876	\$2,848	\$403
Southeast	334	43	12.9%	\$95,025	\$2,210	\$285
Northeast	201	28	13.9%	\$54,717	\$1,954	\$272
Orange	128	14	10.9%	\$36,818	\$2,630	\$288
Rutland	203	34	16.7%	\$109,300	\$3,215	\$538
Bennington	133	16	12.0%	\$25,923	\$1,620	\$195
Washington	283	75	26.5%	\$152,675	\$2,036	\$539
Quarterly Total	2,275	369	16.2%	\$848,946	\$2,301	\$373

This report is based on analysis of the Vermont Department of Mental Health (DMH) and Department of Labor (DOL) databases, and includes individuals served by Community and Rehabilitation Treatment (CRT) programs for adults with serious mental illness. DMH client data are submitted by Community Programs in conformance with contractual requirements. DOL data are submitted by employers in conformance with state and federal laws. Workers who are excluded from DOL reporting are the self-employed, firm owners not incorporated and the following employee groups: elected officials, employees of nonprofit religious, charitable and educational organizations, unpaid family members, farm workers (with some exceptions), railroad employees, and individuals employed in neighboring states. Analysis includes all employment reported for CRT clients aged 18-64 who were active during each reporting quarter. Quarterly employment rates are lower than annual employment rates because not all clients who are employed during a year are employed during every quarter of the year.