

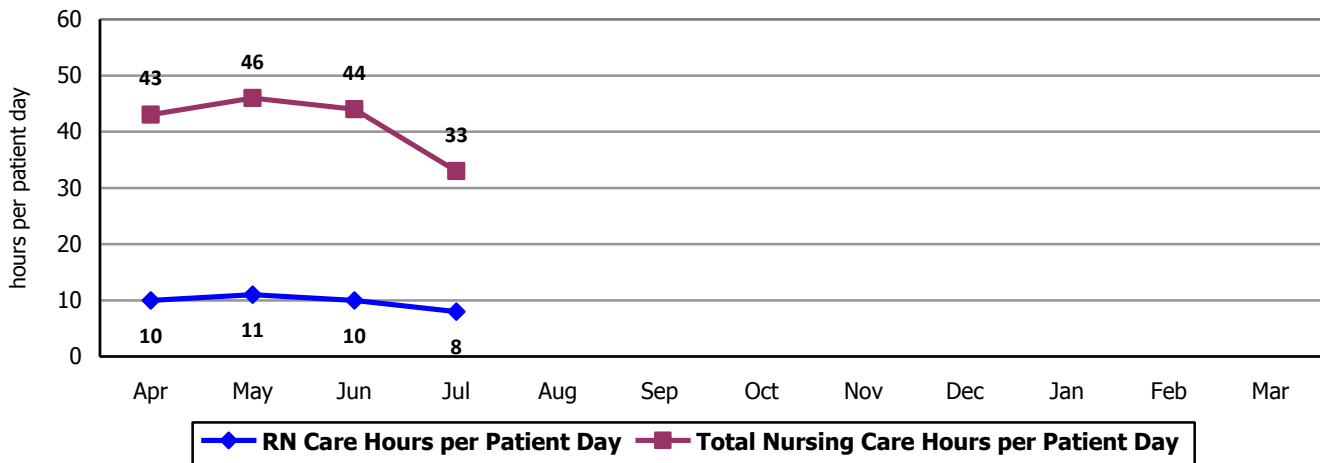
2015 Hospital Report Card Nurse Staffing Data
Vermont Psychiatric Care Hospital

VERMONT PSYCHIATRIC CARE HOSPITAL - MORRISVILLE UNIT

This 8 bed state inpatient psychiatric hospital, a secure facility providing acute care for involuntarily hospitalized adults diagnosed with a psychiatric disorder, opened in January 2013 at an interim location in Morrisville. The interim hospital was initially called Green Mountain Psychiatric Care Hospital. In April 2014, the Green Mountain Psychiatric Care Hospital adopted the permanent name chosen by the Vermont legislature, the Vermont Psychiatric Care Hospital. The Morrisville hospital operated until July 2, 2014, when all patients and employees moved to the new facility in Berlin.

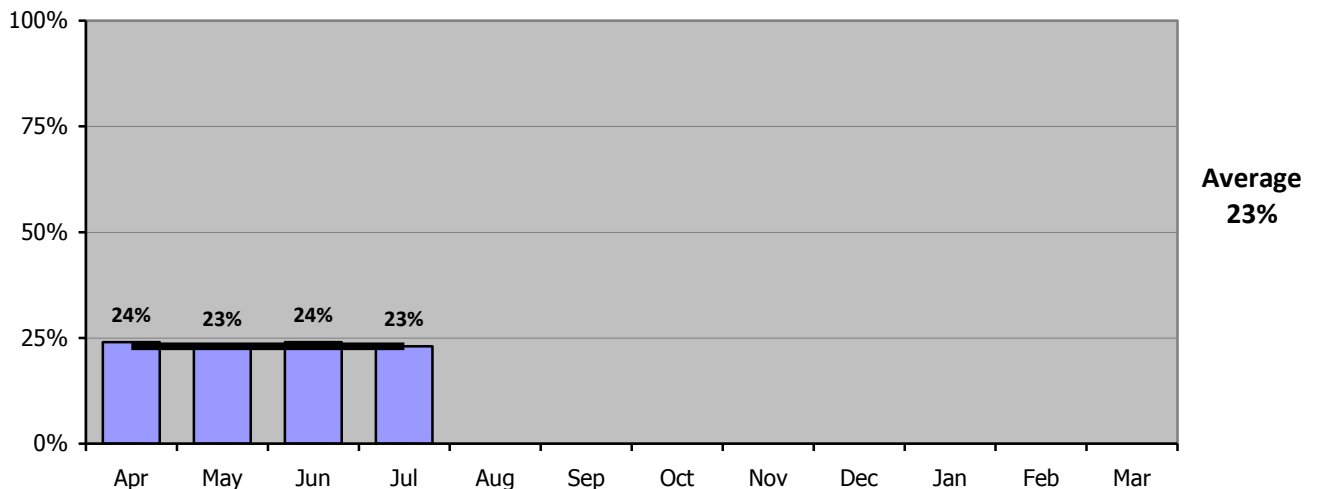
Nursing Care Hours per Patient Day: April 2014 - March 2015

The following graph shows the average number of direct nursing care hours provided per patient during a 24-hour period. Results are shown for each month, for care provided by registered nurses and by all nursing staff.



Percent of Total Nursing Care Hours Provided by RNs: April 2014 - March 2015

The following graph shows the percentage of total nursing hours provided by registered nurses, including the average for this unit.



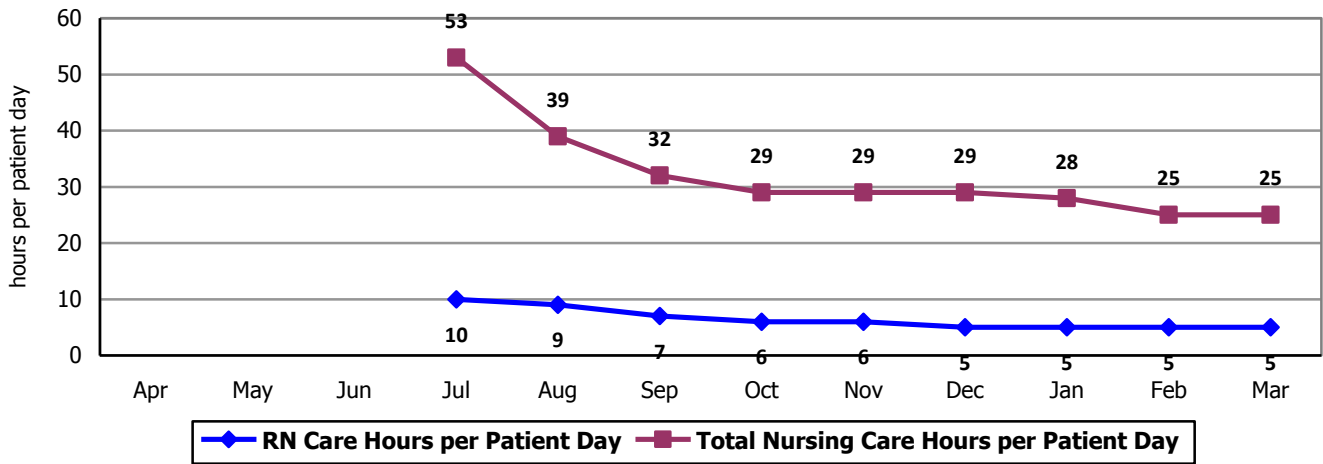
2015 Hospital Report Card Nurse Staffing Data
Vermont Psychiatric Care Hospital

VERMONT PSYCHIATRIC CARE HOSPITAL – BERLIN

The new 25 bed state psychiatric hospital, a secure facility providing acute care for involuntarily hospitalized adults diagnosed with a psychiatric disorder, opened with the patients previously hospitalized in Morrisville, on July 2, 2014. The patient census was gradually increased to full capacity during the following months, as employees became familiar with the new physical environment in order to provide safe and effective care.

Nursing Care Hours per Patient Day: April 2014 - March 2015

The following graph shows the average number of direct nursing care hours provided per patient during a 24-hour period. Results are shown for each month, for care provided by registered nurses and by all nursing staff.



Percent of Total Nursing Care Hours Provided by RNs: April 2014 - March 2015

The following graph shows the percentage of total nursing hours provided by registered nurses, including the average for this unit.

