

Vermont Mental Health Performance Indicator Project

Vermont Agency of Human Services, Department of Mental Health
26 Terrace Street, Montpelier, Vermont 05609

TO: Vermont Mental Health Performance Indicator Project
Advisory Group and Interested Parties

FROM: Sheila Leno

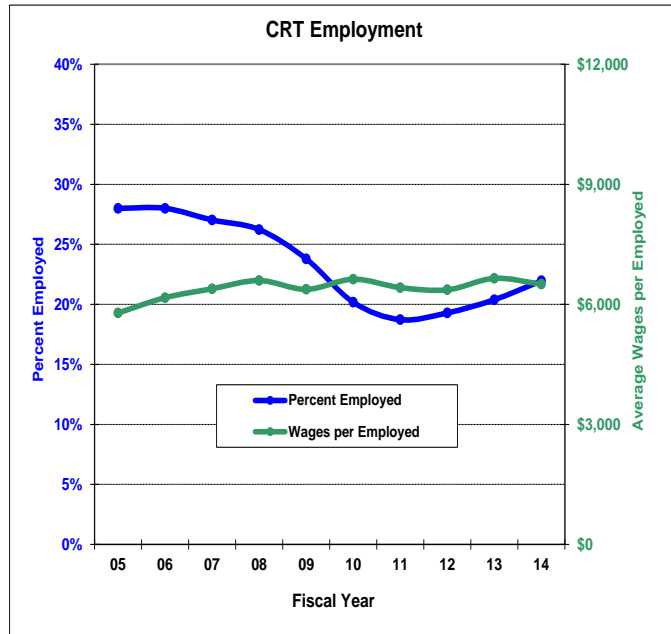
DATE: March 13, 2015

RE: Employment of CRT Clients from FY2005 through FY2014

This week's report continues our series that examines employment rates for adults with serious mental illness served by Vermont's Community Rehabilitation and Treatment (CRT) programs. This report is based on analysis of data from DMH designated agencies and the Vermont Department of Labor (DOL). Previous reports in this series are available online at: <http://mentalhealth.vermont.gov/report/pip/sector#employment>.

This report provides employment rates and average wages for each of the state's CRT programs for the past **ten fiscal years**. Details of CRT employment and wages earned for each quarter of FY2005 through FY2014 are attached. Rates of employment are based on employment reported to the Vermont Department of Labor (see footnotes).

During FY2014, 22% of Vermont CRT clients were employed at some point during the year. This is slightly higher than the rate in FY2013. During FY2014, Washington (WCMH) and Chittenden (HC) had the highest employment rates (32% and 26% respectively), while Northwest (NCSS) had the lowest employment rate (14%).

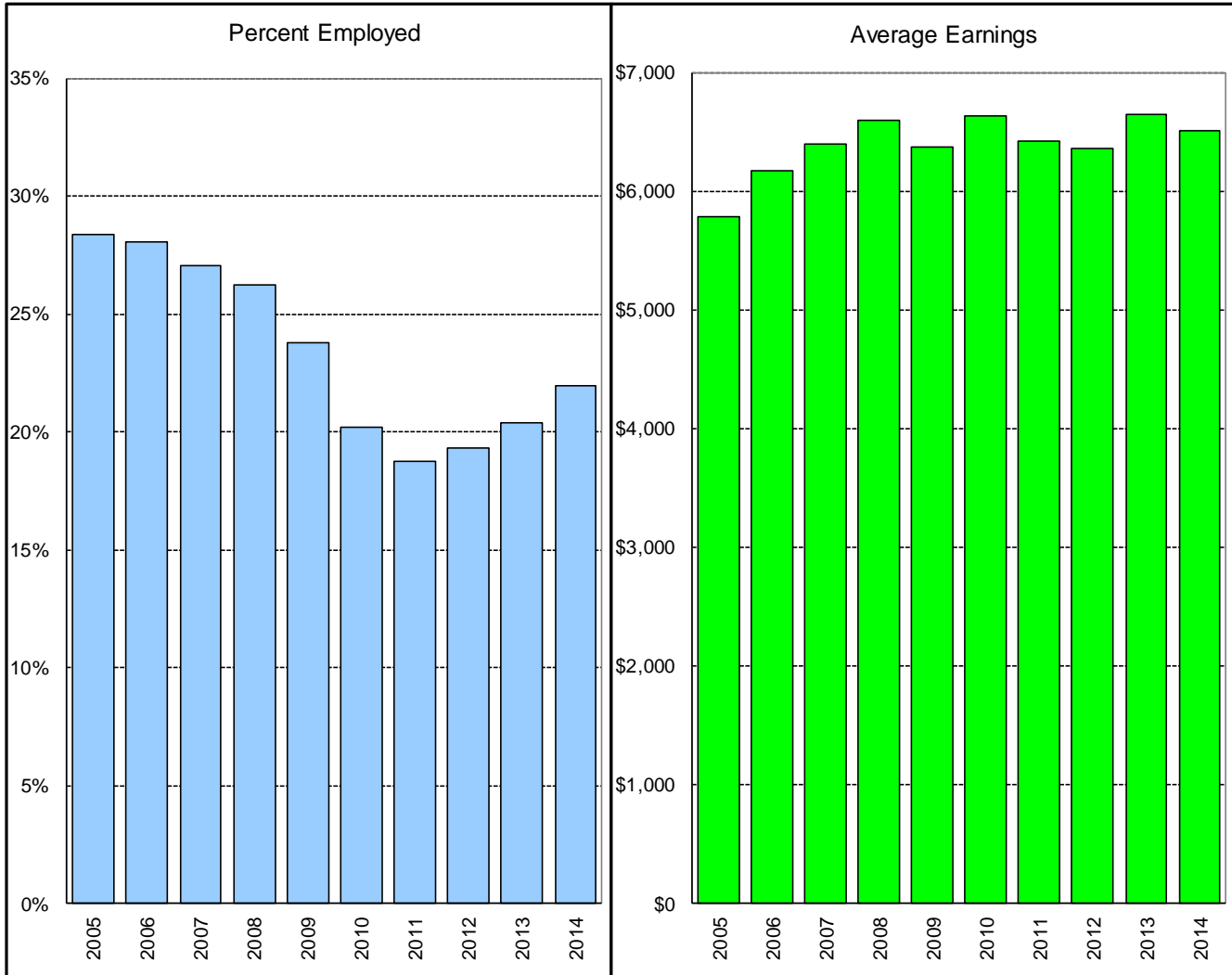


FY2014 average wages per employed client decreased from FY2013. During FY2014, Rutland (RMHS) had the highest annual wages per employed client (\$9,994), while Northeast (NKHS) had the lowest annual wages per employed client (\$4,530). Wages per employed client increased from FY2013 in three of the ten CRT programs. Orange (CMC) experienced the largest increase (76%). Northeast (NKHS) experienced a 22% decrease in annual wages per employed client, from \$5,788 in FY2013 to \$4,530 in FY2014.

We look forward to your comments and suggestions for further analyses of these data. As always, you can reach us by e-mail at pip@state.vt.us.

CRT Annual Employment Rates and Average Earnings

Vermont: Fiscal Years 2005 - 2014



	Fiscal Year									
	<u>2005</u>	<u>2006</u>	<u>2007</u>	<u>2008</u>	<u>2009</u>	<u>2010</u>	<u>2011</u>	<u>2012</u>	<u>2013</u>	<u>2014</u>
% Employed	28%	28%	27%	26%	24%	20%	19%	19%	20%	22%
\$ / Employed Client	\$5,785	\$6,166	\$6,389	\$6,596	\$6,374	\$6,628	\$6,418	\$6,363	\$6,650	\$6,506

Analysis includes Community Rehabilitation and Treatment (CRT) clients aged 18 - 64 who were active during any part of the reporting period and includes all employment reported for the reporting period.

This report is based on analysis of the DMH CRT and DOL databases. DMH client data are submitted by designated agencies in conformance with contractual requirements. DOL data are submitted by employers in conformance with state and federal laws. Workers who are excluded from DOL reporting are the self-employed, firm owners not incorporated and the following employee groups: elected officials, employees of nonprofit religious, charitable and educational organizations, unpaid family members, farm workers (with some exceptions), railroad employees, and individuals who work out of state.

CRT Annual Employment and Average Wages Earned In Vermont

	Total Number Served	Employment		Wages Reported	
		Number Employed	Percent Employed	Total Wages	Wages per Employed Client
FY2005	2,977	844	28%	\$4,882,307	\$5,785
FY2006	2,943	826	28%	\$5,093,292	\$6,166
FY2007	2,971	803	27%	\$5,130,765	\$6,389
FY2008	2,928	768	26%	\$5,065,598	\$6,596
FY2009	2,850	678	24%	\$4,321,767	\$6,374
FY2010	2,736	552	20%	\$3,658,589	\$6,628
FY2011	2,756	516	19%	\$3,311,628	\$6,418
FY2012	2,701	521	19%	\$3,315,031	\$6,363
FY2013	2,580	526	20%	\$3,497,779	\$6,650
FY2014	2,496	548	22%	\$3,565,033	\$6,506

Analysis includes Community Rehabilitation and Treatment clients aged 18 - 64 who were active during any part of the reporting period and includes all employment reported for the reporting period.

This report is based on analysis of the Department of Mental Health (DMH) and the Department of Labor (DOL) databases. DMH client data are submitted by Community Rehabilitation and Treatment Programs in conformance with contractual requirements. DOL data are submitted by employers in conformance with state and federal unemployment laws. Workers who are excluded from DOL reporting are the self-employed, firm owners not incorporated and the following employee groups: elected officials, employees of nonprofit religious, charitable and educational organizations, unpaid family members, farm workers (with some exceptions), railroad employees, and individuals who work out of state.

CRT Annual Employment and Average Wages Earned by Clinic

Percent of Clients Employed

	<u>FY05</u>	<u>FY06</u>	<u>FY07</u>	<u>FY08</u>	<u>FY09</u>	<u>FY10</u>	<u>FY11</u>	<u>FY12</u>	<u>FY13</u>	<u>FY14</u>
CSAC	30.9%	31.3%	28.7%	33.0%	26.7%	25.7%	22.4%	23.2%	21.1%	22.5%
NCSS	32.6%	29.6%	27.1%	25.1%	18.3%	13.1%	12.4%	16.8%	18.2%	14.5%
HC	34.5%	33.8%	29.6%	29.5%	27.6%	24.2%	21.8%	24.2%	23.8%	25.6%
LCMH	38.7%	35.7%	33.1%	35.2%	35.2%	28.9%	27.0%	25.0%	22.2%	21.2%
HCRS	20.4%	20.2%	19.9%	20.2%	17.9%	11.7%	11.8%	12.0%	17.3%	18.8%
NKHS	23.4%	24.4%	24.9%	20.9%	18.7%	15.8%	15.5%	16.1%	15.5%	20.2%
CMC	25.4%	29.0%	23.3%	21.0%	14.7%	13.3%	13.0%	12.9%	16.2%	14.7%
RMHS	24.1%	24.8%	25.4%	25.0%	23.7%	20.6%	19.4%	18.7%	18.8%	19.8%
UCS	20.6%	20.5%	22.5%	17.9%	15.7%	13.0%	10.3%	9.8%	13.1%	17.0%
WCMH	31.3%	30.5%	33.9%	33.0%	33.9%	29.9%	27.7%	25.7%	28.1%	32.2%
Overall	28.4%	28.1%	27.0%	26.2%	23.8%	20.2%	18.7%	19.3%	20.4%	22.0%

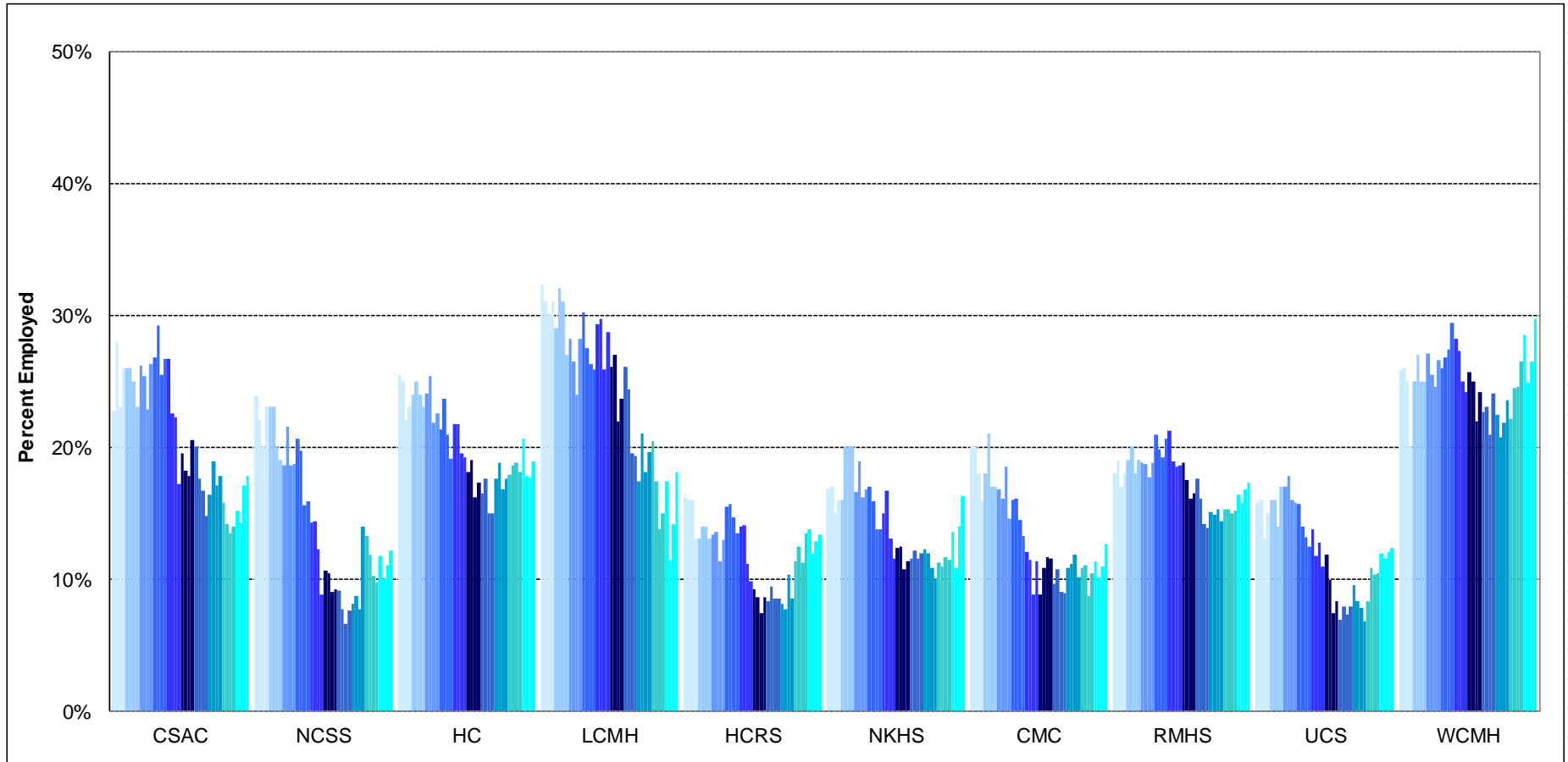
Wages per Employed Client

	<u>FY05</u>	<u>FY06</u>	<u>FY07</u>	<u>FY08</u>	<u>FY09</u>	<u>FY10</u>	<u>FY11</u>	<u>FY12</u>	<u>FY13</u>	<u>FY14</u>
CSAC	\$7,061	\$7,941	\$8,517	\$7,902	\$8,378	\$7,427	\$7,856	\$7,037	\$5,866	\$5,660
NCSS	\$6,221	\$6,910	\$7,293	\$7,583	\$7,027	\$7,990	\$5,839	\$4,634	\$4,686	\$7,400
HC	\$5,341	\$5,479	\$6,514	\$6,257	\$6,938	\$6,634	\$6,249	\$6,223	\$7,152	\$6,962
LCMH	\$5,948	\$6,478	\$6,976	\$7,936	\$4,775	\$6,862	\$6,511	\$6,710	\$6,161	\$6,220
HCRS	\$5,375	\$4,723	\$4,262	\$4,349	\$4,353	\$4,496	\$4,415	\$4,278	\$6,085	\$5,333
NKHS	\$6,098	\$6,694	\$5,840	\$6,211	\$6,082	\$5,792	\$6,956	\$5,363	\$5,788	\$4,530
CMC	\$6,292	\$6,957	\$8,611	\$8,846	\$8,107	\$7,487	\$6,451	\$6,213	\$3,209	\$5,652
RMHS	\$7,678	\$7,452	\$8,298	\$8,988	\$8,798	\$9,868	\$9,580	\$10,299	\$10,507	\$9,994
UCS	\$5,370	\$6,391	\$5,904	\$5,789	\$4,803	\$5,850	\$5,259	\$7,977	\$5,901	\$5,466
WCMH	\$4,740	\$5,521	\$4,955	\$5,532	\$5,262	\$5,554	\$5,445	\$6,143	\$6,994	\$6,457
Overall	\$5,785	\$6,166	\$6,389	\$6,596	\$6,374	\$6,628	\$6,418	\$6,363	\$6,650	\$6,506

Analysis includes Community Rehabilitation and Treatment clients aged 18 - 64 who were active during any part of the reporting period and includes all employment reported for the reporting period.

This report is based on analysis of the DMH CRT and DOL databases. DMH client data are submitted by designated agencies in conformance with contractual requirements. DOL data are submitted by employers in conformance with state and federal laws. Workers who are excluded from DOL reporting are the self-employed, firm owners not incorporated and the following employee groups: elected officials, employees of nonprofit religious, charitable and educational organizations, unpaid family members, farm workers (with some exceptions), railroad employees, and individuals who work out of state.

CRT Clients Employed By Quarter of Each Fiscal Year 2005 - 2014



Analysis includes Community Rehabilitation and Treatment (CRT) clients aged 18 - 64 who were active during each reporting quarter and includes all employment reported for each quarter. Quarterly employment rates are lower than annual employment rates because not all clients who are employed during a year are employed during every quarter of the year.

This report is based on analysis of the VT Department of Mental Health (DMH) and Department of Labor (DOL) databases. DMH client data are submitted by designated agencies in conformance with contractual requirements. DOL data are submitted by employers in conformance with state and federal laws. Workers who are excluded from DOL reporting are the self-employed, firm owners not incorporated and the following employee groups: elected officials, employees of nonprofit religious, charitable and educational organizations, unpaid family members, farm workers (with some exceptions), railroad employees, and individuals who work out of state.

**Total CRT Clients Served (#) and Percent Employed (%)
By Quarter: FY2005 - FY2014**

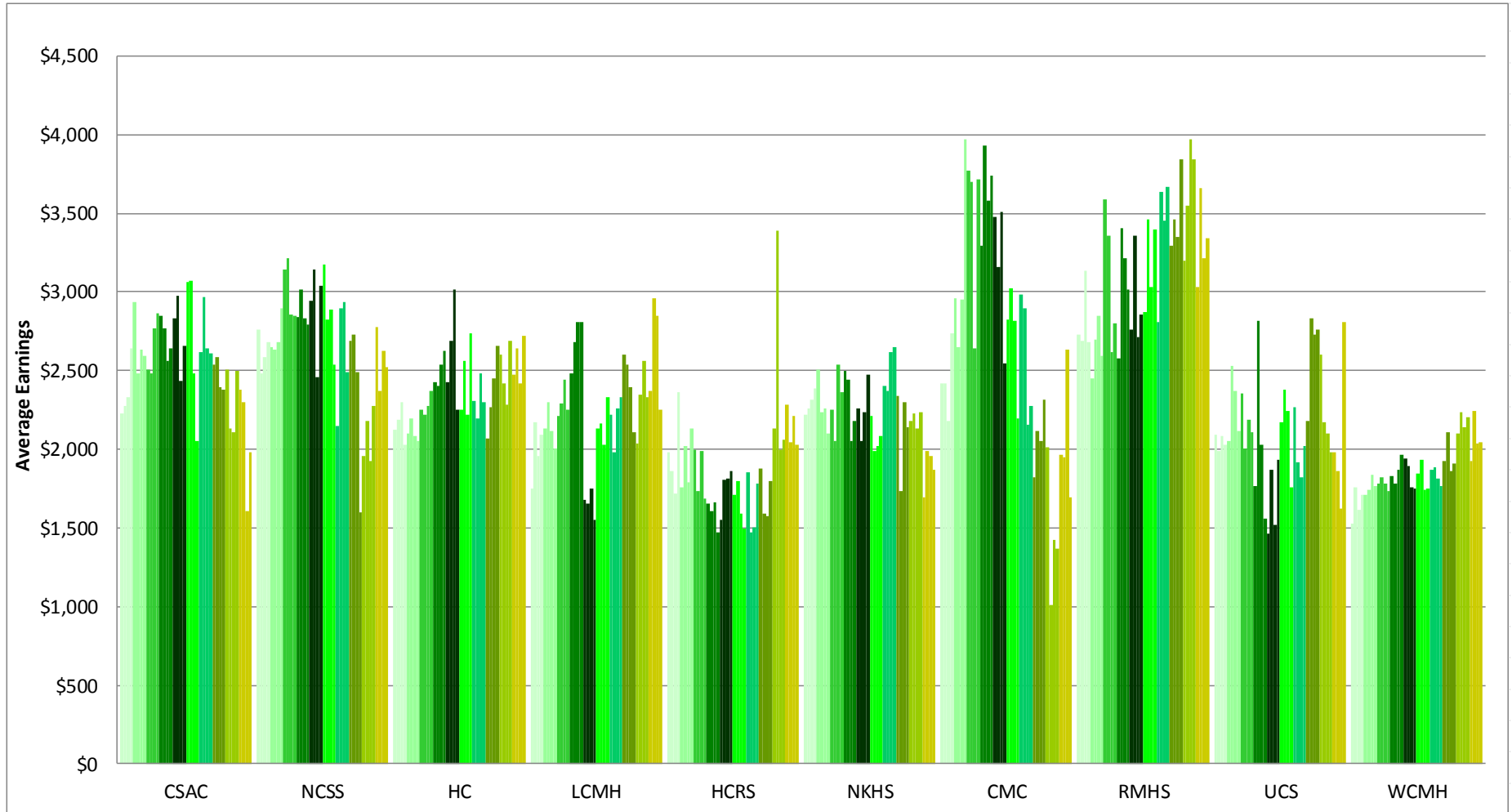
Clinic

Year	QRT	CSAC		NCSS		HC		LCMH		HCRS		NKHS		CMC		RMHS		UCS		WCMH		Total %
		#	%	#	%	#	%	#	%	#	%	#	%	#	%	#	%	#	%	#	%	
FY2005	1	150	23	209	24	556	26	127	32	351	16	357	17	159	20	256	18	165	16	403	26	22
FY2005	2	148	28	205	22	563	25	131	31	353	16	361	17	158	20	255	19	164	16	397	26	22
FY2005	3	154	23	201	20	563	22	134	30	351	16	369	15	150	18	245	17	164	13	392	25	20
FY2005	4	148	26	202	23	556	23	134	31	343	13	373	16	153	16	245	18	162	15	394	20	20
FY2006	1	149	26	203	23	558	24	129	29	345	13	366	16	154	18	243	19	161	16	386	25	21
FY2006	2	148	26	199	23	567	25	128	32	349	14	367	20	155	21	242	20	159	16	386	27	22
FY2006	3	150	25	196	20	578	24	133	31	352	14	373	20	160	17	244	18	159	14	376	25	21
FY2006	4	147	23	195	19	570	23	131	27	347	13	371	20	157	17	246	19	161	17	375	25	20
FY2007	1	149	26	199	19	566	24	131	28	345	13	362	17	155	17	245	19	165	17	376	27	21
FY2007	2	154	25	200	22	567	25	132	27	354	14	359	19	162	16	251	19	169	18	377	25	21
FY2007	3	153	23	204	19	564	22	125	24	343	11	353	16	168	18	243	18	169	16	367	25	19
FY2007	4	156	26	209	19	560	23	124	28	347	13	327	17	158	15	245	19	171	16	361	27	20
FY2008	1	164	27	208	21	562	21	119	30	342	15	329	17	163	16	239	21	172	16	373	26	21
FY2008	2	161	29	203	20	557	24	120	28	350	16	328	16	162	16	237	20	172	14	374	27	21
FY2008	3	161	25	199	16	555	21	118	26	354	15	321	14	159	14	234	19	167	13	361	27	19
FY2008	4	161	27	195	16	571	19	116	26	341	13	319	14	151	13	228	21	161	12	347	29	19
FY2009	1	161	27	197	14	581	22	109	29	343	14	315	15	150	12	231	21	160	14	341	28	20
FY2009	2	164	23	195	14	576	22	111	30	342	14	311	17	149	11	233	19	162	12	341	27	19
FY2009	3	166	22	196	12	575	19	112	26	343	11	306	13	148	9	238	18	165	13	348	25	17
FY2009	4	157	17	194	9	574	19	115	29	338	10	304	12	141	11	236	19	165	11	348	24	16
FY2010	1	159	19	197	11	581	18	115	26	335	9	301	12	136	9	229	19	161	12	351	26	16
FY2010	2	165	18	201	10	584	19	111	27	337	9	298	12	139	11	229	17	152	10	349	25	16
FY2010	3	163	18	200	9	587	16	114	22	338	7	288	11	137	12	230	16	148	7	347	22	14
FY2010	4	161	20	196	9	573	17	110	24	325	9	274	11	130	12	230	17	145	8	344	24	15
FY2011	1	165	20	197	9	569	17	111	26	337	8	277	12	145	10	233	18	145	7	344	23	15
FY2011	2	165	18	196	8	574	18	111	24	339	9	271	12	131	11	230	16	139	8	334	23	15
FY2011	3	162	17	197	7	576	15	113	19	343	8	260	12	133	9	233	14	137	7	335	21	13
FY2011	4	163	15	198	8	574	15	119	19	341	9	251	12	135	9	245	14	139	8	337	24	14
FY2012	1	159	16	198	8	579	18	121	17	345	8	245	12	139	11	245	15	136	10	338	22	15
FY2012	2	153	19	196	9	563	19	119	21	336	8	235	12	135	11	235	15	133	8	328	21	15
FY2012	3	152	17	196	8	560	17	116	18	338	10	231	11	135	12	235	15	129	8	325	22	14
FY2012	4	152	18	200	14	552	18	112	20	343	8	229	10	138	10	237	14	132	7	318	24	15
FY2013	1	152	16	196	13	559	18	108	20	343	11	213	11	139	11	235	15	133	8	312	22	15
FY2013	2	148	14	195	12	554	19	109	17	347	12	210	11	136	11	223	15	129	11	298	24	16
FY2013	3	149	13	196	10	557	19	102	14	346	11	214	12	127	9	220	15	126	10	297	25	15
FY2013	4	151	14	196	10	563	18	100	15	343	13	202	11	134	10	218	15	125	10	295	26	16
FY2014	1	145	15	196	12	562	21	98	17	334	14	199	14	132	11	207	16	126	12	291	29	17
FY2014	2	147	14	190	10	561	18	96	11	344	12	204	11	129	10	203	16	130	12	286	25	15
FY2014	3	146	17	190	11	558	18	99	14	334	13	201	14	128	11	203	17	133	12	283	27	16
FY2014	4	146	18	190	12	562	19	105	18	330	13	196	16	127	13	208	17	138	12	276	30	18

Analysis includes Community Rehabilitation and Treatment (CRT) clients aged 18- 64 who were active during each reporting quarter and includes all employment reported for each quarter. Quarterly employment rates are lower than annual employment rates because not all clients who are employed during a year are employed during every quarter of the year.

This report is based on analysis of the VT Department of Mental Health (DMH) and Department of Labor (DOL) databases. DMH client data are submitted by designated agencies in conformance with contractual requirements. DOL data are submitted by employers in conformance with state and federal laws. Workers who are excluded from DOL reporting are the self-employed, firm owners not incorporated and the following employee groups: elected officials, employees of nonprofit religious, charitable and educational organizations, unpaid family members, farm workers (with some exceptions), railroad employees, and individuals who work out of state.

Average Earnings for Employed CRT Clients By Quarter of Each Fiscal Year 2005 - 2014



Analysis includes Community Rehabilitation and Treatment (CRT) clients aged 18 - 64 who were active during each reporting quarter and includes all employment reported for each quarter. Quarterly employment rates are lower than annual employment rates because not all clients who are employed during a year are employed during every quarter of the year.

This report is based on analysis of the VT Department of Mental Health (DMH) and Department of Labor (DOL) databases. DMH client data are submitted by designated agencies in conformance with contractual requirements. DOL data are submitted by employers in conformance with state and federal laws. Workers who are excluded from DOL reporting are the self-employed, firm owners not incorporated and the following employee groups: elected officials, employees of nonprofit religious, charitable and educational organizations, unpaid family members, farm workers (with some exceptions), railroad employees, and individuals who work out of state.

**CRT Clients Employed (#) and Average Earnings for Employed Clients (\$)
By Quarter: FY2005 - FY2014**

Clinic

Year	QRT	CSAC		NCSS		HC		LCMH		HCRS		NKHS		CMC		RMHS		UCS		WCMH		Total \$
		#	\$	#	\$	#	\$	#	\$	#	\$	#	\$	#	\$	#	\$	#	\$	#	\$	
FY2005	1	34	2,224	50	2,759	142	2,121	41	1,754	57	1,979	60	2,222	32	2,421	46	2,727	26	2,092	104	1,527	2,110
FY2005	2	41	2,273	45	2,483	139	2,185	41	2,168	55	1,862	62	2,260	31	2,419	49	2,686	26	1,991	104	1,758	2,160
FY2005	3	36	2,330	41	2,585	122	2,298	40	1,960	55	1,722	56	2,315	27	2,178	42	3,134	21	2,084	98	1,615	2,166
FY2005	4	38	2,641	46	2,682	127	2,029	42	2,095	44	2,363	61	2,388	24	2,735	44	2,684	24	2,032	79	1,712	2,244
FY2006	1	39	2,938	47	2,648	135	2,097	37	2,132	45	1,756	58	2,505	28	2,960	46	2,454	26	2,050	97	1,709	2,223
FY2006	2	39	2,483	46	2,632	142	2,193	41	2,301	50	2,024	74	2,233	32	2,653	48	2,697	25	2,526	104	1,746	2,245
FY2006	3	37	2,637	40	2,684	139	2,081	41	2,119	49	1,788	73	2,262	27	2,954	43	2,850	23	2,369	95	1,840	2,232
FY2006	4	34	2,590	38	2,898	130	2,052	35	2,008	45	2,129	73	2,104	27	3,973	46	2,597	28	2,113	95	1,768	2,248
FY2007	1	39	2,508	37	3,142	136	2,255	37	2,210	46	1,996	60	2,249	26	3,773	46	3,587	28	2,352	102	1,781	2,405
FY2007	2	39	2,484	43	3,218	144	2,219	35	2,294	48	1,730	68	2,052	26	3,701	47	3,361	30	2,007	96	1,822	2,338
FY2007	3	35	2,764	38	2,853	123	2,279	30	2,440	39	1,985	57	2,539	31	2,642	43	2,619	27	2,187	90	1,785	2,329
FY2007	4	41	2,862	39	2,848	126	2,371	35	2,248	45	1,687	55	2,361	23	3,714	46	2,797	27	2,109	96	1,734	2,343
FY2008	1	44	2,846	43	2,836	120	2,426	36	2,483	53	1,652	56	2,501	26	3,295	50	2,574	27	1,765	97	1,830	2,346
FY2008	2	47	2,768	40	3,016	132	2,401	33	2,680	55	1,609	52	2,445	26	3,929	47	3,402	24	2,812	100	1,785	2,482
FY2008	3	41	2,564	31	2,833	116	2,538	31	2,810	52	1,665	44	2,053	23	3,580	45	3,218	22	2,028	99	1,871	2,397
FY2008	4	43	2,644	31	2,795	109	2,628	30	2,809	46	1,475	44	2,179	20	3,742	47	3,018	20	1,563	102	1,962	2,404
FY2009	1	43	2,832	28	2,946	126	2,430	32	1,676	48	1,549	47	2,261	18	3,480	49	2,763	22	1,467	96	1,944	2,282
FY2009	2	37	2,974	28	3,144	125	2,691	33	1,656	48	1,809	52	2,055	17	3,158	44	3,356	19	1,871	93	1,897	2,411
FY2009	3	37	2,437	24	2,454	112	3,016	29	1,749	38	1,817	40	2,236	13	3,509	44	2,709	21	1,517	87	1,759	2,350
FY2009	4	27	2,657	17	3,038	110	2,251	33	1,548	33	1,861	35	2,477	16	2,545	44	2,855	18	1,934	84	1,748	2,202
FY2010	1	31	3,064	21	3,173	105	2,255	30	2,132	31	1,708	37	2,213	12	2,823	43	2,873	19	2,170	90	1,842	2,295
FY2010	2	30	3,073	21	2,827	111	2,561	30	2,164	29	1,796	37	1,990	15	3,023	40	3,465	15	2,375	87	1,930	2,443
FY2010	3	29	2,483	18	2,890	95	2,217	25	2,032	25	1,593	31	2,020	16	2,814	47	3,028	11	2,244	76	1,741	2,209
FY2010	4	33	2,049	18	2,538	99	2,740	26	2,327	28	1,495	31	2,085	15	2,194	38	3,399	12	1,758	83	1,747	2,297
FY2011	1	33	2,616	18	2,146	94	2,309	29	2,223	28	1,853	32	2,401	14	2,983	41	2,811	10	2,264	78	1,870	2,283
FY2011	2	29	2,968	15	2,899	101	2,195	27	1,982	32	1,475	33	2,370	14	2,894	37	3,638	11	1,914	77	1,885	2,318
FY2011	3	27	2,642	13	2,937	86	2,481	22	2,259	29	1,501	30	2,620	12	2,154	33	3,455	10	1,822	70	1,812	2,348
FY2011	4	24	2,611	15	2,491	86	2,299	23	2,334	29	1,782	30	2,647	12	2,279	34	3,668	11	2,020	81	1,765	2,318
FY2012	1	26	2,537	16	2,687	102	2,071	21	2,600	28	1,874	30	2,337	15	1,819	37	3,297	13	2,182	76	1,923	2,256
FY2012	2	29	2,589	17	2,730	106	2,269	25	2,538	26	1,587	28	1,731	15	2,114	35	3,458	11	2,831	68	2,106	2,340
FY2012	3	26	2,392	15	2,487	94	2,449	21	2,392	35	1,577	25	2,295	16	2,051	36	3,353	10	2,731	71	1,863	2,308
FY2012	4	27	2,377	28	1,598	97	2,657	22	2,110	29	1,797	23	2,142	14	2,317	34	3,842	9	2,764	75	1,913	2,363
FY2013	1	24	2,504	26	1,958	100	2,599	22	2,040	39	2,135	24	2,182	15	2,010	36	3,200	11	2,604	69	2,104	2,379
FY2013	2	21	2,130	23	2,178	103	2,416	19	2,348	43	3,386	23	2,230	15	1,012	34	3,552	14	2,173	73	2,236	2,486
FY2013	3	20	2,106	20	1,928	105	2,285	14	2,558	39	2,000	25	2,133	11	1,428	33	3,973	13	2,100	73	2,142	2,318
FY2013	4	21	2,499	19	2,273	102	2,688	15	2,327	46	2,059	23	2,235	14	1,372	33	3,842	13	1,980	78	2,200	2,457
FY2014	1	22	2,378	23	2,779	116	2,478	17	2,373	46	2,287	27	1,692	15	1,963	34	3,027	15	1,977	83	1,924	2,303
FY2014	2	21	2,301	19	2,368	100	2,640	11	2,956	41	2,048	22	1,987	13	1,948	32	3,661	15	1,859	71	2,244	2,456
FY2014	3	25	1,609	21	2,627	99	2,416	14	2,848	43	2,210	28	1,954	14	2,630	34	3,215	16	1,620	75	2,036	2,301
FY2014	4	26	1,984	23	2,518	106	2,722	19	2,251	44	2,025	32	1,866	16	1,694	36	3,344	17	2,808	82	2,044	2,375

Analysis includes Community Rehabilitation and Treatment (CRT) clients aged 18- 64 who were active during each reporting quarter and includes all employment reported for each quarter. Quarterly employment rates are lower than annual employment rates because not all clients who are employed during a year are employed during every quarter of the year.

This report is based on analysis of the VT Department of Mental Health (DMH) and Department of Labor (DOL) databases. DMH client data are submitted by designated agencies in conformance with contractual requirements. DOL data are submitted by employers in conformance with state and federal laws. Workers who are excluded from DOL reporting are the self-employed, firm owners not incorporated and the following employee groups: elected officials, employees of nonprofit religious, charitable and educational organizations, unpaid family members, farm workers (with some exceptions), railroad employees, and individuals who work out of state.