

Vermont Mental Health Performance Indicator Project

Agency of Human Services, Department of Mental Health
26 Terrace Street, Montpelier, VT 05609

TO: Vermont Mental Health Performance Indicator Project
Advisory Group and Interested Parties

FROM: Sheila Leno

DATE: April 17, 2015

RE: Employment of CRT Clients: First Quarter of Fiscal Years 2006-2015

This week's PIP provides the employment rates of adults with severe and persistent mental illness served by Vermont's Community Rehabilitation and Treatment (CRT) programs for the first quarter of FY2015 (July through September, 2014) and for the first quarter of the previous nine fiscal years. Previous reports regarding employment rates are available online at: <http://mentalhealth.vermont.gov/report/pip/sector#employment>.

Consistent with previous employment reports, this report is based on analysis of data obtained from the Vermont Department of Mental Health (DMH) designated agencies and data obtained from the Vermont Department of Labor (DOL). More methodological details are provided in the attached tables.

As you will see, CRT first-quarter client employment rates remained in the 20% to 21% range during FY2006 - FY2009, before decreasing to 16.3% in FY2010 and around 15% during FY2011 - FY2013. In FY2014 and FY2015, the employment rate has increased slightly to 17.4%. (Page 2)

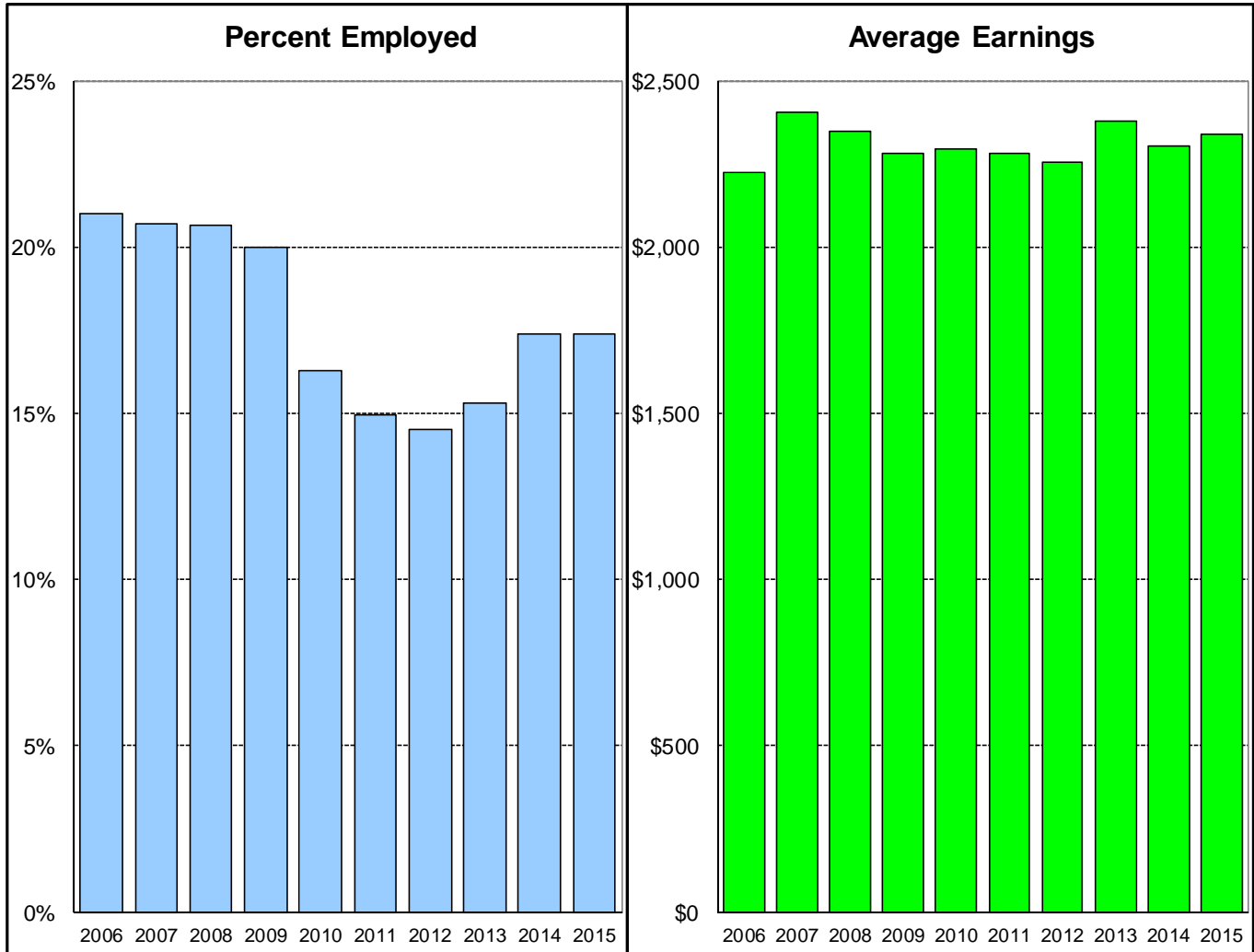
First quarter employment rates for CRT clients increased in seven of Vermont's ten community mental health regions between fiscal years 2014 and 2015. This increase was greatest at Northwestern Counseling and Support Services (NCSS) which experienced a 22% increase in CRT employment (from 11.7% to 14.3%), followed by Lamoille County Mental Health (LCMH) which experienced a 13% increase (from 17.3% to 19.6%). First quarter employment rates for CRT clients at Health Care & Rehabilitation Services of Southeastern Vermont (HCRS) decreased 14% between FY2014 and FY2015, from 13.8% to 11.9%. (Page 4)

During the ten years under examination, statewide average first-quarter earnings of employed CRT clients were at a high of \$2,405 in FY2007, decreasing through FY2012 to a low of \$2,256 before increased to \$2,379 in FY2013. FY2014 and FY2015 were just slightly lower with average earnings of \$2,303 and \$2,339 respectively. (Page 2)

As always, we look forward to your comments and suggestions for further analyses of these data by e-mail at pip@state.vt.us.

Statewide CRT Employment Rates and Average Earnings

First Quarter of Each Fiscal Year 2006 - 2015

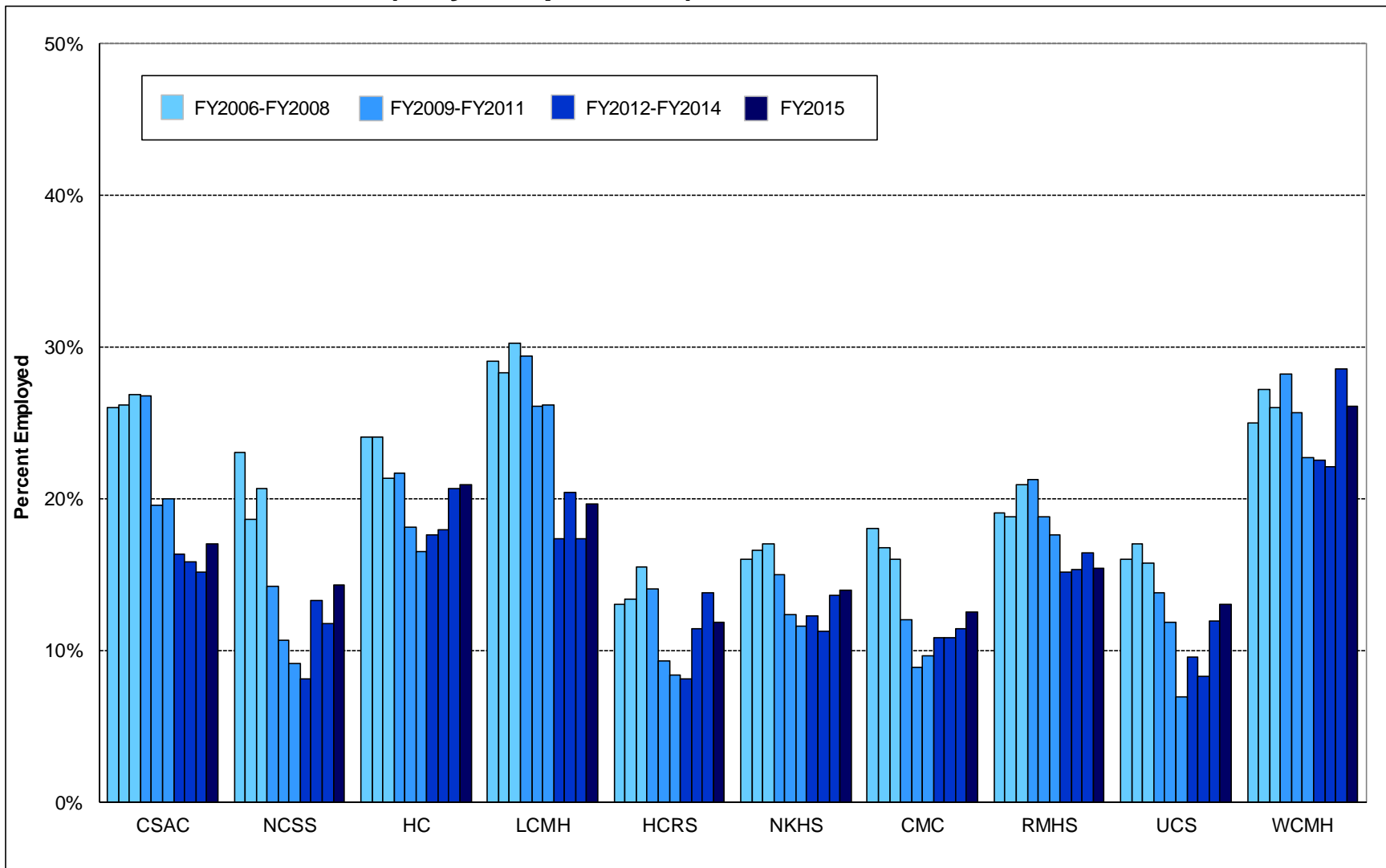


	First Quarter (July - September) of Fiscal Year									
	<u>2006</u>	<u>2007</u>	<u>2008</u>	<u>2009</u>	<u>2010</u>	<u>2011</u>	<u>2012</u>	<u>2013</u>	<u>2014</u>	<u>2015</u>
% Employed	21.0	20.7	20.7	20.0	16.3	14.9	14.5	15.3	17.4	17.4
\$ / Employed Client	2,223	2,405	2,346	2,282	2,295	2,283	2,256	2,379	2,303	2,339

This report is based on record linkage of the Vermont Department of Mental Health (DMH) and Department of Labor (DOL) databases. DMH client data are submitted by Community Programs in conformance with contractual requirements. DOL data are submitted by employers in conformance with state and federal laws. Workers who are excluded from DOL reporting are the self-employed, firm owners not incorporated and the following employee groups: elected officials, employees of nonprofit religious, charitable and educational organizations, unpaid family members, farm workers (with some exceptions), railroad employees, and individuals employed in neighboring states. Analysis includes Community Rehabilitation and Treatment (CRT) clients aged 18 - 64 who were active during each reporting quarter and includes all employment reported for each quarter. Quarterly employment rates are lower than annual employment rates because not all clients who are employed during a year are employed during every quarter of the year.

CRT Clients Employed

First Quarter (July - September) of Each Fiscal Year 2006 - 2015



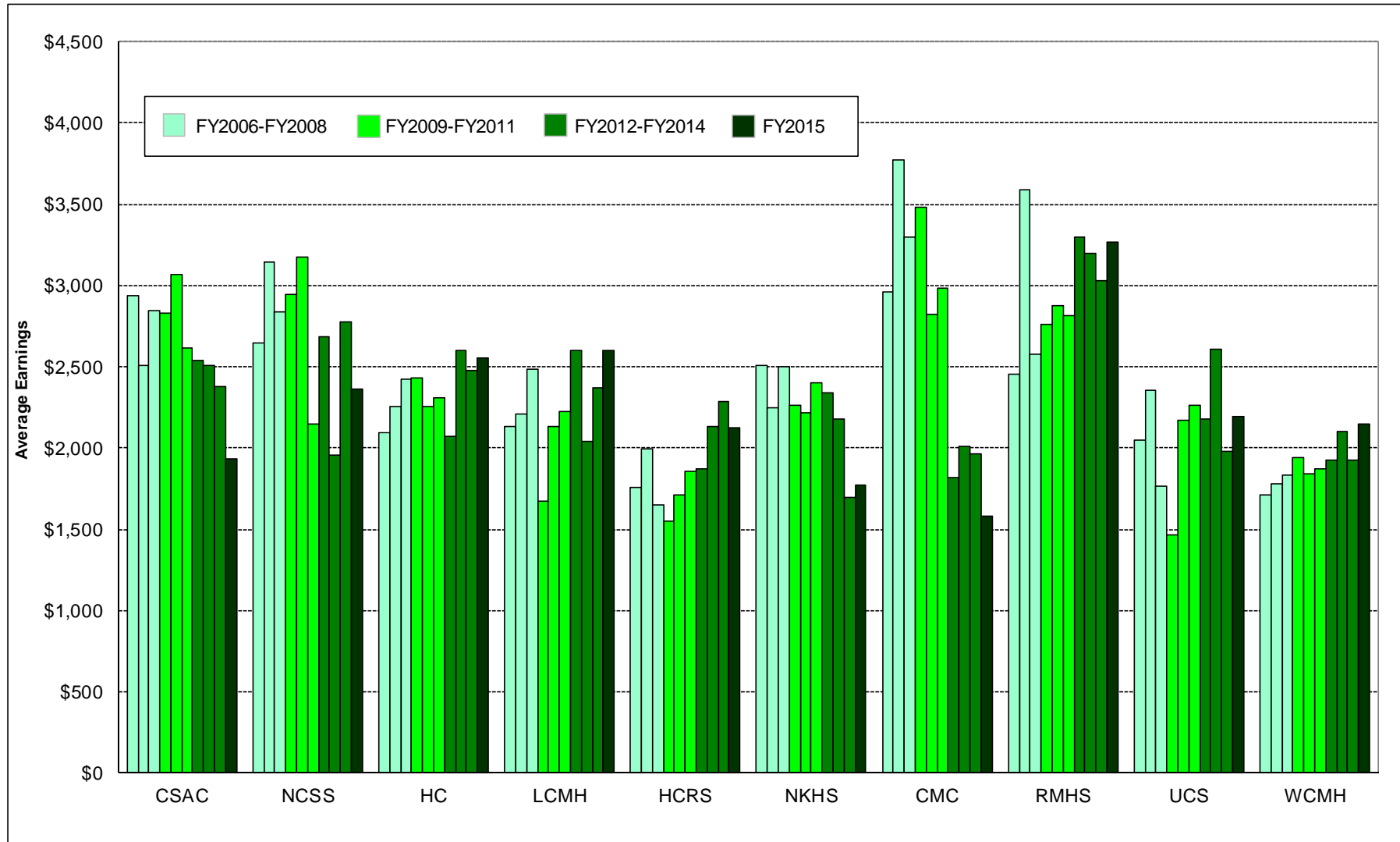
This report is based on record linkage of the Vermont Department of Mental Health (DMH) and Department of Labor (DOL) databases. DMH client data are submitted by Community Programs in conformance with contractual requirements. DOL data are submitted by employers in conformance with state and federal laws. Workers who are excluded from DOL reporting are the self-employed, firm owners not incorporated and the following employee groups: elected officials, employees of nonprofit religious, charitable and educational organizations, unpaid family members, farm workers (with some exceptions), railroad employees, and individuals employed in neighboring states. Analysis includes Community Rehabilitation and Treatment (CRT) clients aged 18 - 64 who were active during each reporting quarter and includes all employment reported for each quarter. Quarterly employment rates are lower than annual employment rates because not all clients who are employed during a year are employed during every quarter of the year.

Total CRT Clients Served (#) and Percent Employed (%) First Quarter (July - September) of Each Fiscal Year 2006 - 2015

Year	Clinic																		Statewide			
	CSAC		NCSS		HC		LCMH		HCRS		NKHS		CMC		RMHS		UCS				WCMH	
	#	%	#	%	#	%	#	%	#	%	#	%	#	%	#	%	#	%	#	%	#	%
FY15	141	17.0	189	14.3	546	20.9	107	19.6	312	11.9	186	14.0	120	12.5	208	15.4	131	13.0	272	26.1	2,212	17.4
FY14	145	15.2	196	11.7	562	20.6	98	17.3	334	13.8	199	13.6	132	11.4	207	16.4	126	11.9	291	28.5	2,290	17.4
FY13	152	15.8	196	13.3	559	17.9	108	20.4	343	11.4	213	11.3	139	10.8	235	15.3	133	8.3	312	22.1	2,390	15.3
FY12	159	16.4	198	8.1	579	17.6	121	17.4	345	8.1	245	12.2	139	10.8	245	15.1	136	9.6	338	22.5	2,505	14.5
FY11	165	20.0	197	9.1	569	16.5	111	26.1	337	8.3	277	11.6	145	9.7	233	17.6	145	6.9	344	22.7	2,523	14.9
FY10	159	19.5	197	10.7	581	18.1	115	26.1	335	9.3	301	12.3	136	8.8	229	18.8	161	11.8	351	25.6	2,565	16.3
FY09	161	26.7	197	14.2	581	21.7	109	29.4	343	14.0	315	14.9	150	12.0	231	21.2	160	13.8	341	28.2	2,588	19.7
FY08	164	26.8	208	20.7	562	21.4	119	30.3	342	15.5	329	17.0	163	16.0	239	20.9	172	15.7	373	26.0	2,671	20.7
FY07	149	26.2	199	18.6	566	24.0	131	28.2	345	13.3	362	16.6	155	16.8	245	18.8	165	17.0	376	27.1	2,693	20.7
FY06	149	26.0	203	23.0	558	24.0	129	29.0	345	13.0	366	16.0	154	18.0	243	19.0	161	16.0	386	25.0	2,694	21.0

This report is based on record linkage of the Vermont Department of Mental Health (DMH) and Department of Labor (DOL) databases. DMH client data are submitted by Community Programs in conformance with contractual requirements. DOL data are submitted by employers in conformance with state and federal laws. Workers who are excluded from DOL reporting are the self-employed, firm owners not incorporated and the following employee groups: elected officials, employees of nonprofit religious, charitable and educational organizations, unpaid family members, farm workers (with some exceptions), railroad employees, and individuals employed in neighboring states. Analysis includes Community Rehabilitation and Treatment (CRT) clients aged 18 - 64 who were active during each reporting quarter and includes all employment reported for each quarter. Quarterly employment rates are lower than annual employment rates because not all clients who are employed during a year are employed during every quarter of the year.

Average Earnings for Employed CRT Clients First Quarter (July - September) of Each Fiscal Year 2006 - 2015



This report is based on record linkage of the Vermont Department of Mental Health (DMH) and Department of Labor (DOL) databases. DMH client data are submitted by Community Programs in conformance with contractual requirements. DOL data are submitted by employers in conformance with state and federal laws. Workers who are excluded from DOL reporting are the self-employed, firm owners not incorporated and the following employee groups: elected officials, employees of nonprofit religious, charitable and educational organizations, unpaid family members, farm workers (with some exceptions), railroad employees, and individuals employed in neighboring states. Analysis includes Community Rehabilitation and Treatment (CRT) clients aged 18 - 64 who were active during each reporting quarter and includes all employment reported for each quarter. Quarterly employment rates are lower than annual employment rates because not all clients who are employed during a year are employed during every quarter of the year.

CRT Clients Employed (#) and Average Earnings for Employed Clients (\$) First Quarter (July - September) of Each Fiscal Year 2006 - 2015

Year	Clinic																Statewide \$				
	CSAC		NCSS		HC		LCMH		HCRS		NKHS		CMC		RMHS			UCS		WCMH	
	#	\$	#	\$	#	\$	#	\$	#	\$	#	\$	#	\$	#	\$	#	\$	#	\$	
FY15	24	1,933	27	2,364	114	2,551	21	2,601	37	2,127	26	1,770	15	1,581	32	3,264	17	2,190	71	2,148	2,339
FY14	22	2,378	23	2,779	116	2,478	17	2,373	46	2,287	27	1,692	15	1,963	34	3,027	15	1,977	83	1,924	2,303
FY13	24	2,504	26	1,958	100	2,599	22	2,040	39	2,135	24	2,182	15	2,010	36	3,200	11	2,604	69	2,104	2,379
FY12	26	2,537	16	2,687	102	2,071	21	2,600	28	1,874	30	2,337	15	1,819	37	3,297	13	2,182	76	1,923	2,256
FY11	33	2,616	18	2,146	94	2,309	29	2,223	28	1,853	32	2,401	14	2,983	41	2,811	10	2,264	78	1,870	2,283
FY10	31	3,064	21	3,173	105	2,255	30	2,132	31	1,708	37	2,213	12	2,823	43	2,873	19	2,170	90	1,842	2,295
FY09	43	2,832	28	2,946	126	2,430	32	1,676	48	1,549	47	2,261	18	3,480	49	2,763	22	1,467	96	1,944	2,282
FY08	44	2,846	43	2,836	120	2,426	36	2,483	53	1,652	56	2,501	26	3,295	50	2,574	27	1,765	97	1,830	2,346
FY07	39	2,508	37	3,142	136	2,255	37	2,210	46	1,996	60	2,249	26	3,773	46	3,587	28	2,352	102	1,781	2,405
FY06	39	2,938	47	2,648	135	2,097	37	2,132	45	1,756	58	2,505	28	2,960	46	2,454	26	2,050	97	1,709	2,223

This report is based on record linkage of the Vermont Department of Mental Health (DMH) and Department of Labor (DOL) databases. DMH client data are submitted by Community Programs in conformance with contractual requirements. DOL data are submitted by employers in conformance with state and federal laws. Workers who are excluded from DOL reporting are the self-employed, firm owners not incorporated and the following employee groups: elected officials, employees of nonprofit religious, charitable and educational organizations, unpaid family members, farm workers (with some exceptions), railroad employees, and individuals employed in neighboring states. Analysis includes Community Rehabilitation and Treatment (CRT) clients aged 18 - 64 who were active during each reporting quarter and includes all employment reported for each quarter. Quarterly employment rates are lower than annual employment rates because not all clients who are employed during a year are employed during every quarter of the year.

FY2015 First Quarter (July - September) Employment of Community Rehabilitation and Treatment Clients In Vermont

Clinic	Total Number Served	Employment		Wages Reported	
		Number Employed	Percent Employed	Total Wages	Wages per Employed Client
CSAC	141	24	17.0%	\$46,383	\$1,933
NCSS	189	27	14.3%	\$63,833	\$2,364
HC	546	114	20.9%	\$290,849	\$2,551
LCMH	107	21	19.6%	\$54,612	\$2,601
HCRS	312	37	11.9%	\$78,685	\$2,127
NKHS	186	26	14.0%	\$46,032	\$1,770
CMC	120	15	12.5%	\$23,719	\$1,581
RMHS	208	32	15.4%	\$104,441	\$3,264
UCS	131	17	13.0%	\$37,236	\$2,190
WCMH	272	71	26.1%	\$152,489	\$2,148
Quarterly Total	2,212	384	17.4%	\$898,279	\$2,339

This report is based on record linkage of the Vermont Department of Mental Health (DMH) and Department of Labor (DOL) databases. DMH client data are submitted by Community Programs in conformance with contractual requirements. DOL data are submitted by employers in conformance with state and federal laws. Workers who are excluded from DOL reporting are the self-employed, firm owners not incorporated and the following employee groups: elected officials, employees of nonprofit religious, charitable and educational organizations, unpaid family members, farm workers (with some exceptions), railroad employees, and individuals employed in neighboring states. Analysis includes Community Rehabilitation and Treatment (CRT) clients aged 18 - 64 who were active during each reporting quarter and includes all employment reported for each quarter. Quarterly employment rates are lower than annual employment rates because not all clients who are employed during a year are employed during every quarter of the year.