

Vermont Mental Health Performance Indicator Project

Agency of Human Services, Department of Mental Health
26 Terrace Street, Montpelier, VT 05609

TO: Vermont Mental Health Performance Indicator Project
Advisory Group and Interested Parties

FROM: Emma Harrigan and Sheila Leno

DATE: April 11, 2014

RE: Employment of CRT Clients: First Quarter of Fiscal Years 2005-2014

This week's PIP provides the employment rates of adults with severe and persistent mental illness served by Vermont's Community Rehabilitation and Treatment (CRT) programs for the first quarter of FY2014 (July through September, 2013) and for the first quarter of the previous nine fiscal years. Previous reports regarding employment rates are available online at: <http://mentalhealth.vermont.gov/report/pip/sector#employment>.

Consistent with previous employment reports, this report is based on analysis of data obtained from the Vermont Department of Mental Health (DMH) designated agencies and data obtained from the Vermont Department of Labor (DOL). More methodological details are provided in the attached tables.

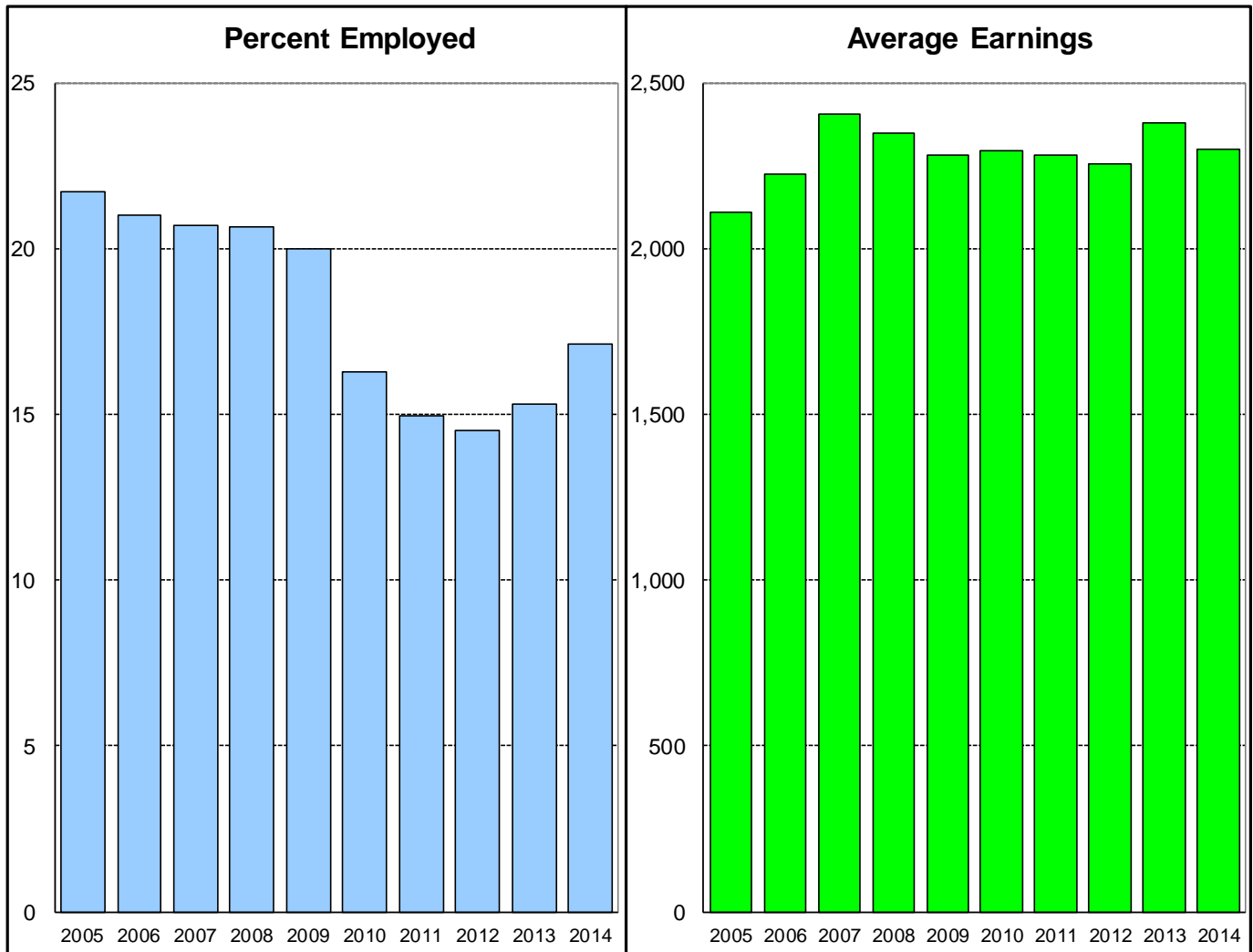
As you will see, CRT first-quarter client employment rates remained in the 20% to 22% range during FY2005 - FY2009, before decreasing to 16% in FY2010 and 15% during FY2011 - FY2013. In FY2014, the employment rate increased to 17%. (Page 2)

First quarter employment rates for CRT clients increased in seven of Vermont's ten community mental health regions between fiscal years 2013 and 2014. This increase was greatest at United Counseling Services (UCS) which experienced a 44% increase in CRT employment (from 8% to 12%), followed by Washington County Mental Health Services (WCMH) which experienced a 25% increase (from 22% to 28%). First quarter employment rates for CRT clients at Lamoille County Mental Health (LCMH) decreased 16% between FY2013 and FY2014, from 20% to 17%. (Page 4)

During the ten years under examination, statewide average first-quarter earnings of employed CRT clients increased from a low of \$2,110 in FY2005 to a high of \$2,405 in FY2007 before decreasing, fairly consistently, to \$2,256 in FY2012. FY2013 saw average earnings increase to \$2,379. In FY2014, there was a decrease to \$2,298. (Page 2)

As always, we look forward to your comments and suggestions for further analyses of these data by e-mail at pip@state.vt.us.

Statewide CRT Employment Rates and Average Earnings First Quarter of Each Fiscal Year 2005 - 2014

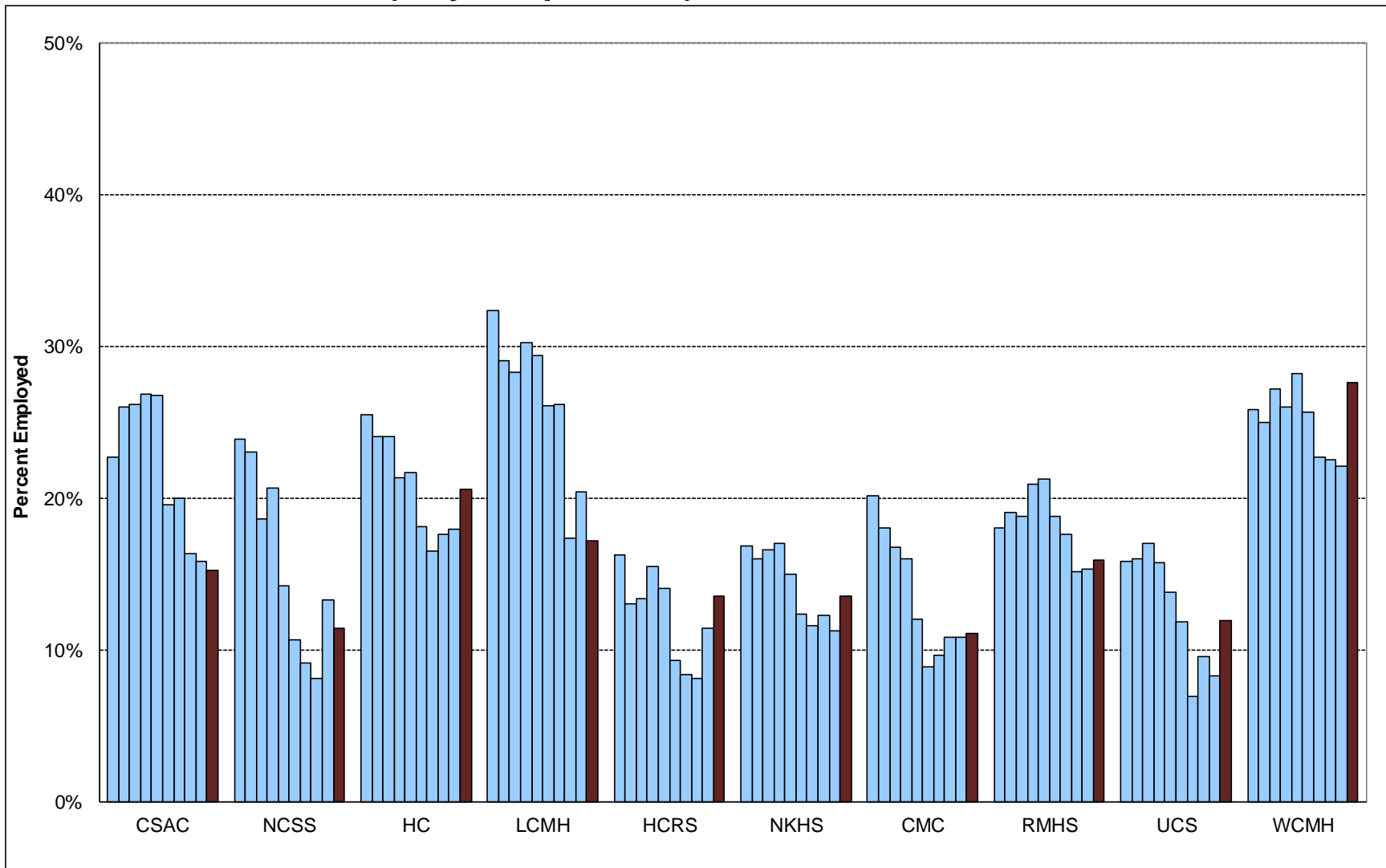


	First Quarter (July - September) of Fiscal Year									
	<u>2005</u>	<u>2006</u>	<u>2007</u>	<u>2008</u>	<u>2009</u>	<u>2010</u>	<u>2011</u>	<u>2012</u>	<u>2013</u>	<u>2014</u>
% Employed	22	21	21	21	20	16	15	15	15	17
\$ / Employed Client	2,110	2,223	2,405	2,346	2,282	2,295	2,283	2,256	2,379	2,298

This report is based on record linkage of the Vermont Department of Mental Health (DMH) and Department of Labor (DOL) databases. DMH client data are submitted by Community Programs in conformance with contractual requirements. DOL data are submitted by employers in conformance with state and federal laws. Workers who are excluded from DOL reporting are the self-employed, firm owners not incorporated and the following employee groups: elected officials, employees of nonprofit religious, charitable and educational organizations, unpaid family members, farm workers (with some exceptions), railroad employees, and individuals employed in neighboring states. Analysis includes Community Rehabilitation and Treatment (CRT) clients aged 18 - 64 who were active during each reporting quarter and includes all employment reported for each quarter. Quarterly employment rates are lower than annual employment rates because not all clients who are employed during a year are employed during every quarter of the year.

CRT Clients Employed

First Quarter (July - September) of Each Fiscal Year 2005 - 2014



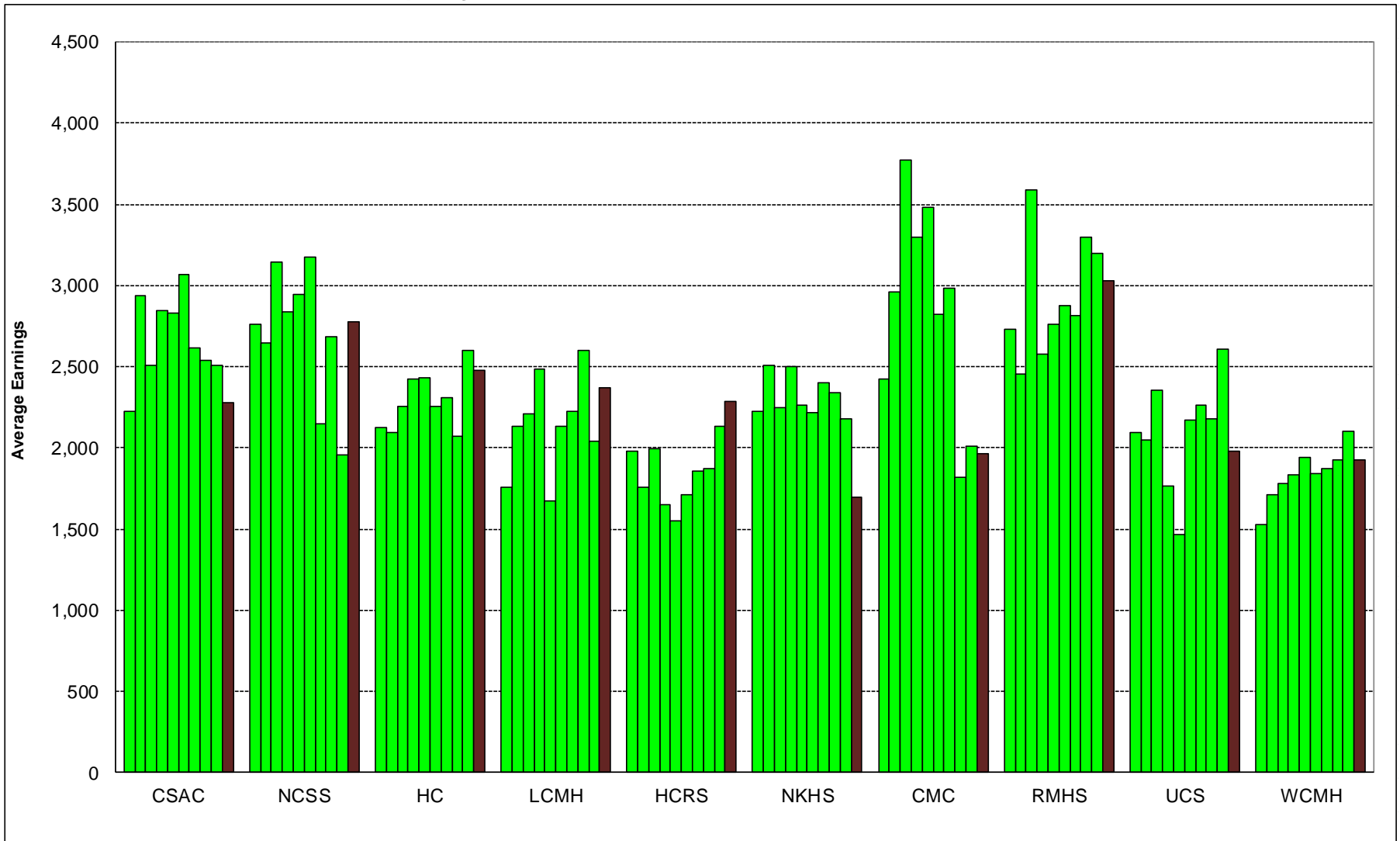
This report is based on record linkage of the Vermont Department of Mental Health (DMH) and Department of Labor (DOL) databases. DMH client data are submitted by Community Programs in conformance with contractual requirements. DOL data are submitted by employers in conformance with state and federal laws. Workers who are excluded from DOL reporting are the self-employed, firm owners not incorporated and the following employee groups: elected officials, employees of nonprofit religious, charitable and educational organizations, unpaid family members, farm workers (with some exceptions), railroad employees, and individuals employed in neighboring states. Analysis includes Community Rehabilitation and Treatment (CRT) clients aged 18 - 64 who were active during each reporting quarter and includes all employment reported for each quarter. Quarterly employment rates are lower than annual employment rates because not all clients who are employed during a year are employed during every quarter of the year.

**Total CRT Clients Served (#) and Percent Employed (%)
First Quarter (July - September) of Each Fiscal Year 2005 - 2014**

Year	Clinic														Total %						
	CSAC		NCSS		HC		LCMH		HCRS		NKHS		CMC			RMHS		UCS		WCMH	
	#	%	#	%	#	%	#	%	#	%	#	%	#	%	#	%	#	%	#	%	
FY14	151	15	202	11	564	21	99	17	341	13	200	14	136	11	214	16	126	12	301	28	17
FY13	152	16	196	13	559	18	108	20	343	11	213	11	139	11	235	15	133	8	312	22	15
FY12	159	16	198	8	579	18	121	17	345	8	245	12	139	11	245	15	136	10	338	22	15
FY11	165	20	197	9	569	17	111	26	337	8	277	12	145	10	233	18	145	7	344	23	15
FY10	159	19	197	11	581	18	115	26	335	9	301	12	136	9	229	19	161	12	351	26	16
FY09	161	27	197	14	581	22	109	29	343	14	315	15	150	12	231	21	160	14	341	28	20
FY08	164	27	208	21	562	21	119	30	342	15	329	17	163	16	239	21	172	16	373	26	21
FY07	149	26	199	19	566	24	131	28	345	13	362	17	155	17	245	19	165	17	376	27	21
FY06	149	26	203	23	558	24	129	29	345	13	366	16	154	18	243	19	161	16	386	25	21
FY05	150	23	209	24	556	26	127	32	351	16	357	17	159	20	256	18	165	16	403	26	22

This report is based on record linkage of the Vermont Department of Mental Health (DMH) and Department of Labor (DOL) databases. DMH client data are submitted by Community Programs in conformance with contractual requirements. DOL data are submitted by employers in conformance with state and federal laws. Workers who are excluded from DOL reporting are the self-employed, firm owners not incorporated and the following employee groups: elected officials, employees of nonprofit religious, charitable and educational organizations, unpaid family members, farm workers (with some exceptions), railroad employees, and individuals employed in neighboring states. Analysis includes Community Rehabilitation and Treatment (CRT) clients aged 18 - 64 who were active during each reporting quarter and includes all employment reported for each quarter. Quarterly employment rates are lower than annual employment rates because not all clients who are employed during a year are employed during every quarter of the year.

Average Earnings for Employed CRT Clients First Quarter (July - September) of Each Fiscal Year 2005 - 2014



This report is based on record linkage of the Vermont Department of Mental Health (DMH) and Department of Labor (DOL) databases. DMH client data are submitted by Community Programs in conformance with contractual requirements. DOL data are submitted by employers in conformance with state and federal laws. Workers who are excluded from DOL reporting are the self-employed, firm owners not incorporated and the following employee groups: elected officials, employees of nonprofit religious, charitable and educational organizations, unpaid family members, farm workers (with some exceptions), railroad employees, and individuals employed in neighboring states. Analysis includes Community Rehabilitation and Treatment (CRT) clients aged 18 - 64 who were active during each reporting quarter and includes all employment reported for each quarter. Quarterly employment rates are lower than annual employment rates because not all clients who are employed during a year are employed during every quarter of the year.

CRT Clients Employed (#) and Average Earnings for Employed Clients (\$) First Quarter (July - September) of Each Fiscal Year 2005 - 2014

Year	Clinic																Total \$				
	CSAC		NCSS		HC		LCMH		HCRS		NKHS		CMC		RMHS			UCS		WCMH	
	#	\$	#	\$	#	\$	#	\$	#	\$	#	\$	#	\$	#	\$	#	\$	#	\$	
FY14	23	2,281	23	2,779	116	2,478	17	2,373	46	2,287	27	1,692	15	1,963	34	3,027	15	1,977	83	1,924	2,298
FY13	24	2,504	26	1,958	100	2,599	22	2,040	39	2,135	24	2,182	15	2,010	36	3,200	11	2,604	69	2,104	2,379
FY12	26	2,537	16	2,687	102	2,071	21	2,600	28	1,874	30	2,337	15	1,819	37	3,297	13	2,182	76	1,923	2,256
FY11	33	2,616	18	2,146	94	2,309	29	2,223	28	1,853	32	2,401	14	2,983	41	2,811	10	2,264	78	1,870	2,283
FY10	31	3,064	21	3,173	105	2,255	30	2,132	31	1,708	37	2,213	12	2,823	43	2,873	19	2,170	90	1,842	2,295
FY09	43	2,832	28	2,946	126	2,430	32	1,676	48	1,549	47	2,261	18	3,480	49	2,763	22	1,467	96	1,944	2,282
FY08	44	2,846	43	2,836	120	2,426	36	2,483	53	1,652	56	2,501	26	3,295	50	2,574	27	1,765	97	1,830	2,346
FY07	39	2,508	37	3,142	136	2,255	37	2,210	46	1,996	60	2,249	26	3,773	46	3,587	28	2,352	102	1,781	2,405
FY06	39	2,938	47	2,648	135	2,097	37	2,132	45	1,756	58	2,505	28	2,960	46	2,454	26	2,050	97	1,709	2,223
FY05	34	2,224	50	2,759	142	2,121	41	1,754	57	1,979	60	2,222	32	2,421	46	2,727	26	2,092	104	1,527	2,110

This report is based on record linkage of the Vermont Department of Mental Health (DMH) and Department of Labor (DOL) databases. DMH client data are submitted by Community Programs in conformance with contractual requirements. DOL data are submitted by employers in conformance with state and federal laws. Workers who are excluded from DOL reporting are the self-employed, firm owners not incorporated and the following employee groups: elected officials, employees of nonprofit religious, charitable and educational organizations, unpaid family members, farm workers (with some exceptions), railroad employees, and individuals employed in neighboring states. Analysis includes Community Rehabilitation and Treatment (CRT) clients aged 18 - 64 who were active during each reporting quarter and includes all employment reported for each quarter. Quarterly employment rates are lower than annual employment rates because not all clients who are employed during a year are employed during every quarter of the year.

**FY2014 First Quarter (July - September) Employment
of Community Rehabilitation and Treatment Clients
In Vermont**

Clinic	Total Number Served	Employment		Wages Reported		
		Number Employed	Percent Employed	Total Wages	Wages per Employed Client	Wages per Client Served
CSAC	151	23	15%	\$52,472	\$2,281	\$347
NCSS	202	23	11%	\$63,927	\$2,779	\$316
HC	564	116	21%	\$287,399	\$2,478	\$510
LCMH	99	17	17%	\$40,343	\$2,373	\$408
HCRS	341	46	13%	\$105,195	\$2,287	\$308
NKHS	200	27	14%	\$45,693	\$1,692	\$228
CMC	136	15	11%	\$29,452	\$1,963	\$217
RMHS	214	34	16%	\$102,920	\$3,027	\$481
UCS	126	15	12%	\$29,659	\$1,977	\$235
WCMH	301	83	28%	\$159,671	\$1,924	\$530
Quarterly Total	2,334	399	17%	\$916,730	\$2,298	\$393

This report is based on record linkage of the Vermont Department of Mental Health (DMH) and Department of Labor (DOL) databases. DMH client data are submitted by Community Programs in conformance with contractual requirements. DOL data are submitted by employers in conformance with state and federal laws. Workers who are excluded from DOL reporting are the self-employed, firm owners not incorporated and the following employee groups: elected officials, employees of nonprofit religious, charitable and educational organizations, unpaid family members, farm workers (with some exceptions), railroad employees, and individuals employed in neighboring states. Analysis includes Community Rehabilitation and Treatment (CRT) clients aged 18 - 64 who were active during each reporting quarter and includes all employment reported for each quarter. Quarterly employment rates are lower than annual employment rates because not all clients who are employed during a year are employed during every quarter of the year.